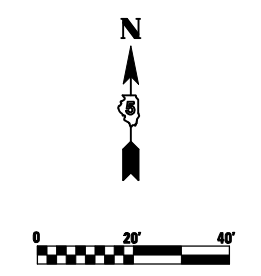


PROP. CURVE TR547-1
 PI STA. = 1+25.17
 $\Delta = 46^\circ 40' 44''$ (LT)
 $D = 45^\circ 50' 12''$
 $R = 125.00'$
 $T = 53.94'$
 $L = 101.84'$
 $E = 11.14'$
 $e = \text{-----}$
 $T.R. = \text{-----}$
 $S.E. \text{ RUN} = \text{-----}$
 $P.C. \text{ STA.} = 0+71.24$
 $P.T. \text{ STA.} = 1+73.08$

70' - 115'
 7' O.S.

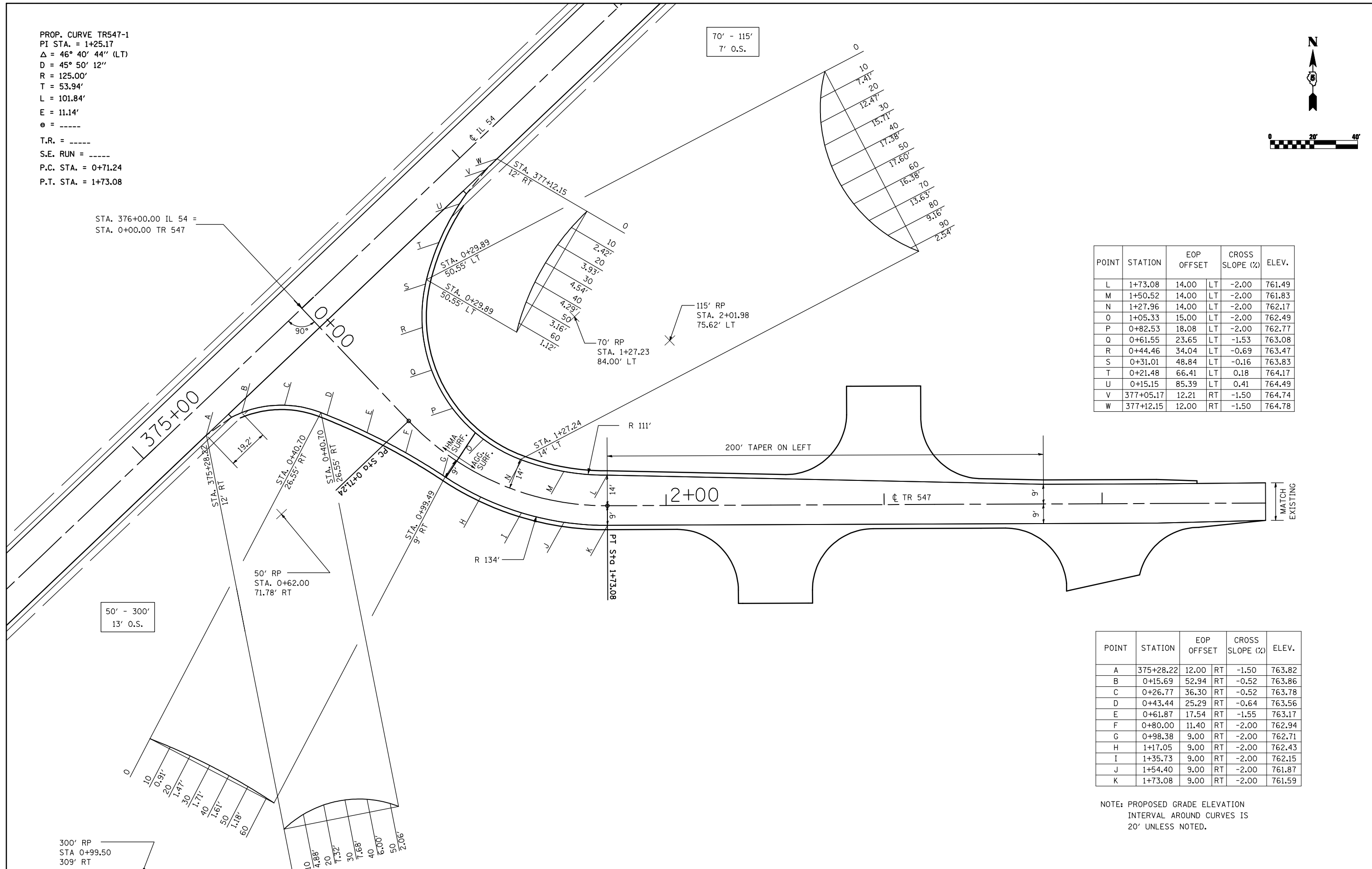


STA. 376+00.00 IL 54 =
 STA. 0+00.00 TR 547

POINT	STATION	EOP OFFSET	CROSS SLOPE (%)	ELEV.
L	1+73.08	14.00	LT -2.00	761.49
M	1+50.52	14.00	LT -2.00	761.83
N	1+27.96	14.00	LT -2.00	762.17
O	1+05.33	15.00	LT -2.00	762.49
P	0+82.53	18.08	LT -2.00	762.77
Q	0+61.55	23.65	LT -1.53	763.08
R	0+44.46	34.04	LT -0.69	763.47
S	0+31.01	48.84	LT -0.16	763.83
T	0+21.48	66.41	LT 0.18	764.17
U	0+15.15	85.39	LT 0.41	764.49
V	377+05.17	12.21	RT -1.50	764.74
W	377+12.15	12.00	RT -1.50	764.78

POINT	STATION	EOP OFFSET	CROSS SLOPE (%)	ELEV.
A	375+28.22	12.00	RT -1.50	763.82
B	0+15.69	52.94	RT -0.52	763.86
C	0+26.77	36.30	RT -0.52	763.78
D	0+43.44	25.29	RT -0.64	763.56
E	0+61.87	17.54	RT -1.55	763.17
F	0+80.00	11.40	RT -2.00	762.94
G	0+98.38	9.00	RT -2.00	762.71
H	1+17.05	9.00	RT -2.00	762.43
I	1+35.73	9.00	RT -2.00	762.15
J	1+54.40	9.00	RT -2.00	761.87
K	1+73.08	9.00	RT -2.00	761.59

NOTE: PROPOSED GRADE ELEVATION
 INTERVAL AROUND CURVES IS
 20' UNLESS NOTED.



50' - 300'
 13' O.S.

300' RP
 STA 0+99.50
 309' RT

FILE NAME =	USER NAME = keysrb	DESIGNED -	REVISED -	STATE OF ILLINOIS DEPARTMENT OF TRANSPORTATION	INTERSECTION DETAIL TR 547				F.A.P. RTE.	SECTION	COUNTY	TOTAL SHEETS	SHEET NO.
ct:\pw\work\pmdot\keysrb\101441\0570592-sht-Intersec.dgn		DRAWN -	REVISED -		71	121R	MCLEAN	87	19				
PLOT SCALE = 40.0000' / IN.		CHECKED -	REVISED -		CONTRACT NO. 70592								
PLOT DATE = 10/16/2009		DATE -	REVISED -		ILLINOIS FED. AID PROJECT								
					SCALE:	SHEET NO.	OF SHEETS	STA.	TO STA.				