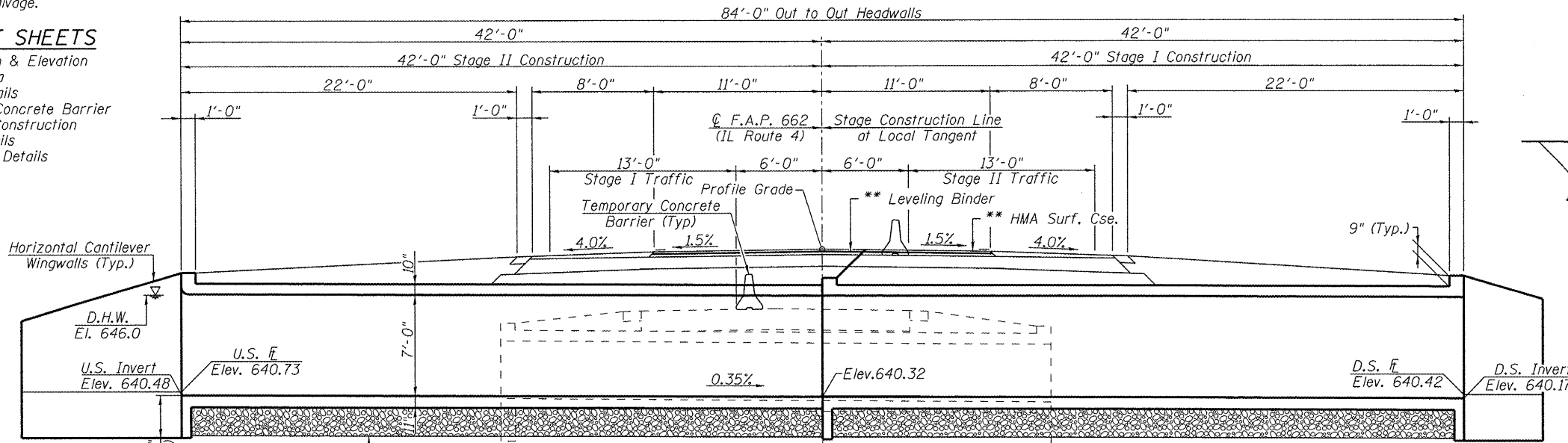


Benchmark: T.J.M. #102: Chisled "□" on north end of west headwall.
 ±21' Rt. Sta. 449+69, El. 645.08
 Existing Structure: S.N. 059-7004 built in 1957 is a single 10' x 4' R.C. box culvert with a culvert length of ±42'-1". Traffic to be maintained utilizing stage construction.

No salvage.

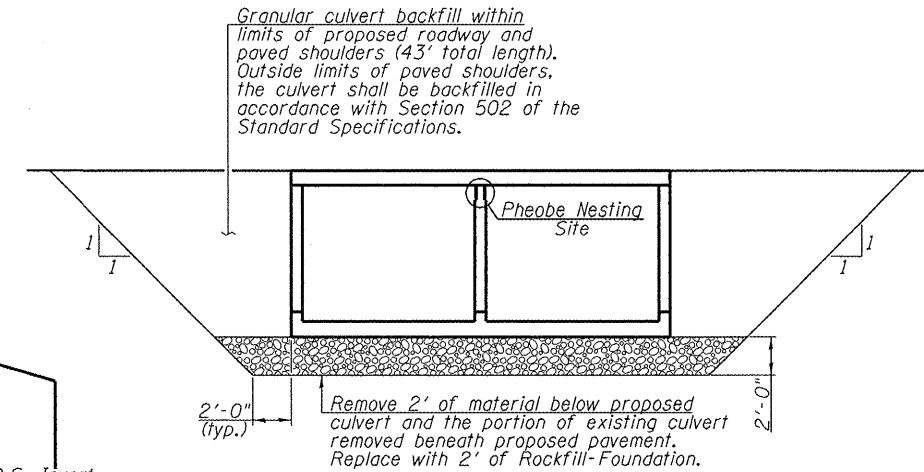
INDEX OF SHEETS

1. General Plan & Elevation
2. General Data
3. Staging Details
4. Temporary Concrete Barrier For Stage Construction
- 5-7. Culvert Details
8. Bar Splicer Details
9. Borings



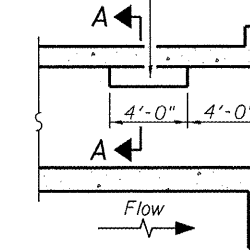
LONGITUDINAL SECTION
 (Looking South)
 (All dimensions at Rt. L's to C.Rdwy. at Local Tangent)

** HMA Surface Course and Leveling Binder to be placed during Stage III Construction under Flaggers. See roadway plans for details.

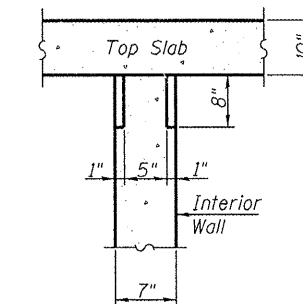


SECTION THRU BARREL

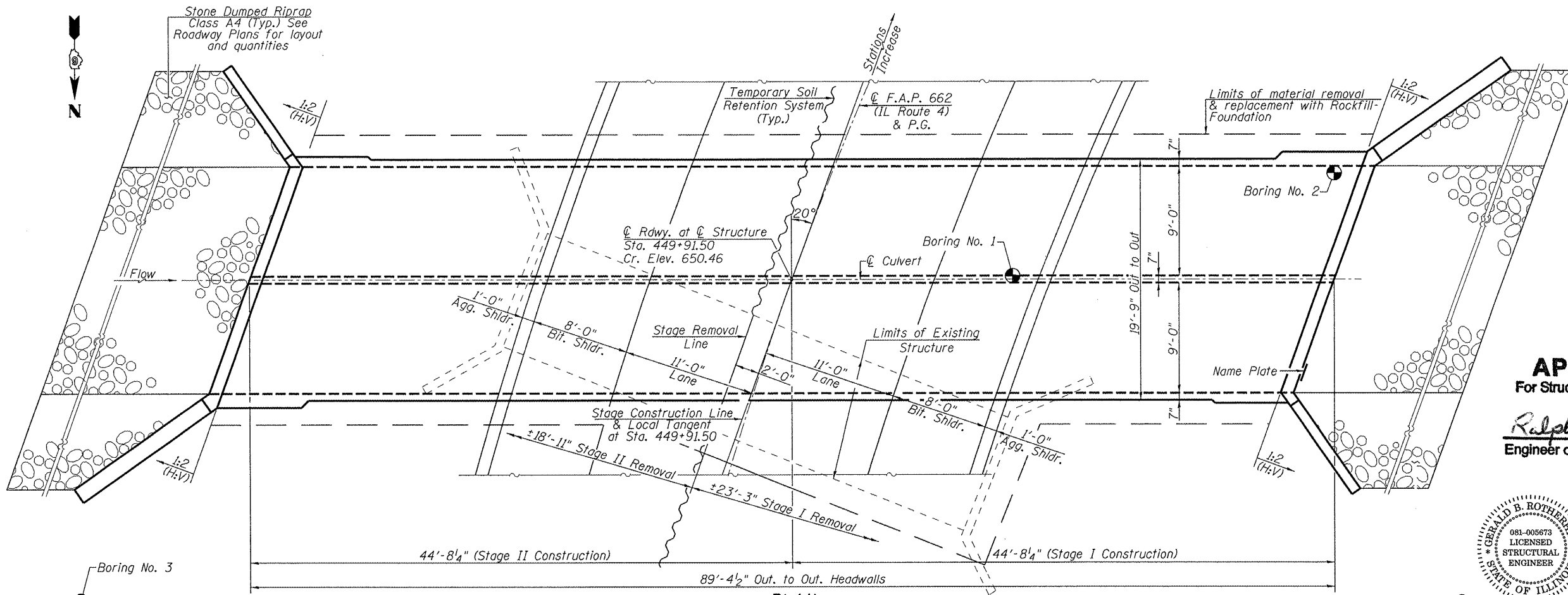
Notch formed by rough finished board attached to and removed with form work, each interior wall. (Do not chamfer).



LONGITUDINAL SECTION



SECTION A-A



PLAN

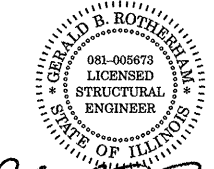
EXIST. CURVE 53

PI STA. = 450+24.67
 Δ = 2° 07' 32" (RT)
 D = 0° 46' 32"
 R = 7386.61'
 T = 137.00'
 L = 273.97'
 E = 1.27'
 P.C. STA. = 448+87.67
 P.T. STA. = 451+61.64
 No Superelevation Required

APPROVED
 For Structural Adequacy Only

Ralph E. Anderson
 Engineer of Bridges & Structures
 (TJD)

PHOEBE NESTING
SITE DETAILS
 (Downstream End Only)



[Signature]
 Date: 8/31/2009

GENERAL PLAN & ELEVATION
F.A.P. ROUTE 662 (IL. ROUTE 4)
SECTION D(W-3,RS-11)
MACOUPIN COUNTY
STA. 449+91.50
STRUCTURE NO. 059-7101



Allen Henderson & Associates, Inc.
 Civil and Structural Engineers Springfield, IL.
 62703 Phone: (217)544-8033 IL. Design Firm
 No. 184-001907

SHEET NO. 1 9 SHEETS	F.A.P. RTE. 662	SECTION D(W-3,RS-11,CR)	COUNTY MACOUPIN	TOTAL SHEETS 102	SHEET NO. 64
	FED. ROAD DIST. NO. ILLINOIS FED. AID PROJECT			CONTRACT NO. 72765	