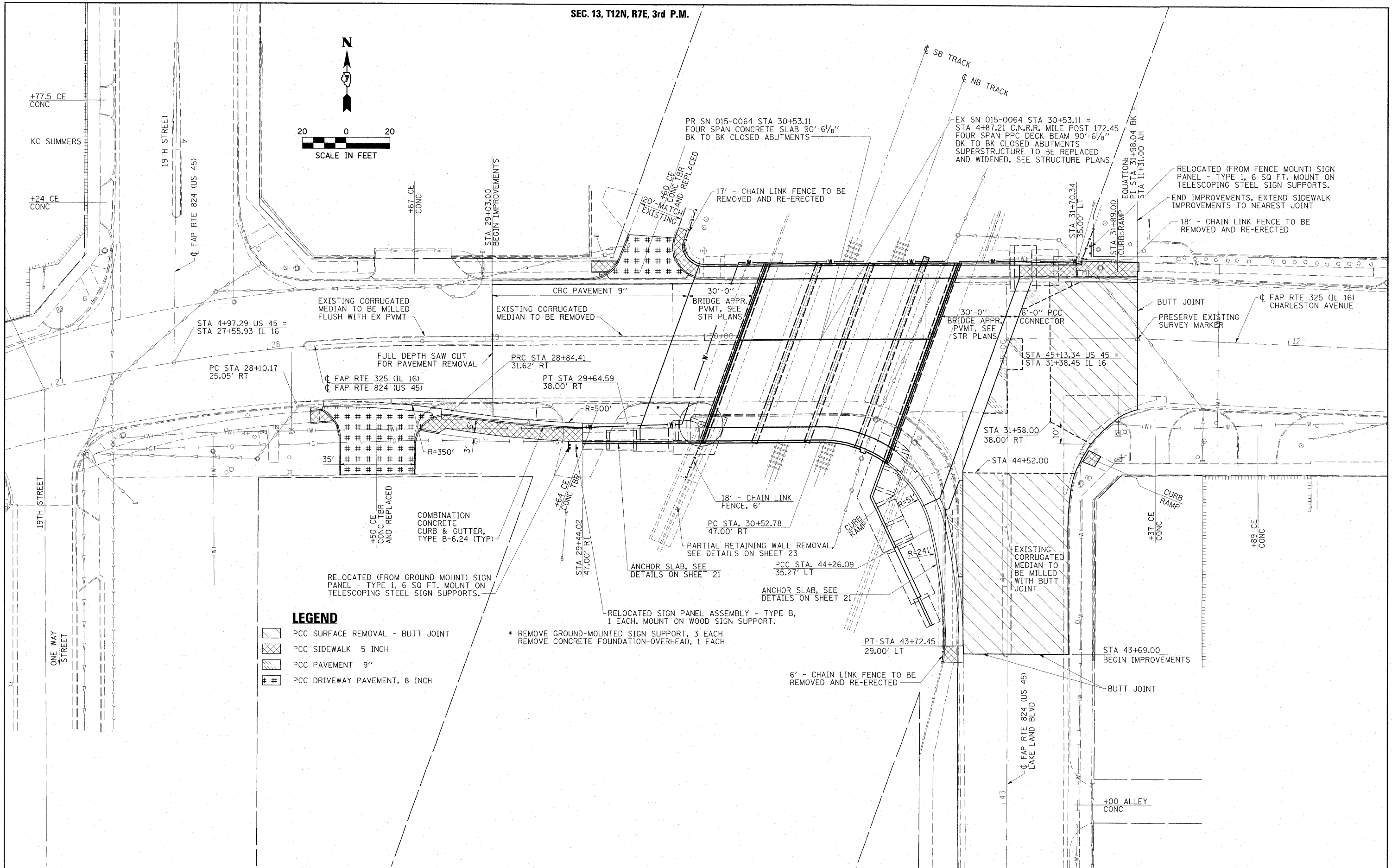


PLAN	DATE	BY
SURVEYED		
NOTE BOOK		
ALIGNMENT CHECKED		
RT. OF WAY CHECKED		
PROP. FILE NAME		
NO.		

PROFILE	DATE	BY
SURVEYED		
GRADES CHECKED		
E.M. NOTED		
STRUCTURE NOTATIONS CTRD		
NO.		



LEGEND

- PCC SURFACE REMOVAL - BUTT JOINT
- PCC SIDEWALK 5 INCH
- PCC PAVEMENT 9"
- PCC DRIVEWAY PAVEMENT, 8 INCH

- REMOVE GROUND-MOUNTED SIGN SUPPORT, 3 EACH REMOVE CONCRETE FOUNDATION-OVERHEAD, 1 EACH

FILE NAME =	USER NAME = HAS
D774149-SHT-Plan-F01.dgn	
PLOT SCALE = 20.0000' / IN.	CHECKED - MTD
PLOT DATE = 7/31/2009 10:23:39 AM	DATE - AUGUST 3, 2009

DESIGNED - MTD	REVISED -
DRAWN - HAS	REVISED -
CHECKED - MTD	REVISED -
DATE - AUGUST 3, 2009	REVISED -

**STATE OF ILLINOIS
DEPARTMENT OF TRANSPORTATION**

US 45 /IL 16 PLAN	
SCALE: 1"=20'	SHEET NO. 1 OF 1 SHEETS
STA. 26+80	TO STA. 12+45

F.A.P. RTE. 325	SECTION (19VB)BR	COUNTY COLES	TOTAL SHEETS 92	SHEET NO. 12
FED. ROAD DIST. NO. ILLINOIS FED. AID PROJECT			CONTRACT NO. 74149	