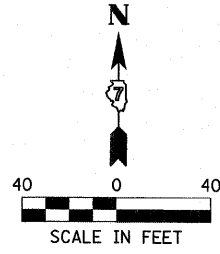




- LEGEND**
- ↑ ARROW BOARD
  - ▭ WORK AREA
  - DRUM WITH STEADY BURNING MONODIRECTIONAL LIGHT
  - ⊥ SIGN ON PORTABLE OR PERMANENT SUPPORT
  - ▬ BARRICADE OR DRUM WITH STEADY BURNING MONODIRECTIONAL LIGHT
  - ⊥ TYPE I OR II BARRICADE
  - ⊥ TYPE III BARRICADE WITH FLASHING LIGHTS
  - ◀ AMBER MONODIRECTIONAL TEMPORARY RAISED REFLECTIVE PAVEMENT MARKER
  - SINGLE 2100 POUND SAND MODULE PAID FOR AS "IMPACT ATTENUATOR, TEMPORARY"

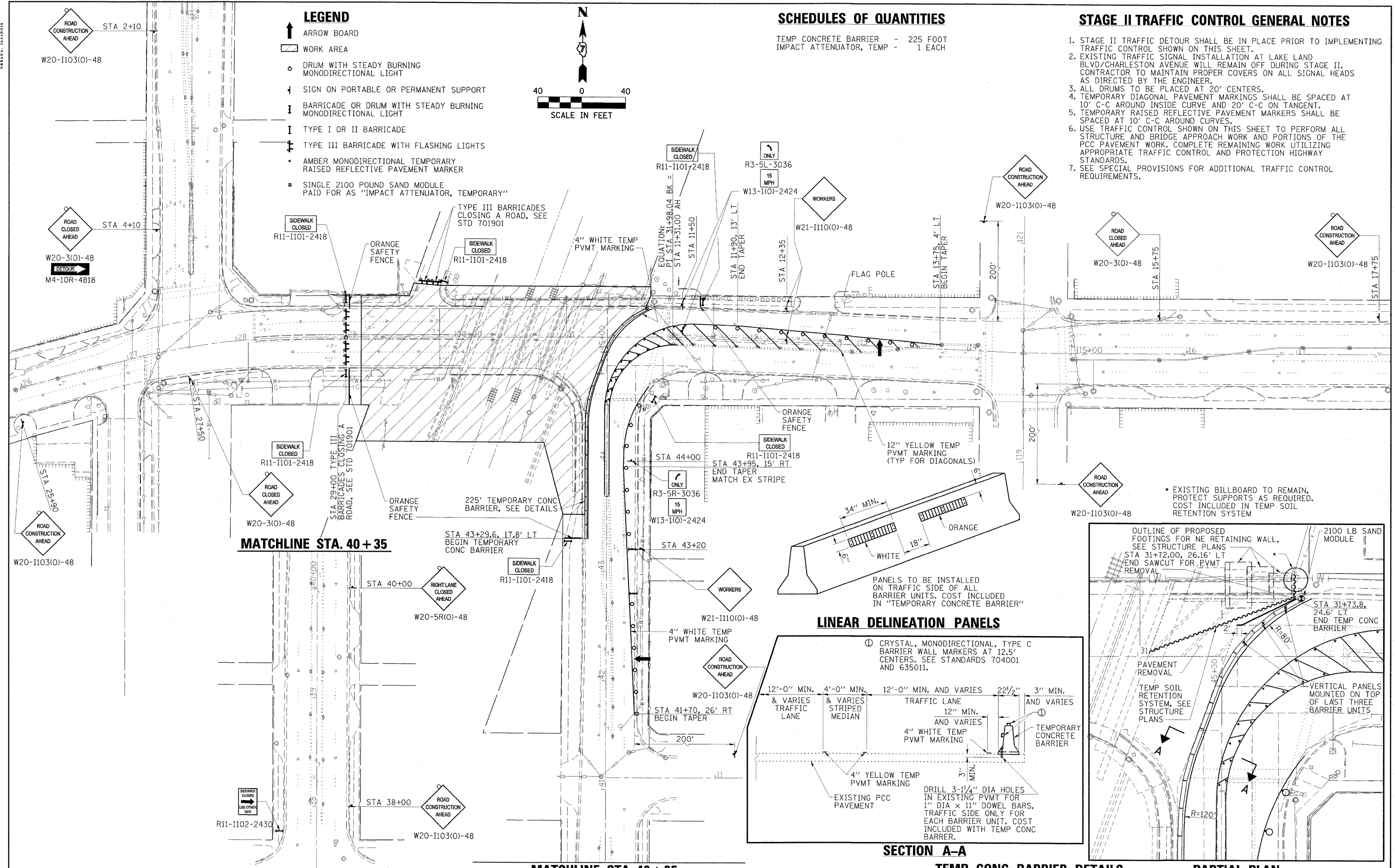


**SCHEDULES OF QUANTITIES**

TEMP CONCRETE BARRIER - 225 FOOT  
 IMPACT ATTENUATOR, TEMP - 1 EACH

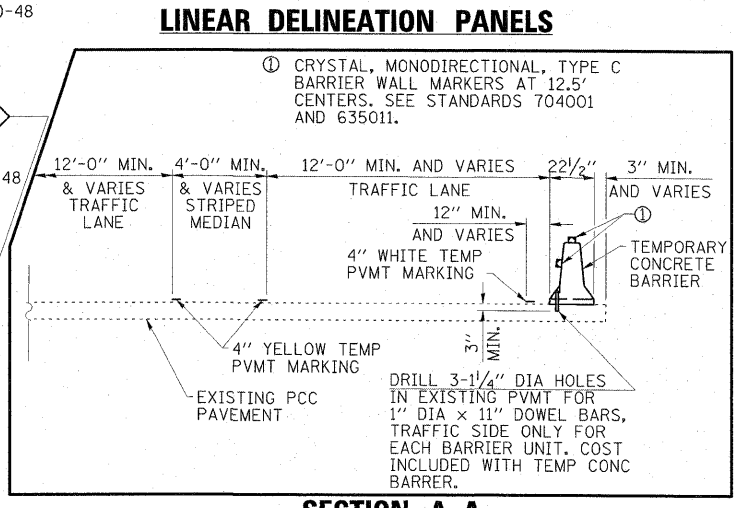
**STAGE II TRAFFIC CONTROL GENERAL NOTES**

1. STAGE II TRAFFIC DETOUR SHALL BE IN PLACE PRIOR TO IMPLEMENTING TRAFFIC CONTROL SHOWN ON THIS SHEET.
2. EXISTING TRAFFIC SIGNAL INSTALLATION AT LAKE LAND BLVD/CHARLESTON AVENUE WILL REMAIN OFF DURING STAGE II. CONTRACTOR TO MAINTAIN PROPER COVERS ON ALL SIGNAL HEADS AS DIRECTED BY THE ENGINEER.
3. ALL DRUMS TO BE PLACED AT 20' CENTERS.
4. TEMPORARY DIAGONAL PAVEMENT MARKINGS SHALL BE SPACED AT 10' C-C AROUND INSIDE CURVE AND 20' C-C ON TANGENT.
5. TEMPORARY RAISED REFLECTIVE PAVEMENT MARKERS SHALL BE SPACED AT 10' C-C AROUND CURVES.
6. USE TRAFFIC CONTROL SHOWN ON THIS SHEET TO PERFORM ALL STRUCTURE AND BRIDGE APPROACH WORK AND PORTIONS OF THE PCC PAVEMENT WORK. COMPLETE REMAINING WORK UTILIZING APPROPRIATE TRAFFIC CONTROL AND PROTECTION HIGHWAY STANDARDS.
7. SEE SPECIAL PROVISIONS FOR ADDITIONAL TRAFFIC CONTROL REQUIREMENTS.



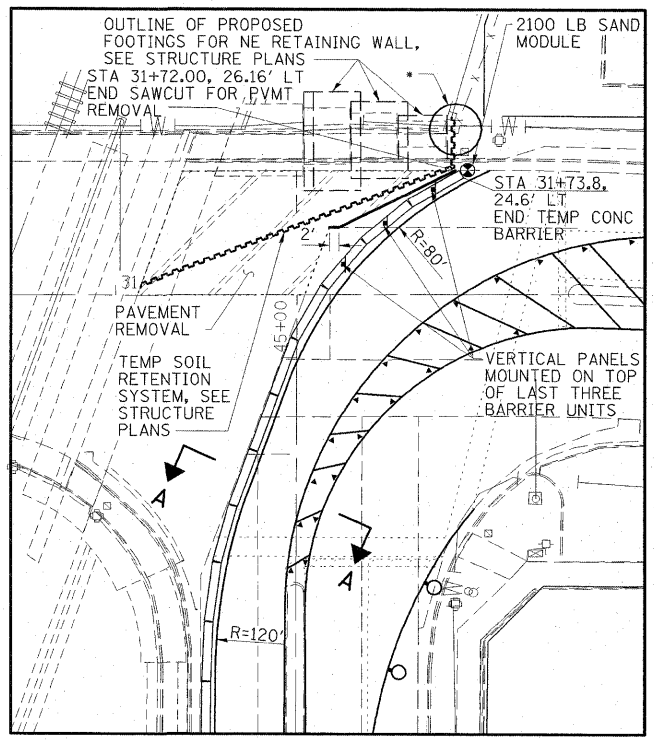
**MATCHLINE STA. 40 + 35**

**MATCHLINE STA. 40 + 35**



**SECTION A-A**

**TEMP CONC BARRIER DETAILS**



FILE NAME = 0774149-SHT-5taging02.dgn

USER NAME = HAS  
 PLOT SCALE = 0.0033 / IN.  
 PLOT DATE = 7/31/2009 10:24:33 AM

DESIGNED - MTD  
 DRAWN - HAS  
 CHECKED - MTD  
 DATE - AUGUST 3, 2009

REVISED -  
 REVISED -  
 REVISED -  
 REVISED -

**STATE OF ILLINOIS  
 DEPARTMENT OF TRANSPORTATION**

**STAGE II TRAFFIC CONTROL PLAN**

SCALE: 1"=40' SHEET NO. 1 OF 1 SHEETS STA. 26+00 TO STA. 17+80

F.A.P. RTE. 325	SECTION (19VBR)BR	COUNTY COLES	TOTAL SHEETS 92	SHEET NO. 15
CONTRACT NO. 74149				FED. ROAD DIST. NO. ILLINOIS
FED. AID PROJECT AID				