

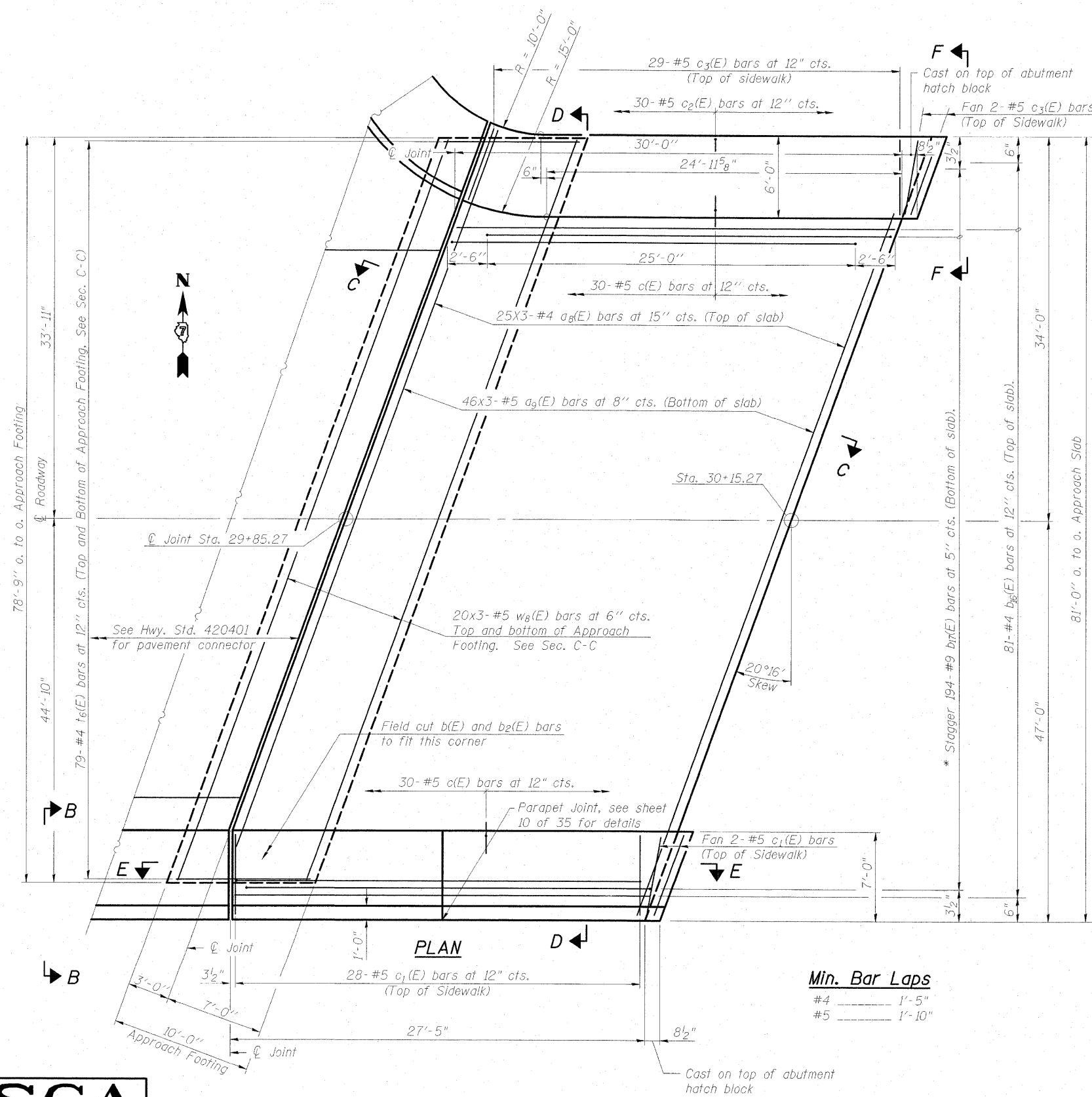
0150064-74149-12-WAP-Slab01.dgn 7/31/2009 12:36:05 PM HAS

STATE OF ILLINOIS
DEPARTMENT OF TRANSPORTATION

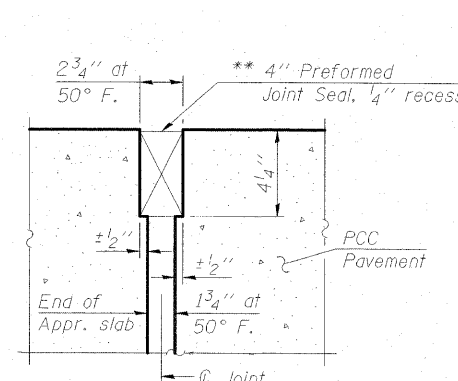
* Tilt #9 $b_7(E)$ bars as required to maintain clearance.

Notes:

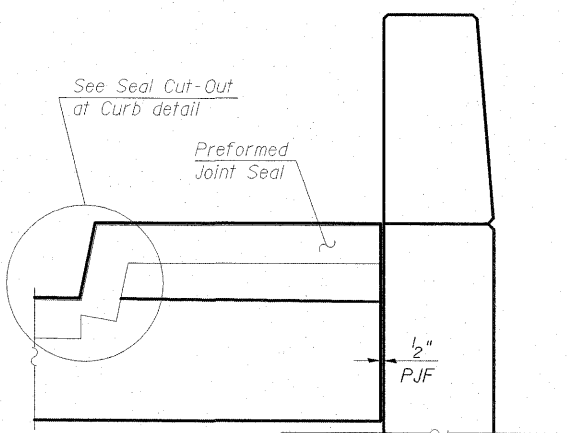
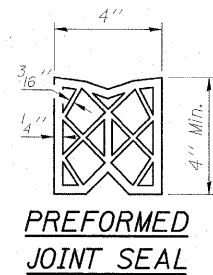
See sheet 13 of 35 for Sections C-C & D-D and View E-E.
 $a_8(E)$, $a_9(E)$ and $w_8(E)$ bar spacings measured parallel to \varnothing Rdwy.
Bars indicated thus: 46x3 - #5 etc. indicates 46 lines of bars with 3 lengths per line.



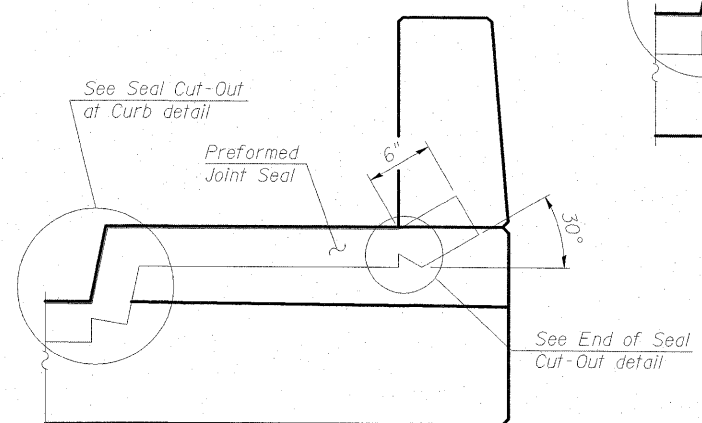
** Cost included with Concrete Superstructure.



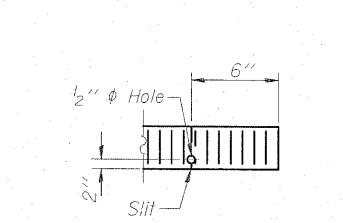
DETAIL A



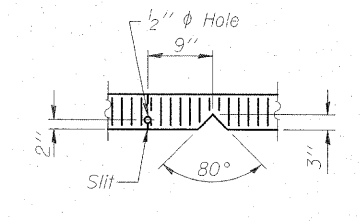
VIEW F-F



VIEW B-B



END OF SEAL CUT-OUT



SEAL CUT-OUT AT CURB

Min. Bar Laps

#4	1'-5"
#5	1'-10"

(Sheet 1 of 2)

WEST BRIDGE APPROACH SLAB DETAILS
STRUCTURE NO. 015-0064

ESCA
CONSULTANTS, INC.

DESIGNED BY:	MTD	03/09
DRAWN BY:	HAS	03/09
CHECKED BY:	MTD	03/09
APPROVED BY:	RDP	08/09

SHEET NO. 12 35 SHEETS	F.A.P. RTE.	SECTION	COUNTY	TOTAL SHEETS	SHEET NO.
	325	(19VBR)BR	COLES	92	36
CONTRACT NO. 74149					
FED. ROAD DIST. NO.		ILLINOIS FED. AID PROJECT			