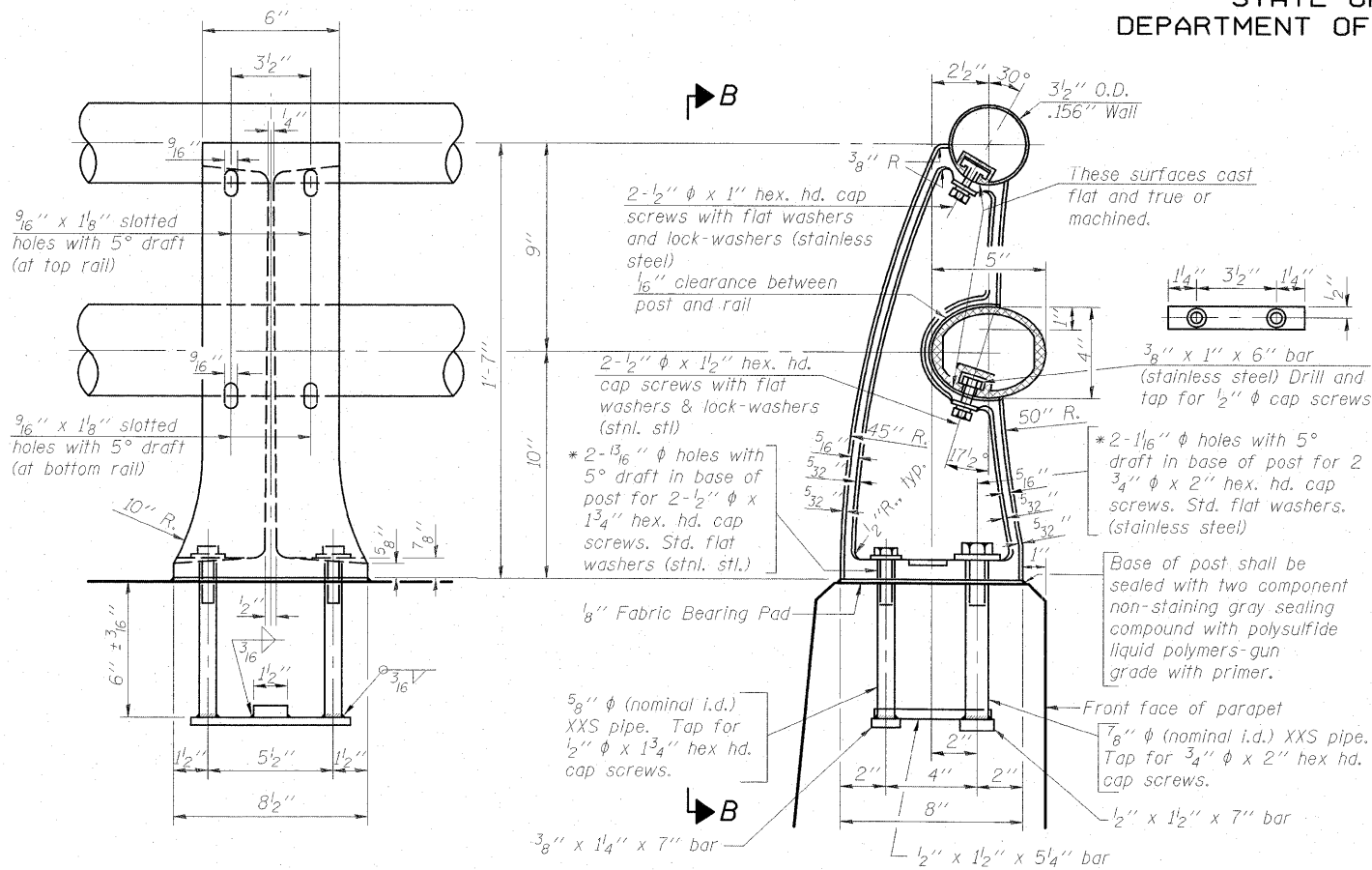


STATE OF ILLINOIS
DEPARTMENT OF TRANSPORTATION

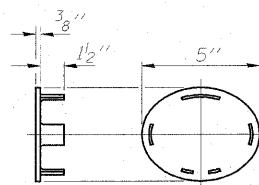


VIEW B-B

RAIL POST DETAILS

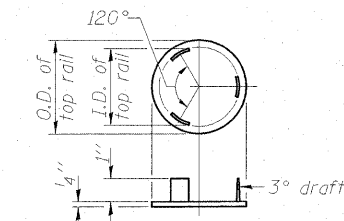
SECTION A-A

* In lieu of the cast-in-place anchor device shown, the Contractor has the option of drilling and setting stainless steel anchor rods of the same diameter and grade as the specified cap screws according to Article 509.06 of the Standard Specifications. Embedment shall be according to the manufacturer's specifications.



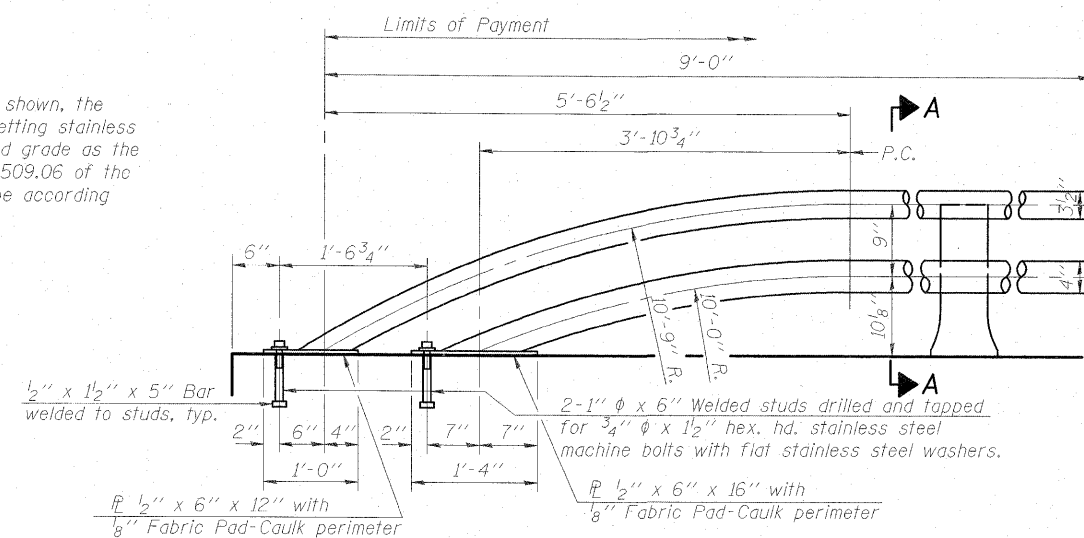
CAST END CAP

For bottom rail
DRIVE FIT TYPE



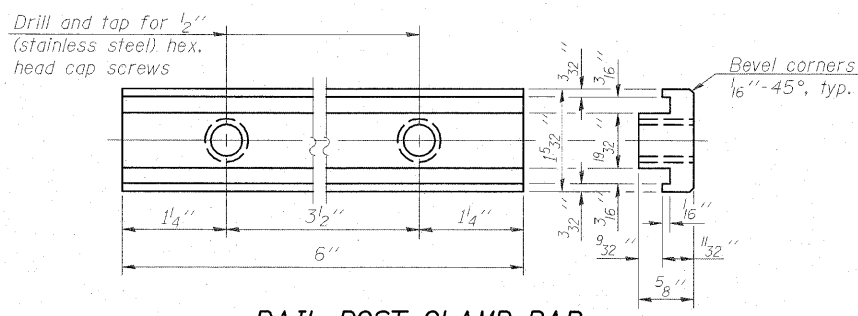
CAST END CAP

For top rail



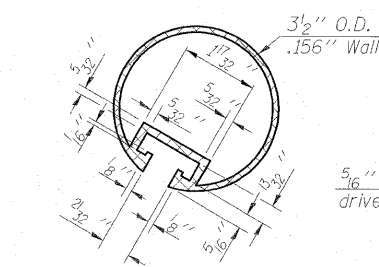
RAIL TERMINAL SECTION

Note:
The end rail post shall be set back as required for the terminal rail section.

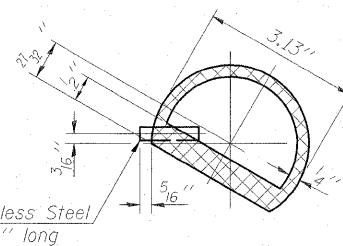


RAIL POST CLAMP BAR

For Top Rail

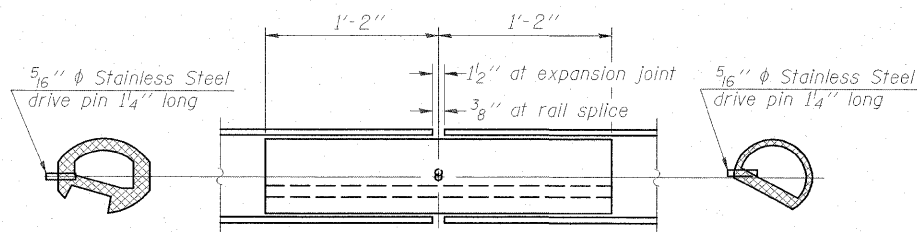


SECTION THRU TOP RAIL

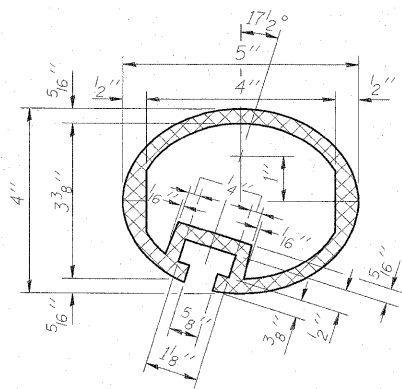


SECTION THRU SPLICE

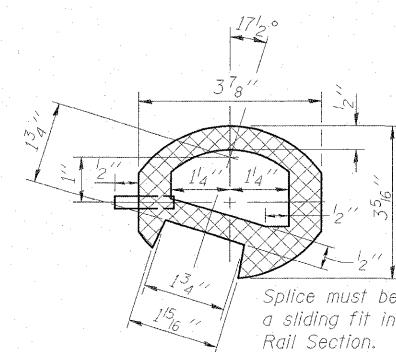
For Top Rail



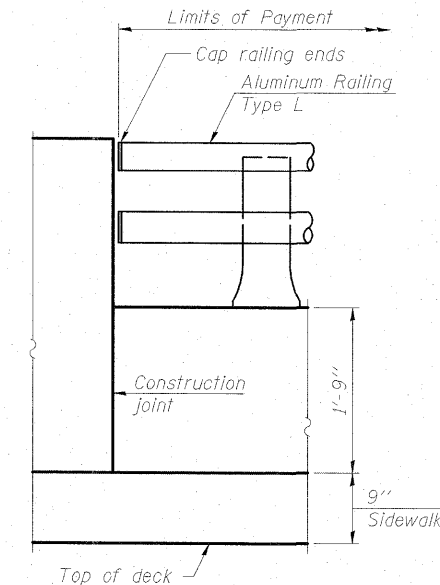
RAIL SPLICE



SEC. THRU ELLIPTICAL
RAIL SECTION



SEC. THRU SPLICE



RAIL END TREATMENT FOR
TYPE 5 AND 6 TERMINAL

Notes:
All Posts shall be normal to parapet.
All joints in rail shall be spliced per detail.
All exposed rail ends shall be capped per detail.
Provide 1-1/8" and 2-1/16" Aluminum Shims for 25% of the Posts. Rail elements shall be parallel to Grade-high spots will be ground and low spots shimmed.
See sheet 11 of 35 for rail post spacing.

BILL OF MATERIAL

Item	Unit	Quantity
Aluminum Railing, Type L	Foot	142
Removing and Re-Erecting Existing Railing	Foot	158

ALUMINUM RAILING, TYPE L
STRUCTURE NO. 015-0064

ESCA
CONSULTANTS, INC.

DESIGNED BY: DAJ 11/08
DRAWN BY: RJT 11/08
CHECKED BY: MTD 03/09
APPROVED BY: RDP 08/09

R-20 10-1-08 (7'-0" to 10'-0" Post spacing)

SHEET NO. 16	F.A.P. RTE.	SECTION	COUNTY	TOTAL SHEETS	SHEET NO.
35 SHEETS	325	(19VBR)BR	COLES	92	40
CONTRACT NO. 74149					
FED. ROAD DIST. NO.		ILLINOIS FED. AID PROJECT			