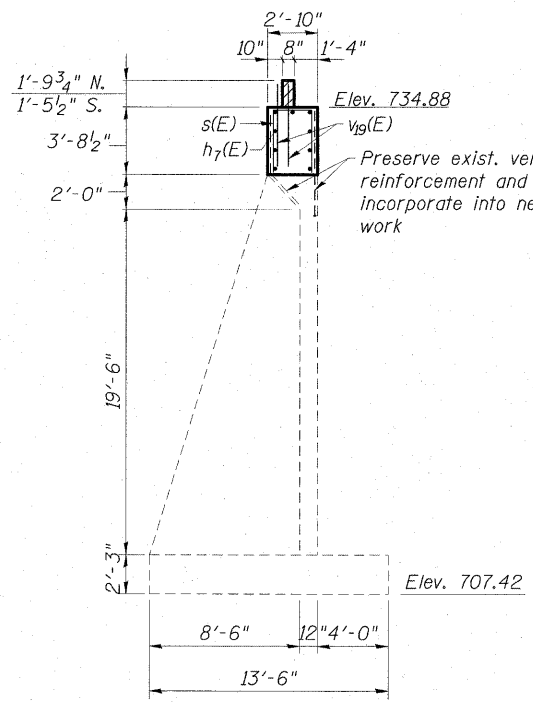


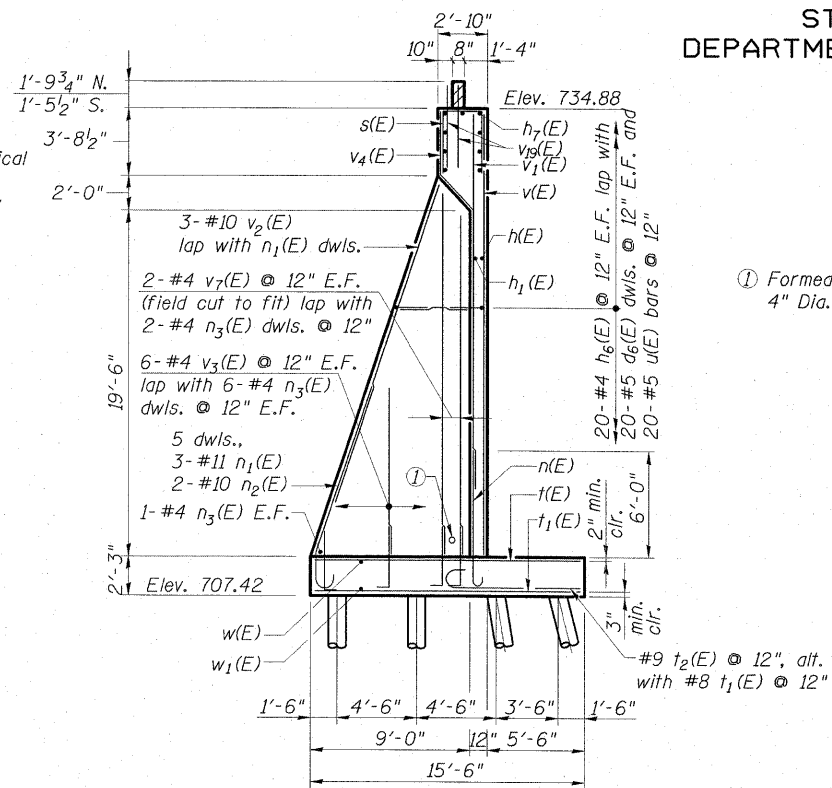
8/15/08 4:41 PM - W:\abut\015-0064\123654.PLT

STATE OF ILLINOIS
DEPARTMENT OF TRANSPORTATION

WEST ABUTMENT
BILL OF MATERIAL

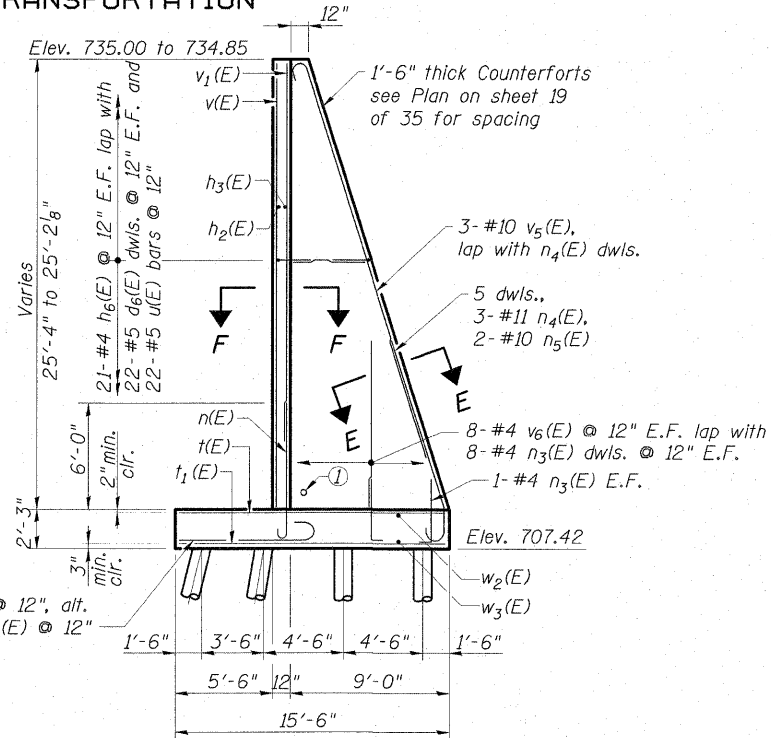


SECTION B-B

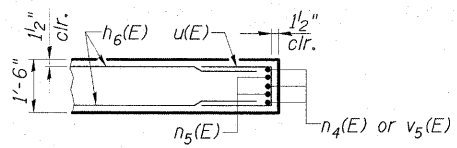


SECTION C-C

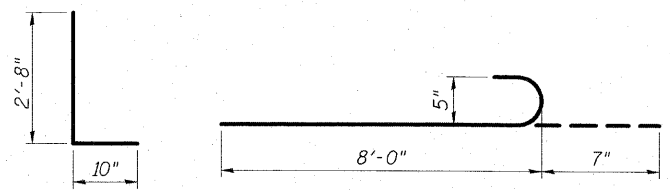
① Formed hole for 4" Dia. Pipe Drain



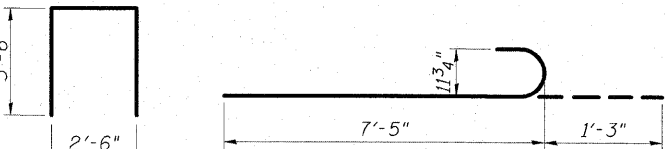
SECTION D-D



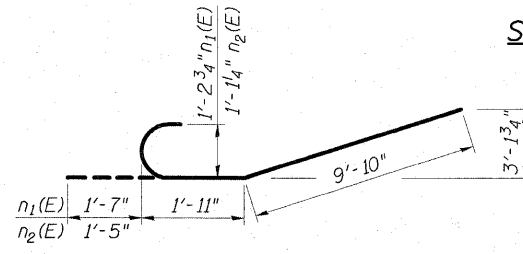
SECTION E-E



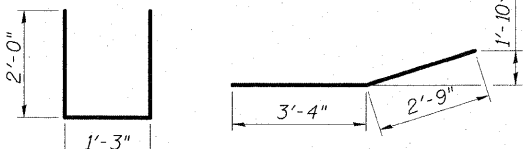
BAR d6(E)



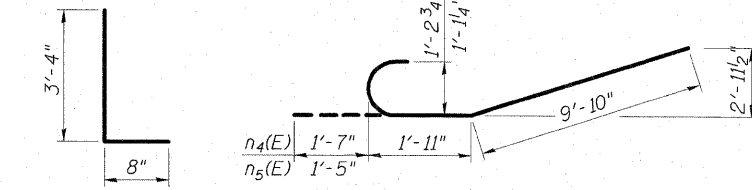
BAR n(E)



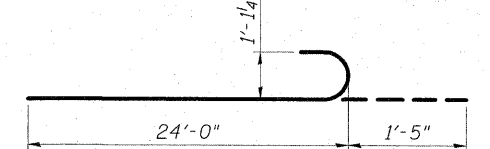
BARS n1(E) & n2(E)



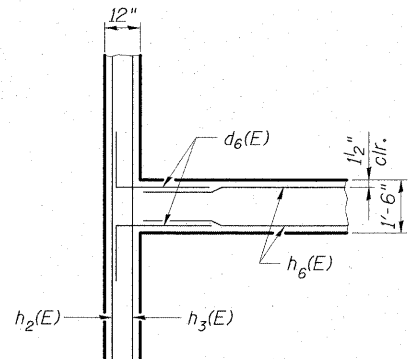
BAR n3(E)



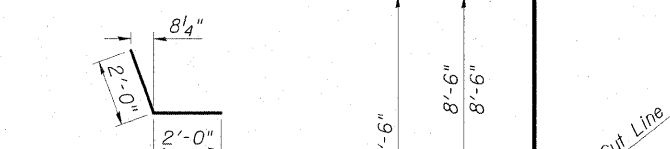
BARS n4(E) & n5(E)



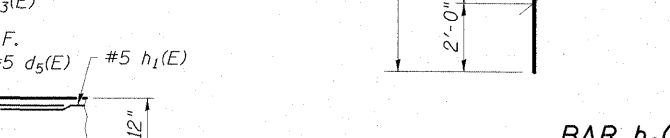
BAR v5(E)



SECTION F-F

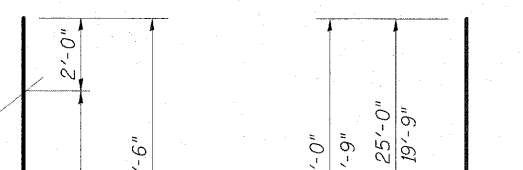


BAR s(E)

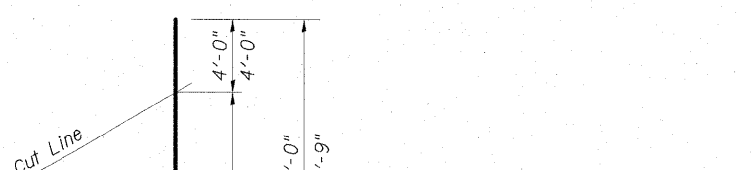


BAR t2(E)

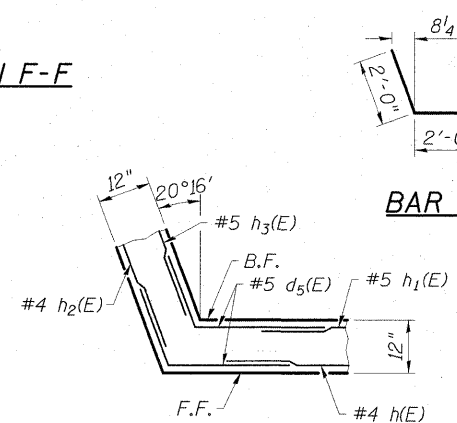
BAR BENDING DETAILS



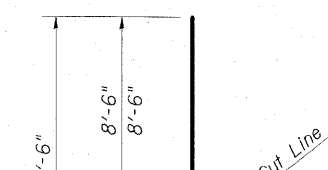
BAR u(E)



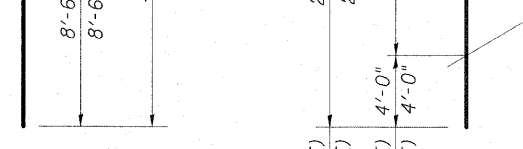
BAR v4(E)



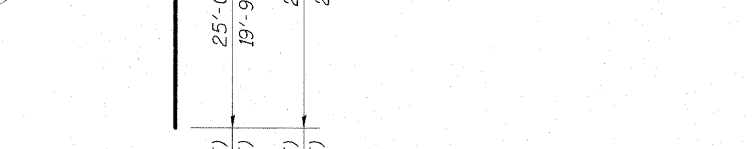
SECTION G-G



BAR h6(E)



BARS v3(E) & v6(E)



BAR v6(E)

Bar	No.	Size	Length	Shape
d5(E)	44	#5	4'-0"	L
d6(E)	128	#5	3'-6"	L
h(E)	22	#4	12'-1"	
h1(E)	22	#5	11'-0"	
h2(E)	22	#4	14'-6"	
h3(E)	22	#5	13'-6"	
h4(E)	4	#4	11'-7"	
h5(E)	4	#5	11'-7"	
h6(E)	62	#4	10'-6"	
h7(E)	27	#5	30'-3"	
n(E)	22	#5	8'-7"	
n1(E)	3	#11	13'-4"	
n2(E)	2	#10	13'-2"	
n3(E)	54	#4	4'-0"	
n4(E)	6	#11	13'-4"	
n5(E)	4	#10	13'-2"	
s(E)	88	#4	9'-6"	
t(E)	32	#6	15'-2"	
t1(E)	26	#8	15'-2"	
t2(E)	19	#9	8'-8"	
t3(E)	4	#9	6'-1"	
t4(E)	1	#6	15'-10"	
u(E)	64	#5	5'-3"	
v(E)	22	#4	25'-0"	
v1(E)	22	#4	20'-10"	
v2(E)	3	#10	20'-9"	
v3(E)	6	#4	23'-9"	
v4(E)	13	#4	6'-1"	
v5(E)	6	#10	25'-5"	
v6(E)	16	#4	29'-0"	
v7(E)	4	#4	20'-4"	
v9(E)	176	#5	4'-0"	
w(E)	16	#7	17'-5"	
w1(E)	16	#6	17'-5"	
w2(E)	16	#7	10'-0"	
w3(E)	16	#6	10'-0"	

Concrete Structures	Cu. Yd.	108.0
Reinforcement Bars, Epoxy Coated	Pound	12050
Structure Excavation	Cu. Yd.	385
Test Pile Metal Shells	Each	1
Furnishing Metal Shell Piles 12"x0.25"	Lin. Ft.	1100
Driving Piles	Lin. Ft.	1100
Epoxy Crack Injection	Foot	125
Structural Repair of Concrete, Depth $\le 5''$	Sq. Ft.	37
Concrete Sealer	Sq. Ft.	616
Concrete Removal	Cu. Yd.	43

MIN. BAR LAP
#4 1'-4"
#5 1'-10"
#10 7'-3"

WEST ABUTMENT DETAILS
STRUCTURE NO. 015-0064

ESCA
CONSULTANTS, INC.
DESIGNED BY: RDP/DAJ 11/08
DRAWN BY: DWH/cj 11/08
CHECKED BY: RDP 03/09
APPROVED BY: RDP 08/09

FIELD CUTTING DIAGRAMS
Order h6(E), v3(E) & v6(E) full length.
Cut as shown and use remainder of bars in opposite face.

SHEET NO. 20	F.A.P. RTE.	SECTION	COUNTY	TOTAL SHEETS	SHEET NO.
35 SHEETS	325	(19VBR)BR	COLES	92	44
			CONTRACT NO. 74149		
FED. ROAD DIST. NO.		ILLINOIS FED. AID PROJECT			