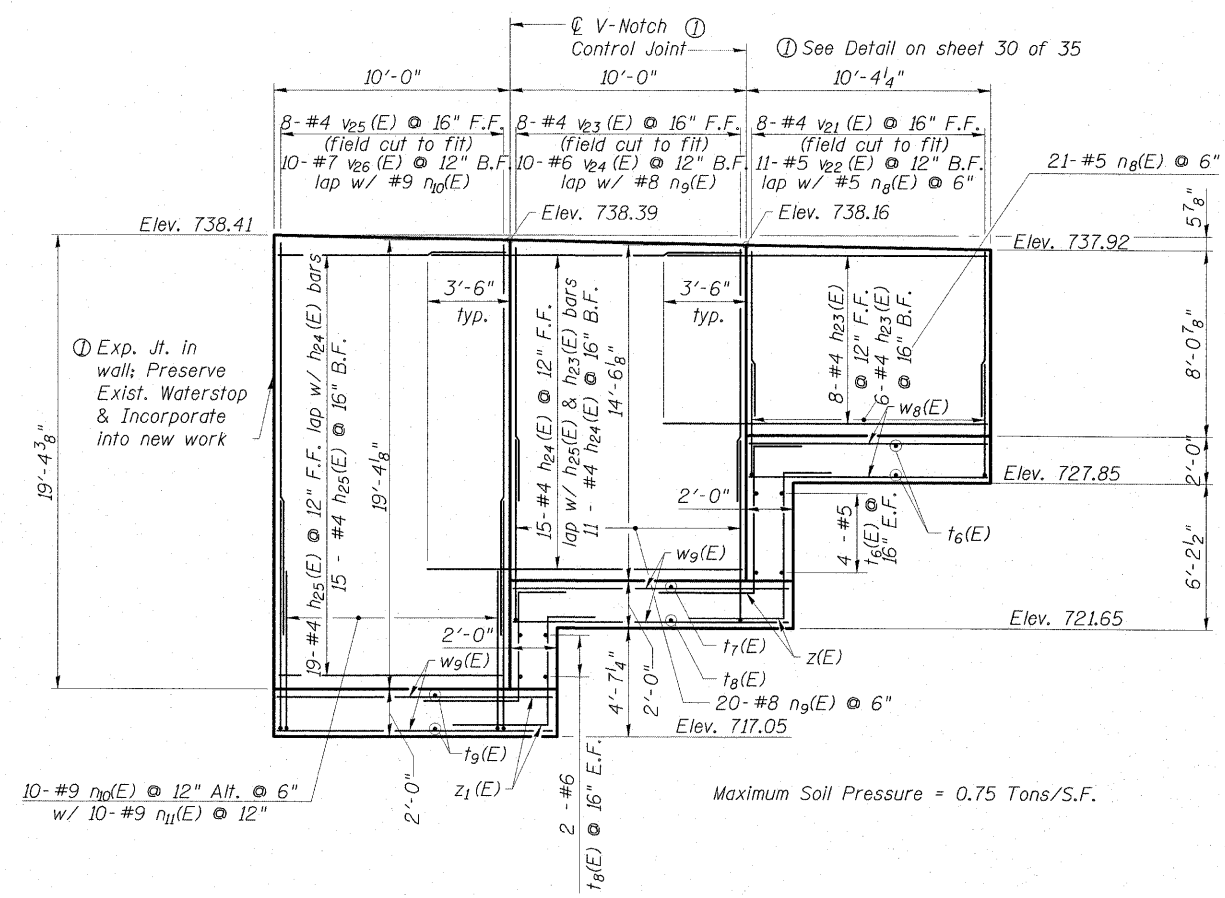


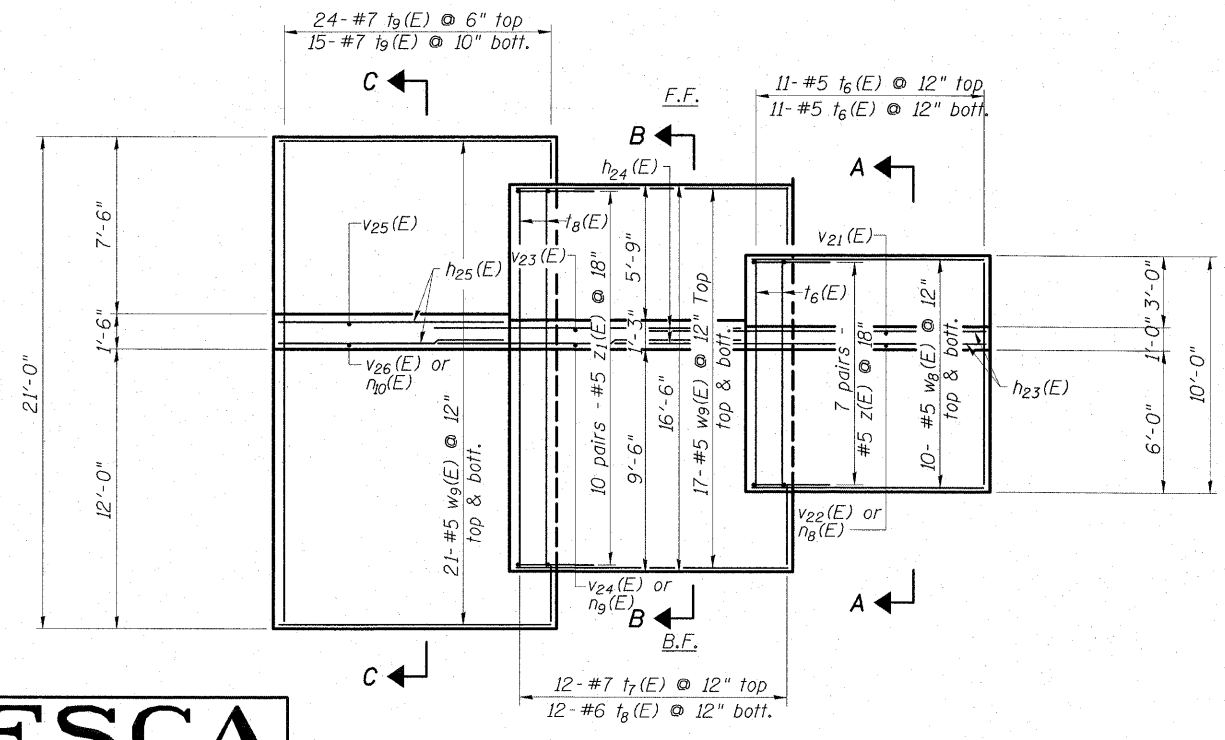
0150064-74149-27-NERetWall.dgn 7/31/2009 12:37:41 PM H45

STATE OF ILLINOIS
DEPARTMENT OF TRANSPORTATION

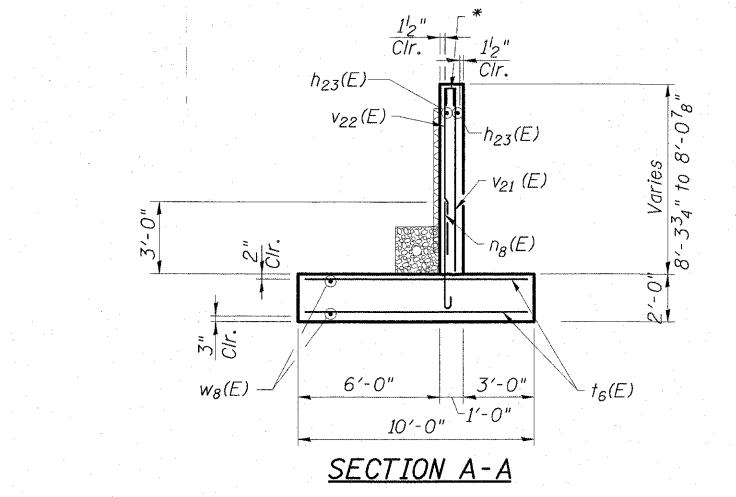
NE RETAINING WALL
BILL OF MATERIAL



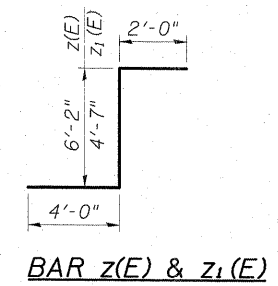
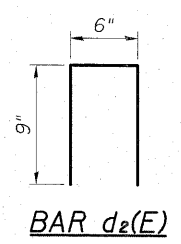
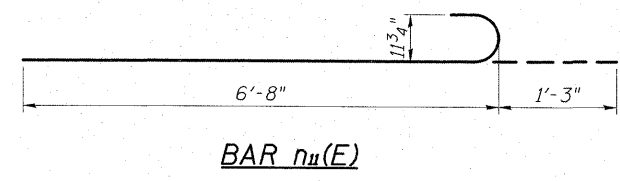
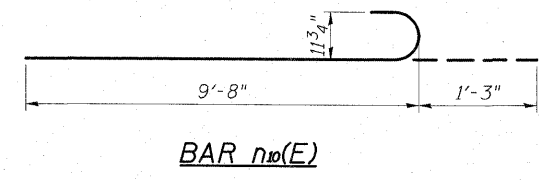
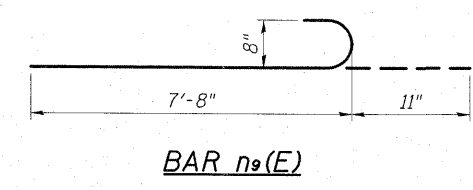
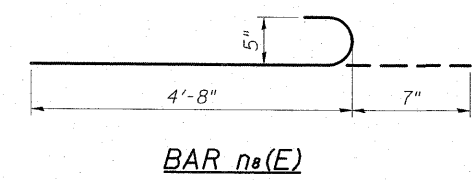
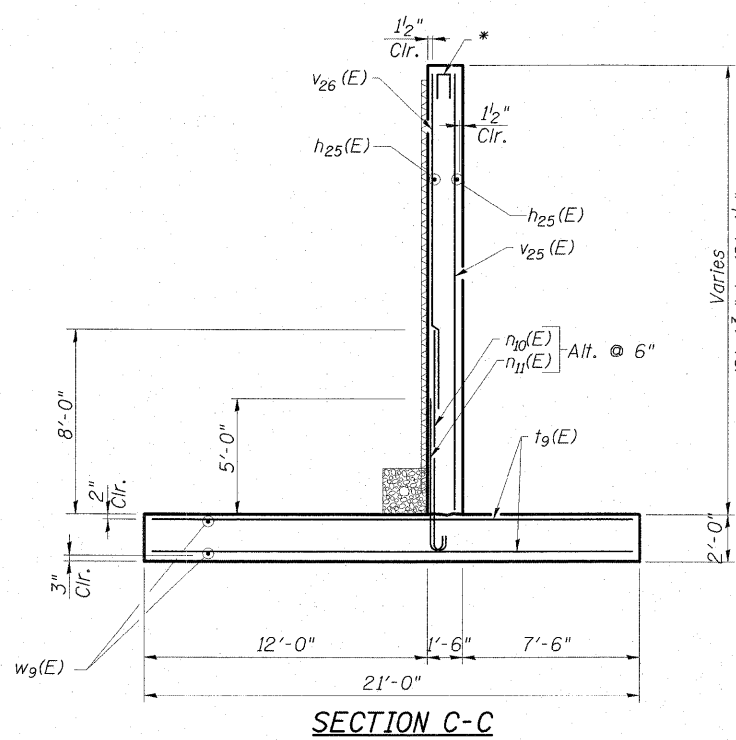
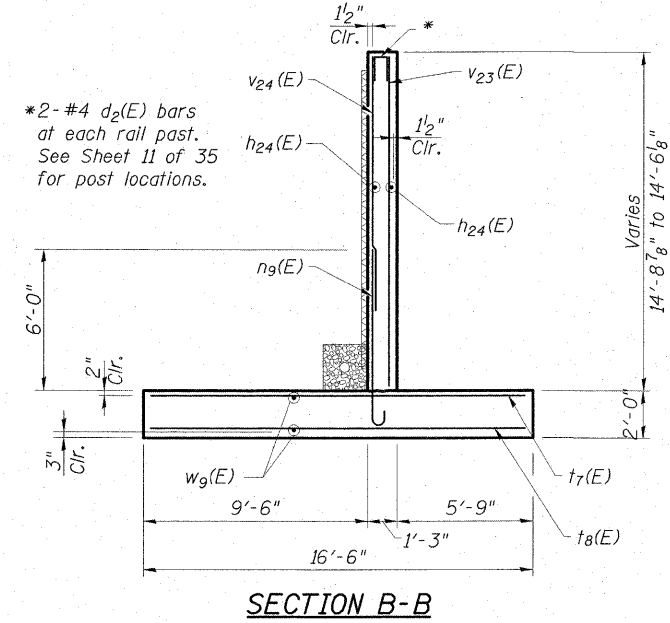
ELEVATION



PLAN



*2-#4 d₂(E) bars at each rail past. See Sheet 11 of 35 for post locations.



Bar	No.	Size	Length	Shape
d ₂ (E)	6	#4	2'-0"	□
h ₂₃ (E)	14	#4	13'-8"	—
h ₂₄ (E)	26	#4	13'-4"	—
h ₂₅ (E)	34	#4	9'-8"	—
n ₈ (E)	21	#5	5'-3"	⌋
n ₉ (E)	20	#8	8'-7"	⌋
n ₁₀ (E)	10	#9	10'-11"	⌋
n ₁₁ (E)	10	#9	7'-11"	—
t ₆ (E)	30	#5	9'-8"	—
t ₇ (E)	12	#7	16'-2"	—
t ₈ (E)	16	#6	16'-2"	—
t ₉ (E)	39	#7	20'-8"	—
v ₂₁ (E)	8	#4	7'-10"	—
v ₂₂ (E)	11	#5	6'-10"	—
v ₂₃ (E)	8	#4	14'-2"	—
v ₂₄ (E)	10	#6	10'-6"	—
v ₂₅ (E)	8	#4	19'-0"	—
v ₂₆ (E)	10	#7	14'-0"	—
w ₉ (E)	20	#5	10'-0"	—
w ₉ (E)	76	#5	11'-8"	—
z(E)	14	#5	12'-2"	⌋
z ₁ (E)	20	#5	10'-7"	⌋
Concrete Structures			Cu. Yd.	68.0
Reinforcement Bars, Epoxy Coated			Pound	6810
Structure Excavation			Cu. Yd.	235

MIN. BAR LAP

- #5 1'-8"
- #6 2'-0"
- #7 2'-9"

NE RETAINING WALL
STRUCTURE NO. 015-0064

ESCA
CONSULTANTS, INC.

DESIGNED BY: RDP 11/08
DRAWN BY: DWH 11/08
CHECKED BY: MTD 03/09
APPROVED BY: RDP 08/09

SHEET NO. 27 35 SHEETS	F.A.P. RTE.	SECTION	COUNTY	TOTAL SHEETS	SHEET NO.
		(19VBR)BR	COLES	92	51
			CONTRACT NO. 74149		
FED. ROAD DIST. NO.		ILLINOIS FED. AID PROJECT			