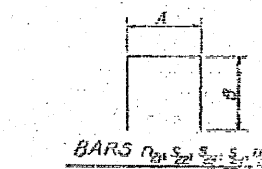
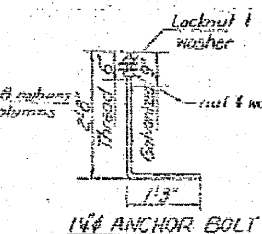
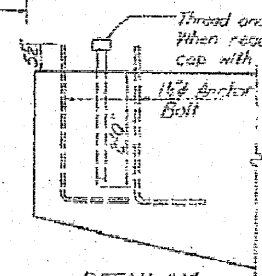
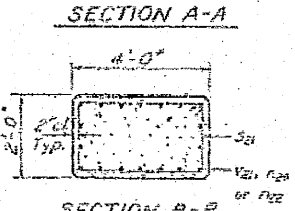
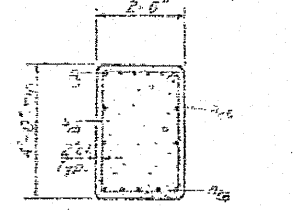
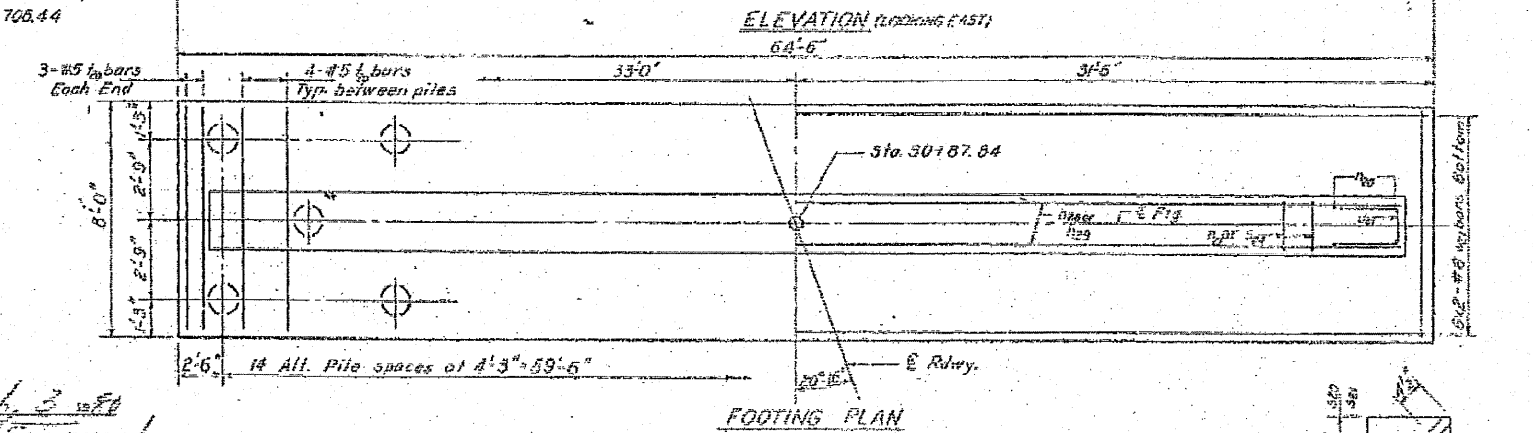
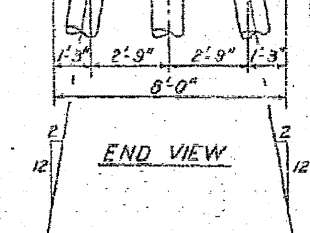
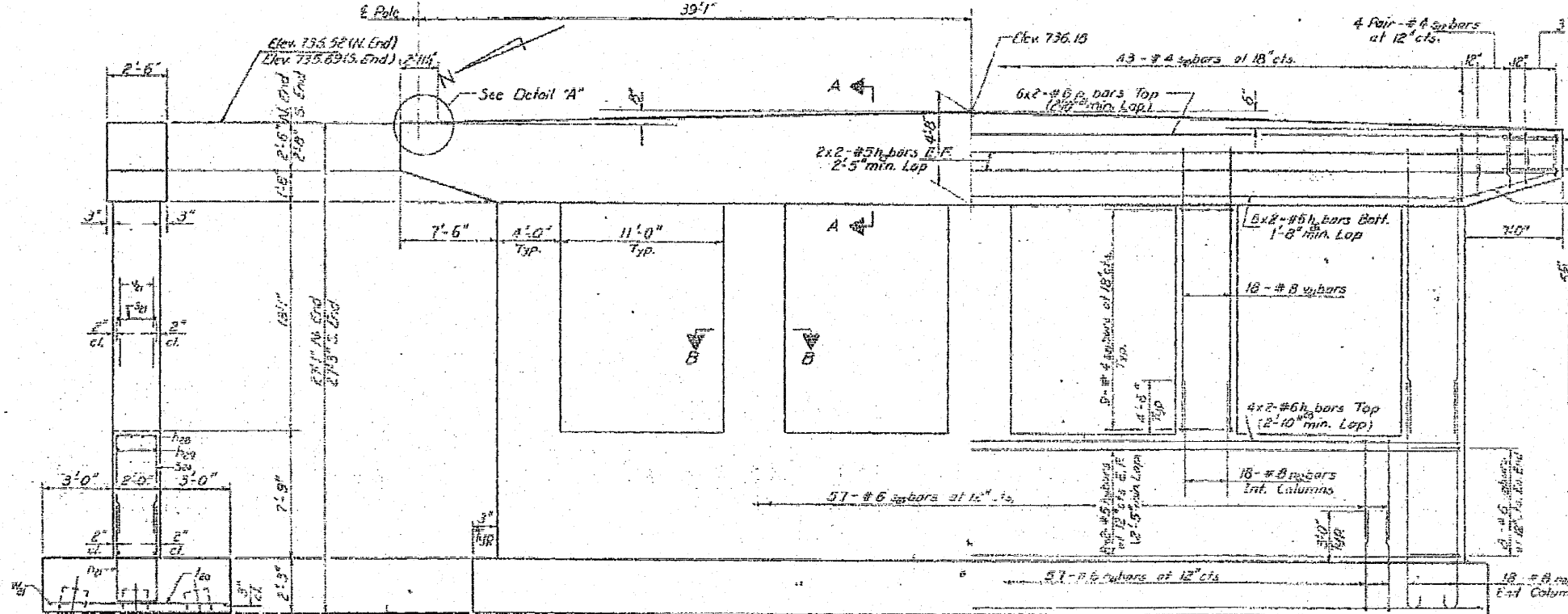
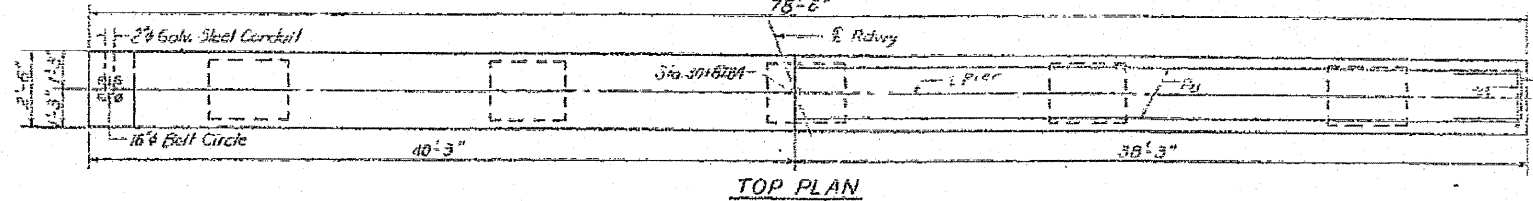


NOTES:
All edges shall have standard 4" chamfers except as noted.
Bars indicated thus 6x2-#6 etc. indicates 6 lines of bars with 2 lengths per line.

STATE OF ILLINOIS
DEPARTMENT OF TRANSPORTATION

NO.	REV.	DATE	BY	CHKD.
1				

COLES 15 38 80 SHEETS



A & B DIMENSIONS

Bar	A	B
101	15'-3"	11'-0"
102	15'-3"	11'-0"
103	15'-3"	11'-0"
104	15'-3"	11'-0"
105	15'-3"	11'-0"
106	15'-3"	11'-0"
107	15'-3"	11'-0"
108	15'-3"	11'-0"
109	15'-3"	11'-0"
110	15'-3"	11'-0"

BILL OF MATERIAL

Qty	Size	Length	Weight
10	#5	40'-0"	
10	#5	32'-0"	
10	#5	7'-0"	
8	#6	33'-0"	
32	#5	33'-0"	
38	#8	15'-0"	
57	#6	11'-0"	
24	#8	7'-0"	
12	#8	40'-0"	
43	#8	12'-0"	
25	#8	11'-0"	
16	#8	7'-0"	
12	#8	6'-0"	
57	#6	14'-0"	
62	#5	71'-0"	
6	#6	81'-0"	
16	#6	71'-0"	
90	#8	16'-0"	
72	#6	33'-0"	

Class X Concrete - Cu. Yds. 129.2
Reinforcement Bars - Lbs. 13890
Concrete Pile Bell Section P. 1. 616
Total Pile Volume - Cu. Yds. 1

FILE DATA
Type: Created
Capacity: 24 Tons
Est. Length: 28'
No. Required: 22 (1 test pile in a permanent location)

DESIGNED: [Signature]
CHECKED: [Signature]
DRAWN: R. D. [Signature]
CHECKED: R.B.
EXAMINED: [Signature]
PASSED: [Signature]
APPROVED: [Signature]

DATE: AUGUST 3, 2009

STATE OF ILLINOIS
DEPARTMENT OF TRANSPORTATION

SN 015-0064 EXISTING PLANS

SCALE: NONE SHEET NO. 13 OF 21 SHEETS STA. TO STA.

F.A.P. RTE.	SECTION	COUNTY	TOTAL SHEETS	SHEET NO.
325	(19VB)RBR	COLES	92	72

CONTRACT NO. 74149
FED. ROAD DIST. NO. ILLINOIS FED. AID PROJECT

FILE NAME = 0774149-sht-em63.dgn	USER NAME = HAS	DESIGNED - MTD	REVISED -
PLOT SCALE = 0.0033 1/16 IN.	CHECKED - MTD	DRAWN - RJT	REVISED -
PLOT DATE = 7/31/2009 2:22:48 PM	DATE - AUGUST 3, 2009	CHECKED - MTD	REVISED -