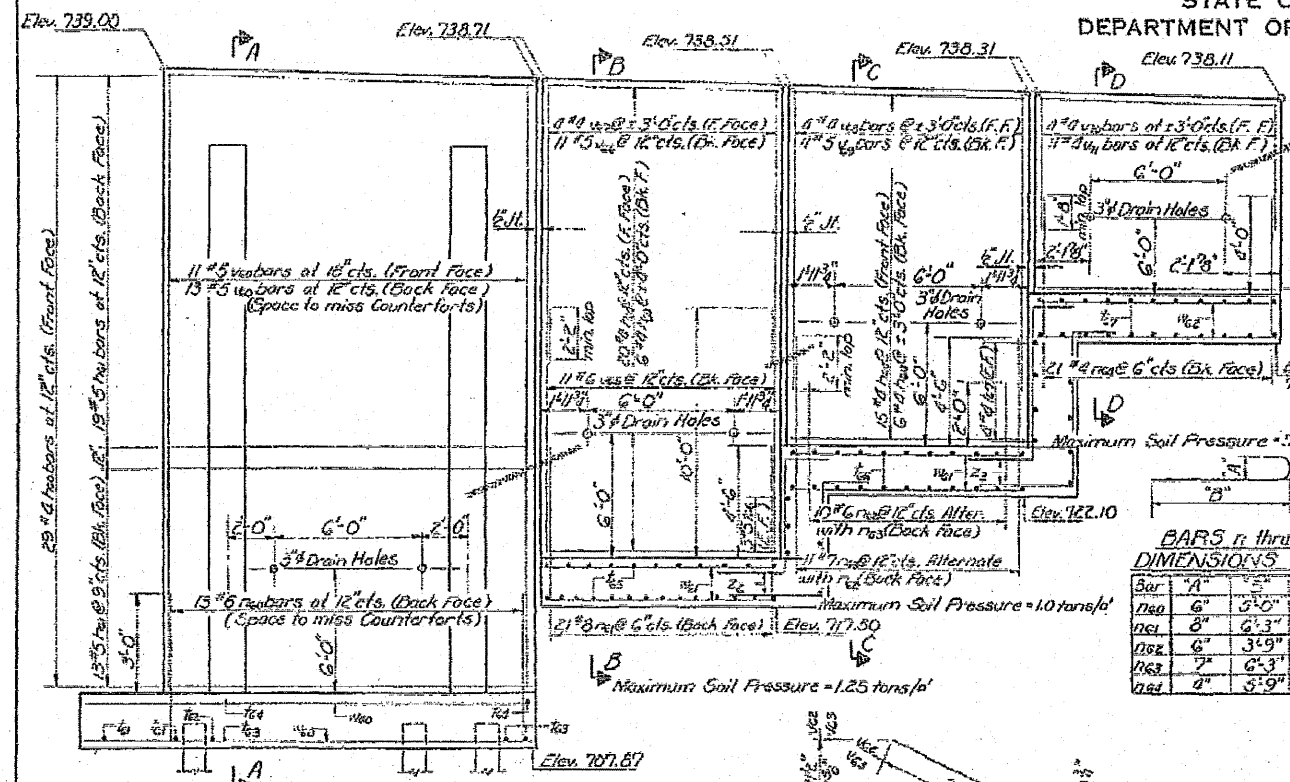


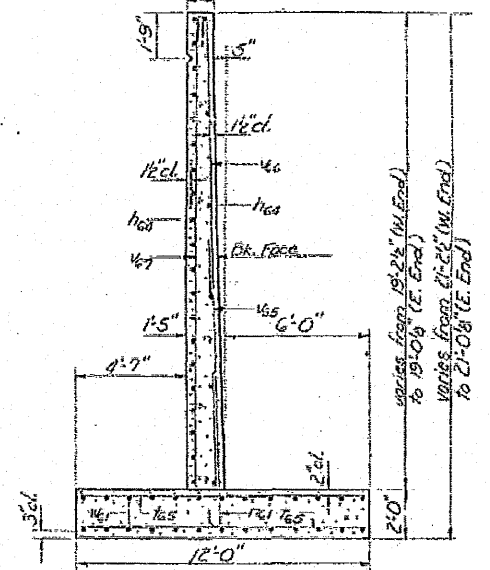
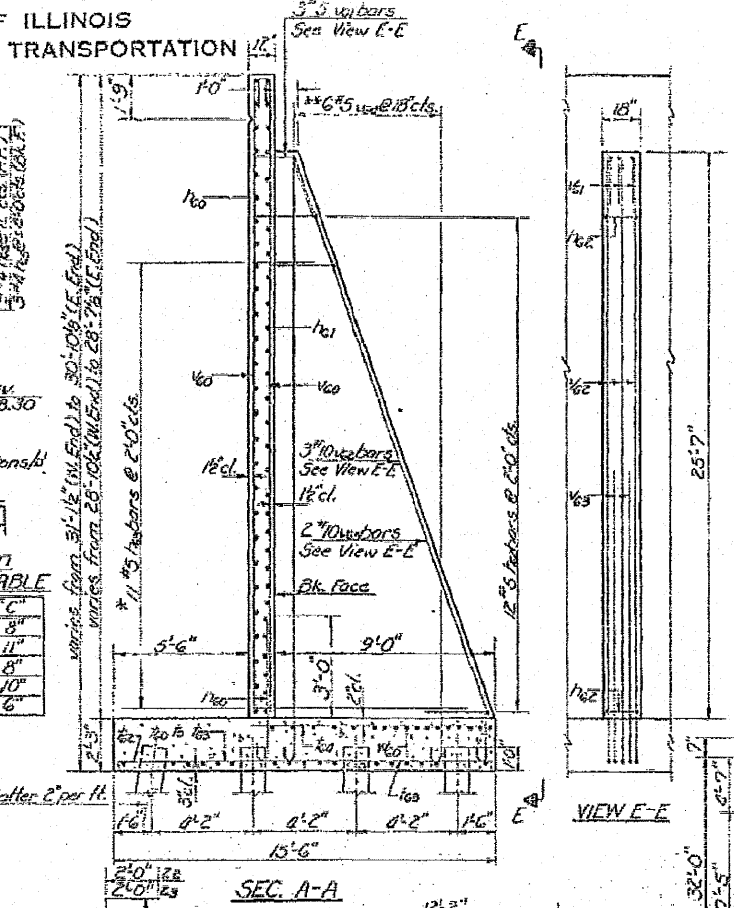
STATE OF ILLINOIS
DEPARTMENT OF TRANSPORTATION

PROJECT NO.	11265	DATE	10/25/09
SHEET NO.	17	TOTAL SHEETS	20
CONTRACT NO.	45	SECTION	42



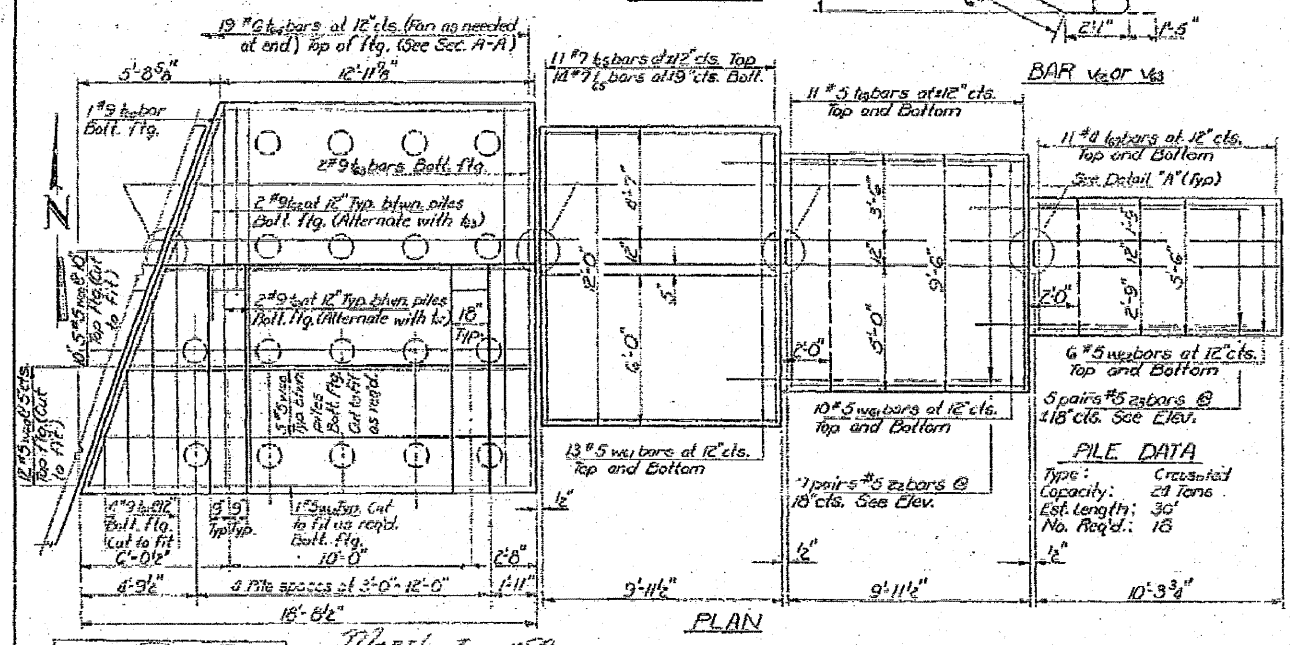
BARS n thru 17

Bar	A	B	C
Dia	6"	5.0"	8"
Dist	8"	6.3"	11"
Dist	6"	3.9"	8"
Dist	7"	6.3"	10"
Dist	8"	3.9"	6"



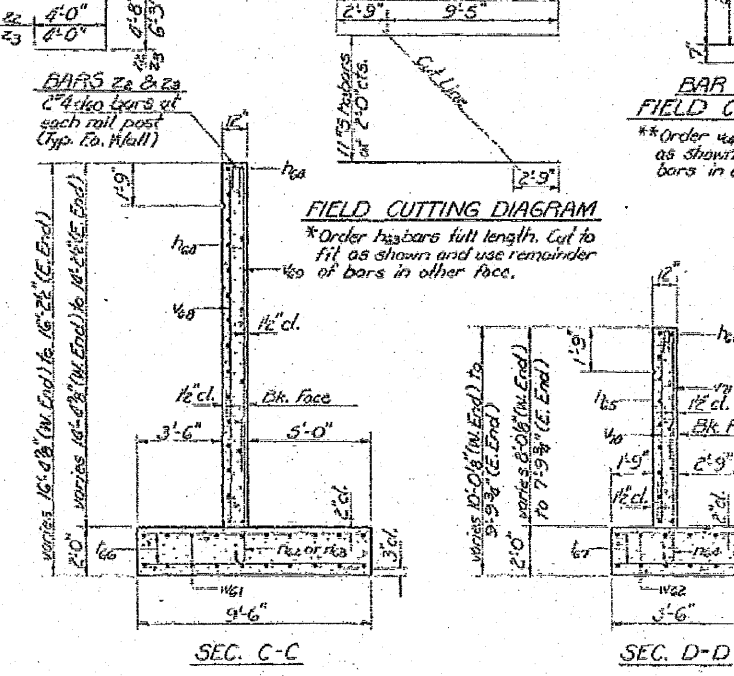
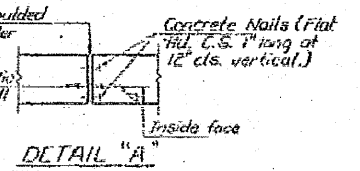
SECTION B-B BILL OF MATERIAL

Bar	No	Size	Length	Splice
clao	20	#4	2'-1"	
thead	23	#4	14'-10"	
thead	32	#5	15'-0"	
thead	24	#5	6'-3"	
thead	22	#5	12'-8"	
thead	27	#4	9'-8"	
thead	12	#4	10'-0"	
thead	15	#6	3'-8"	
thead	21	#8	7'-2"	
thead	10	#6	2'-5"	
thead	11	#7	7'-1"	
thead	21	#4	6'-3"	
thead	1	#9	16'-3"	
thead	4	#9	10'-0"	
thead	3	#9	8'-0"	
thead	10	#9	15'-3"	
thead	19	#6	10'-0"	
thead	25	#7	11'-9"	
thead	28	#5	3'-5"	
thead	30	#3	3'-3"	
thead	24	#5	13'-4"	
thead	6	#5	3'-11"	
thead	6	#10	30'-2"	
thead	4	#10	14'-0"	
thead	12	#5	33'-2"	
thead	11	#6	9'-11"	
thead	11	#5	11'-3"	
thead	12	#4	10'-3"	
thead	4	#8	14'-0"	
thead	11	#5	11'-9"	
thead	4	#4	7'-6"	
thead	11	#5	3'-7"	
thead	34	#5	18'-5"	
thead	40	#5	9'-8"	
thead	12	#5	10'-0"	
thead	12	#5	10'-8"	
thead	10	#5	10'-3"	



PILE DATA

Type: Cross-hatched
Capacity: 24 Tons
Est. Length: 36'
No. Req'd: 18



BAR n DETAIL AND FIELD CUTTING DIAGRAM
*Order walbars full length. Cut to fit as shown and use remainder of bars in other face.

FIELD CUTTING DIAGRAM
*Order walbars full length. Cut to fit as shown and use remainder of bars in other face.

BAR n

BAR n

BAR n

BAR n

BAR n

BAR n

BAR n

DESIGNED: *[Signature]*
CHECKED: Richard Brunette
DRAWN: Joe Sutherland
CHECKED: R.E.

EXAMINED: *[Signature]*
PAGE NO:
APPROVED: *[Signature]*

NORTH EAST RETAINING WALL
EAP RT. 91 SEC. 19VBR
COLES COUNTY
STATION 30+63.74