

**STATE OF ILLINOIS**  
**DEPARTMENT OF TRANSPORTATION**  
**DIVISION OF HIGHWAYS**  
**PROPOSED**  
**HIGHWAY PLANS**

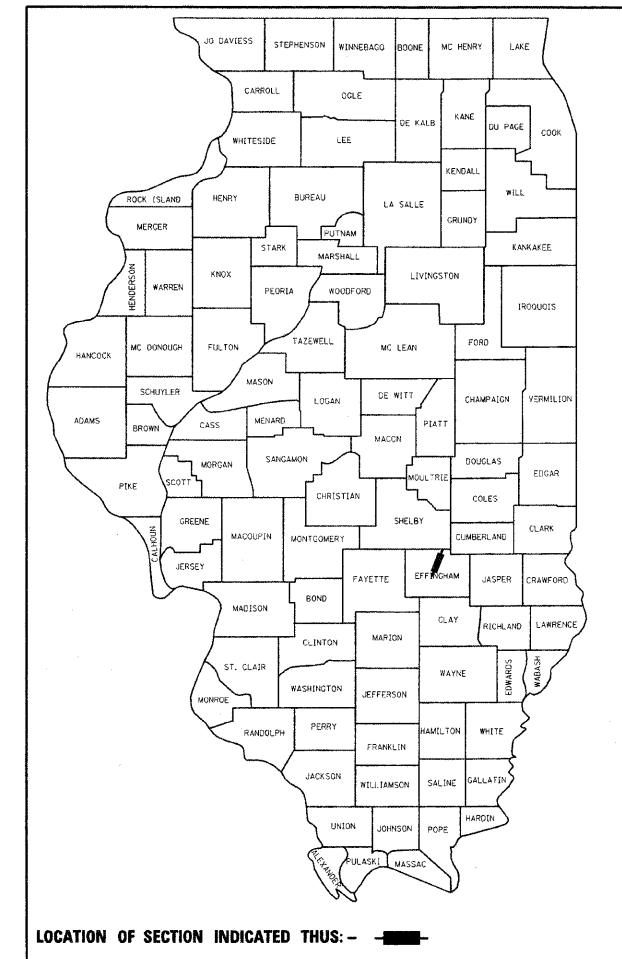
**FAI ROUTE 57**  
**SECTION (25-8)RS**  
**PROJECT: IM-057-4(129)164**  
**INTERSTATE RESURFACING**  
**EFFINGHAM COUNTY**

C-97-083-07

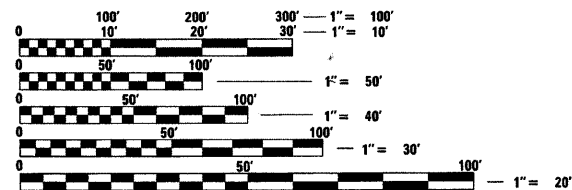
FOR INDEX OF SHEETS, SEE SHEET NO. 2

F.A.I. RTE.	SECTION	COUNTY	TOTAL SHEETS	SHEET NO.
57	(25-8)RS	EFFINGHAM	15	1
FED. ROAD DIST. NO.		ILLINOIS	CONTRACT NO. 74253	

D-97-043-07



2007 ADT = 17,200

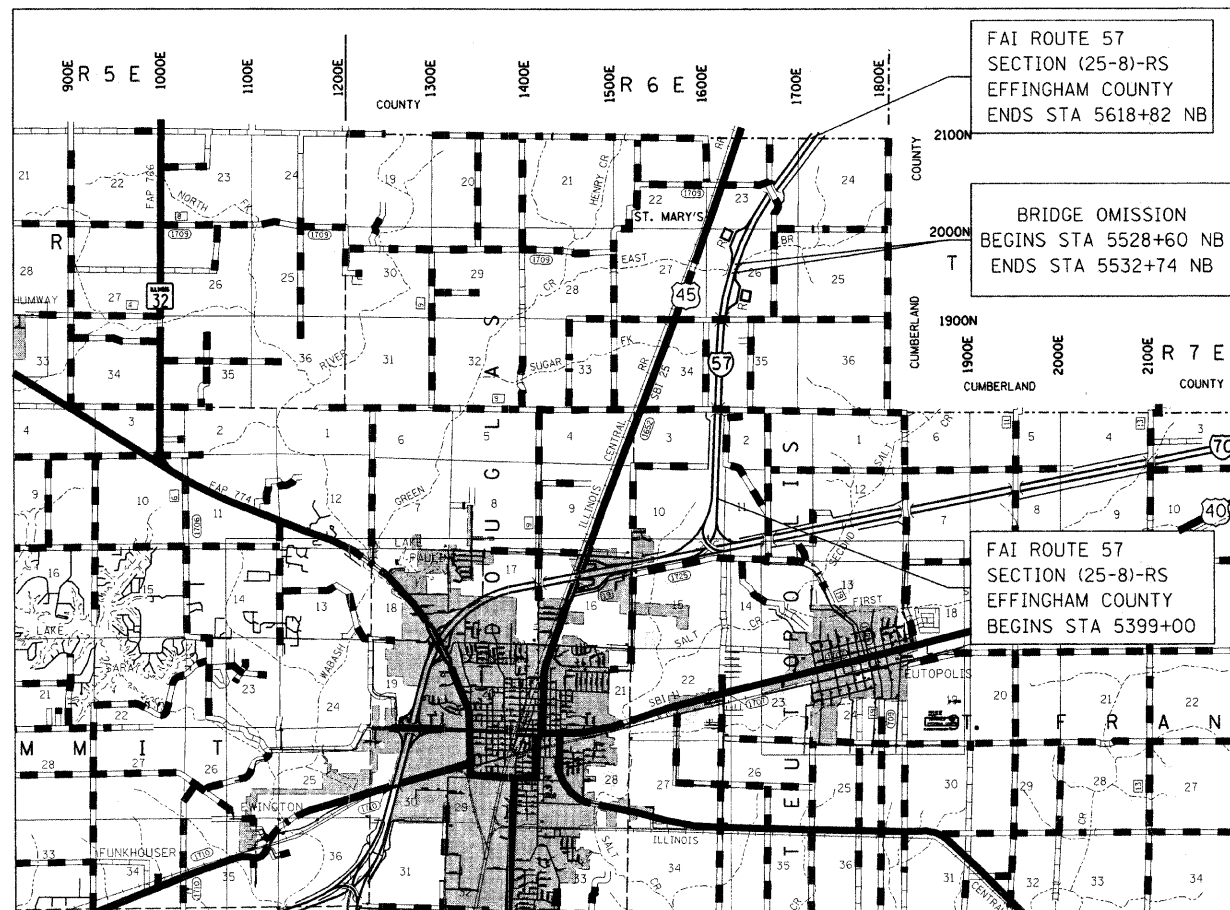


FULL SIZE PLANS HAVE BEEN PREPARED USING STANDARD ENGINEERING SCALES. REDUCED SIZED PLANS WILL NOT CONFORM TO STANDARD SCALES. IN MAKING MEASUREMENTS ON REDUCED PLANS, THE ABOVE SCALES MAY BE USED.

J.U.L.I.E.  
 JOINT UTILITY LOCATION INFORMATION FOR EXCAVATION  
 1-800-892-0123  
 OR 811

PROJECT ENGINEER: MARK DAUGHERTY  
 PROJECT MANAGER: BRIAN LEWIS

CONTRACT NO. 74253



GROSS LENGTH = 22,013 FT. = 4.17 MILE (NORTHBOUND)  
 NET LENGTH = 21,008 FT. = 3.98 MILE (NORTHBOUND)

STATE OF ILLINOIS  
 DEPARTMENT OF TRANSPORTATION  
 DIVISION OF HIGHWAYS

SUBMITTED October 6 2009

*Regina Z. Daskal*  
 DEPUTY DIRECTOR OF HIGHWAYS, REGION ENGINEER

December 4, 2009  
*Charles G. Ingersoll*  
 ENGINEER OF DESIGN AND ENVIRONMENT

December 4, 2009  
*Christine M. Reed*  
 DIRECTOR OF HIGHWAYS, CHIEF ENGINEER

**PRINTED BY THE AUTHORITY  
 OF THE STATE OF ILLINOIS**