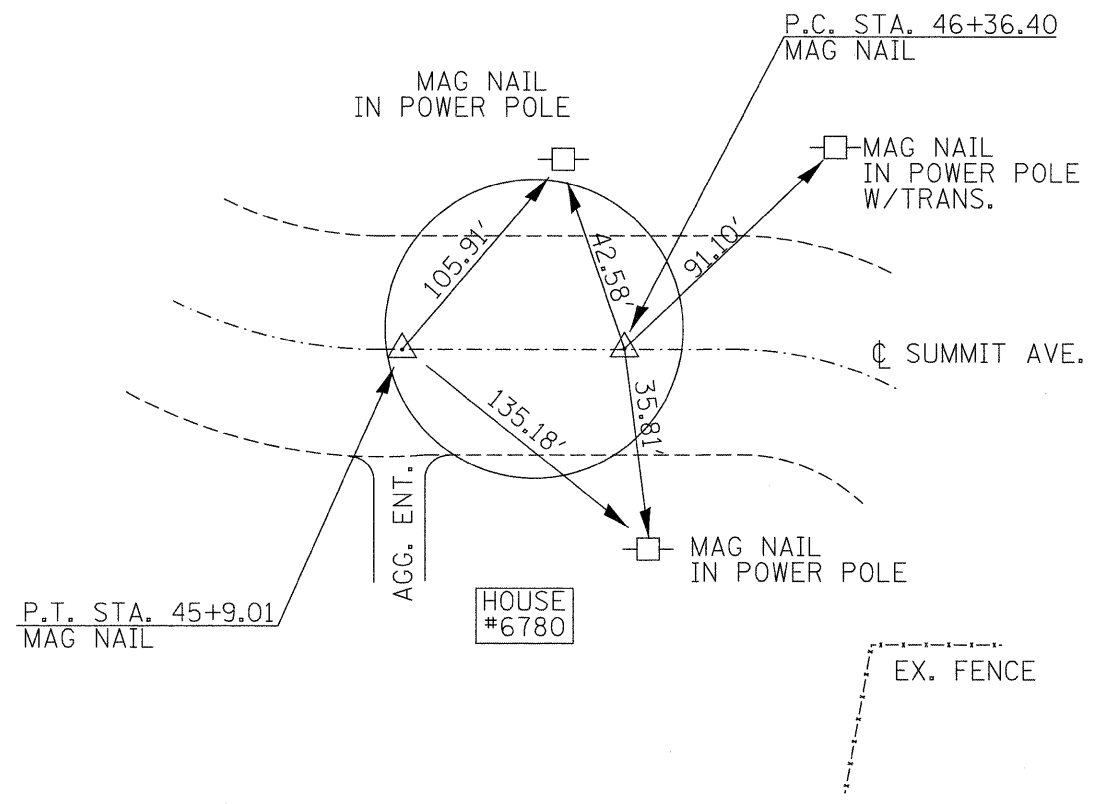
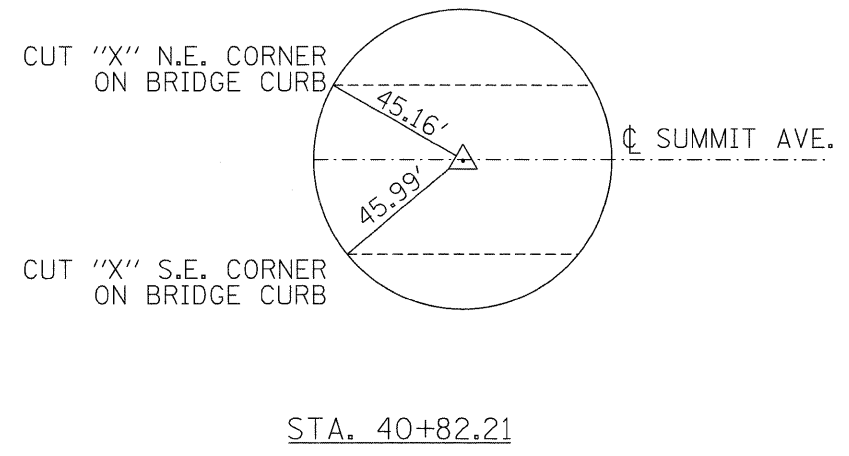


BENCH MARK

CUT SQUARE ON NW CORNER OF VALVE BOX LID @ NW CORNER OF SUMMIT AVE BRIDGE OVER HARDING DITCH (SN 082-0136) STATION 39+46 37' LEFT EL. 422.580



MAG NAIL IS IN THE CENTER OF EACH TIE POINT PULLED

FILE NAME =	USER NAME = maritm	DESIGNED - Designed By	REVISED - Revised By1	STATE OF ILLINOIS DEPARTMENT OF TRANSPORTATION	TIE POINTS AND BENCHMARKS			F.A.J. RTE.	SECTION	COUNTY	TOTAL SHEETS	SHEET NO.
ct:\p\work\PWIDOT\MANN\TM\dms71221\p1n2498a.dgn		DRAWN - Drawn By	REVISED - Revised By2		9181	52BR	ST. CLAIR	41	6			
PLOT SCALE = 50,000' / IN.		CHECKED - Checked By	REVISED - Revised By3		SCALE: Scale			SHEET NO. 1 OF 1 SHEETS STA. TO STA.				
PLOT DATE = 10/7/2009		DATE - Checked Date	REVISED - Revised By4		ILLINOIS FED. AID PROJECT			CONTRACT NO. 76120				