

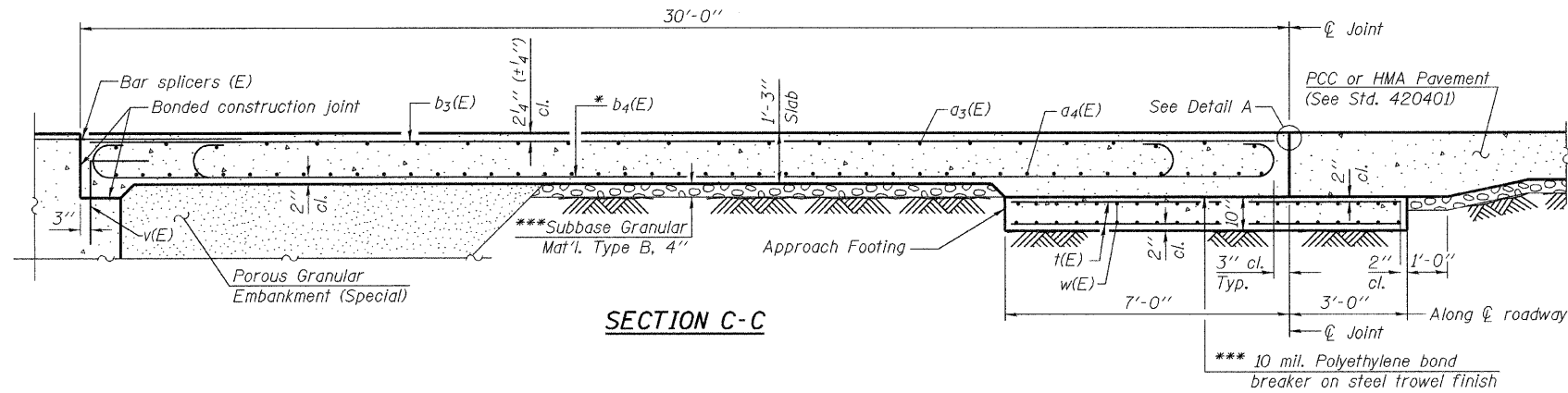
STATE OF ILLINOIS  
DEPARTMENT OF TRANSPORTATION

ROUTE NO.	SECTION	COUNTY	TOTAL SHEETS	SHEET NO.	SHEET NO. 14 25 SHEETS
F.A.U. 9181	52BR	ST. CLAIR	41	30	
FED. ROAD DIST. NO. 7	ILLINOIS	FED. AID PROJECT-			

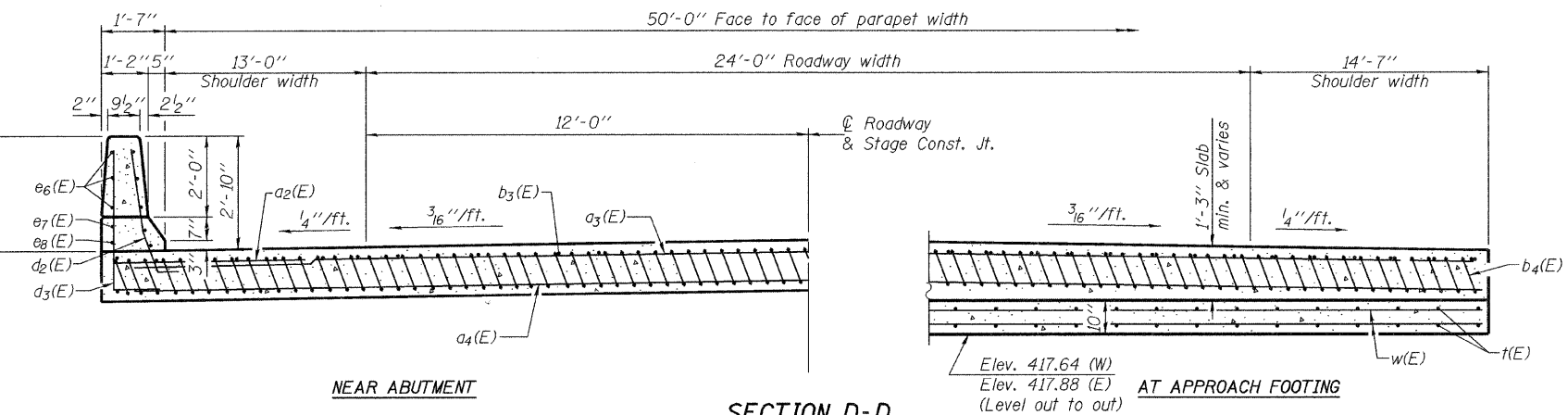
Contract #76120

Notes:

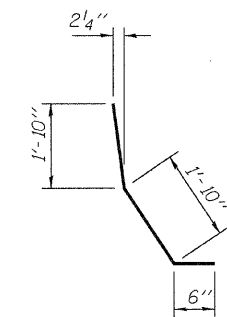
See sheet 13 of 25 for Detail A.  
Approach slab and parapet concrete shall be paid for as Concrete Superstructure.  
Approach footing concrete shall be paid for as Concrete Structures.  
Reinforcement shall be paid for as Reinforcement Bars, Epoxy Coated.  
For v(E) bar details, see sheets 9 and 12 of 25.  
The approach footing maximum applied service bearing pressure (Qmax) = 2.0 ksf.  
For bar splicer details, see sheet 23 of 25.  
Cost of excavation for approach footing included with Concrete Structures.  
For Porous Granular Embankment (Special) and drainage treatment details, see sheet 2 of 25.



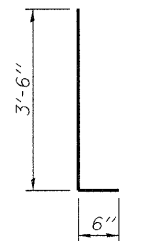
SECTION C-C



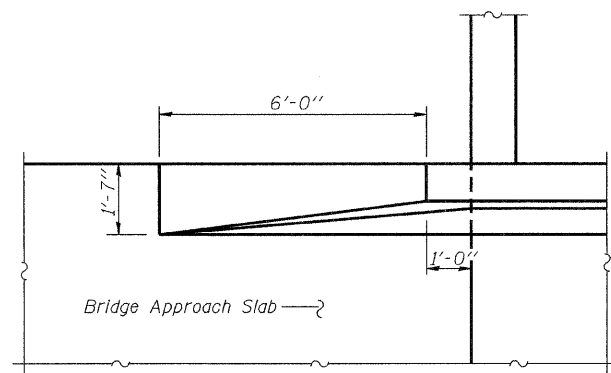
SECTION D-D  
(See Plan for dimensions not shown)



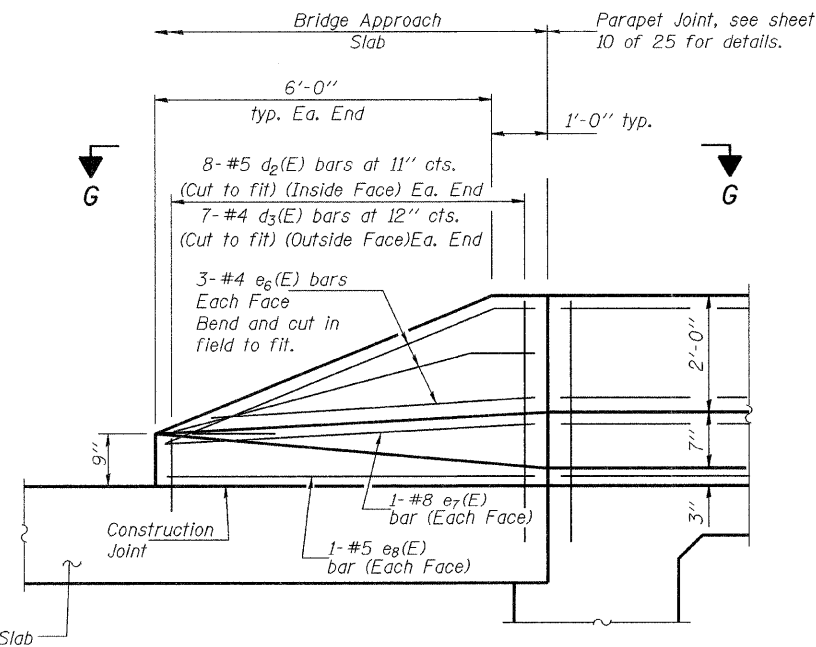
BAR d2(E)



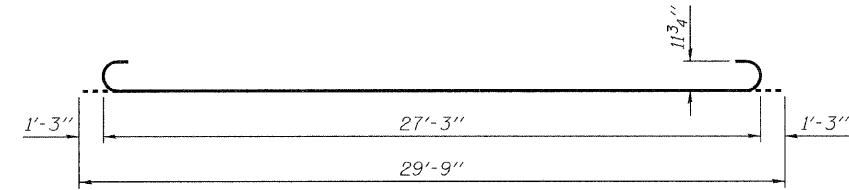
BAR d3(E)



VIEW G-G



VIEW E-E



BAR b4(E)

\* Tilt #9 b4(E) bars as required to maintain clearance.  
\*\*\* Cost included with Concrete Superstructure.

TWO APPROACHES  
BILL OF MATERIAL

Bar	No.	Size	Length	Shape
a2(E)	28	#6	6'-0"	—
a3(E)	120	#4	26'-3"	—
a4(E)	184	#5	26'-3"	—
b3(E)	108	#4	29'-8"	—
b4(E)	252	#9	29'-9"	—
d2(E)	32	#5	4'-2"	┘
d3(E)	28	#4	4'-0"	┘
e6(E)	24	#4	7'-1"	—
e7(E)	8	#8	6'-8"	—
e8(E)	8	#5	6'-8"	—
t(E)	216	#4	9'-8"	—
w(E)	160	#5	26'-3"	—
Concrete Superstructure		Cu. Yd.	167.4	
Concrete Structures		Cu. Yd.	32.2	
Reinforcement Bars, Epoxy Coated		Pound	41,330	

BRIDGE APPROACH SLAB DETAILS  
F.A.U. RTE. 9181 - SECTION 52BR  
ST. CLAIR COUNTY  
STATION 39+89.80  
STRUCTURE NO. 082-0136

DESIGNED	SMR
CHECKED	FT
DRAWN	BML
CHECKED	SMR/FT

November 23, 2009  
EXAMINED *Thomas J. Demagala*  
PASSED *Ralph E. Anderson*  
ENGINEER OF BRIDGES AND STRUCTURES