

FOR INDEX OF SHEETS AND STANDARDS SEE SHEET NO. 2

STATE OF ILLINOIS  
 DEPARTMENT OF TRANSPORTATION  
 DIVISION OF HIGHWAYS  
**PROPOSED  
 HIGHWAY PLANS**  
 F.A.P. ROUTE 998  
 SECTION 82-11  
 TRI-LEVEL CONNECTION

ST. CLAIR COUNTY  
 C-98-075-09

F.A.P. RTE.	SECTION	COUNTY	TOTAL SHEETS	SHEET NO.
998	82-11	ST. CLAIR	13	1

76C46

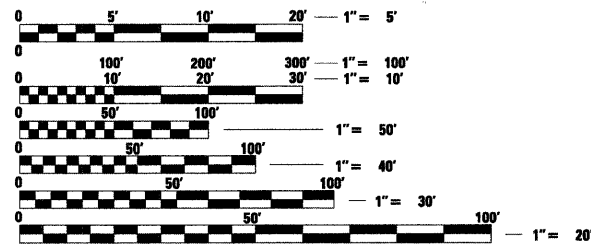
*Victor A. Modeer*  
 VICTOR A. MODEER  
 LICENSE EXPIRES 11/30/2009



NPDES PERMIT INFORMATION	
Approximate Location of Project is:	
Longitude	-90.0848
Latitude	38.3806



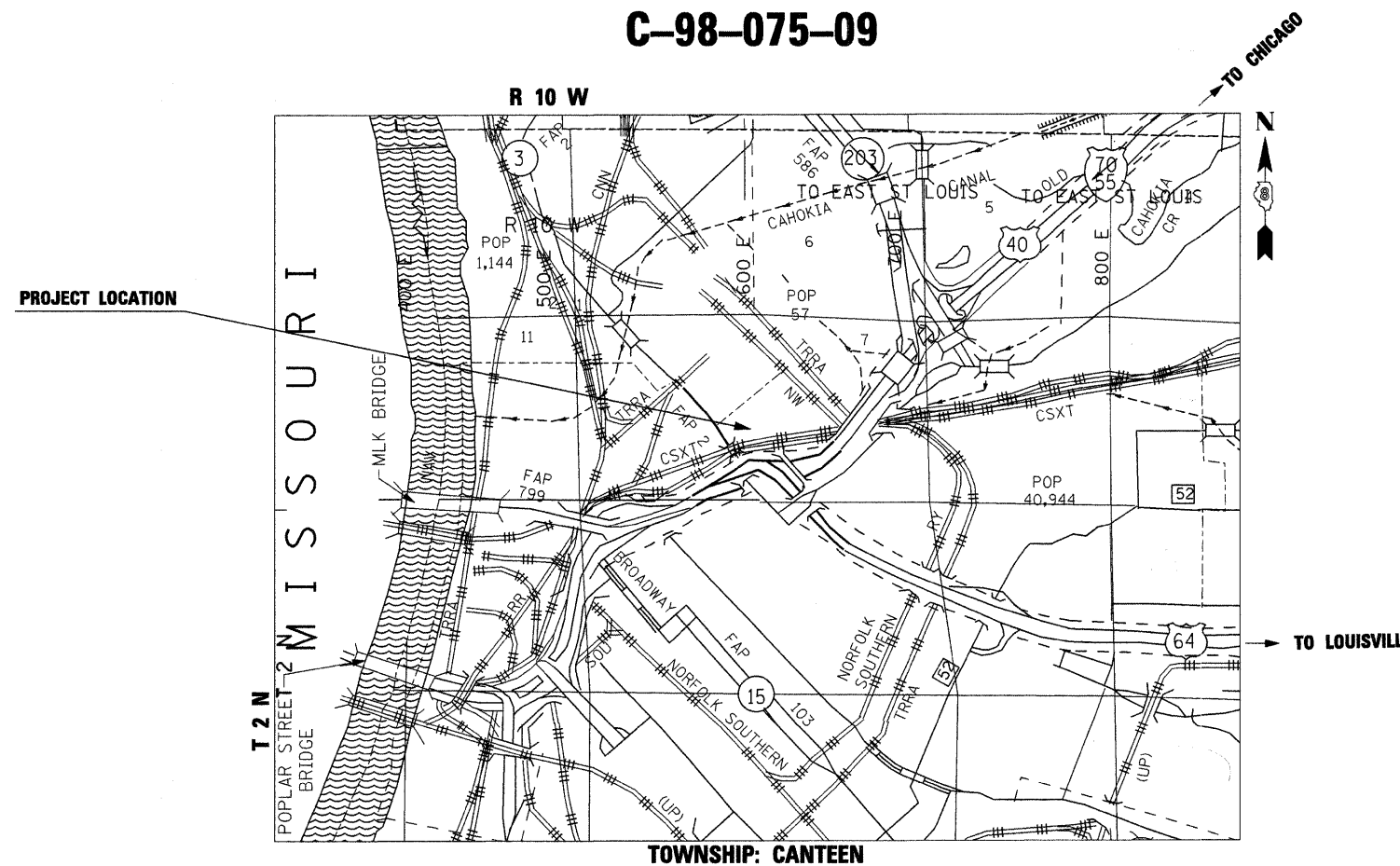
MICROFILMED \_\_\_\_\_  
 REEL NUMBER \_\_\_\_\_  
 AWARDED \_\_\_\_\_  
 RESIDENT ENGINEER \_\_\_\_\_  
 AS BUILT CHANGES WERE MADE  
 ON THE FOLLOWING SHEETS



FULL SIZE PLANS HAVE BEEN PREPARED USING STANDARD ENGINEERING SCALES. REDUCED SIZED PLANS WILL NOT CONFORM TO STANDARD SCALES. IN MAKING MEASUREMENTS ON REDUCED PLANS, THE ABOVE SCALES MAY BE USED.

J.U.L.I.E.  
 JOINT UTILITY LOCATION INFORMATION FOR EXCAVATION  
 1-800-892-0123  
 or 811

PROJECT ENGINEER MIKE PRITCHETT  
 SQUAD LEADER CHAD SANDERS  
 CONTRACT NO. 76C46



STATE OF ILLINOIS  
 DEPARTMENT OF TRANSPORTATION  
 DIVISION OF HIGHWAYS

SUBMITTED Oct 21 20 09  
*Mr. Francis*  
 DEPUTY DIRECTOR OF HIGHWAYS, REGION ENGINEER

December 4, 20 09  
*Charles G. Ingersoll*  
 ENGINEER OF DESIGN AND ENVIRONMENT

December 4, 20 09  
*Christine M. Reed*  
 DIRECTOR OF HIGHWAYS, CHIEF ENGINEER

**PRINTED BY THE AUTHORITY  
 OF THE STATE OF ILLINOIS**

PLANS PREPARED BY:  
 VOLKERT  
 103 LANTER COURT  
 COLLINSVILLE, IL 62234