

F.A.I. RTE.	SECTION	COUNTY	TOTAL SHEETS	SHEET NO.
64	DIST 8 ITS 2010-3	ST. CLAIR	14	1
FED. ROAD DIST. NO.	ILLINOIS	CONTRACT NO. 76C64		

INDEX OF SHEETS

- 1. COVER SHEET
- 2. SUMMARY OF QUANTITIES AND GENERAL NOTES
- 3. DMS/TRUSS CONDUIT AND SERVICE INSTALLATION DETAILS AND CONTROLLER SCHEMATICS
- 4. OVERHEAD SIGN STRUCTURES GENERAL PLAN & ELEVATION-ALUMINUM TRUSS & STEEL SUPPORTS
- 5 & 6. OVERHEAD SIGN STRUCTURES ALUMINUM TRUSS DETAILS FOR TRUSS TYPES I-A, II-A AND III-A
- 7. OVERHEAD SIGN STRUCTURES DAMPING DEVICE
- 8 & 9. OVERHEAD SIGN STRUCTURES SUPPORT FRAME FOR TYPE III-A ALUMINUM TRUSS
- 10 & 11. OVERHEAD SIGN STRUCTURES ALTERNATIVE ALUMINUM WALKWAY DETAILS FOR DMS
- 12. OVERHEAD SIGN STRUCTURES ALTERNATIVE ALUMINUM HANDRAILS DETAILS FOR DMS
- 13. OVERHEAD SIGN STRUCTURES DRILLED SHAFT DETAILS
- 14. SOIL BORING LOG

**STATE OF ILLINOIS
DEPARTMENT OF TRANSPORTATION
DIVISION OF HIGHWAYS**

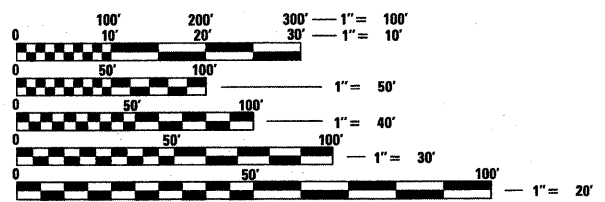
**PROPOSED
HIGHWAY PLANS**

**F.A.I. ROUTE 64
SECTION DIST 8 ITS 2010-3
PROJECT: ACHSIP-064-1(124)001
ST. CLAIR COUNTY
C-98-008-09**

**ITS - DYNAMIC MESSAGE BOARD
WB I-64 NE OF 37TH STREET BRIDGE**

STANDARDS

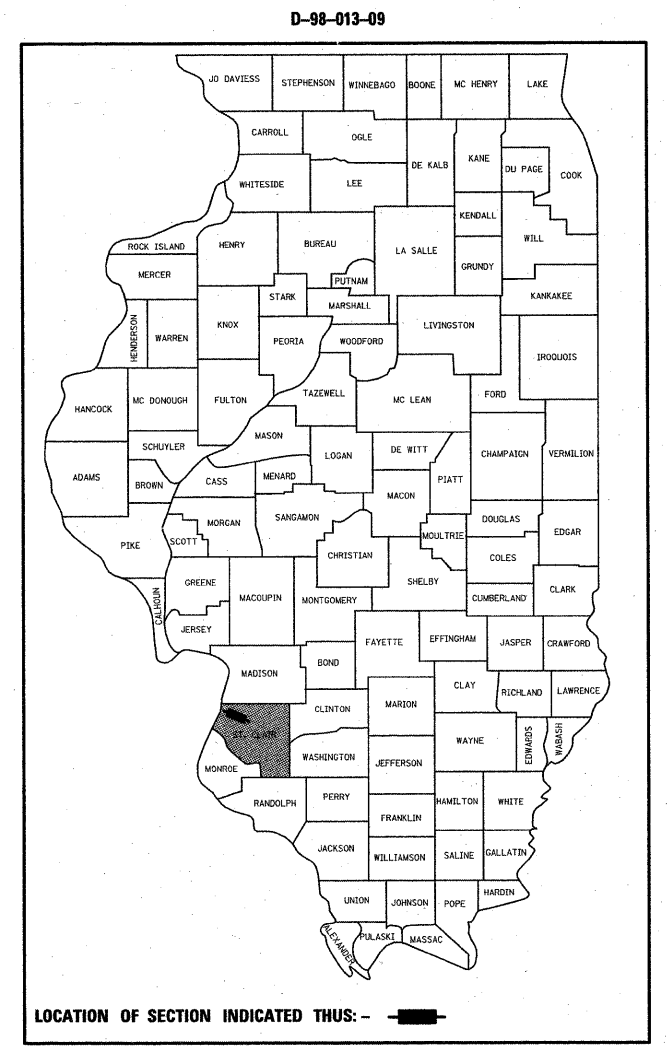
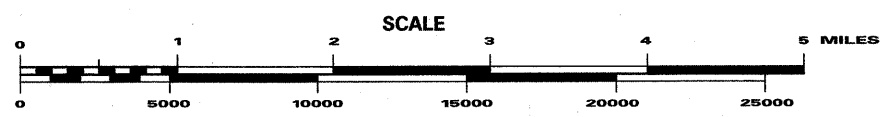
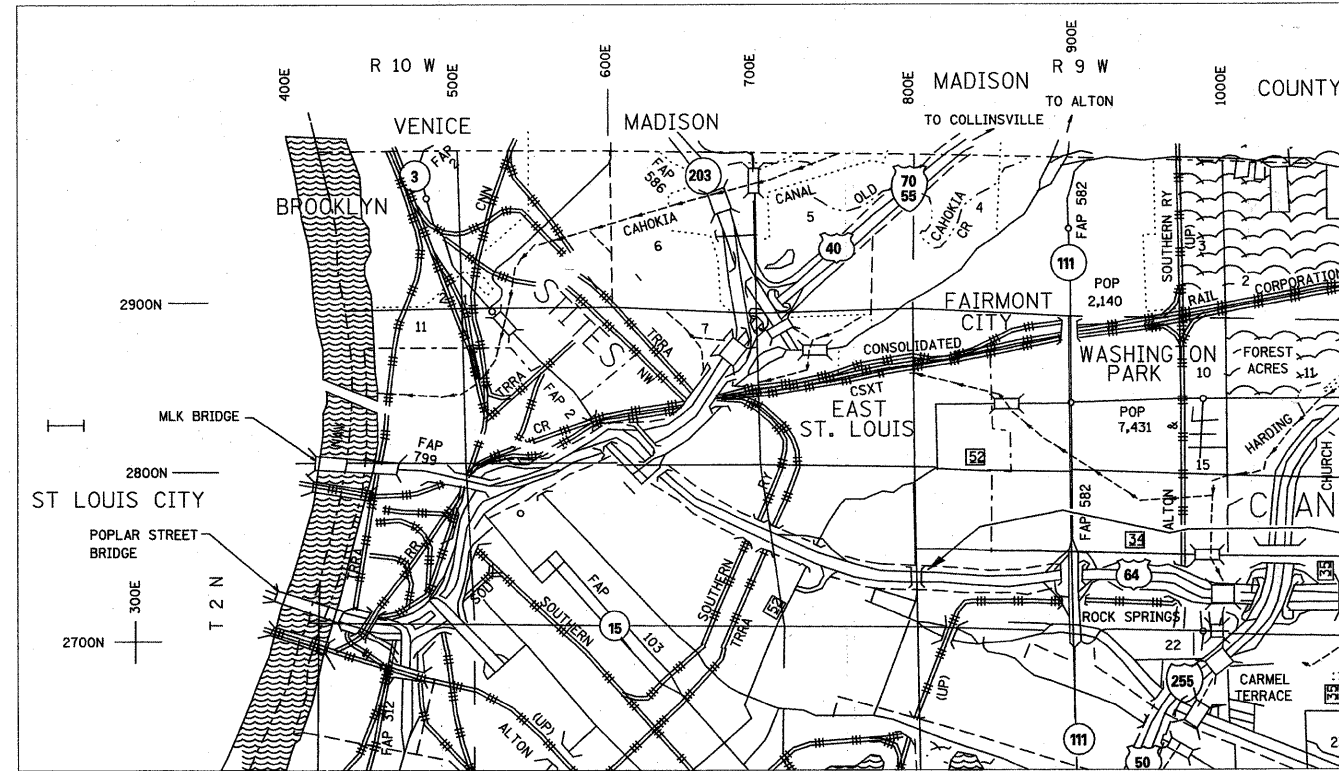
- 000001-05 701001-02 701006-03
- 701101-02 701106-02 701400-04
- 701406-05 701446-01 701901-01
- 878001-08 814006-02



FULL SIZE PLANS HAVE BEEN PREPARED USING STANDARD ENGINEERING SCALES. REDUCED SIZED PLANS WILL NOT CONFORM TO STANDARD SCALES. IN MAKING MEASUREMENTS ON REDUCED PLANS, THE ABOVE SCALES MAY BE USED.

J.U.L.I.E.
JOINT UTILITY LOCATION INFORMATION FOR EXCAVATION
1-800-892-0123
OR 811

**PROJECT ENGINEER: PATTI LEBEAU 618-346-3179
SQUAD LEADER: MICHAEL PRESTON 618-346-3143
LIAISON ENGINEER: JEFF ABEL 618-346-3283
CONTRACT NO. 76C64**



LOCATION OF SECTION INDICATED THIS: - [shaded rectangle]

PROJECT LOCATION
I-64 WB, STA. 161 + 00
006404.8W.7S
EAST SAINT LOUIS TOWNSHIP

**STATE OF ILLINOIS
DEPARTMENT OF TRANSPORTATION
DIVISION OF HIGHWAYS**

SUBMITTED Oct. 14, 2009
Mar. C. Ramie
DEPUTY DIRECTOR OF HIGHWAYS, REGION 5 ENGINEER

December 4, 2009
Charles G. Ingersoll, P.E.
ENGINEER OF DESIGN AND ENVIRONMENT

December 4, 2009
Christina M. Reed, P.E.
DIRECTOR OF HIGHWAYS, CHIEF ENGINEER

**PRINTED BY THE AUTHORITY
OF THE STATE OF ILLINOIS**