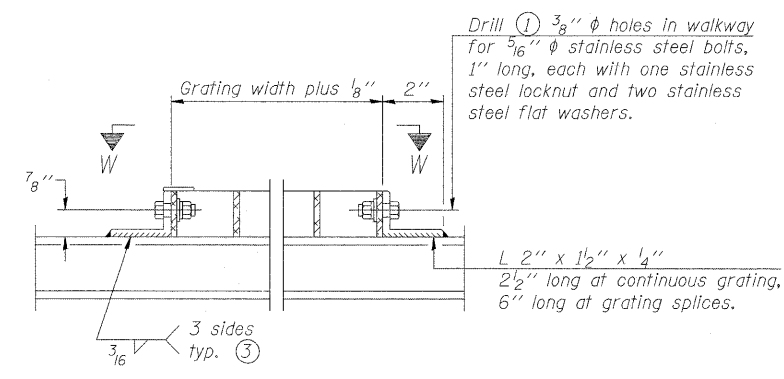


WF6x5.40 behind signs ⑤
 7/16" ϕ holes, typ.
 3/8" ϕ Stainless steel u-bolts.
 Provide 2 stainless steel washers and 2 hexagon locknuts per bolt. (4 bolts required per walkway bracket).
 Truss and sign

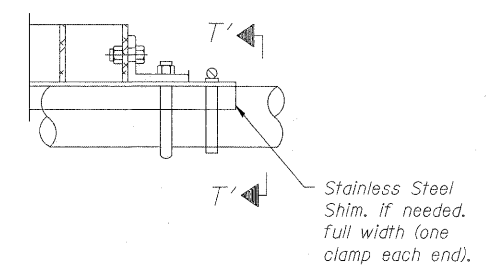
Dynamic Message Sign Cabinet
 Place symmetrical about ϕ truss

Handrail
 See Base Sheet OS-S-11-DMS.

* Bracket and grating dimensions are nominal and will vary based on actual DMS cabinet dimensions plus manufacturer's mounting devices.

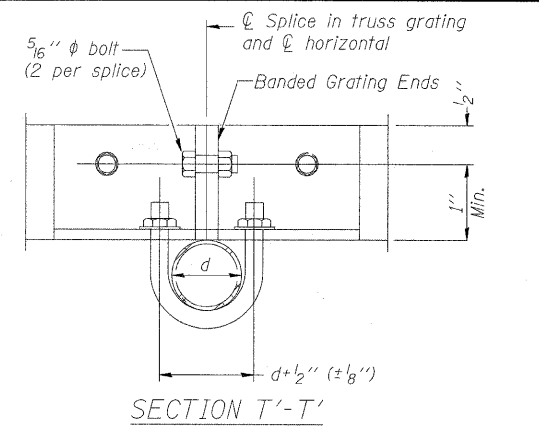


DETAIL W
 (Walkway grating)

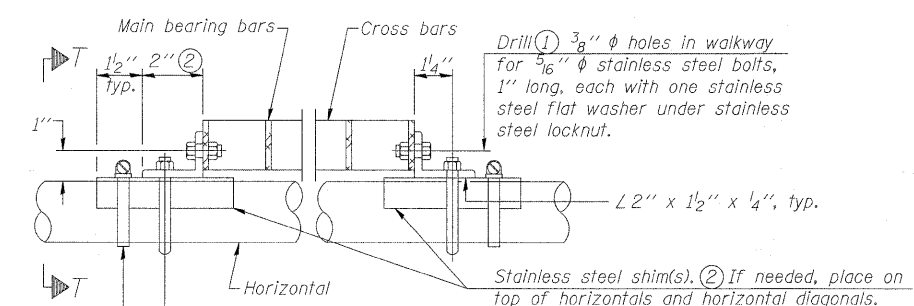


DETAIL T
 (Truss grating splice)

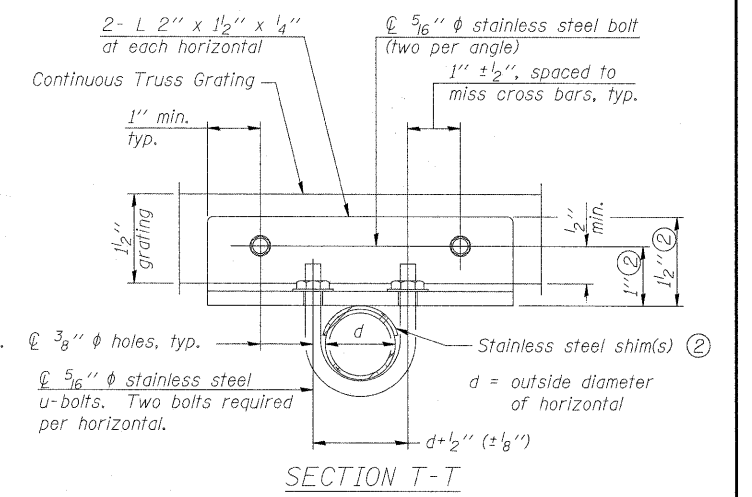
Details not shown same as Detail T. Alternate materials may be used subject to the Engineer's review and approval.



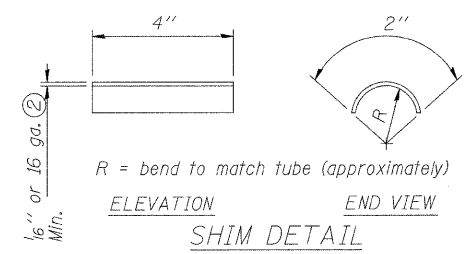
SECTION T'-T'



DETAIL T
 (Continuous Truss grating)

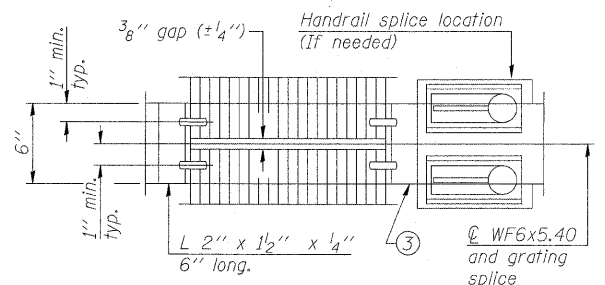


SECTION T-T

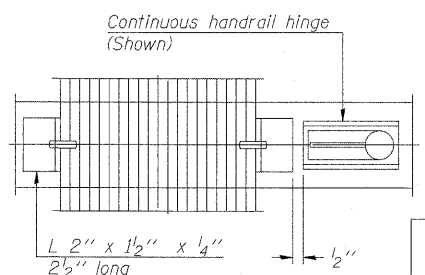


SHIM DETAIL
 R = bend to match tube (approximately)

SECTION B-B

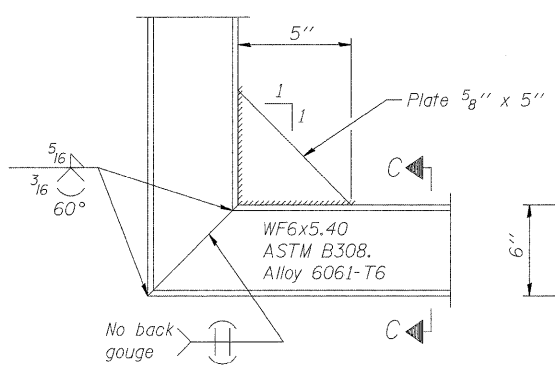


(AT WALKWAY GRATING SPLICE)



(CONTINUOUS WALKWAY GRATING)

SECTION C-C



DETAIL C

SPECIFICATIONS FOR STANDARD ALUMINUM GRATING

Main Bearing Bars shall be 3/16" x 1 1/2" on 1 3/16" centers and conform to ASTM B211 Alloy 6061-T6.
 Cross bars shall be 3/16" x 1 1/2" on 4" centers and conform to ASTM B221 Alloy 6063-T5 or 6061-T6.

OR

Aluminum Grating with modified "T" sections for main bearing bars shall meet the following requirements:

Main bars shall conform to ASTM B221 Alloy 6061-T6 and have a minimum section modulus equal to 0.0705 in. per bar, a depth of 1 1/2", spaced on 1 3/16" centers.
 Cross bars shall conform to ASTM B221 Alloy 6063-T5 or T-42 and spaced on 4" centers.

Structure Number	Station	A	⑥ B	C	⑥ D
850821064L004.9	161+00	7.5"	1' 8"	7'	9' 8"

NUMBER	REVISION	DATE

- Drilling holes in grating may be done in shop or field, based on Contractor's preference and subject to accurate alignment.
- Stainless steel shims shall be placed as shown in Detail T if needed to compensate for alignment variations between horizontal and diagonal pipes beyond adjustment provided by angles. Thicker shims may be used subject to shims performing properly.
- If Handrail Joint present, weld angle to WF(A-N)4 and 1/4" extension bars. (See Base Sheet OS-A-11.)
- 1/8" x 1/2" x 2" welded to handrail posts to protect locations that contact grating.
- Cabinet manufacturer must design and supply hardware for connection of cabinet to WF6's. Bolts must be stainless steel or hot dip galvanized high strength per IDOT specifications.
- Based on actual height of tallest sign given on OS-A-1.

OVERHEAD SIGN STRUCTURES
 ALTERNATE ALUMINUM WALKWAY DETAILS
 FOR DMS

OS-A-10-DMS 6-1-09