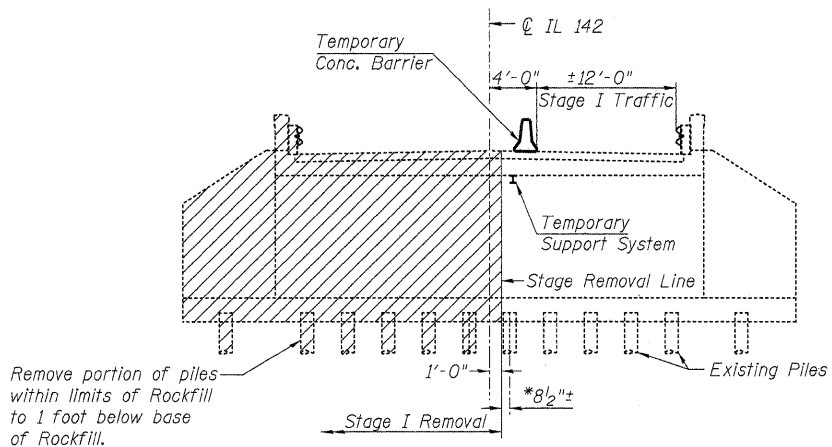
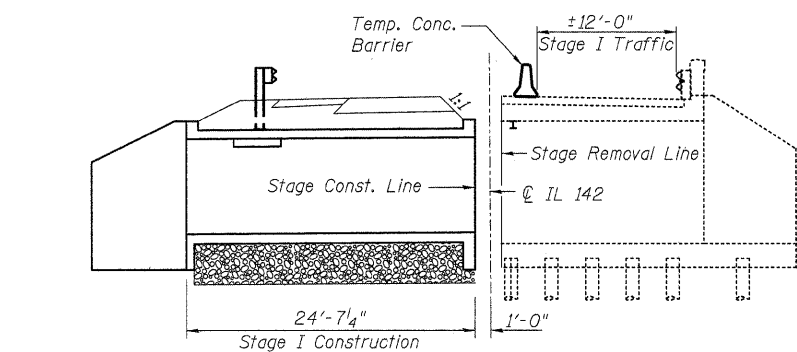


STATE OF ILLINOIS
DEPARTMENT OF TRANSPORTATION

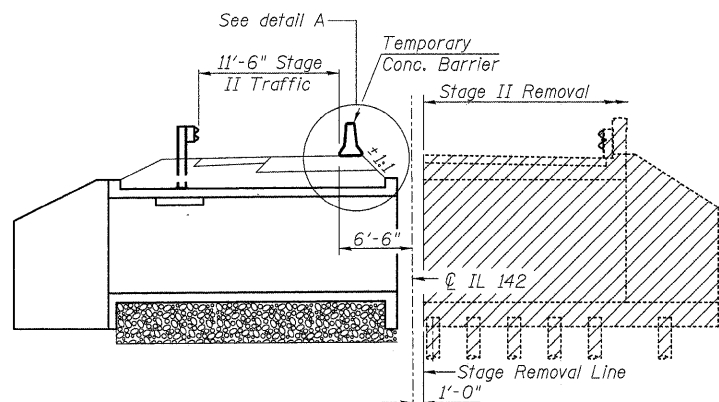
*Contractor shall take precaution during removal so as not to expose the existing pile.



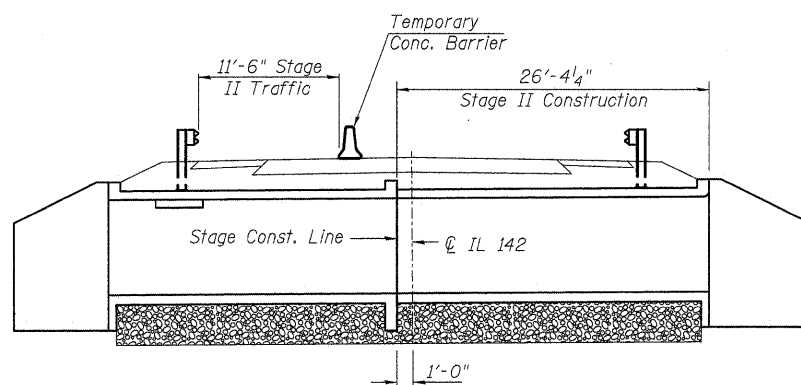
STAGE I REMOVAL



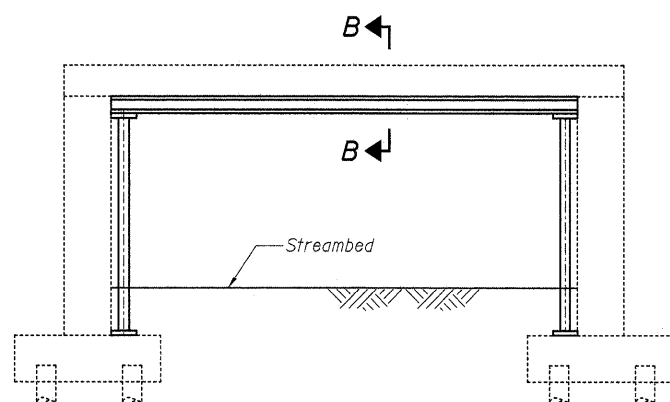
STAGE I CONSTRUCTION



STAGE II REMOVAL

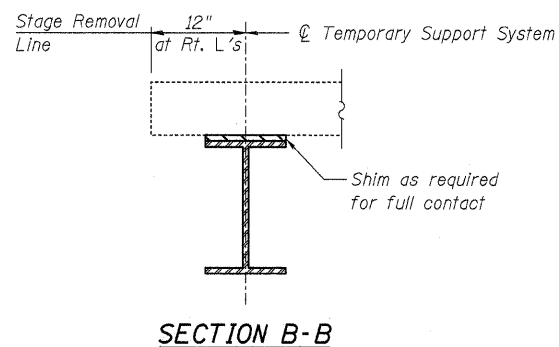


STAGE II CONSTRUCTION

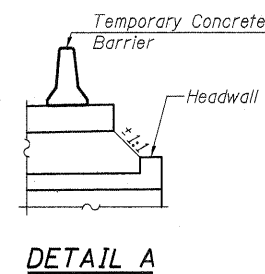


TEMPORARY SUPPORT SYSTEM

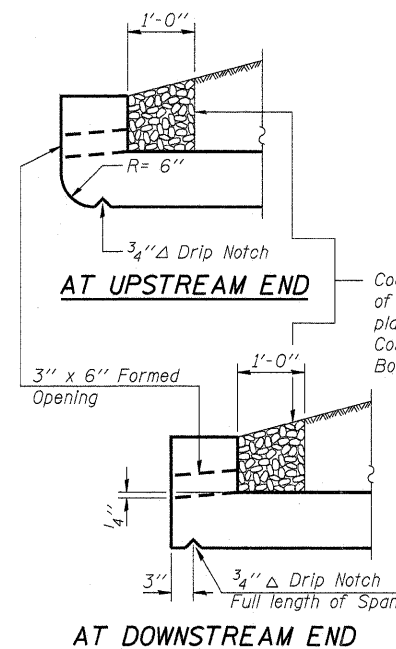
- Notes:
1. Place Temporary Support prior to Stage I Removal
 2. Place Temporary Support along skew.
 3. Temporary Support System shall not be painted.



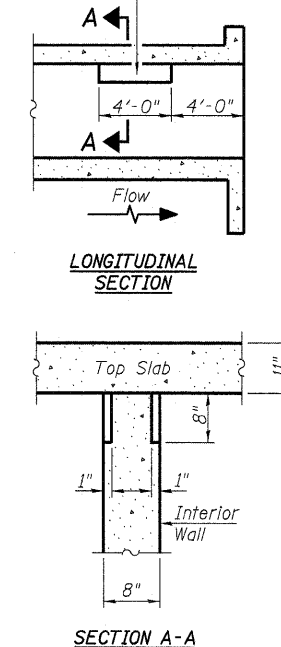
SECTION B-B



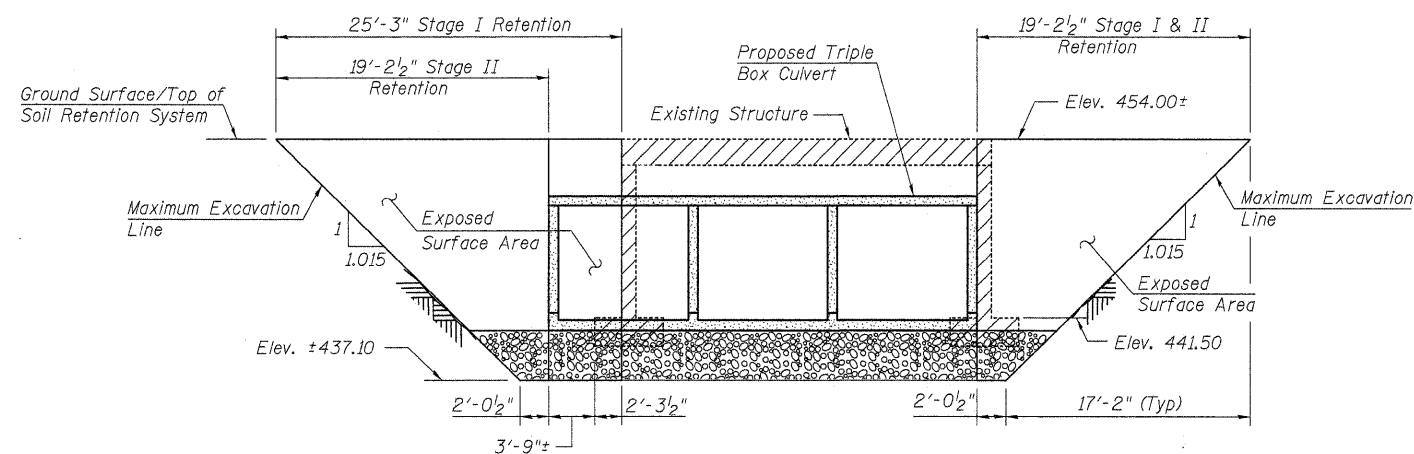
DETAIL A



DRAIN DETAIL



**PHOEBE NESTING
SITE DETAILS
(Downstream End Only)**



TEMPORARY SOIL RETENTION SYSTEM

(Looking South) (Dimensions along Stage Construction Line)

A cantilevered sheet piling design does not appear feasible and additional members or other retention systems may be necessary. The Contractor shall submit a temporary soil retention system design including plan details and calculations for review and acceptance by the Engineer.

- Notes:
1. Hatched area indicates Removal of Existing Structures.
 2. All staging cross sections are looking east.
 3. All dimensions are perpendicular to \bar{C} Roadway unless noted otherwise.
 4. For details of Temporary Concrete Barrier, see Sheet 5 of 6.
 5. For quantity of Temporary Concrete Barrier, see Roadway Plans.
 6. Portions of existing abutments and wingwalls not interfering with new construction shall be removed per Standard Specifications.
 7. The Contractor shall brace the Rock Fill if required during excavation for stage II construction. Cost Included with Rock Fill-Foundation.

**STAGE CONSTRUCTION DETAILS
STRUCTURE NO. 041-2017**

LIN ENGINEERING, LTD. Consulting Engineers Chatham, Illinois Designed By: TBP Checked By: JPH Date: 2/2022 File: 041-2017.dgn	SHEET NO. 2	F.A.P. RTE.	SECTION	COUNTY	TOTAL SHEETS	SHEET NO.
	6 SHEETS	849	113-B	JEFFERSON	24	15
		FED. ROAD DIST. NO.		ILLINOIS FED. AID PROJECT		
		CONTRACT NO. 78085				