

PAVEMENT MARKING NOTES:

CROSSWALKS
THERMOPLASTIC PAVEMENT MARKING - LINE 6", WHITE FOR SIDES
THERMOPLASTIC PAVEMENT MARKING - LINE 12", WHITE FOR BARS

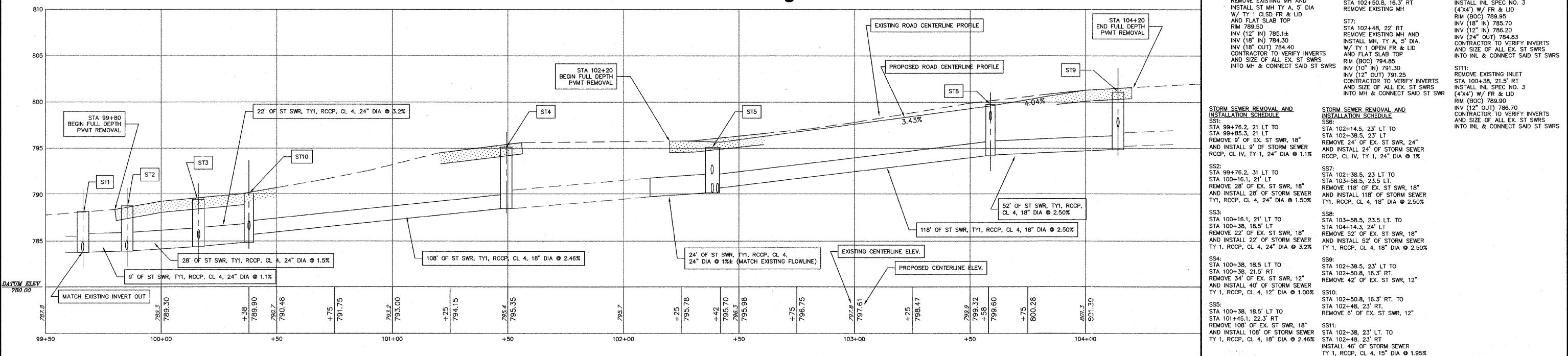
STOP BARS
THERMOPLASTIC PAVEMENT MARKING - LINE 24", WHITE

PARKING STALLS
THERMOPLASTIC PAVEMENT MARKINGS - LINE 4", WHITE

CENTERLINE
THERMOPLASTIC PAVEMENT MARKING - LINE 4", DBL YELLOW

RAILROAD CROSSING
THERMOPLASTIC PAVEMENT MARKING - LETTERS AND SYMBOLS, WHITE

Washington St



REV	DESCRIPTION	DATE	APPROVED