

INDEX OF SHEETS

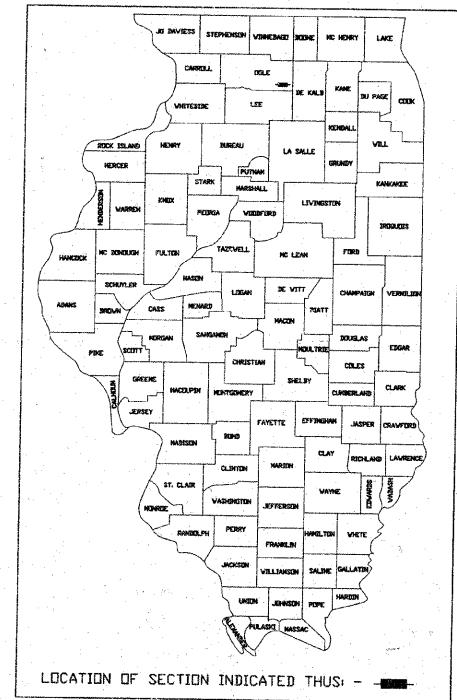
DESCRIPTION	SHEET NO
Title Sheet	1
General Note, Summary of Quantities, Typical	2
Washington St - 1st Av. to UPRR	3
Washington St/Lincoln Hwy - UPRR to 4th Av.	4
Lincoln Hwy - 4th Av to 5th Av	5
4th Av. - 6th St. to Main St.	6
Cross Sections	7
Details	8
Details	9
Traffic Control - Detour Route	10

STANDARDS

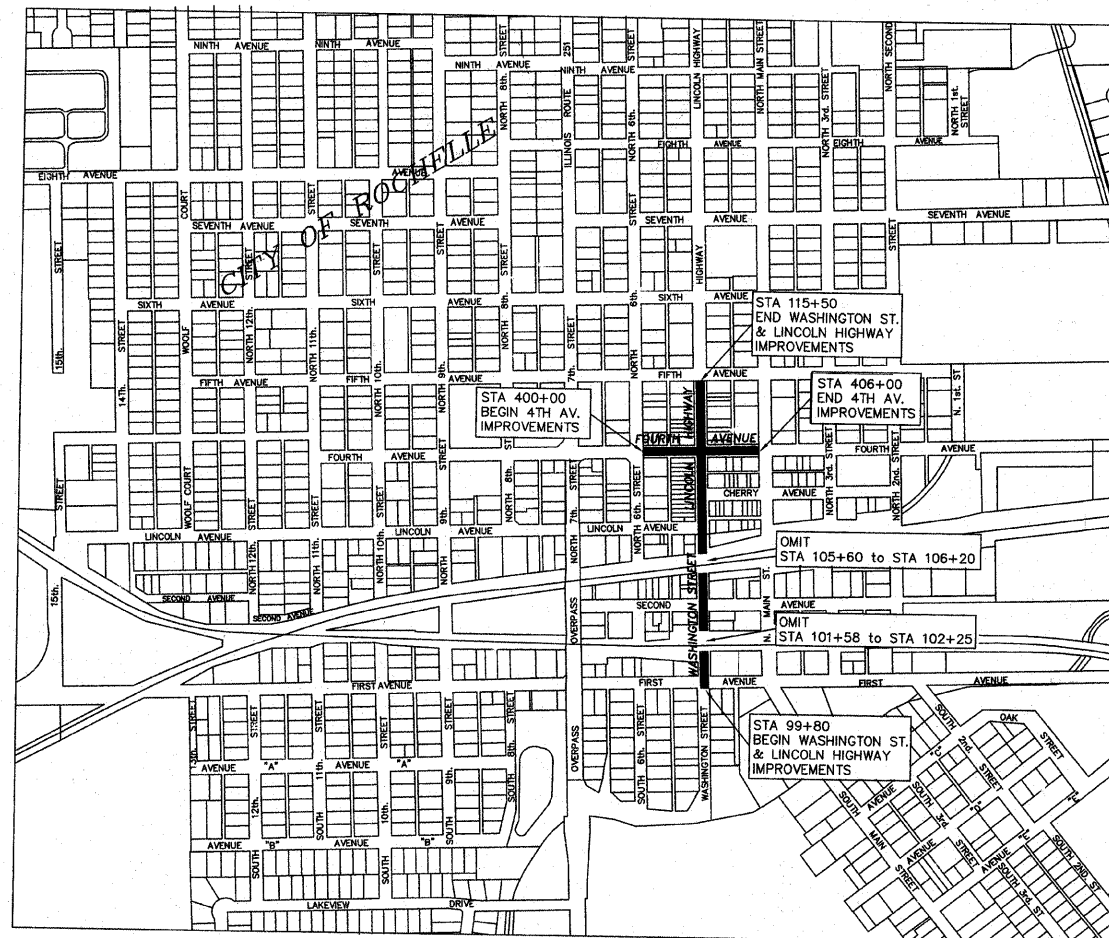
NUMBER	TITLE
280001-05	Temporary Erosion Control Systems
602401-02	Manhole, Type A
602601-02	Precast Reinforced Concrete Flat Slab Top
602701-02	Manhole Steps
604001-03	Frame and Lids, Type 1
606001-04	Concrete Curb Type B and Combination Concrete Curb and Gutter
701006-03	Off-Rd Operations, 2L, 2W, 15' (4.5m) to 24" (600mm) From Pavement Edge
701011-02	Off-Rd Moving Operations 2L, 2W, Day Only
701301-03	Lane Closure, 2L, 2W Short Time Operations
701501-05	Urban Lane Closure 2L, 2W, Undivided
701801-04	Lane Closure Multilane 1W or 2W Crosswalk or Sidewalk Closure
701901-01	Traffic Control Devices
720011-01	Metal Post for Signs, Markers & Delineators
728001-01	Telescoping Steel Sign Support
729001-01	Applications of Types A & B Metal Post (For Signs & Markers)
780001-02	Typical Pavement Markings

STATE OF ILLINOIS
DEPARTMENT OF TRANSPORTATION
DIVISION OF HIGHWAYS
PLANS FOR PROPOSED
AMERICAN RECOVERY REINVESTMENT ACT
FEDERAL AND LOCAL FUNDING
STREET REHABILITATION/RESURFACING PROJECT
FAU 5455 (LINCOLN HWY/WASHINGTON ST) - 1st Ave to 5th Ave/
FAU 5445 (4th Avenue) - 6th St to Main St
SECTION: 09-00105-00-RS
PROJECT: ARA - 5061(013)
JOB NO: C-92-187-09
CITY OF ROCHELLE
OGLE COUNTY
CONTRACT NO: 85490

Route No.	Section	County	Total Sheets	Sheet No.
5455/5445	09-00105-00-RS	OGLE	10	1
Illinois Project: 5061(013)				
Contract No: 85490				



PRINTED BY AUTHORITY OF THE STATE OF ILLINOIS

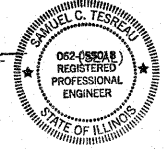


Location Map
Not to Scale

Gross Length of Improvements = 2164 Feet or 0.41 Miles
 Net Length of Improvements = 2059 Feet or 0.39 Miles

I, SAMUEL C. TESREAU, A FULLY REGISTERED PROFESSIONAL ENGINEER UNDER THE LAWS OF THE STATE OF ILLINOIS, HEREBY CERTIFY THAT THIS PLAN, SPECIFICATION OR REPORT WAS PREPARED BY MYSELF OR UNDER MY DIRECT SUPERVISION

Signed: *Samuel C. Tesreau*
 SAMUEL C. TESREAU, P.E.
 CITY ENGINEER
 LICENSE EXPIRES 11/30/2009



Date: 11/1/2009

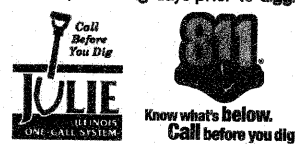
AGENCY RESPONSIBLE FOR LETTING

Approved: 11-3-2009
Ken Altman
 City Manager, City of Rochelle

Passed: NOV 6 2009 2009
George F. Gunn
 District 2 Engineer of Local Roads

Released for Bid Based on Limited Review: NOV 6 2009 2009
George F. Gunn
 Deputy Director of Highways Region 2 Engineer

CALL BEFORE YOU DIG
 CALL 811 or 1-800-892-0123
 48 hours/2 working days prior to digging.



LINCOLN HIGHWAY/WASHINGTON STREET:
 ADT = 4800 (2009) <1% TRUCKS
 URBAN MINOR ARTERIAL

4TH AVENUE:
 ADT = 2600 (2009) <1% TRUCKS
 COLLECTOR

City of Rochelle
Engineering Division
 417 N. 6th St. Rochelle, IL 61068

PROJECT ENGINEER: SAM TESREAU, (815) 561-2023
 FIELD TECHNICIAN: CURT WARD, (815) 561-2025

GENERAL NOTES:

Specifications for this project shall be IDOT " Standard Specifications for Road and Bridge Construction", latest edition, IDOT "Recurring Special Provisions", latest edition, and City of Rochelle Special Provisions unless otherwise approved by the Engineer. All reference to "Engineer" shall mean the City Engineer or his authorized representative.

Any construction or work indicated in the plans or specified in the proposal shall be completed by the Contractor. Any construction or work not included in a pay item shall be incidental to the project contract cost. quantities shown are estimates and for information only. The contractor shall verify all quantities.

Contractor shall be required to file a Notice of Intent with the I.E.P.A. for N.P.D.E.S. storm water regulations as well as the S.W.P.P.P. Notice of Termination shall be filed once the project has been accepted by the City Engineer. Cost and fees associated with this item shall be considered incidental to the contract.

Call J.U.L.I.E. (1-800-892-0123) for utility location information prior to excavation. The location for existing utilities as shown on the plans are based on best information available, but not guaranteed. It shall be the Contractor's responsibility to ascertain their exact location from the utility companies and by field inspection. The contractor shall verify all underground utility locations in the field. The Contractor shall be responsible for "potholing" or locating utilities both vertical and horizontal, within the project limits or along any sewer trench, before installation of any proposed improvements to determine if conflicts exist with said improvements. The contractor shall be responsible for contacting the utility company for any adjustments. This item shall be considered incidental to the contract.

Protect all overhead and underground utility lines during construction. All Electric, Water, Sanitary Sewer, and Storm Sewer adjustments and/or relocations will be performed by the City of Rochelle unless otherwise directed by the Engineer.

Right-of-way line and property lines indicated on the plans are approximate. The contractor shall carefully preserve all existing property markers until an authorized surveyor has referenced their location. Property markers damaged by the contractor shall be replaced at the expense of the contractor. All property corner monumentation shall be restored to the condition existing before construction began.

Top of curb elevations indicated on the plans are to the top back of curb.

EARTHWORK, TRENCHBACKFILL, SUBGRADE AND PAVEMENT PREPARATION NOTES:

All excess earth excavation or unsuitable material shall be disposed of by the contractor off-site. This item shall be considered incidental to applicable pay items.

The upper 12 inches of subgrade below pavements, or new fills shall be brought to within ±2% of optimum moisture and compacted to not less than 90% of maximum density. Optimum moisture is estimated to be in the range of 8% to 9% during cool or wet seasons, therefore it may be necessary to disk and aerate the existing upper 12 inches of soil to achieve optimum moisture content.

No fill or backfill material shall be placed over frozen, muddy, or otherwise unstable material.

All fill or backfill shall be placed beneath exterior paved areas shall be compacted to not less than 90% of maximum density.

All fill and backfill shall be placed in lifts not greater than 8 inches in thickness, loose measurement, prior to compaction.

Areas of soft or unstable sub-base shall be undercut a minimum of 12 inches and aggregate base (CA-2 and IDOT breaker run) placed and compacted to 90% of maximum density.

All density measurements referenced above shall be in accordance with ASTM designation D1557-78 modified proctor method.

Contractor is responsible for maintaining a final grade that is suitable for drainage, seeding and landscaping (minimum of 4" of topsoil). Contractor shall restore all disturbed areas to preconstruction conditions or better.

Contractor shall protect and prevent damage to existing trees which are not indicated on the plans to be removed.

The contractor shall remove existing street signs and post and stockpile them at a safe location to prevent damage and theft. This work shall be considered incidental to the project. The contractor will provide and install new street signs as directed by the engineer.

EROSION AND SEDIMENTATION CONTROL NOTES:

Erosion control practices shall be constructed in accordance with the Standard Specifications, the Standards for Soil Erosion and Sediment Control as contained in IEPA/WPC/ 87-012 or current edition and according to Procedures and Standards for Urban Soil Erosion and Sedimentation Control in Illinois, latest edition, and according to the Standards of the City of Rochelle.

A temporary sediment barrier of straw bales or filter fabric shall be placed around each storm sewer inlet potentially impacted by work. This work shall considered incidental to the project Fabric filter fences or straw bales shall be placed around any stock pile with more than 10 cu. yd. of material. At the end of each work day, the contractor shall sweep or clean (not flush) any construction soil material from the street to prevent tracking.

The Engineer shall determine the adequacy of the contractor's erosion control efforts. The Engineer or his designated representative shall have full authority to suspend or limit the contractor's operations pending adequate performance of erosion control methods.

The contractor shall inspect erosion control structures daily and immediately after any major storm. All mud and debris shall be swept clean from roadways at the end of each working day or as directed by the Engineer. This item shall be considered incidental to the contract.

Refer to the Special Provisions for further requirements of contract pay items.

**SUMMARY OF QUANTITIES
CONSTRUCTION TYPE CODE: I000**

Item Number	Items	Unit	Quantity
20200100	Earth Excavation	CY	108.00
20201200	Removal and Disposal of Unsuitable Material	CY	205.00
20800150	Trenchbackfill	CY	210.00
21101625	Topsoil Furnish and Place, 6"	SY	110.00
xx000880	Seeding, CL 1, Special	SY	110.00
25100630	Erosion Control Blanket	SY	110.00
28000500	Inlet/ Pipe Protection	EA	8.00
28000400	Perimeter Erosion Barrier	FT	220.00
31101000	Subbase Granular Material, Type B	TON	390.00
35101400	Aggregate Base Crse. Type B	TON	1035.00
40603310	Hot-Mix Asphalt Surface Course, MIX "C", N50	TON	1022.00
40603080	Hot-Mix Asphalt Binder Course, IL-19.0, N50	TON	1860.00
40600100	Bituminous Materials (prime coat)	GAL	1295.00
40600300	Aggregate (prime coat)	TON	65.00
42000500	Portland Cement Concrete Pavement, 10"	SY	14.00
42300200	Portland Cement Concrete Driveway Pvrnt, 6"	SY	6.00
42300400	Portland Cement Concrete Driveway Pvrnt, 8"	SY	105.00
42400300	Portland Cement Concrete Sidewalk, 6"	SF	3691.00
42400410	Portland Cement Concrete Sidewalk, 8"	SF	629.00
42400800	Detectable Warnings	SF	123.00
44000100	Pavement Removal	SY	2232.00
44000164	Hot-Mix Asphalt Surface Removal, 3 3/4"	SY	8106.00
44000600	Sidewalk Removal	SF	3236.00
44000200	Driveway Pavement Removal	SY	126.00
44000500	Combination Curb and Gutter Removal	FT	359.00
50800105	Reinforcement Bars	LBS	390.00
55019500	Storm Sewers, Type 1, Reinforced Concrete Culvert, Storm Drain, and Sewer Pipe, CI IV 12"	FT	52.00
55019600	Storm Sewers, Type 1, Reinforced Concrete Culvert, Storm Drain, and Sewer Pipe, CI IV 15"	FT	58.00
55019700	Storm Sewers, Type 1, Reinforced Concrete Culvert, Storm Drain, and Sewer Pipe, CI IV 18"	FT	298.00
55019900	Storm Sewers, Type 1, Reinforced Concrete Culvert, Storm Drain, and Sewer Pipe, CI IV 24"	FT	83.00
55100500	Storm Sewer Removal, 12"	FT	86.00
55100700	Storm Sewer Removal, 15"	FT	18.00
55100900	Storm Sewer Removal, 18"	FT	337.00
55101200	Storm Sewer Removal, 24"	FT	24.00
56109210	Water Valves to be adjusted	EA	5.00
60223100	Manholes, Ty A, Special, 5' diameter, Type 1 Frame, Clsd Lid	EA	6.00
60242700	Inlets Special No. 3	EA	3.00
60242800	Inlets Special No. 4	EA	1.00
60260200	Inlets to be adjusted (Special)	EA	3.00
60255600	Manholes to be adjusted (Special)	EA	3.00
60500040	Removing Inlets	EA	2.00
60500070	Removing Manholes	EA	8.00
60604400	Comb. Concrete Curb & Gutter, Type B-6.18	FT	682.00
67100100	Mobilization	LS	1.00
70101700	Traffic Control and Protection	LS	1.00
70300100	Short Term Pavement Marking	FT	1405.00
* 78000100	Thermoplastic Pavement Marking - Letters and Symbols	SF	272.00
* 78000200	Thermoplastic Pavement Marking - Line 4"	FT	3745.00
* 78000400	Thermoplastic Pavement Marking - Line 6"	FT	1362.00
* 78000600	Thermoplastic Pavement Marking - Line 12"	FT	1335.00
* 78000650	Thermoplastic Pavement Marking - Line 24"	FT	575.00
20048665	Railroad Liability Insurance	LS	2.00

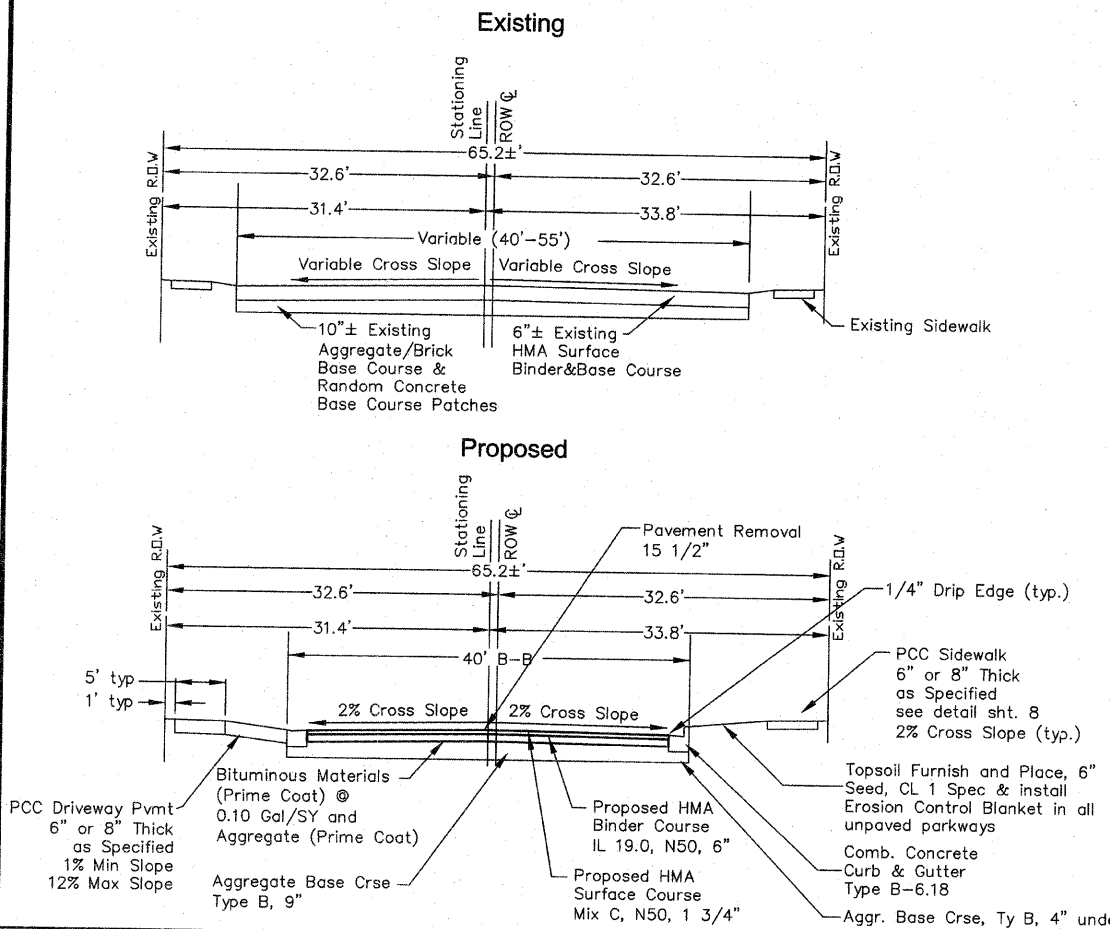
*** SPECIALTY ITEMS**

HMA Chart		
Mixture Uses(s):	Surface	Binder
PG:	PG 64-22	PG 64-22
Design Air Voids	4.0 @ N50	4.0 @ N50
Mixture Composition (Gradation Mixture)	IL 9.5 or 12.5	IL 19.0
Friction Aggregate	C	N/A
20 Year ESAL	0.2	0.2
Mix Unit Weight	112 lbs/sy/in	

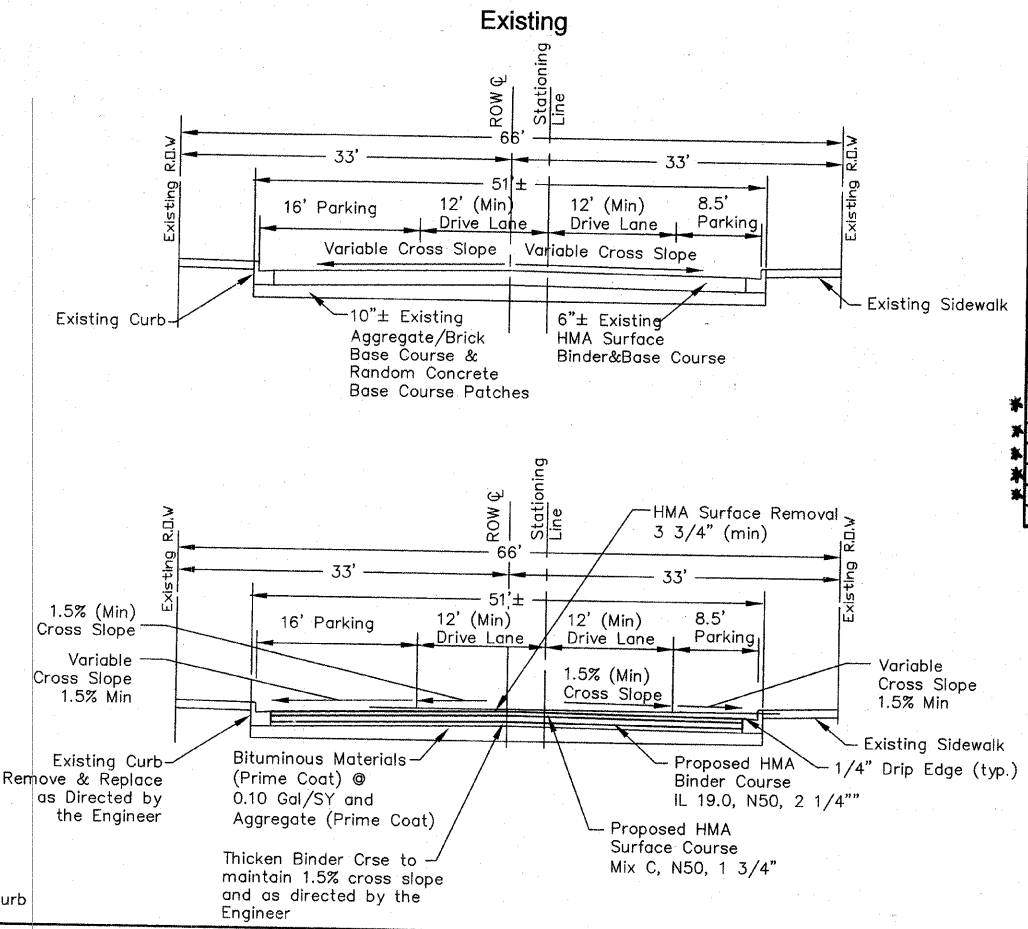
Manhole, Inlet & Water Valve Adjustment Schedule	
Sta	Type
100+19, 36' Lt	St Inlet
100+19, 37' Rt	St Inlet
102+48, 23' Rt	St Inlet
103+66, 13' Lt	Utility MH
103+90, 3' Rt	San MH
107+87, 1' Rt	San MH
108+03, 14' Lt	Water Valve
111+79, 14' Lt	Water Valve
111+82, 18' Lt	Water Valve
111+89, 13' Lt	Water Valve

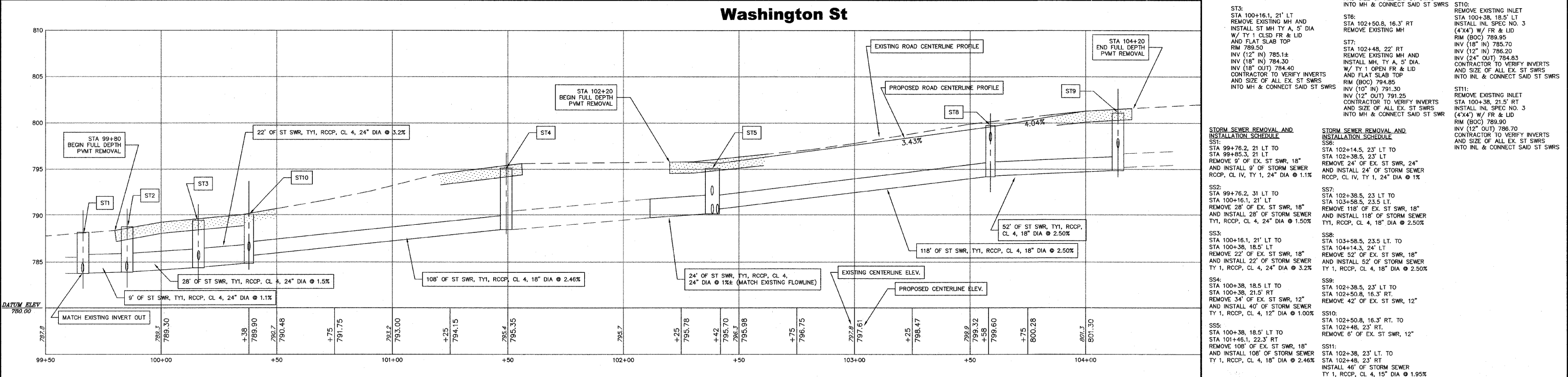
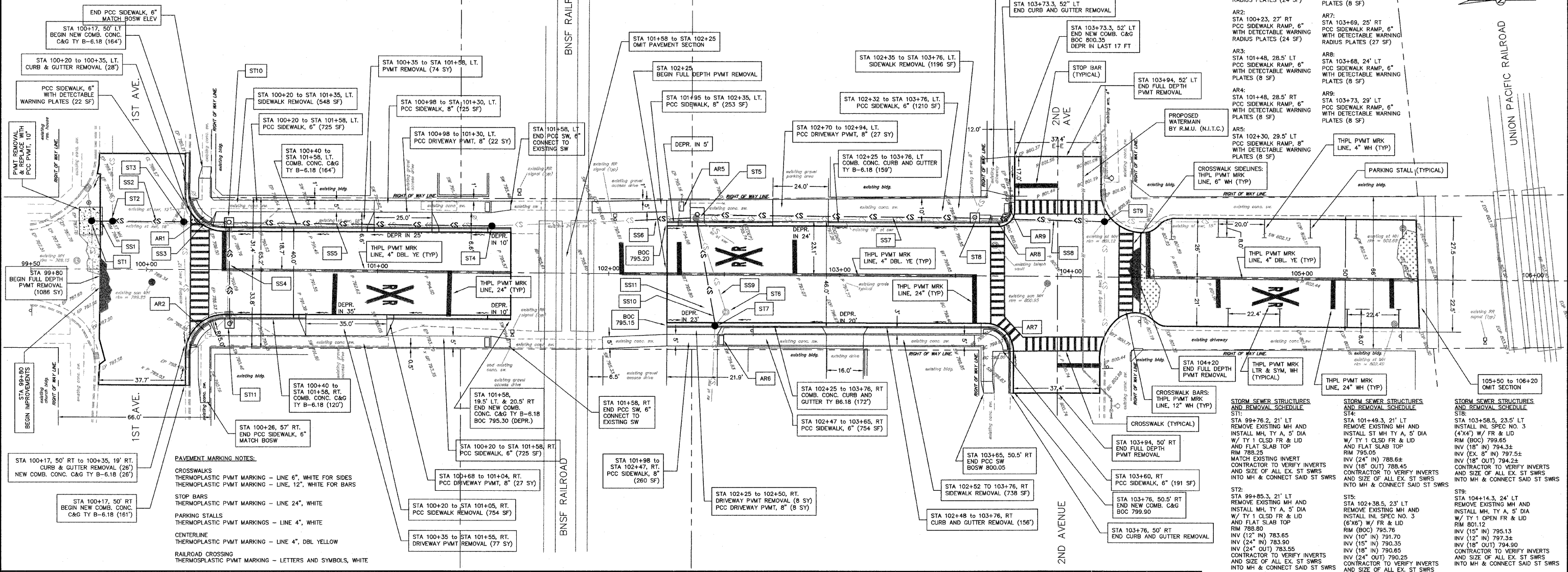
Typical Sections

Sta 99+80 to Sta 104+20

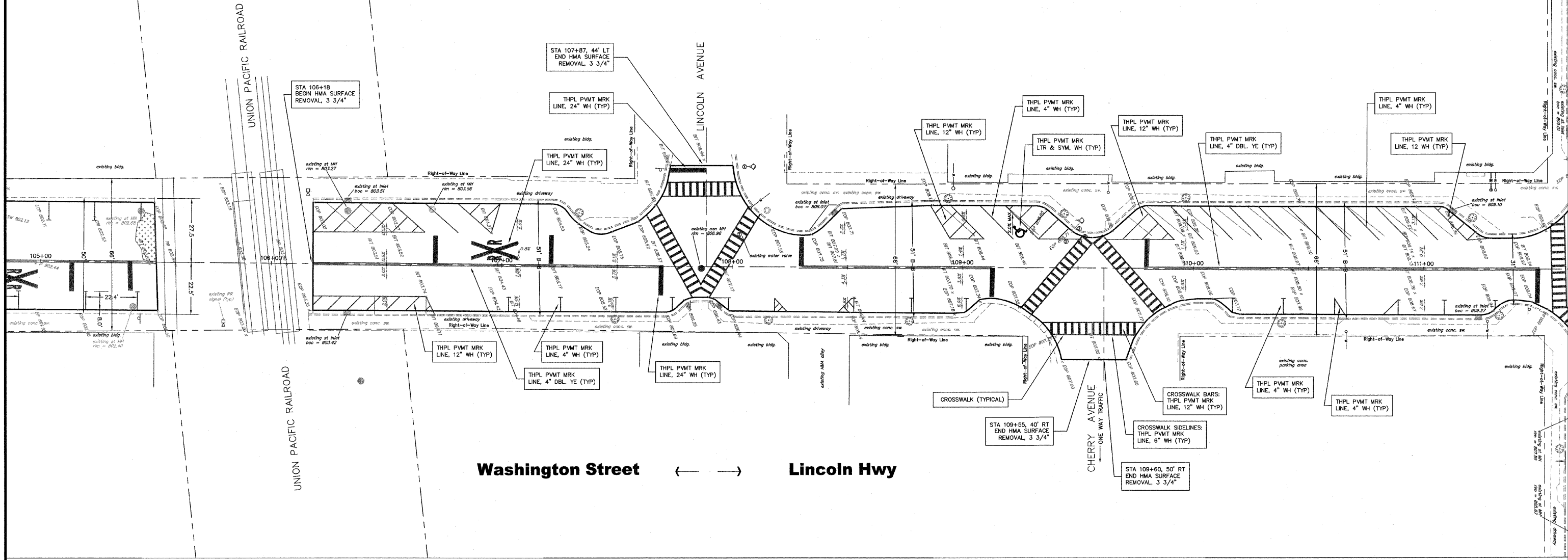


Sta 104+20 to Sta 115+50 & Sta 400+00 to Sta 406+00



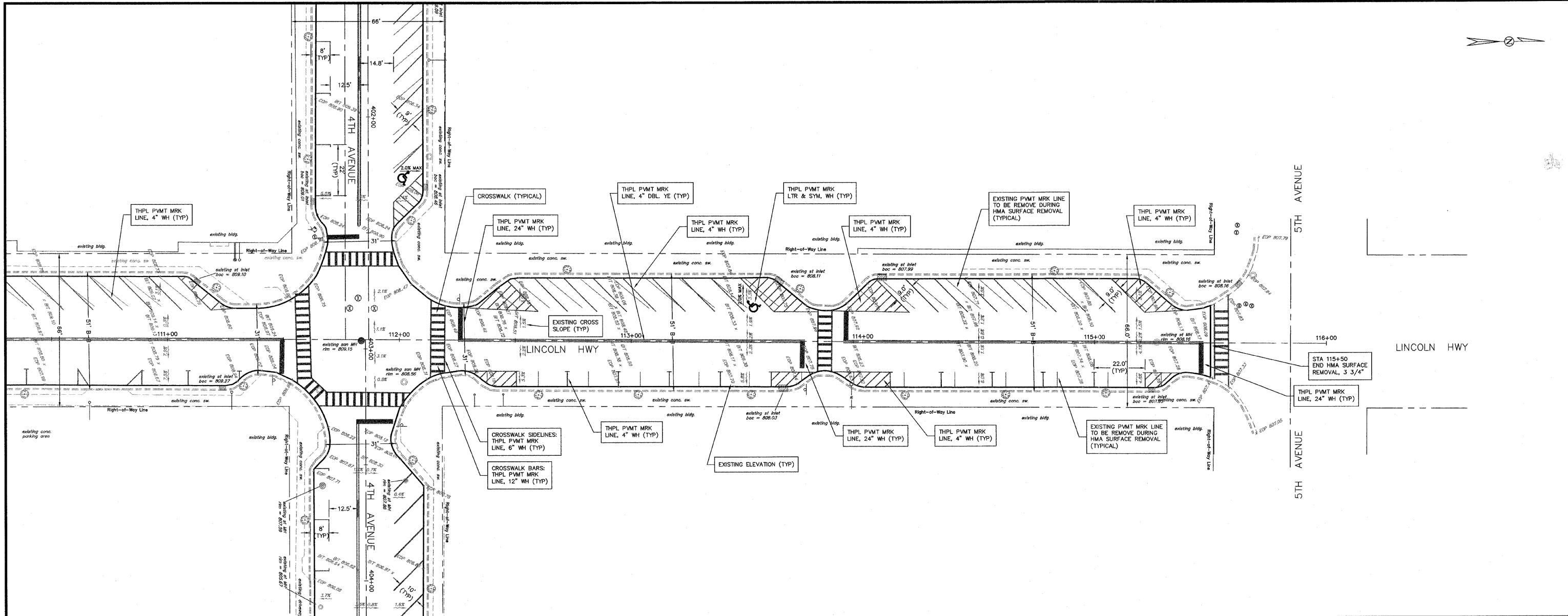
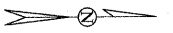


REV	DESCRIPTION	DATE	APPROVED

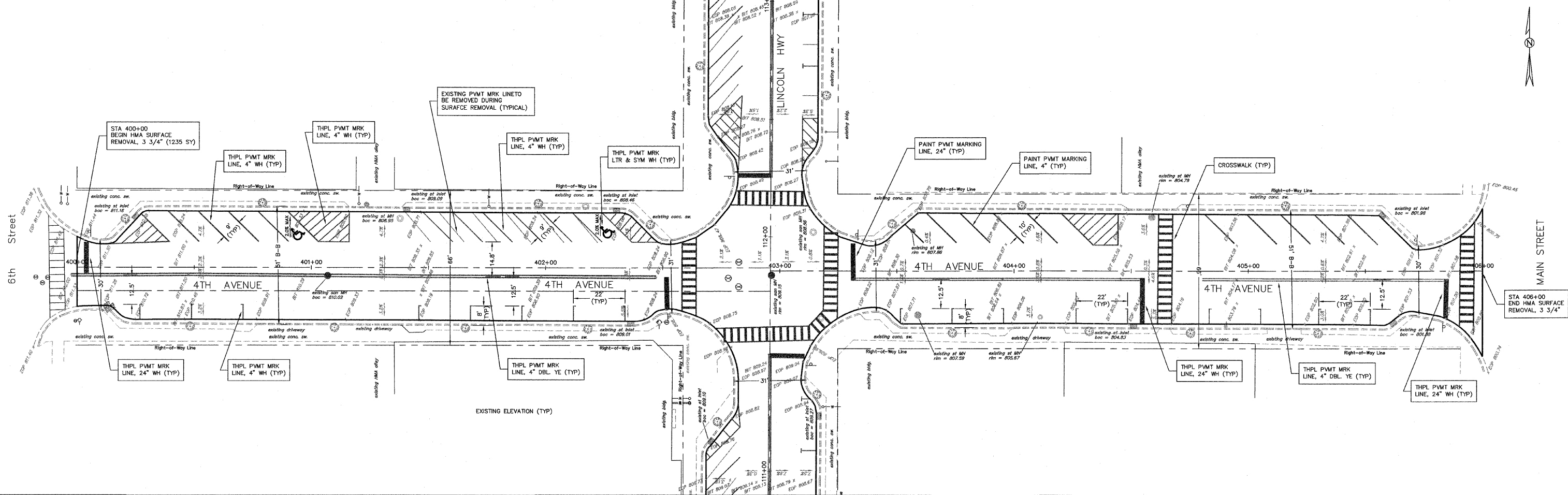


Washington Street ← → **Lincoln Hwy**

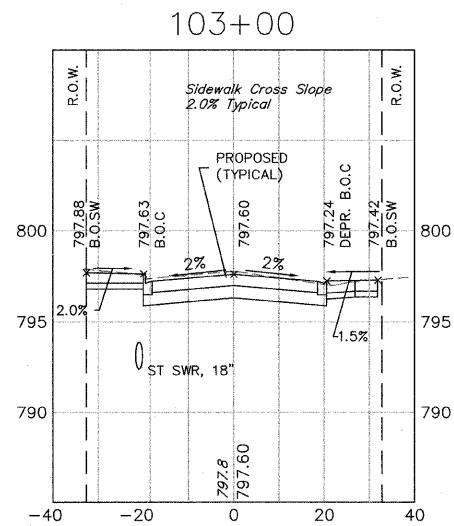
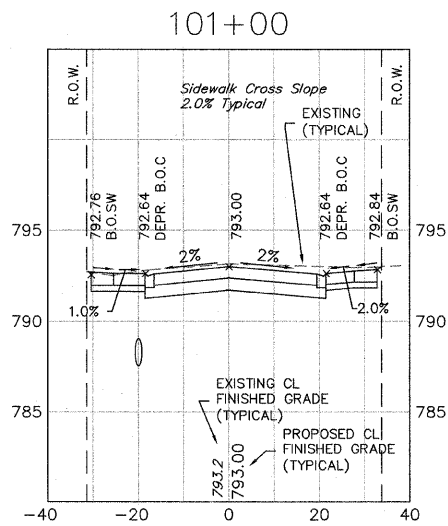
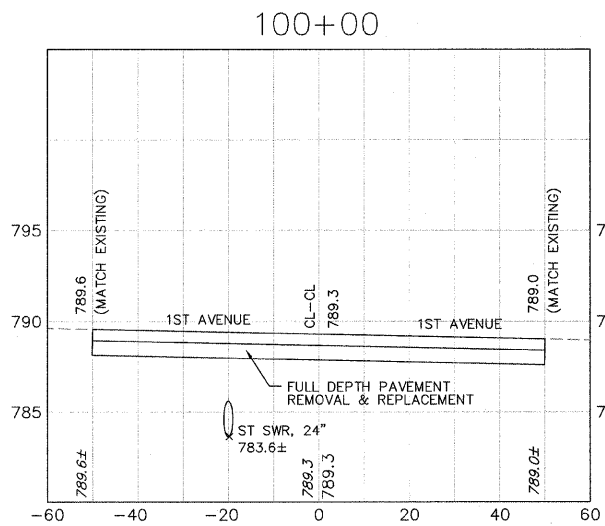
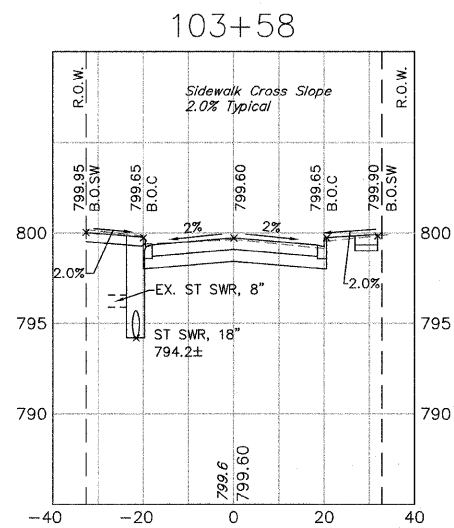
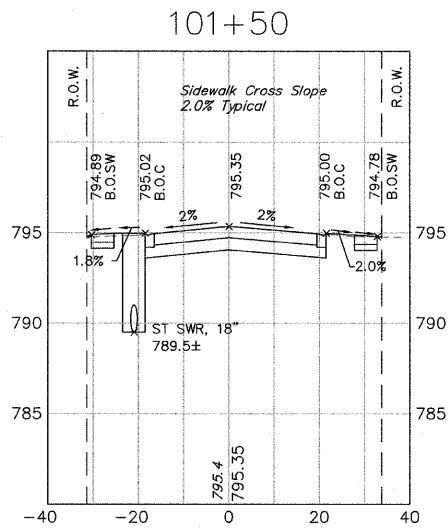
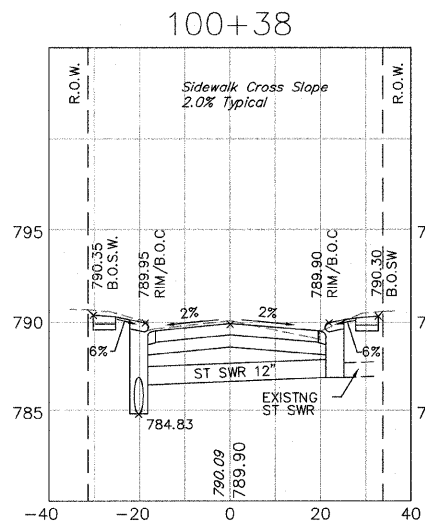
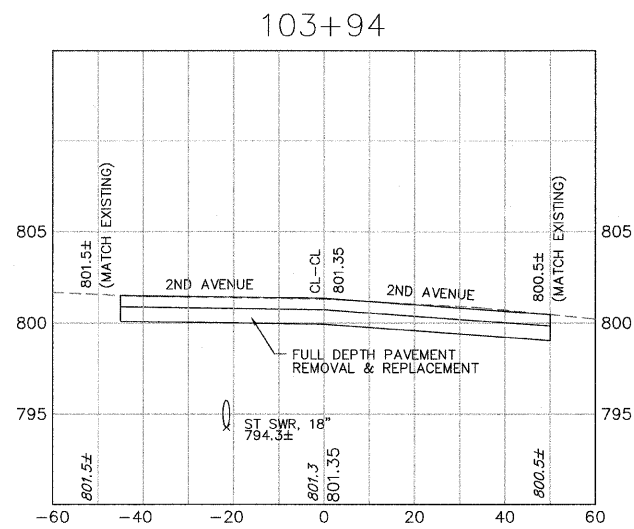
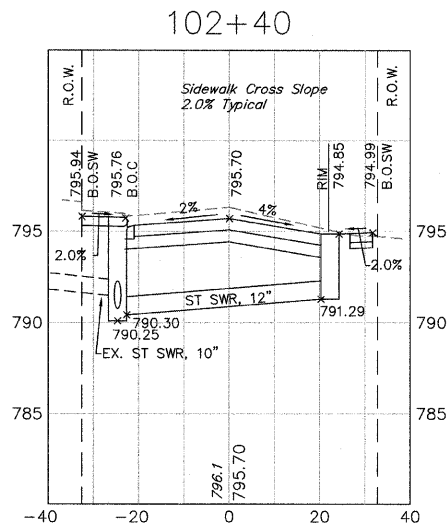
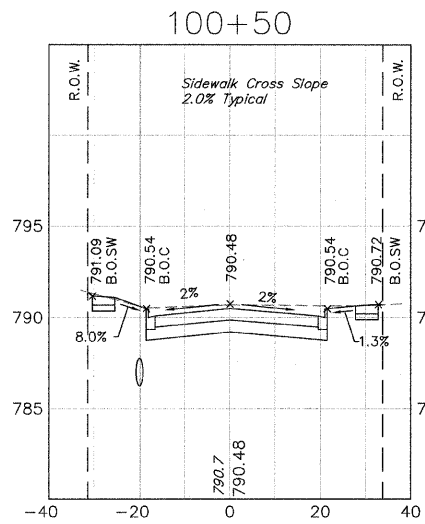
REVISIONS			
REV	DESCRIPTION	DATE	APPROVED



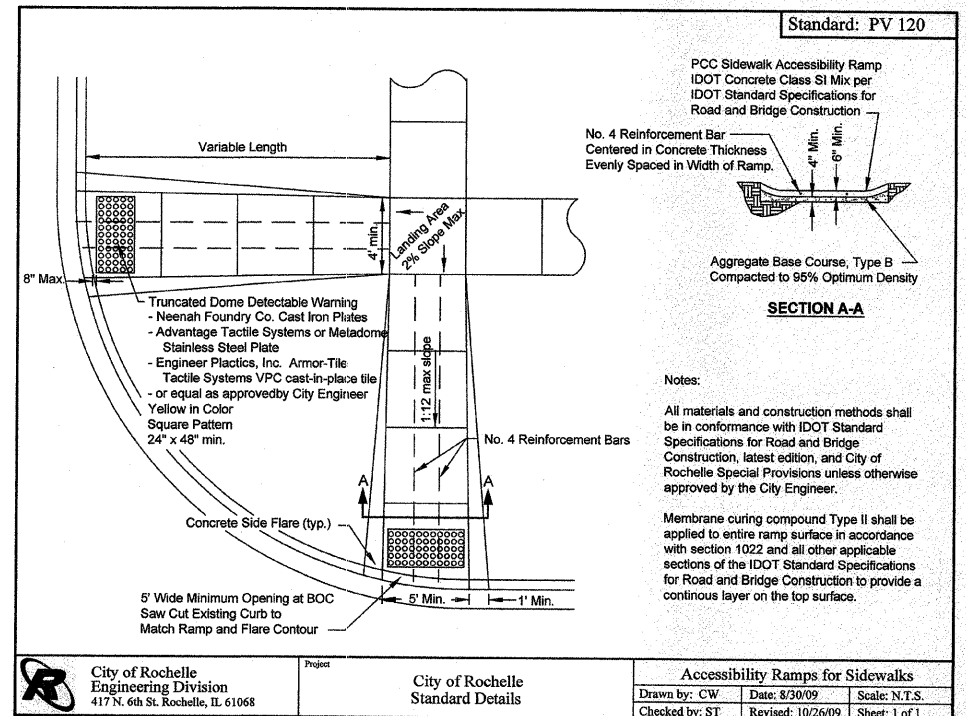
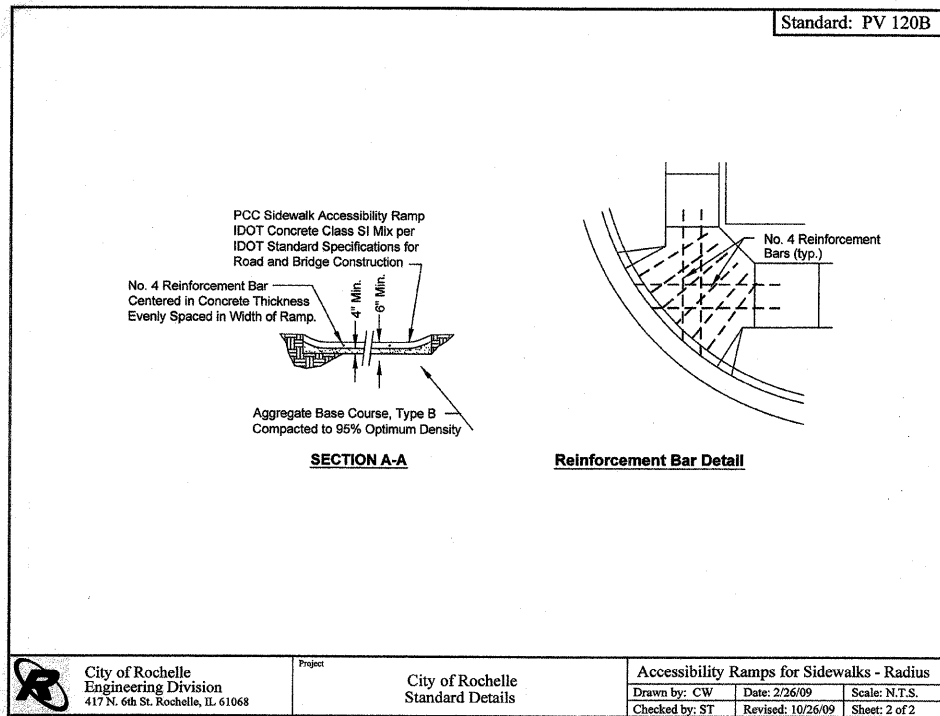
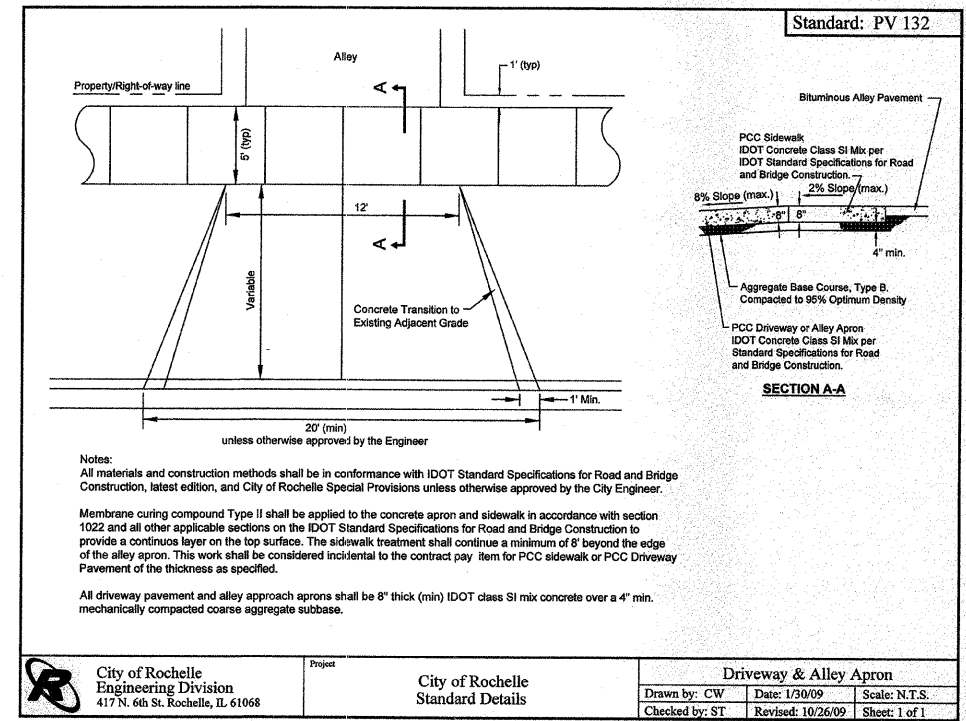
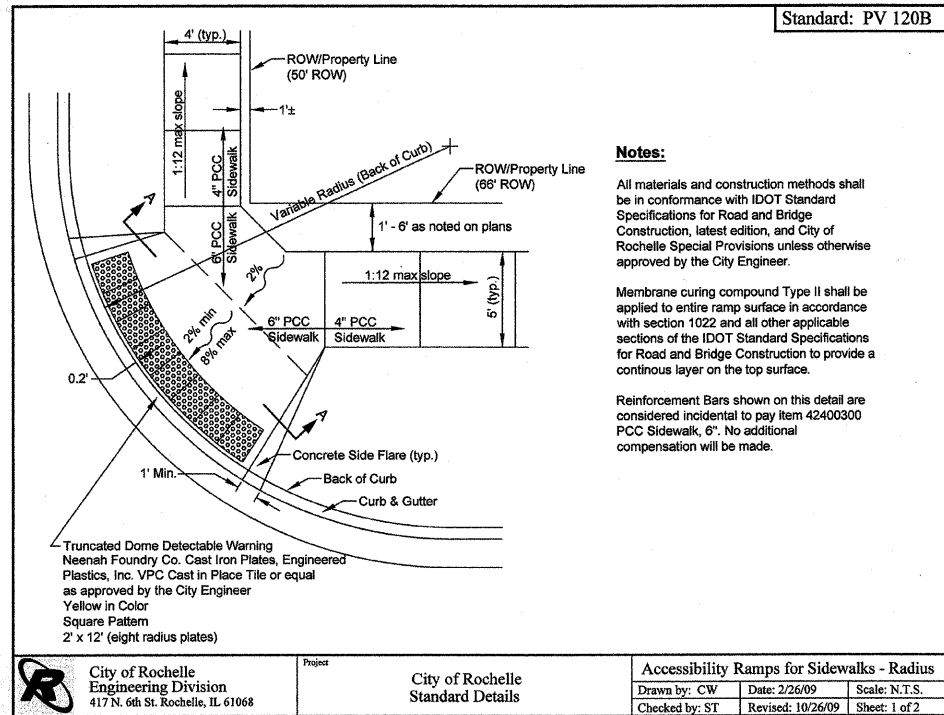
REVISIONS			
REV	DESCRIPTION	DATE	APPROVED



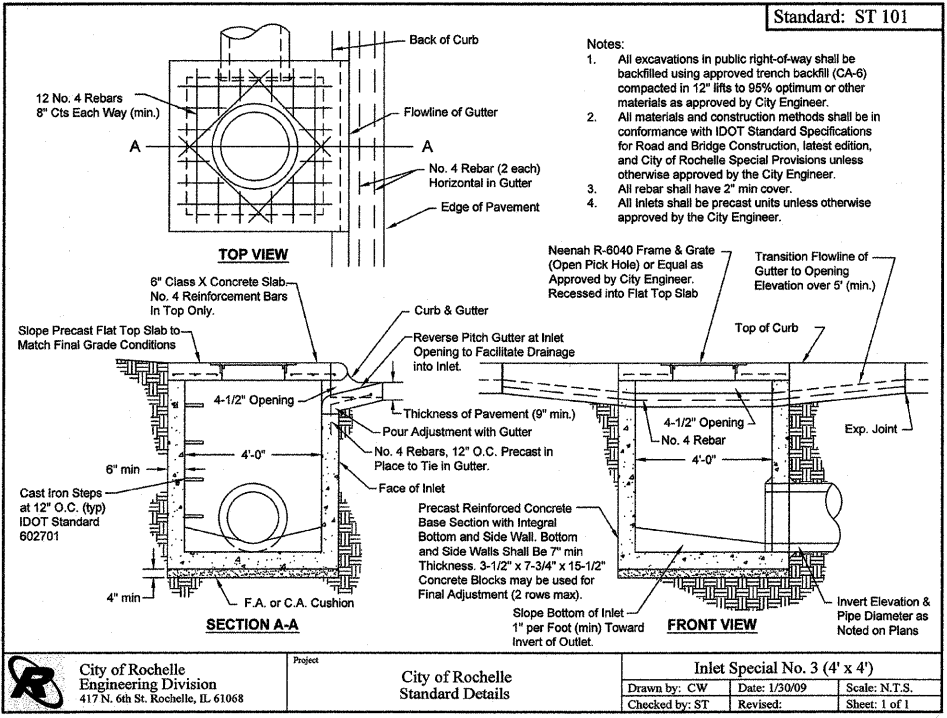
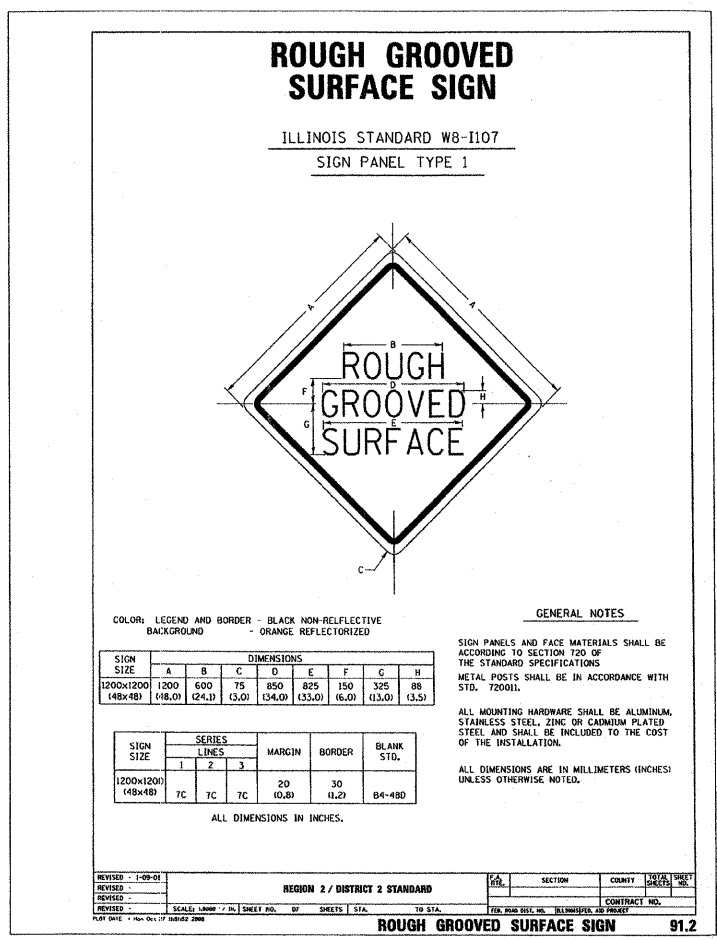
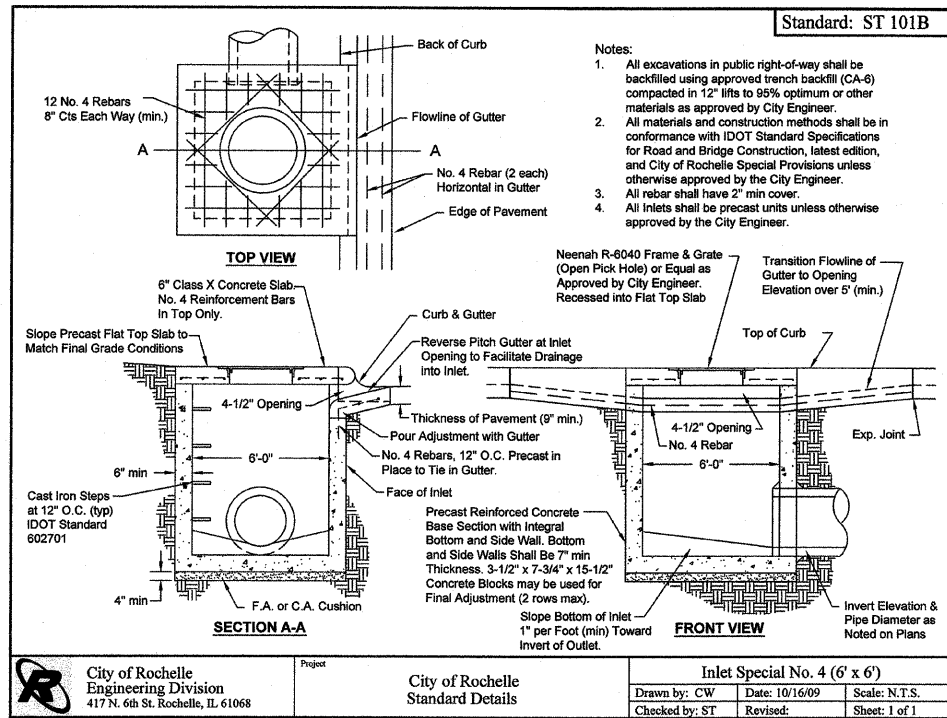
REVISIONS			
REV	DESCRIPTION	DATE	APPROVED



REVISIONS			
REV	DESCRIPTION	DATE	APPROVED



REVISIONS			
REV	DESCRIPTION	DATE	APPROVED



REVISIONS			
REV	DESCRIPTION	DATE	APPROVED

DRAWING: Details		
DRAWN BY: CW	SCALE	SHEET
CHECKED BY: ST	HORIZ SCALE: NA	9 of 10
DATE: 11/1/09	VERT SCALE: NA	

DETOUR ROUTE

- ① ROAD CLOSED 1000 FT SIGN (W20-3) WITH "WASHINGTON ST/1ST AVE INTERSECTION" SUPPLEMENTARY SIGN
- ② DETOUR LT ARROW (M4-9LT)
- ③ DETOUR RT ARROW (M4-9RT)
- ④ "WESTBOUND 1ST AVE" 24"x24" SUPPLEMENTARY SIGN BLACK LETTERS ON WHITE BACKGROUND
- ⑤ "EASTBOUND 1ST AVE" 24"x24" SUPPLEMENTARY SIGN BLACK LETTERS ON WHITE BACKGROUND
- ⑥ TYPE 3 BARRICADES (2 EA) WITH TYPE A FLASHERS AND ROAD CLOSED SIGN (R11-2)
- ⑦ TYPE 3 BARRICADES (2 EA) WITH TYPE A FLASHERS AND ROAD CLOSED TO THRU TRAFFIC SIGN (R11-4)
- ⑧ ROAD CONSTRUCTION AHEAD SIGN (W20-1A)
- ⑨ DETOUR AHEAD SIGN (W20-2) WITH ARROW (W1-6)

Notes:

The contractor shall furnish and install all temporary traffic control devices as required by the Manual for Uniform Traffic Control Devices (MUTCD), IL Supplement to the MUTCD, IDOT Standards and Specifications, and as directed by the engineer.

Sidewalk closure signs and additional traffic control devices not shown on this plan shall be furnished and installed by the contractor.

Complete road closure in project area is only allowed on Washington Street from 1st Avenue to 2nd Avenue. Contractor must provide access to 2nd St. west of 1st Avenue at all times.

Pavement Surface Removal and HMA Placement shall be completed in stages to reduce the disruption to downtown vehicular access.

See Traffic Control and Protection special provisions for further information and requirements including flaggers at all major sideroads and intersections.



REVISIONS			
REV	DESCRIPTION	DATE	APPROVED