

SCALE: 1" = 50'

STAGE 1

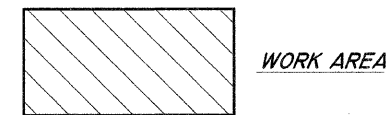
1. SET UP TRAFFIC CONTROL ACCORDING TO STANDARDS 701331, 701606, 701701, AND 701801.
2. REMOVE AND REBUILD MANHOLES AND CATCH BASINS ON EAST HALF OF 30TH STREET. INSTALL FIRE HYDRANTS AND VALVES AND VALVE BOXES.
3. REMOVE AND REPLACE PCC PAVEMENT ON EAST HALF OF INTERSECTION OF 30TH STREET AND 31ST AVENUE, AND EAST HALF OF 30TH STREET FROM RIVER HEIGHTS ROAD SOUTH 375'. SOUTHBOUND TRAFFIC ONLY ON THIS PORTION OF 30TH STREET. REMOVE AND REPLACE PCC BASE COURSE AT VARIOUS LOCATIONS ON EAST HALF OF 30TH STREET.
4. REMOVE AND REPLACE SIDEWALK AND DRIVEWAYS AT VARIOUS LOCATIONS ON EAST HALF OF 30TH STREET.

STAGE 2

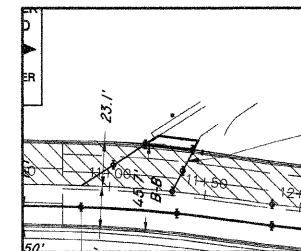
1. SET UP TRAFFIC CONTROL ACCORDING TO STANDARDS 701331, 701606, 701701, AND 701801.
2. REMOVE AND REBUILD MANHOLES AND CATCH BASINS ON WEST HALF OF 30TH STREET. INSTALL FIRE HYDRANTS AND VALVES AND VALVE BOXES.
3. REMOVE AND REPLACE PCC PAVEMENT ON WEST HALF OF INTERSECTION OF 30TH STREET AND 31ST AVENUE AND WEST HALF OF 30TH STREET FROM RIVER HEIGHTS ROAD SOUTH 375'. SOUTHBOUND TRAFFIC ONLY ON THIS PORTION OF 30TH STREET. REMOVE AND REPLACE PCC BASE COURSE AT VARIOUS LOCATIONS ON WEST HALF OF 30TH STREET.
4. REMOVE AND REPLACE SIDEWALK AND DRIVEWAYS AT VARIOUS LOCATIONS ON WEST HALF OF 30TH STREET.

NOTE:

DEVICES SEPARATING THE WORK AREA FROM TRAFFIC SHALL BE VERTICAL BARRICADES W/LIGHTS. DEVICES SEPARATING TRAFFIC SHALL BE FLEXIBLE DELINEATORS, OR GRABBER CONES. (SEE HIGHWAY STANDARD 701901 FOR DETAIL.)

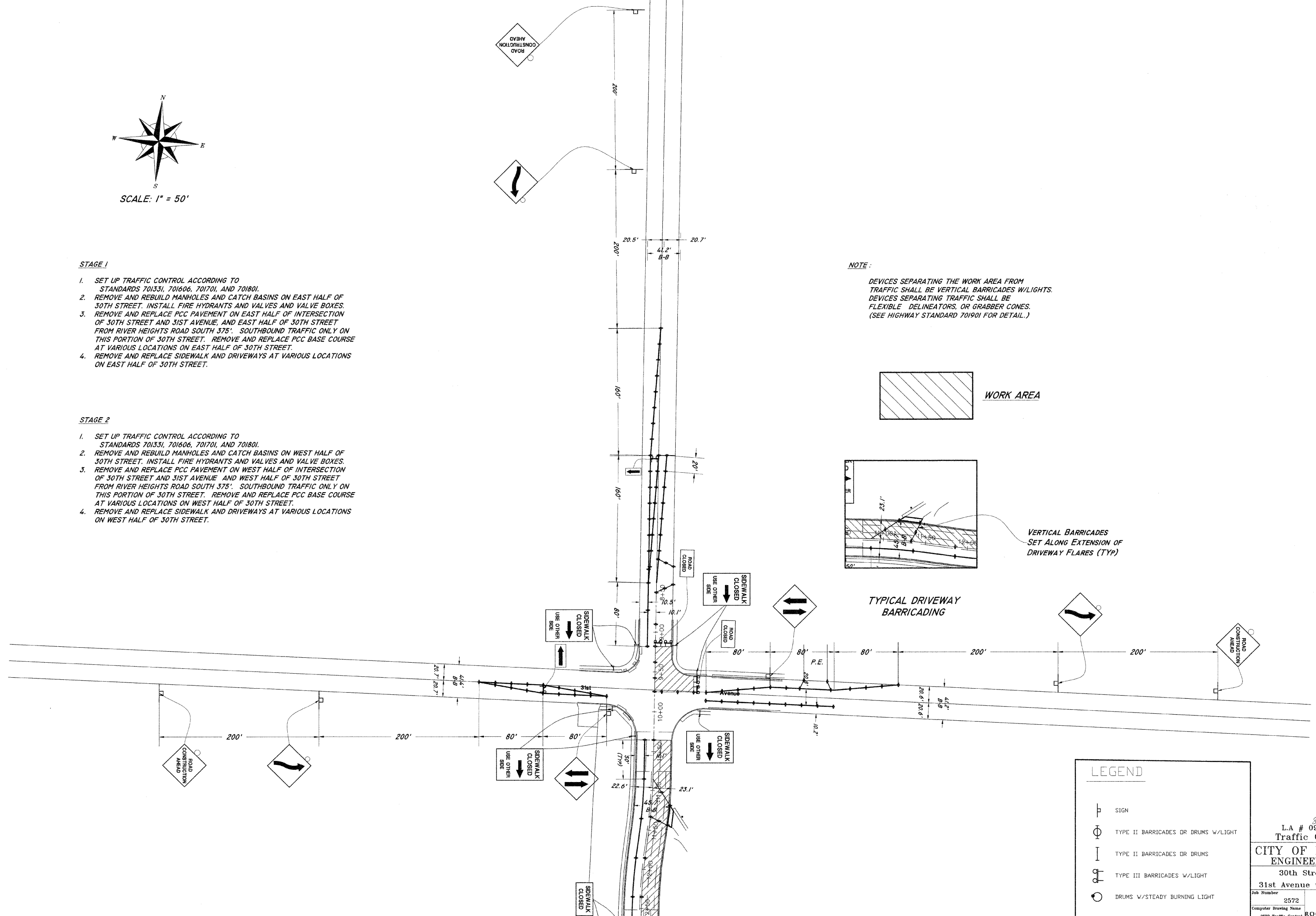


WORK AREA



VERTICAL BARRICADES SET ALONG EXTENSION OF DRIVEWAY FLARES (TYP)

TYPICAL DRIVEWAY BARRICADING



LEGEND	
	SIGN
	TYPE II BARRICADES OR DRUMS W/LIGHT
	TYPE II BARRICADES OR DRUMS
	TYPE III BARRICADES W/LIGHT
	DRUMS W/STEADY BURNING LIGHT

85497
L.A # 09-00186-00-RS
Traffic Control Detail

CITY OF ROCK ISLAND
ENGINEERING DIVISION

30th Street Resurfacing
31st Avenue to Blackhawk Road

Job Number	2572	Date	8-9-2009
Computer Drawing Name	2072 Traffic Control	By	mdw
Sheet	25	Of	43

ROCK ISLAND
ILLINOIS