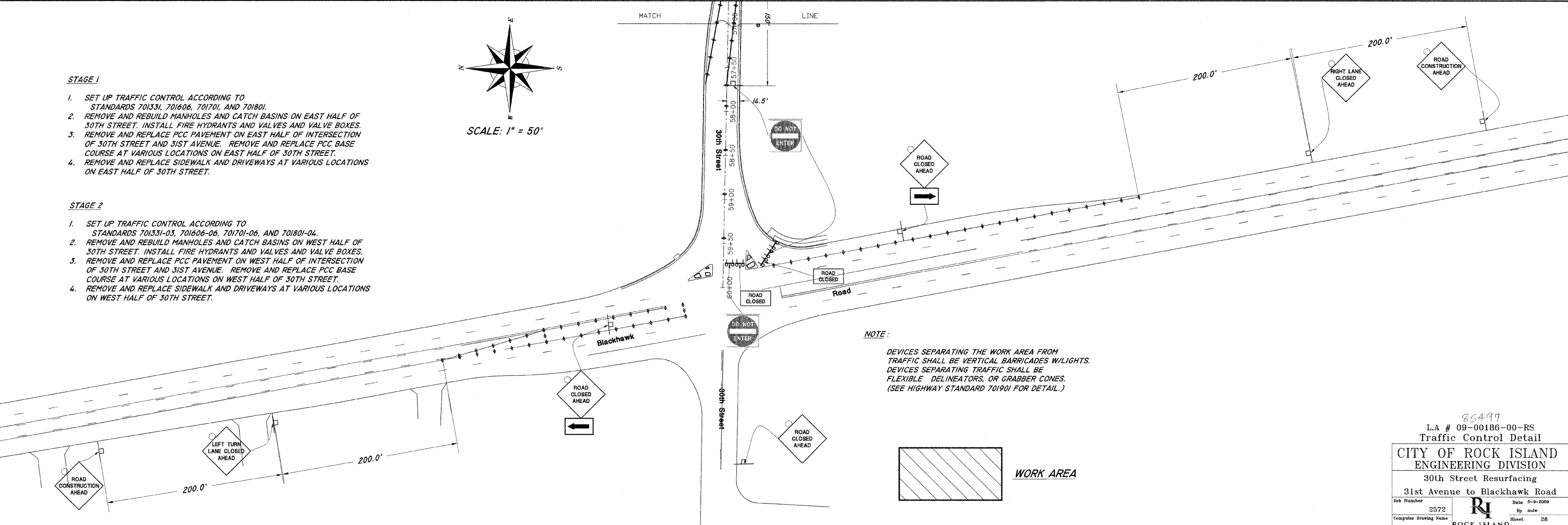
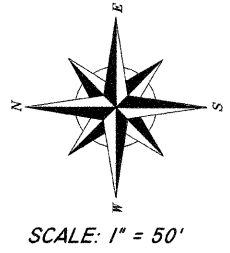


**STAGE 1**

1. SET UP TRAFFIC CONTROL ACCORDING TO STANDARDS 701331, 701606, 701701, AND 701801.
2. REMOVE AND REBUILD MANHOLES AND CATCH BASINS ON EAST HALF OF 30TH STREET. INSTALL FIRE HYDRANTS AND VALVES AND VALVE BOXES.
3. REMOVE AND REPLACE PCC PAVEMENT ON EAST HALF OF INTERSECTION OF 30TH STREET AND 31ST AVENUE. REMOVE AND REPLACE PCC BASE COURSE AT VARIOUS LOCATIONS ON EAST HALF OF 30TH STREET.
4. REMOVE AND REPLACE SIDEWALK AND DRIVEWAYS AT VARIOUS LOCATIONS ON EAST HALF OF 30TH STREET.

**STAGE 2**

1. SET UP TRAFFIC CONTROL ACCORDING TO STANDARDS 701331-03, 701606-06, 701701-06, AND 701801-04.
2. REMOVE AND REBUILD MANHOLES AND CATCH BASINS ON WEST HALF OF 30TH STREET. INSTALL FIRE HYDRANTS AND VALVES AND VALVE BOXES.
3. REMOVE AND REPLACE PCC PAVEMENT ON WEST HALF OF INTERSECTION OF 30TH STREET AND 31ST AVENUE. REMOVE AND REPLACE PCC BASE COURSE AT VARIOUS LOCATIONS ON WEST HALF OF 30TH STREET.
4. REMOVE AND REPLACE SIDEWALK AND DRIVEWAYS AT VARIOUS LOCATIONS ON WEST HALF OF 30TH STREET.



85497  
L.A # 09-00186-00-RS  
Traffic Control Detail  
CITY OF ROCK ISLAND  
ENGINEERING DIVISION  
30th Street Resurfacing  
31st Avenue to Blackhawk Road

Job Number	2572	Date	8-9-2009
Computer Drawing Name	2072 Traffic Control	By	mdw
Sheet	28	Of	43

ROCK ISLAND