

6" GATE VALVE WITH VERTICAL NON-RISING STEM, "O" RING STEM SEALS, 2" SQUARE OPERATING NUT, OPEN COUNTER CLOCK WISE & MECHANICAL JOINTS (AWWA C509). ALL BOLTS AND NUTS FOR THE VALVE BONNET AND VALVE THRUST PLATE SHALL BE #304 STAINLESS STEEL. CLOW RESILIENT WEDGE, MUELLER A-2360 RESILIENT WEDGE, OR APPROVED EQUAL. VALVE SHALL BE INSTALLED AS CLOSE TO THE MAIN AS POSSIBLE.

NOTE:

1. A COMPRESSION TYPE MAIN VALVE, CLOSING WITH STREAM FLOW. THE VALVE WILL BE DESIGNED TO BE HELD CLOSED IN COMPRESSION UNDER STATIC WATER PRESSURE. THE VALVE OPENING WILL BE 5.25" MINIMUM NOMINAL DIAMETER AND OPEN COUNTER-CLOCKWISE. OPERATING NUT SHALL BE 7/8" SQUARE IN SIZE.
2. THE INLET CONNECTION WILL BE 6" DIA. "OUT-IN" MECHANICAL JOINT (AS DESCRIBED IN SECTION II-2, CI) WITH RESTRAINING LUGS, FOOT PIECE BELL WILL ACCEPT PIPE OUTSIDE DIAMETERS IN THE 6.9" AND 7.1" RANGE.
3. ALL HYDRANT BOLTS AND NUTS FROM THE GRADE LINE MARK ON THE BARREL TO THE SHOE BOLTS AND NUTS SHALL BE #304 STAINLESS STEEL.
4. DELIVERY CLASSIFICATION - ONE PUMPER AND TWO HOSE NOZZLES. THESE NOZZLES SHALL BE 4.5" & 2.5" NOMINAL INSIDE DIA. RESPECTIVELY. THREADS SHALL BE OF NATIONAL STANDARD FIRE HOSE COUPLING SCREW DESIGN.
5. THE HYDRANTS WILL BE OF "TRAFFIC BREAKAWAY DESIGN," WITH GROUND LINE FLANGE AND SAFETY STEM OPERATOR COUPLING. GRADE LINE SHALL BE POSITIVELY MARKED ON THE LOWER BARREL. THE CENTER LINE OF ALL PORTS SHALL BE A MINIMUM OF 18" ABOVE ESTABLISHED GRADE LINES.
6. HYDRANTS WILL BE PROVIDED WITH BRONZE-LINED OUTLETS TO ALLOW CORROSION RESISTANT DRAINAGE OF THE BARREL SECTIONS. SEAT AND DRAIN RINGS WILL BE OF BRONZE COMPOSITION AS PROVIDED IN THE STANDARD RECOMMENDATIONS.
7. NOZZLE CAPS WILL OPEN COUNTER-CLOCKWISE, HAVE NATIONAL STANDARD TREADS, AND BE PROVIDED WITH A SECURITY CHAIN. OPERATING NUT SHALL BE 7/8" SQUARE IN SIZE.
8. POSITIVE O-RINGS SEALS WILL BE PROVIDED TO PROTECT STEM AND OPERATING NUT THREADS, AND ALL BEARING SURFACES FROM THE ATMOSPHERE AND THE WATERWAY. THE TOP WILL HAVE AN OIL RESERVOIR OR GREASE CHAMBER TO INSURE AUTOMATIC LUBRICATION OF THE STEM THREADS DURING OPERATION.
9. PRIMARY COATING AND PAINTING MUST COMPLY WITH THE STANDARD RECOMMENDATIONS, AND A SAFETY FINISH COAT WILL BE APPLIED ABOVE THE GRADE LINE. FINISH COAT MUST BE SAFETY YELLOW IN COLOR.

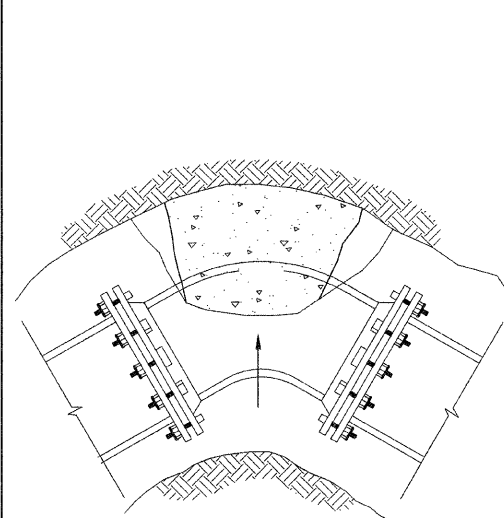
NOT TO SCALE

FIRE HYDRANT WITH GRADELOK OFFSET DETAIL

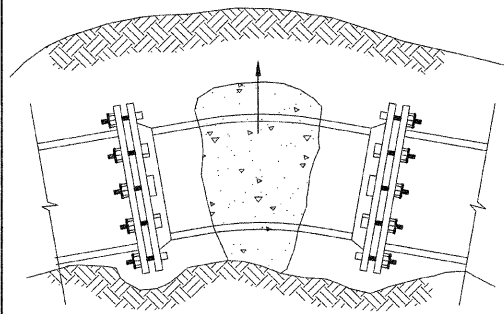
CITY OF ROCK ISLAND
ENGINEERING DIVISION

STANDARD NO. 301A

S:\... \MISC\STANDARD\CRI_STD_301A.DWG

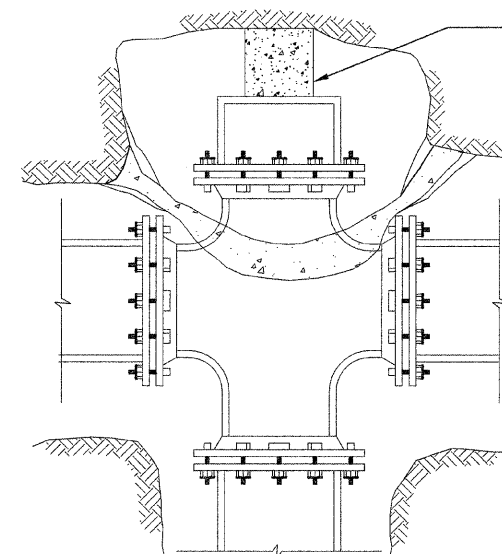


90° ELBOW

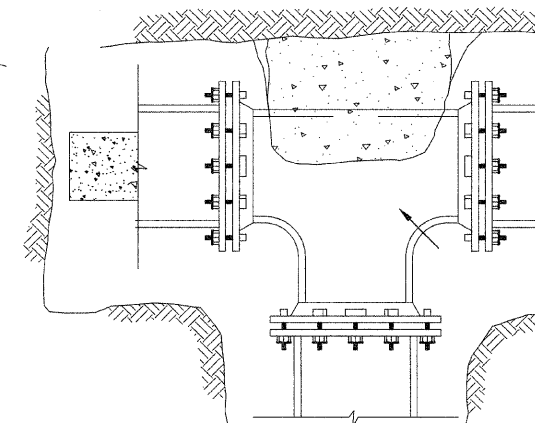


VERTICAL BEND

NOT TO SCALE



PLUGGED CROSS



PLUGGED TEE

BRACE PLUG AGAINST UNDISTURBED EARTH WITH SOLID CONCRETE BLOCK OR POURED CONCRETE. (TYPICAL)

TEE

NOTES:

1. ALL BLOCKS BEAR AGAINST UNDISTURBED EARTH.
2. ARROWS INDICATE DIRECTION OF THRUST.
3. ALL THRUST BLOCKS TO BE 3000 PSI CONCRETE.
4. ALL FITTING SHOWN IN PLAN EXCEPT VERTICAL BEND.
5. FRESH CONCRETE SHALL NOT TOUCH FLANGE OR FLANGE BOLTS.

TYPICAL THRUST BLOCK INSTALLATIONS

CITY OF ROCK ISLAND
ENGINEERING DIVISION

STANDARD NO. 302

85A97
09-00186-00-RS
C.R.I. STANDARD DETAILS
CITY OF ROCK ISLAND
ENGINEERING DIVISION

30th Street Resurfacing
31st Avenue to Blackhawk Road

Job Number	2592	Date	2-24-09
Computer Drawing Name	2592 Standard Details	By	mdw
Sheet	40	Of	43



ROCK ISLAND
ILLINOIS