

B5502

F.A.U. RTE.	SECTION	COUNTY	TOTAL SHEETS	SHEET NO.
5299	09-00034-00-RS	JO DAVIESS	8	1

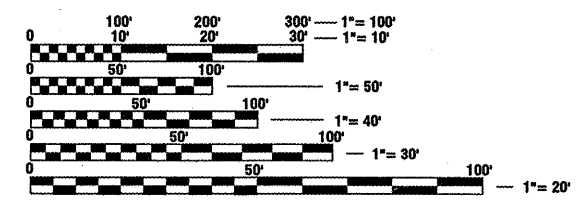
INDEX OF SHEETS

SHEET NO.	SHEET DESCRIPTION
1	TITLE SHEET
2	GENERAL NOTES / ROUGH GROOVED SURFACE SIGN DETAIL
3	SUMMARY OF QUANTITIES / LEGEND
4	SCHEDULE OF QUANTITIES
5	TYPICAL SECTIONS
6	REMOVALS
7	PLAN & PROFILE
8	PAINT PAVEMENT MARKINGS

LIST OF STANDARDS

000001-05	STANDARD SYMBOLS, ABBREVIATIONS & PATTERNS
420001-07	PAVEMENT JOINTS
424001-05	CURB RAMPS FOR SIDEWALKS
606001-04	CONCRETE CURB TYPE B AND COMB C & G
701006-03	OFF-RD OPERATIONS, 2L, 2W 15' TO 24" FROM THE PAVEMENT EDGE
701301-03	LANE CLOSURE, 2L, 2W, SHORT TIME OPERATIONS
701501-05	URBAN LANE CLOSURE, 2L, 2W, UNDIVIDED
701801-04	LANE CLOSURE MULTILANE 1W OR 2W CROSSWALK OR SIDEWALK CLOSURE
701901-01	TRAFFIC CONTROL DEVICES
720011-01	METAL POSTS FOR SIGNS, MARKERS & DELINEATORS
728001-01	TELESCOPING STEEL SIGN POST
729001-01	APPLICATIONS OF TYPES A & B METAL POSTS
780001-02	TYPICAL PAVEMENT MARKINGS

FUNCTIONAL CLASSIFICATION
URBAN COLLECTOR
ADT - 275
DESIGN SPEED - 30 MPH
POSTED SPEED - REGULATORY
DUNLEITH TOWNSHIP



FULL SIZE PLANS HAVE BEEN PREPARED USING STANDARD ENGINEERING SCALES. REDUCED SIZED PLANS WILL NOT CONFORM TO STANDARD SCALES. IN MAKING MEASUREMENTS ON REDUCED PLANS, THE ABOVE SCALES MAY BE USED.

J.U.L.I.E.
JOINT UTILITY LOCATION INFORMATION FOR EXCAVATION
1-800-892-0123

PLANS PREPARED BY:
WHKS & CO.
 SPRINGFIELD, IL
 EAST DUBUQUE, IL
 DESIGN FIRM #184001036

DEPARTMENT OF TRANSPORTATION

DIVISION OF HIGHWAYS

PROPOSED HIGHWAY PLANS

FAU ROUTE 5299 (2nd STREET)

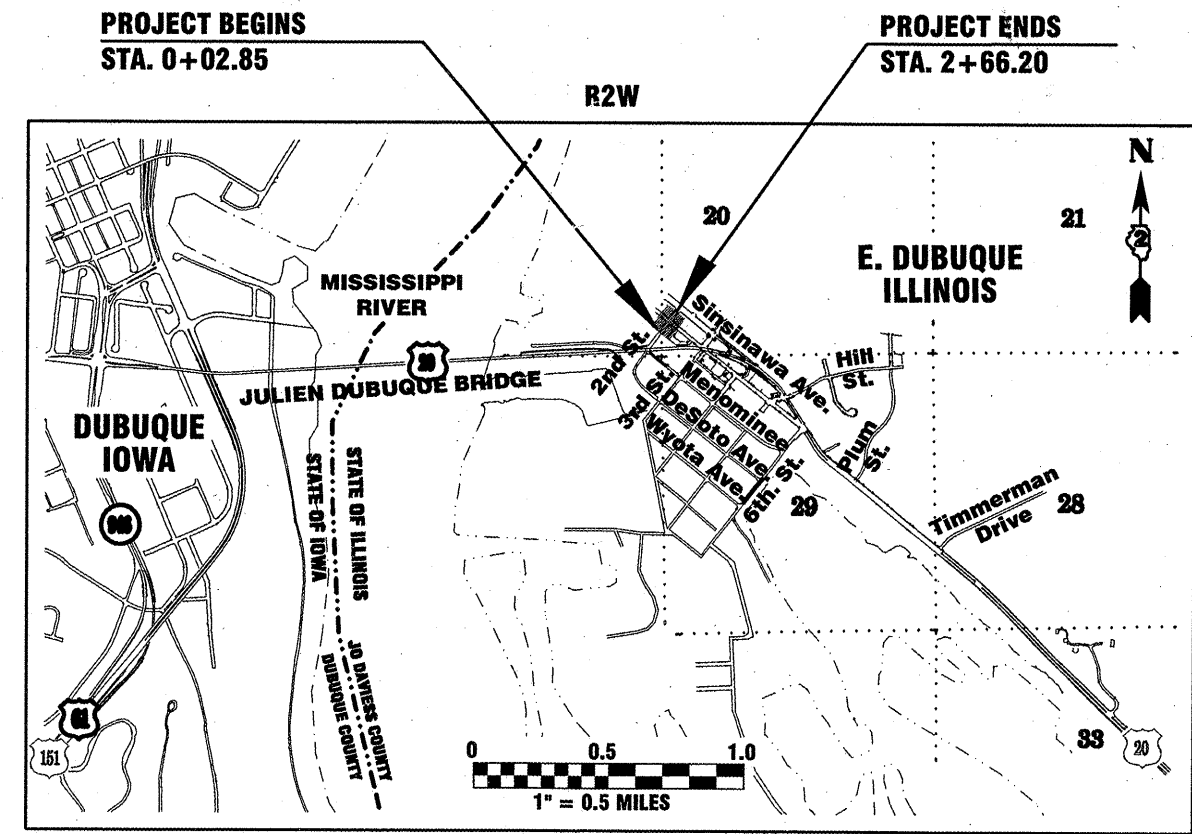
SECTION 09-00034-00-RS

ARA-5206 (004)

CITY OF EAST DUBUQUE

JOB NO. C-92-181-09

CONTRACT NO. 85502



PROJECT BEGINS STA. 0+02.85 **PROJECT ENDS STA. 2+66.20**

LENGTH OF PROJECT = 263.35 FEET = 0.050 MILES



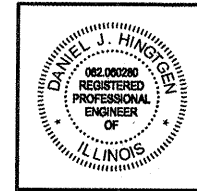
LOCATION OF SECTION INDICATED THIS: - [shaded area]

AGENCY RESPONSIBLE FOR LETTING

APPROVED: Oct 23 20 09
 AL GRIFFITHS, CITY OF EAST DUBUQUE CITY MANAGER

PASSED: Nov 5 20 09
 DISTRICT TWO ENGINEER OF LOCAL ROADS & STREETS

RELEASING FOR BID BASED ON LIMITED REVIEW: Nov 5 20 09
 George F. Ryan, DEPUTY DIRECTOR OF HIGHWAYS, REGION TWO ENGINEER



I hereby certify that this engineering document was prepared by me or under my direct personal supervision and that I am a duly Registered Professional Engineer under the laws of the State of Illinois.

Daniel J. Hingst Reg. No. 062.060280
 Date: 10/23/09
 My registration expires November 30, 2009

Pages or sheets covered by this seal: 1 thru 8

PRINTED BY THE AUTHORITY OF THE STATE OF ILLINOIS

85502

GENERAL NOTES

THE THICKNESS OF HOT-MIX ASPHALT SURFACE SHOWN ON THE PLANS IS THE NOMINAL THICKNESS. DEVIATIONS FROM THE NOMINAL THICKNESS WILL BE PERMITTED WHEN SUCH DEVIATIONS OCCUR DUE TO IRREGULARITIES IN THE EXISTING SURFACE OR BASE ON WHICH THE HOT-MIX ASPHALT SURFACE COURSE IS PLACED.

UTILITIES: THE CONTRACTOR SHALL BE RESPONSIBLE FOR PROTECTING UTILITY PROPERTY DURING CONSTRUCTION OPERATIONS AS OUTLINED IN ARTICLE 107.31 OF THE STANDARD SPECIFICATIONS. A MINIMUM OF 48 HOURS IN ADVANCE NOTICE IS REQUIRED FOR NON-EMERGENCY WORK. THE J.U.L.I.E. NUMBER IS 1-800-892-0123. THE FOLLOWING LISTED UTILITIES LOCATED WITHIN THE PROJECT LIMITS OR IMMEDIATELY ADJACENT TO THE PROJECT CONSTRUCTION LIMITS ARE MEMBERS OF J.U.L.I.E:

ALLIANT ENERGY ELECTRIC COMPANY PHONE: (800) 255-4268

EAST DUBUQUE WATER & SEWER MARK FLUHR & JENIFER BECHER PHONE: (815) 747-3232

FRONTIER COMMUNICATIONS (CABLE CO.) PHONE: (800) 921-8101

JO CARROLL ELECTRIC COOPERATIVE PHONE: (800) 858-5522

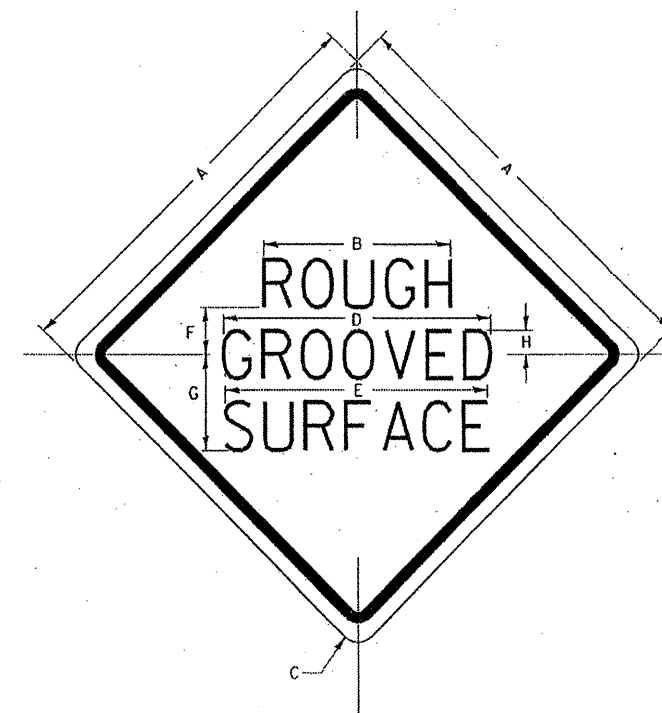
MCLEOD USA SERVICES (PHONE CO.) PHONE: (630) 570-5111

MEDIACOM (PHONE/CABLE CO.) PHONE: (800) 747-8021

NICOR GAS COMPANY PHONE: (888) 642-6748

ROUGH GROOVED SURFACE SIGN

ILLINOIS STANDARD W8-I107
SIGN PANEL TYPE 1



COLOR: LEGEND AND BORDER - BLACK NON-REFLECTIVE
BACKGROUND - ORANGE REFLECTORIZED

GENERAL NOTES

SIGN PANELS AND FACE MATERIALS SHALL BE ACCORDING TO SECTION 720 OF THE STANDARD SPECIFICATIONS
METAL POSTS SHALL BE IN ACCORDANCE WITH STD. 720011.

ALL MOUNTING HARDWARE SHALL BE ALUMINUM, STAINLESS STEEL, ZINC OR CADMIUM PLATED STEEL AND SHALL BE INCLUDED TO THE COST OF THE INSTALLATION.

ALL DIMENSIONS ARE IN MILLIMETERS (INCHES) UNLESS OTHERWISE NOTED.

SIGN SIZE	DIMENSIONS							
	A	B	C	D	E	F	G	H
1200x1200 (48x48)	1200 (48.0)	600 (24.1)	75 (3.0)	850 (34.0)	825 (33.0)	150 (6.0)	325 (13.0)	88 (3.5)

SIGN SIZE	SERIES LINES			MARGIN	BORDER	BLANK STD.
	1	2	3			
1200x1200 (48x48)	7C	7C	7C	20 (0.8)	30 (1.2)	B4-48D

ALL DIMENSIONS IN INCHES.

REVISED - 1-09-08	REGION 2 / DISTRICT 2 STANDARD	F.A. RTE.	SECTION	COUNTY	TOTAL SHEETS	SHEET NO.	
REVISED -							
REVISED -		SCALE: 1/8" = 1'-0" IN.	SHEET NO. OF SHEETS	STA. TO STA.	CONTRACT NO.		
REVISED -		PLOT DATE: Mon Oct 27 11:51:52 2008			FED. ROAD DIST. NO. [ILLINOIS] FED. AID PROJECT		

ROUGH GROOVED SURFACE SIGN 91.2

DESIGNED - DJH	REVISED
DRAWN - DJH	REVISED
CHECKED -	REVISED
PLOT SCALE =	
Date: Fri, October 23, 2009 - 2:04pm Filename: G:\Dep\3\7230 - East DBD 2nd STREET\DD\TITLE SHEET.dwg	

WHKS & CO. SPRINGFIELD, IL
EAST DUBUQUE, IL
DESIGN FIRM #184001036

STATE OF ILLINOIS DEPARTMENT OF TRANSPORTATION

GENERAL NOTES / ROUGH GROOVED SURFACE SIGN DETAIL

SCALE: N/A SHEET NO. 1 OF 1 SHEETS STA. _____ TO STA. _____

F.A. RTE.	SECTION	COUNTY	TOTAL SHEETS	SHEET NO.
5299	09-00034-00-RS	JO DAVIESS	8	2
CONTRACT NO. 85502				
FED. ROAD DIST. NO. 2 [ILLINOIS] FED. AID PROJECT				

SCHEDULE OF QUANTITIES

85502

20200100 EARTH EXCAVATION					
LOCATION	STATION	STATION	WIDTH	CU YD	
2nd STREET	0+38.5 20' RT	0+93.3 20' RT	4	5	
2nd STREET	0+75.0 20' LT	1+12.6 20' to 32' LT	4	3	
2nd STREET	0+96.3 20' RT	1+12.6 34.9 RT	4	4	
2nd STREET	1+45.6 33.5' to 20' RT	2+64.2 20' to 32.1' RT	4	2	
2nd STREET	1+45.6 32.1' LT	1+57 20' LT	4	13	
2nd STREET	2+46.4 20' IT	2+61.2 35.4' LT	4	3	
FOR PROPOSED CURB AND GUTTER AREA, EXTENDS 2' OUT FROM BACK OF CURB					30

25200100 SODDING		
LOCATION	SIDE	AREA (SQ YD)
0+35.5 TO 100+00.5	27.5' RT	22.0
TOTAL		22

31102500 SUB-BASE GRANULAR MATERIAL, TYPE C 8"				
LOCATION	SIDE	FROM	TO	AREA (SQ YD)
2nd STREET	RIGHT	0+38.5	1+12.6	34.60
2nd STREET	LEFT	0+75	1+12.6	20.00
2nd STREET	RIGHT	1+45.6	2+64.2	59.20
2nd STREET	LEFT	1+45.6	1+57	9.30
2nd STREET	LEFT	2+46.4	2+61.2	12.50
FOR PROPOSED CURB AND GUTTER AREA, EXTENDS 2' OUT FROM BACK OF CURB				
TOTAL				136

40600100 BITUMINOUS MATERIAL (PRIME COAT)		
LOCATION	STATION	GALLON
2nd STREET	0+02.85 2+46.70	550.5
CALCULATED AT 0.5 GAL/SQ YD		
TOTAL		551

40600990 TEMPORARY RAMP				
LOCATION	STATION	LENGTH (feet)	WIDTH (feet)	SQ YD
2nd STREET	0+02.85	7	36	28.0
2nd STREET	2+46.70	7	36	28.0
WALL STREET	0+96.3	7	30	23.3
WALL STREET	1+45.6	7	30	23.3
TOTAL				103

40603310 HOT-MIX ASPHALT SURFACE COURSE, MIX "C", N50			
LOCATION	FROM	TO	TON
2nd STREET	0+02.85	2+46.70	120.00
TOTAL			120

42300300 PORTLAND CEMENT CONCRETE DRIVEWAY PAVEMENT, 7 INCH				
LOCATION	STATION	SIDE	TYPE	AREA (SQ YD)
2nd STREET	1+60.6 TO 2+46.5	RT	C.E.	30
TOTAL				30

42400300 PORTLAND CEMENT CONCRETE SIDEWALK, 6 INCH					
LOCATION	STATION	STATION	WIDTH	AREA (SQ FT)	
2nd STREET	0+38.5 23.0' RT	1+10.6 23.0' RT	6	467	
2nd STREET	0+75.0 22.8' LT	1+10.6 22.8' LT	6	252	
2nd STREET	1+45.6 31.1' RT	1+60.6 31.1' RT	VARIES	137	
2nd STREET	1+45.7 23.6' LT	1+57.0 23.6' LT	VARIES	104	
2nd STREET	2+46.4 23.0' LT	2+61.2 23.0' LT	VARIES	135	
2nd STREET	2+46.4 24.5' RT	2+64.2 24.5' RT	VARIES	129	
TOTAL					1,225

42400800 DETECTABLE WARNINGS				
LOCATION	STATION	WIDTH	LENGTH	AREA (SQ FT)
2nd STREET	1+06 LT 25.0	2.0	6.0	12
2nd STREET	1+09 RT 22.1	2.0	6.0	12
2nd STREET	1+47.6 LT 22.1	2.0	6.0	12
2nd STREET	1+50.2 RT 25.0	2.0	6.0	12
2nd STREET	2+55.8 LT 23.6	2.0	6.0	12
2nd STREET	2+56.9 RT 21.5	2.0	6.0	12
TOTAL				72

44000157 HOT-MIX ASPHALT SURFACE REMOVAL, 2"		
STATION	AREA (SQ YD)	
0+02.85 2+46.70	1,101	
TOTAL		1,101

44000200 DRIVEWAY PAVEMENT REMOVAL				
STATION	AREA (SQ YD)			
1+60.6 21.5' RT 2+46.5 21.5' RT	29.7			
TOTAL		30		

44000500 COMBINATION CONCRETE CURB & GUTTER REMOVAL		
STATION	LENGTH (FOOT)	
0+38.5 RT 20'	0+93.3 RT 20'	54.8
0+75 LT 20'	1+12.6 LT 20' to 32'	45
0+96.3 RT 20'	1+12.6 RT 34.9'	22.7
1+45.6 RT 33.5' to 20'	2+64.2 RT 20' to 32.1	132.5
1+45.6 LT 32.1'	1+57 LT 20'	20.9
2+46.4 RT 20'	2+61.2 RT 35.4'	24.1
TOTAL		300

44000600 SIDEWALK REMOVAL			
STATION	SIDE	AREA (SQ FT)	
0+38.5	1+10.6	RIGHT	407.9
0+75.0	1+10.6	LEFT	252.4
1+45.6	1+60.6	RIGHT	137.1
1+45.6	1+57	LEFT	104
2+46.4	2+61.2	LEFT	135.3
2+46.4	2+64.2	RIGHT	129.2
TOTAL			1,166

44300300 AREA REFLECTIVE CRACK CONTROL TREATMENT, SYSTEM A		
STATION	AREA (SQ YD)	
0+02.85 2+46.70	1,101	
TOTAL		1,101

60255500 MANHOLES TO BE ADJUSTED		
STATION	OFFSET	QUANTITY (EA)
1+09	26.8' LT	1
1+28	8.4' LT	1
1+44	17.8' RT	1
1+48.8	0.2' LT	1
2+38.2	18.5' RT	1
TOTAL		5

60266600 VALVE BOXES TO BE ADJUSTED		
STATION	OFFSET	QUANTITY (EA)
0+08.8	8.8' LT	1
1+18.3	7.3' RT	1
TOTAL		2

60604600 COMBINATION CONCRETE CURB AND GUTTER, TYPE B-6.18 (DOWELED)					
LOCATION	STATION TO STATION	LENGTH (FOOT)			
2nd STREET	0+38.5 20.0' RT 0+93.3 20.0' RT	54.8			
2nd STREET	0+75 20.0' LT 1+12.6 20.0' to 32' LT	45.0			
2nd STREET	0+96.3 20.0' RT 1+12.6 34.9' RT	22.7			
2nd STREET	1+45.6 33.5' to 20' RT 2+64.2 20.0' to 32.1 RT	132.5			
2nd STREET	1+45.6 32.1 LT 1+57.0 20' LT	20.9			
2nd STREET	2+46.4 20.0' RT 2+61.2 35.4' RT	24.1			
TOTAL					300

78001110 PAINT PAVEMENT MARKING - LINE 4"			
STATION	LENGTH (FEET)	LINE LENGTH (FEET)	
0+02.85 1+01	98	196	
1+55 2+51	96	192	
TOTAL		388	

78001130 PAINT PAVEMENT MARKING - LINE 6"		
STREET	STATION	LINE LENGTH (FEET)
2nd STREET	1+03	38
2nd STREET	1+11	41
2nd STREET	1+45	41
2nd STREET	1+53	38
2nd STREET	2+53	38
2nd STREET	2+61	46
WALL STREET	10+20	32
WALL STREET	10+28	34
WALL STREET	10+69	34
WALL STREET	10+77	31
TOTAL		373

78001180 PAINT PAVEMENT MARKING - LINE 24"			
STREET	STATION	SIDE	LINE LENGTH (FEET)
2nd STREET	1+00	RT	17
2nd STREET	1+56	LT	17
2nd STREET	2+50	RT	17
WALL STREET	10+17	RT	15.5
WALL STREET	10+80	LT	15.5
TOTAL			82

DESIGNED - DJH REVISED
DRAWN - DJH REVISED
CHECKED - REVISED
PLOT SCALE =
Date: Fri, October 23, 2009 - 2:17pm Filename: G:\Dept\1\7230 - East DBO 2nd STREET\LD0\TITLE SHEET.dwg

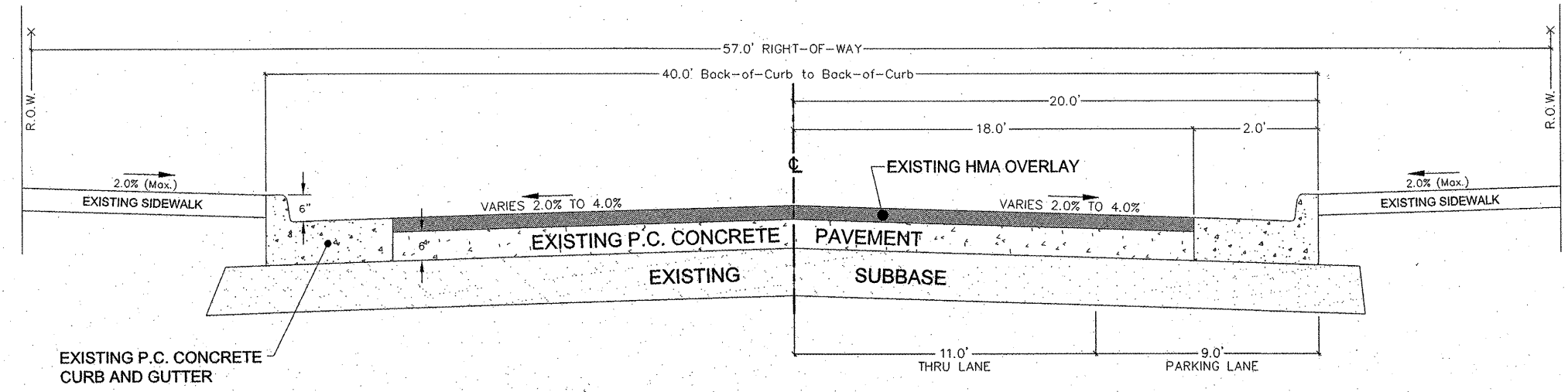
WHKS & CO.
SPRINGFIELD, IL
EAST DUBUQUE, IL
DESIGN FIRM #184001036

**STATE OF ILLINOIS
DEPARTMENT OF TRANSPORTATION**

SCHEDULE OF QUANTITIES

SCALE: N/A SHEET NO. 1 OF 2 SHEETS STA. _____ TO STA. _____

F.A.U. RTE.	SECTION	COUNTY	TOTAL SHEETS	SHEET NO.
5299	09-00034-00-RS	JO DAVIESS	8	4
CONTRACT NO. 85502				
FED. ROAD DIST. NO. 2 ILLINOIS FED. AID PROJECT				

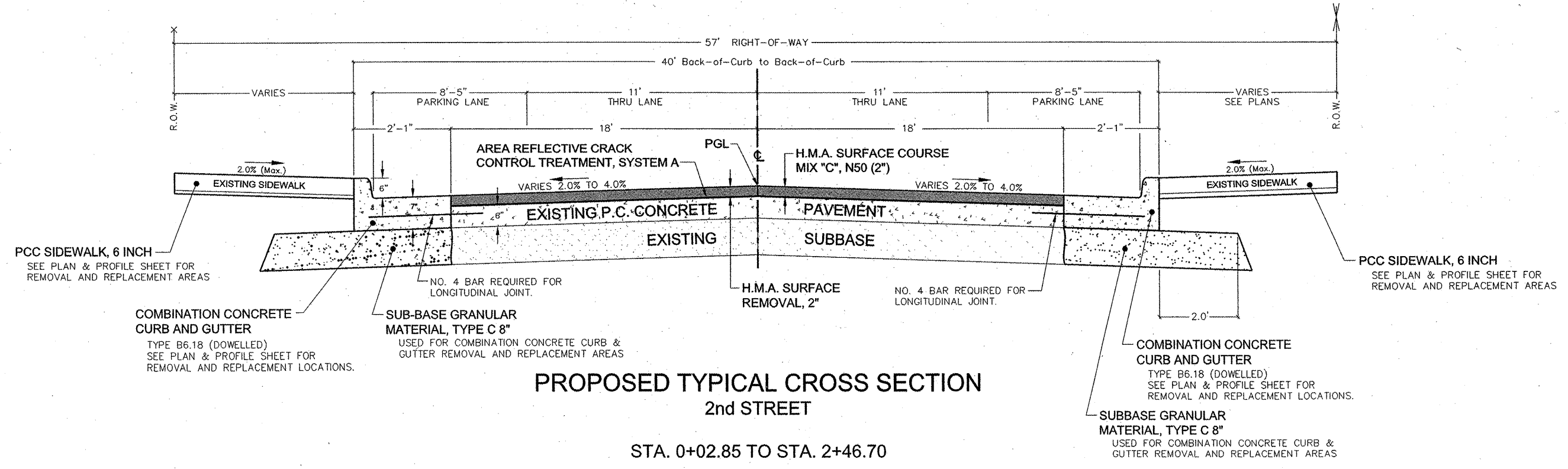


EXISTING TYPICAL CROSS SECTION
2nd STREET

STA. 0+02.85 TO STA. 2+46.70

HOT-MIX ASPHALT REQUIREMENTS

LOCATION	FA ROUTE 5299
MIXTURE USE	SURFACE
AC/PG	PG 64-22
DESIGN AIR VOIDS	4.0% @ NDES = 50
MIX COMP	IL - 9.5
FRICTION AG	MIX C



PROPOSED TYPICAL CROSS SECTION
2nd STREET

STA. 0+02.85 TO STA. 2+46.70

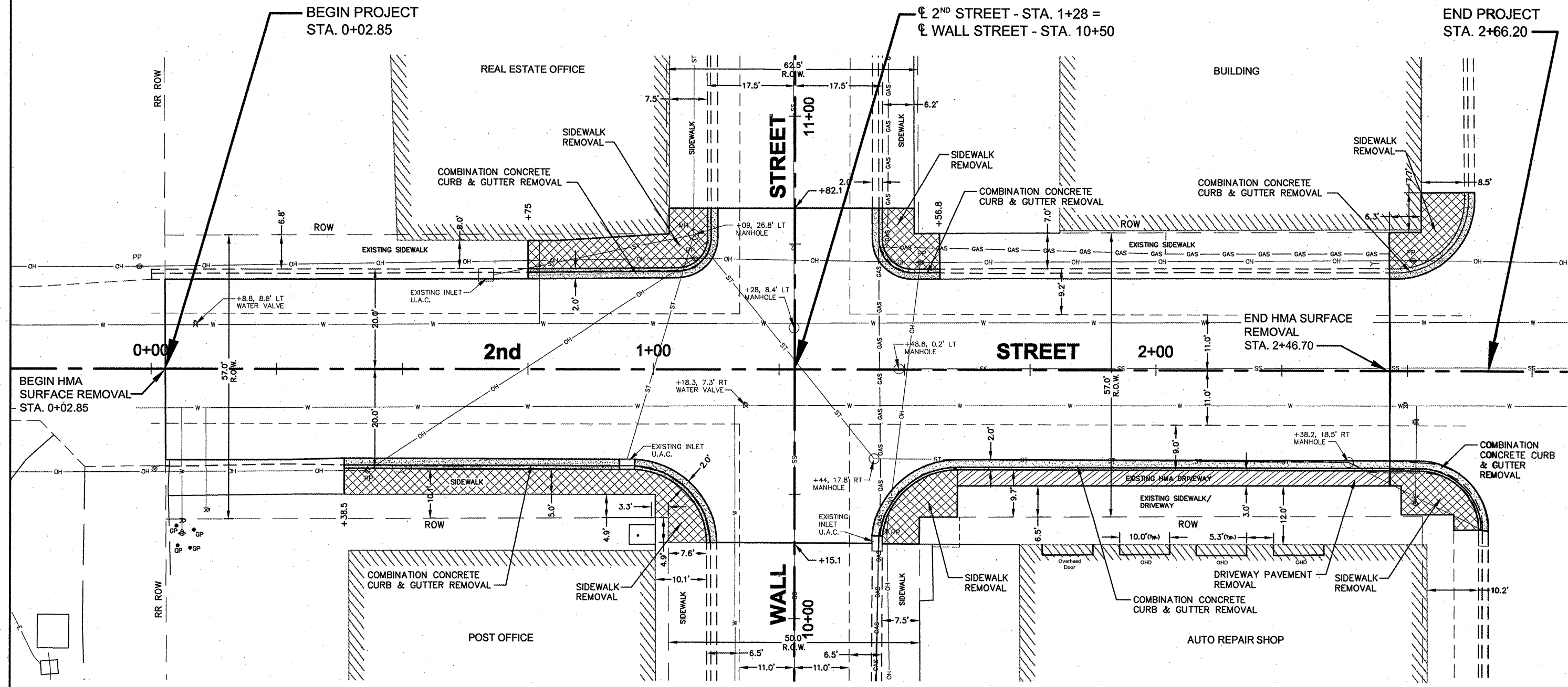
DESIGNED - DJH	REVISED: 11/02/2009
DRAWN - DJH	REVISED
CHECKED -	REVISED

WHKS & CO. SPRINGFIELD, IL
EAST DUBUQUE, IL
DESIGN FIRM #184001036

STATE OF ILLINOIS
DEPARTMENT OF TRANSPORTATION

TYPICAL SECTIONS
SCALE: N/A SHEET NO. 1 OF 1 SHEETS STA. TO STA.

F.A.U. RTE.	SECTION	COUNTY	TOTAL SHEETS	SHEET NO.
5299	09-00034-00-RS	JO DAVIESS	8	5
CONTRACT NO. 85502				



- SIDEWALK REMOVAL
- DRIVEWAY PAVEMENT REMOVAL
- COMBINATION CONCRETE CURB & GUTTER REMOVAL
- HMA SURFACE REMOVAL, 2"

U.A.C. - USE AS CONSTRUCTED

DESIGNED - DJH	REVISED
DRAWN - DJH	REVISED
CHECKED -	REVISED

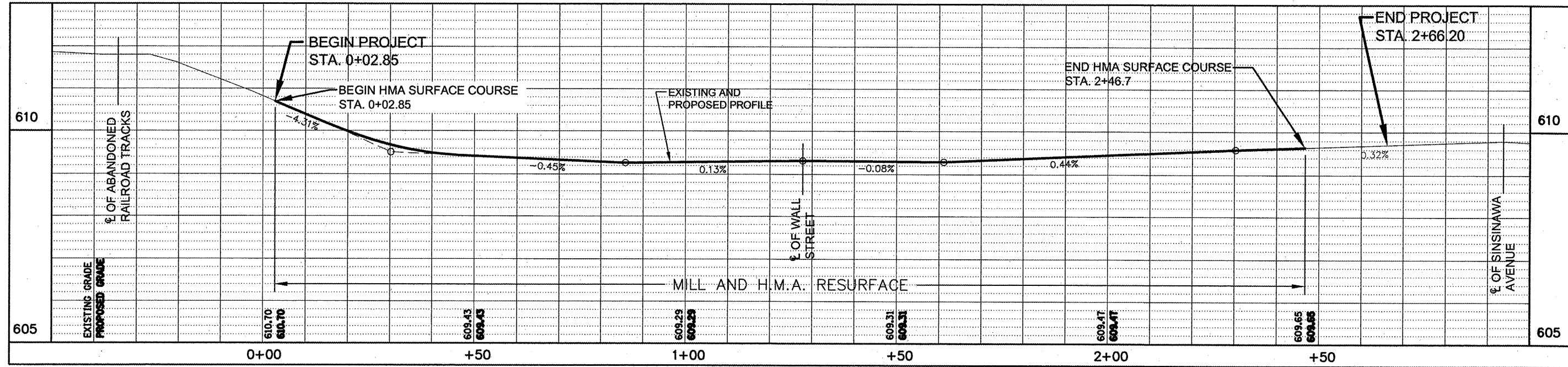
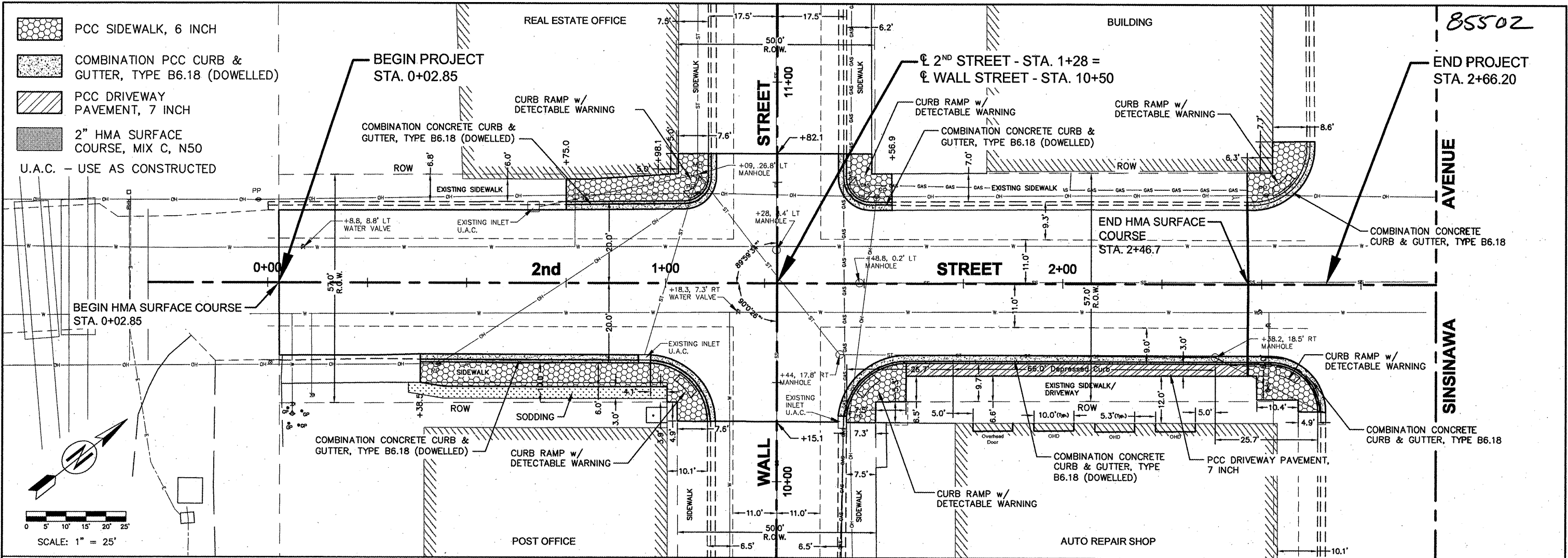
Date: Fri, October 23, 2009 - 2:18pm
 Filename: C:\Dept\3\7230 - East DBO 2nd STREET\LD0\East DBO 2nd Street.dwg

WHKS & CO.
 SPRINGFIELD, IL
 EAST DUBUQUE, IL
 DESIGN FIRM #184001036

STATE OF ILLINOIS
DEPARTMENT OF TRANSPORTATION

REMOVALS
 SCALE: 1" = 20' SHEET NO. 1 OF 1 SHEETS STA. 0+02.85 TO STA. 2+46.20

F.A.U. RTE.	SECTION	COUNTY	TOTAL SHEETS	SHEET NO.
5299	09-00034-00-RS	JO DAVIESS	8	6
CONTRACT NO. 85502				
<small>FED. ROAD DIST. NO. 2 ILLINOIS FED. AID PROJECT</small>				



DESIGNED - DJH	REVISED
DRAWN - DJH	REVISED
CHECKED -	REVISED

WHKS & CO.
 SPRINGFIELD, IL
 EAST DUBUQUE, IL
 DESIGN FIRM #184001036

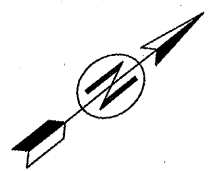
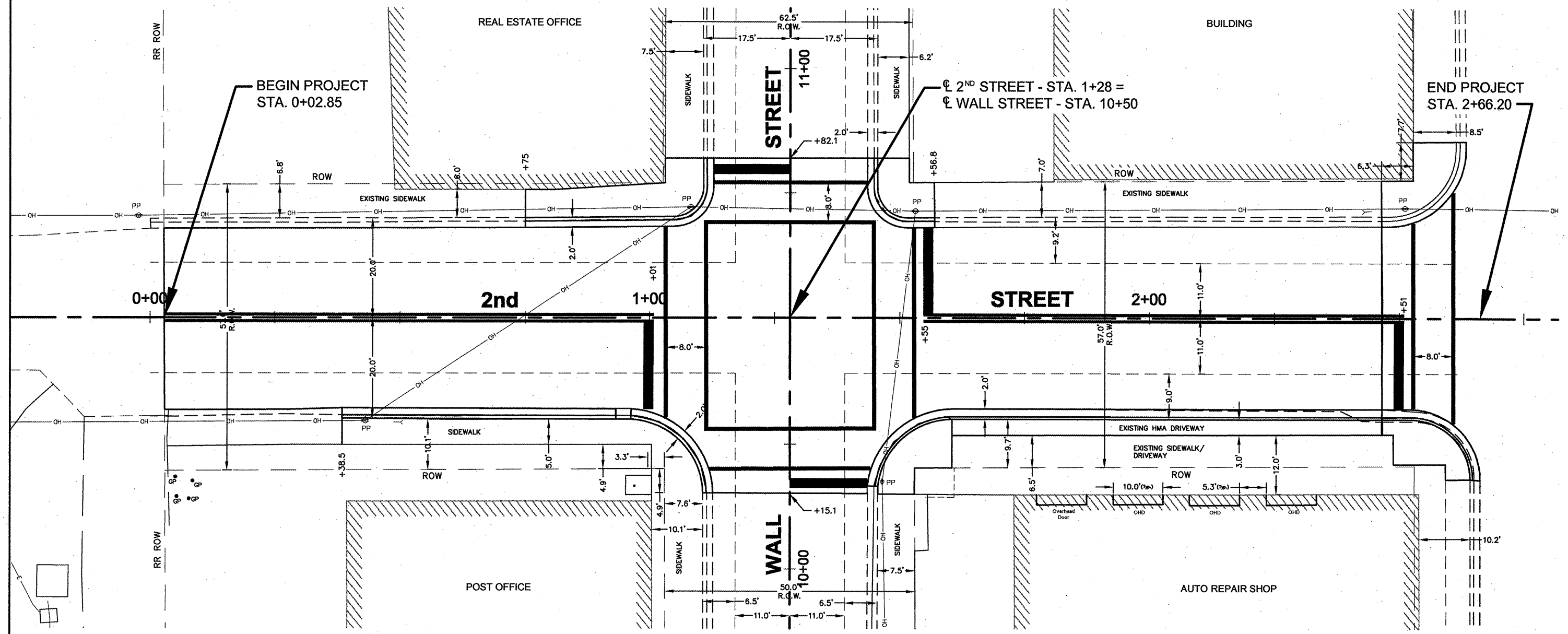
STATE OF ILLINOIS
 DEPARTMENT OF TRANSPORTATION

PLAN AND PROFILE

F.A.U. RTE. 5299	SECTION 09-00034-00-RS	COUNTY JO DAVIESS	TOTAL SHEETS 8	SHEET NO. 7
CONTRACT NO. 85502				
FED. ROAD DIST. NO. 2 ILLINOIS FED. AID PROJECT				

Date: Fri, October 23, 2009 - 2:04pm
 Filename: C:\Dept\3\7230 - East DBQ 2nd STREET\LDY\East DBQ 2nd Street.dwg

SCALE: 1" = 25' SHEET NO. 1 OF 1 SHEETS STA. 0+02.85 TO STA. 2+66.20



SCALE: 1" = 20'

- PAINT PAVEMENT MARKING - LINE 4" CENTERLINE MARKING
- PAINT PAVEMENT MARKING - LINE 24" STOP LINE
- PAINT PAVEMENT MARKING - LINE 6" CROSSWALK

DESIGNED - DJH	REVISED
DRAWN - DJH	REVISED
CHECKED -	REVISED

WHKS & CO. SPRINGFIELD, IL
EAST DUBUQUE, IL
DESIGN FIRM #184001036

STATE OF ILLINOIS
DEPARTMENT OF TRANSPORTATION

PAINT PAVEMENT MARKINGS

SCALE: 1" = 20' SHEET NO. 1 OF 1 SHEETS STA. 0+02.85 TO STA. 2+66.20

F.A.U. RTE.	SECTION	COUNTY	TOTAL SHEETS	SHEET NO.
5299	09-00034-00-RS	JO DAVIESS	8	8
CONTRACT NO. 85502				

Date: Fri, October 23, 2009 - 2:18pm Filename: C:\Dept\J\7230 - East DBQ 2nd STREET\LD0\East DBQ 2nd Street.dwg

FED. ROAD DIST. NO. 2 ILLINOIS FED. AID PROJECT