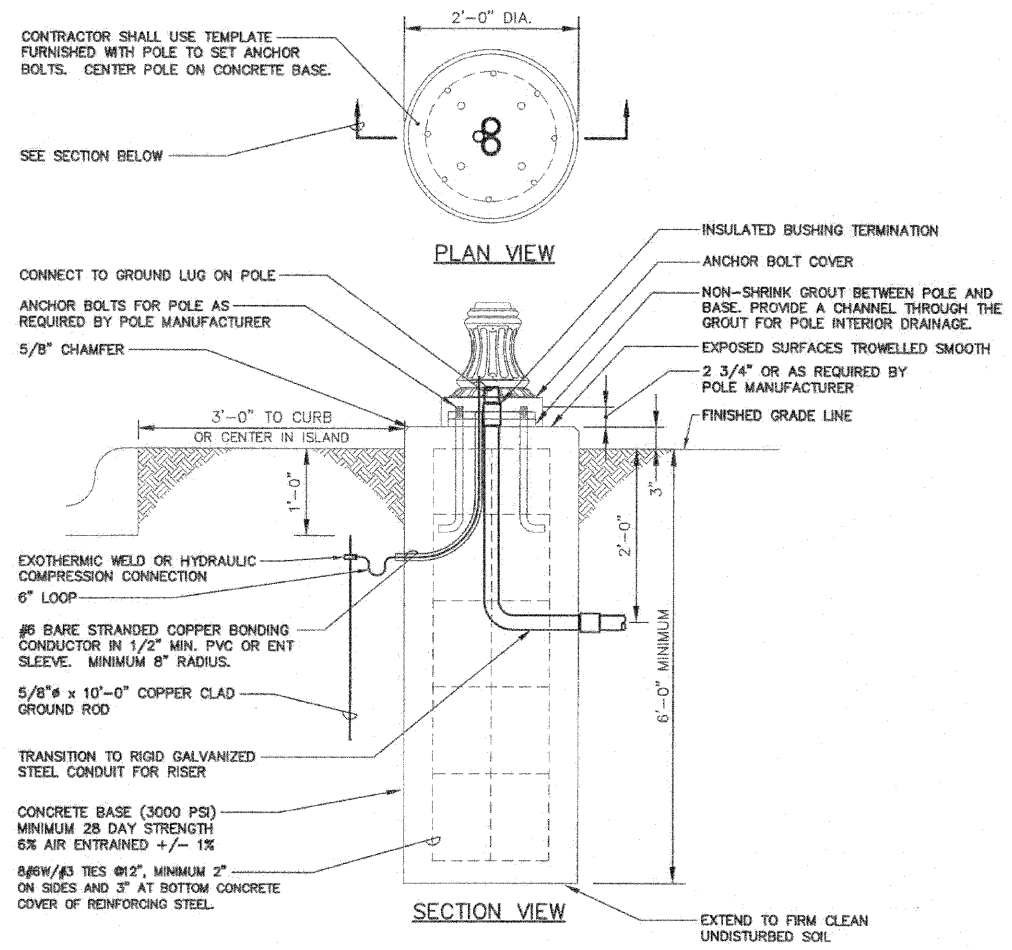
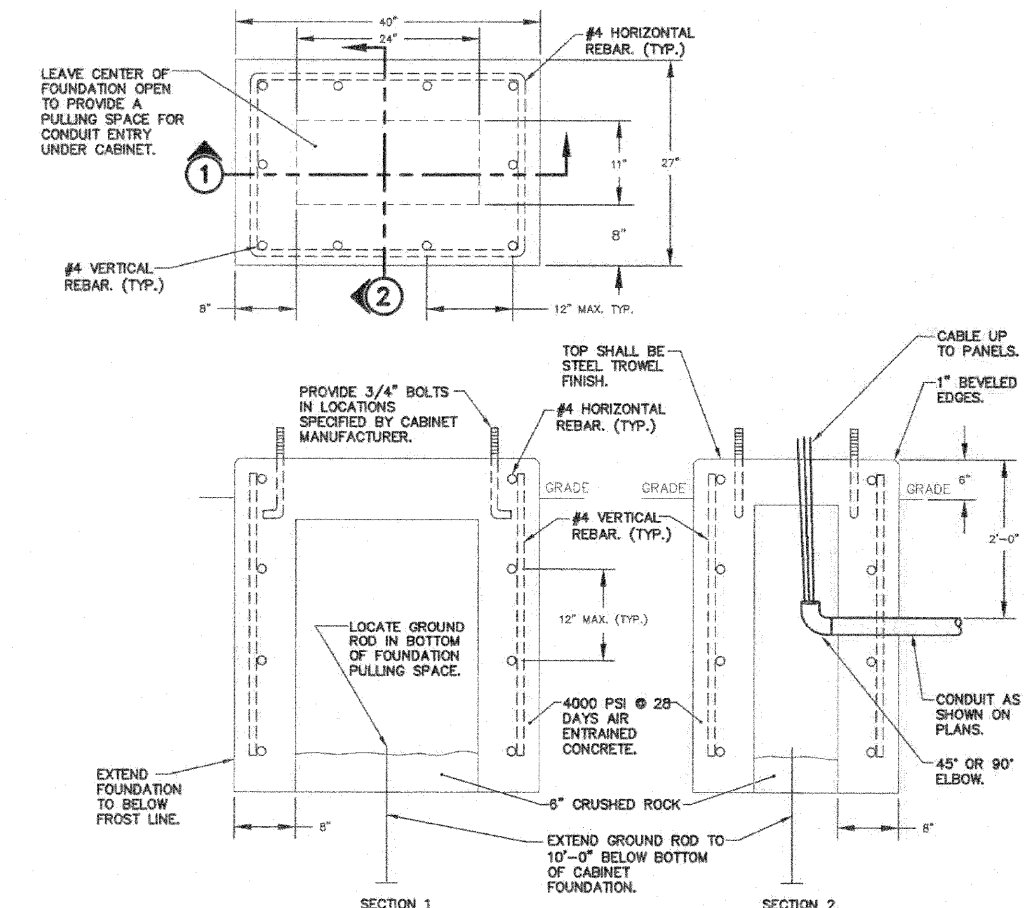


ROUTE NO.	SECTION	COUNTY	TOTAL SHEETS	SHEET NO.
1	*	LEE	35	31
FED. ROAD DIST. NO. 7		ILLINOIS	FED. AID PROJECT	

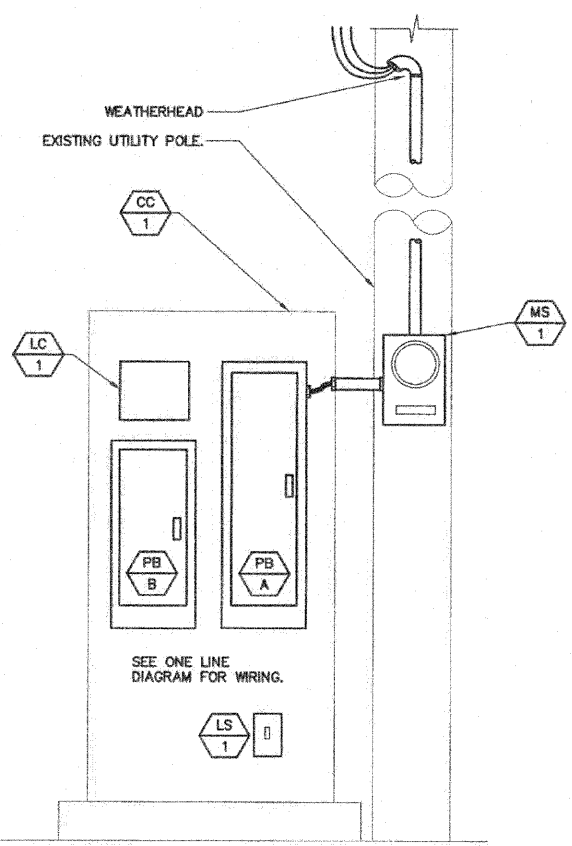
\*SECTION 03-00160-00-PV Contract #85503



**POLE BASE DETAIL - 1 LAMP** 1  
NO SCALE

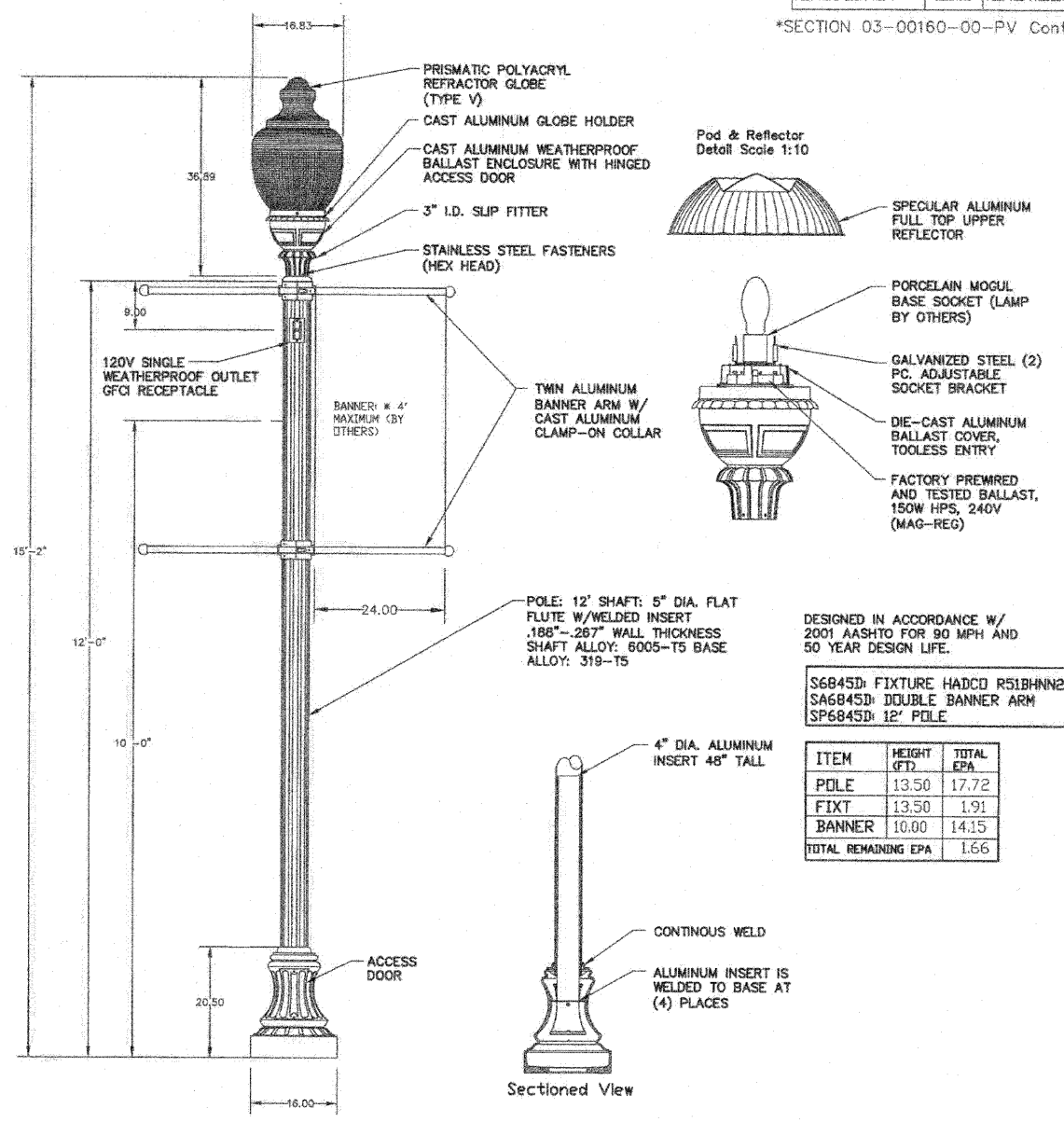


**(CC/1) FOUNDATION DETAIL** 4  
NO SCALE



**(CC/1) ELEVATION** 2  
NO SCALE

LOCATED ON EXISTING POLE. SEE DRAWING 27 FOR LOCATION. PROVIDE 2#12 & 1#12 GND IN 1" C. UNDERGROUND TO POLE WITH (PC/1). ROUTE CONDUIT AND WIRING UP POLE TO (PC/1).



**FIXTURE F1 DETAIL** 3  
NO SCALE

S6845D: FIXTURE HADCO R51BHNN2ITND150SG  
SA6845D: DOUBLE BANNER ARM  
SP6845D: 12' POLE

ITEM	HEIGHT (FT)	TOTAL EPA
POLE	13.50	17.72
FIXT	13.50	1.91
BANNER	10.00	14.15
TOTAL REMAINING EPA		1.66

**KJWW ENGINEERING CONSULTANTS**  
Illinois Professional Design Firm No.

Sheets 27-33 Only  
For Electrical Only

DAVID A. HANSHAW  
REGISTERED PROFESSIONAL ENGINEER  
DATE: 09/24/2009

DAVID A. HANSHAW  
ROCK ISLAND, ILLINOIS  
ILLINOIS LICENSED PROFESSIONAL ENGINEER NO. 062-050805  
EXPIRES: 11/30/2011

**DETAILS & ELEVATION**

HENNEPIN AVE.  
SECTION 03-00160-00-PV  
CITY OF DIXON

**KJWW ENGINEERING CONSULTANTS**  
Experience you can build on™

823 25th AVENUE  
ROCK ISLAND, IL 61201  
309.786.0673  
FAX: 309.786.5967  
www.kjww.com

Date:  
09/24/2009

Job:  
2090205