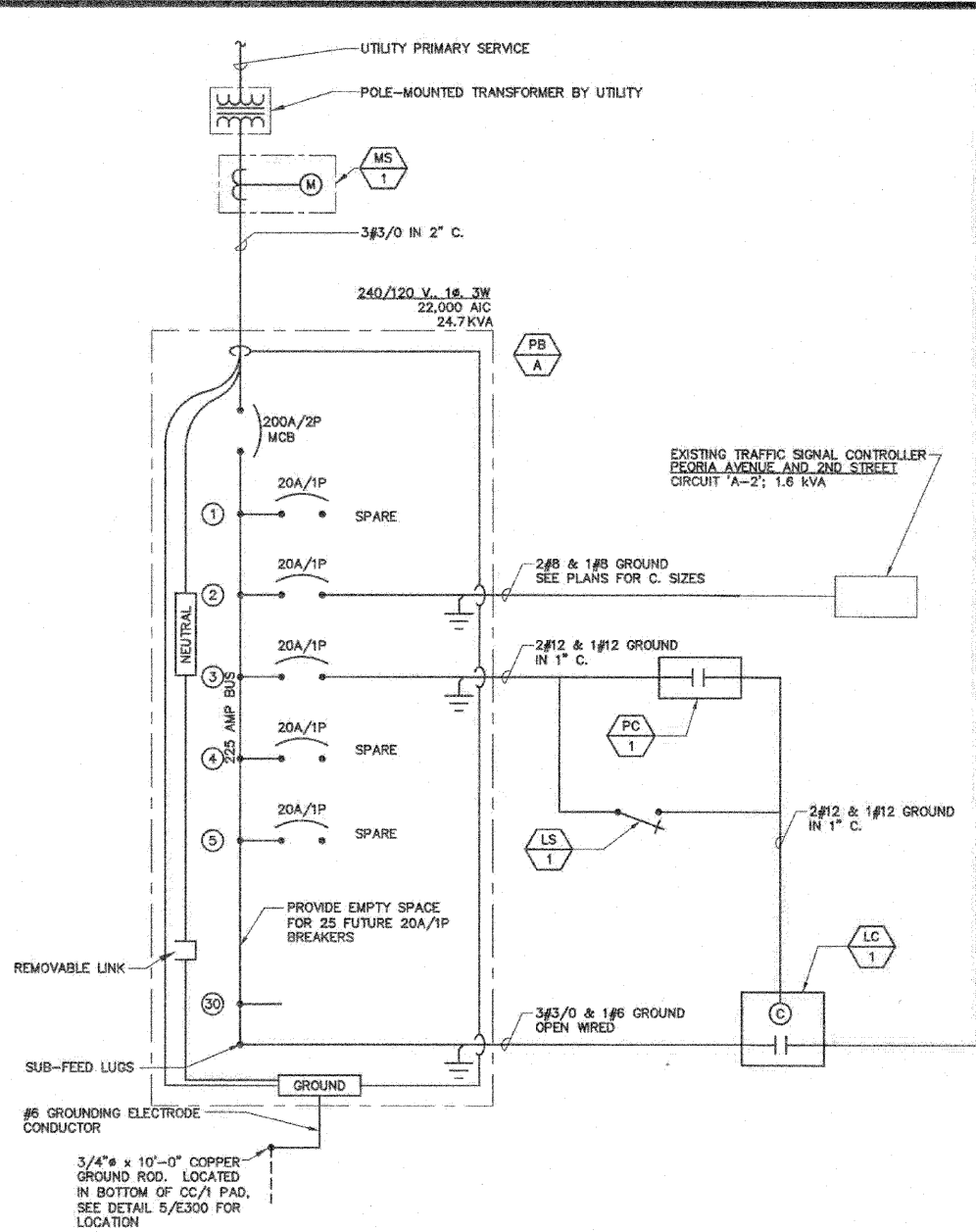


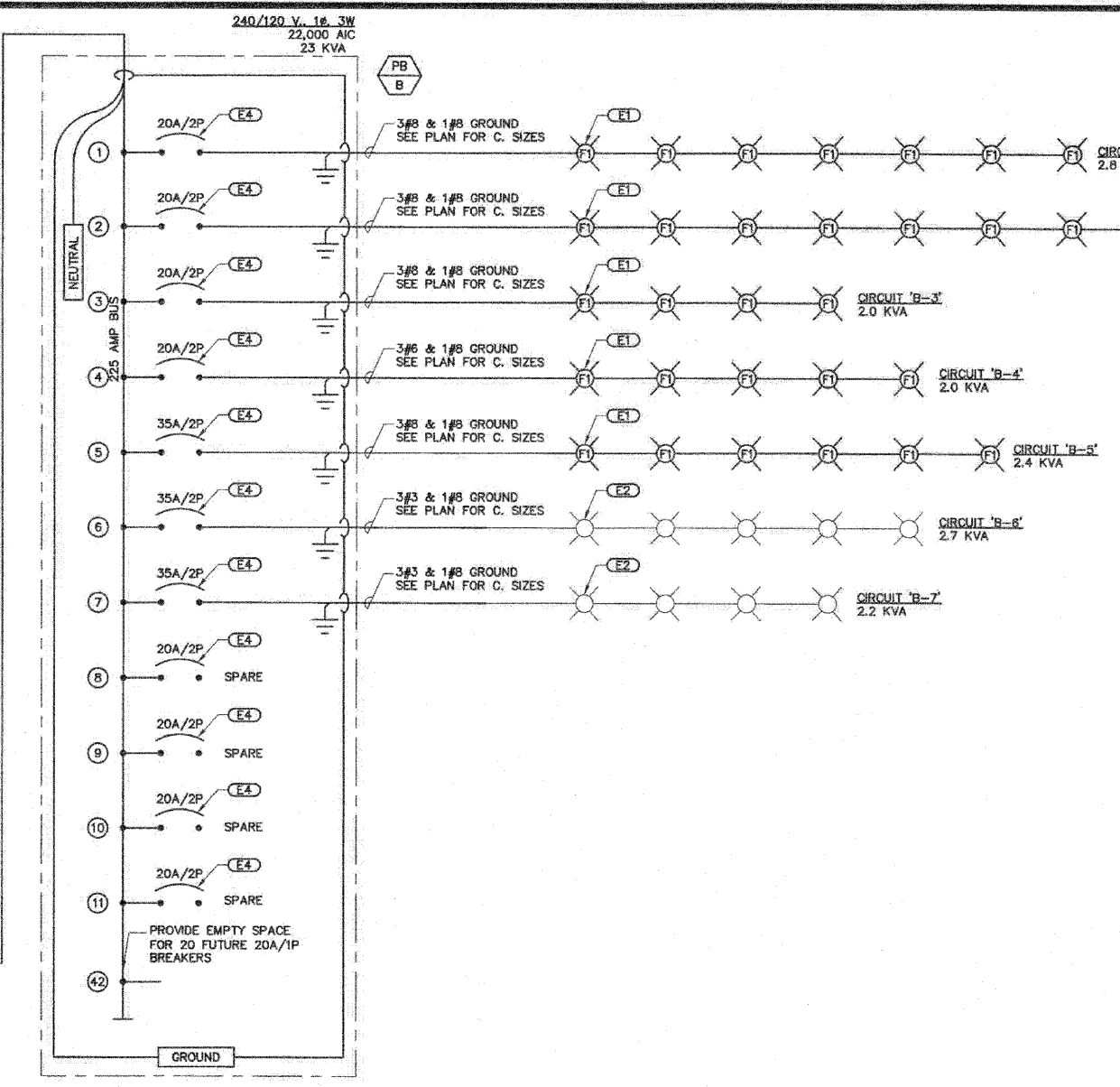
ROUTE NO.	SECTION	COUNTY	TOTAL SHEETS	SHEET NO.
	#	LEE	35	32
FED. ROAD DIST. NO. 7				
BALANCE				
FED. AID PROJECT				

\*SECTION 03-00160-00-PV Contract #85503



**ONE-LINE AND CONTROLS DIAGRAM** 1  
NO SCALE

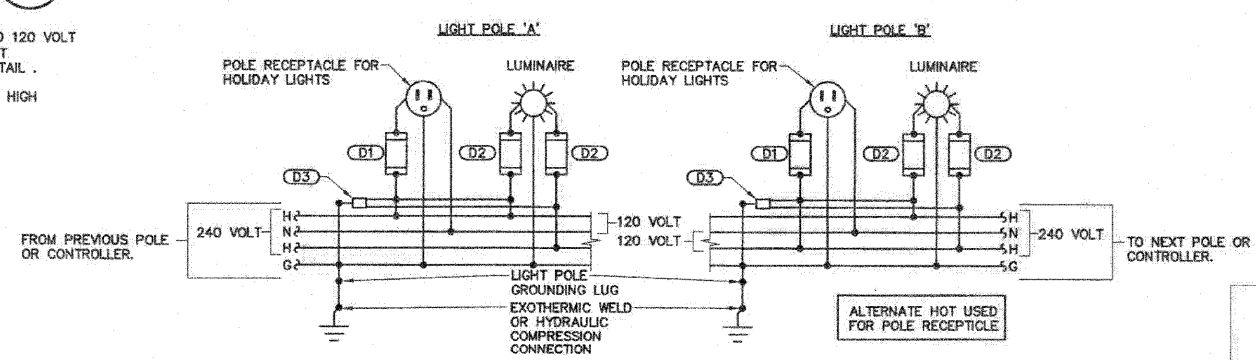
- KEYNOTES:**
- (E1) SYMBOL REPRESENTS CONNECTION TO (1) 1-HEADED 150 WATT, 240 VOLT LUMINAIRE AND 120 VOLT GF WATERPROOF OUTLET UNLESS OTHERWISE NOTED (QUANTITY SHOWN) (TYP. OF F1). TEXT REPRESENTS FIXTURE TYPE, SEE SHEET 31 FOR FIXTURE DETAILS. SEE 32 FOR WIRING DETAIL.
  - (E2) CONNECTION TO EXISTING LIGHTING CIRCUIT COMPOSED ENTIRELY OF 400 WATT, 240 VOLT HIGH PRESSURE SODIUM, COBRA HEAD LUMINAIRES (QUANTITY SHOWN).
  - (E3) NOT USED.
  - (E4) USE BREAKER RATED FOR H.I.D. LIGHTING



- GENERAL ELECTRICAL NOTES:**
- "1/E300" INDICATES DETAIL NUMBER/SHEET NUMBER.
  - "(SB/1)" INDICATES MATERIAL LIST ITEM IN HEX SYMBOL.
  - "(E)" INDICATES KEYED NOTE USED TO DESCRIBE ADDITIONAL INFORMATION OF WORK REQUIRED, SPECIFIC TO THE SHEET AND/OR DETAIL WITH WHICH IT IS SHOWN.
  - ALL ELECTRICAL CONDUCTORS SHALL BE COPPER.
  - SHOWN BETWEEN LUMINAIRES DESIGNATES QUANTITY AND PURPOSE OF WIRES CONTAINED IN EACH NOTED CONDUIT.  
GROUND WIRE  
NEUTRAL WIRE  
PHASE WIRE
  - ABBREVIATION KEY:  
E.C. ELECTRICAL CONTRACTOR  
G.C. GENERAL CONTRACTOR  
C CONDUIT  
TYP TYPICAL
  - REFER TO MATERIAL LIST AND SPECIFICATIONS FOR FULL DESCRIPTION AND MANUFACTURERS OF ALL DEVICES
  - LINE TYPE KEY:  
NEW WORK BY THIS CONTRACTOR (DARK SOLID LINE)  
NEW WORK UNDERFLOOR OR UNDERGROUND BY THIS CONTRACTOR (DARK LONG DASHED LINE)  
NEW WORK BY OTHERS AND/OR EXISTING TO REMAIN (LIGHT SOLID LINE)  
EXISTING TO BE REMOVED BY THIS CONTRACTOR (DARK SHORT DASHED LINE)

- ELECTRICAL INSTALLATION NOTES:**
- THE COMPLETE INSTALLATION SHALL BE IN ACCORDANCE WITH THE ADAAG (AMERICANS WITH DISABILITIES ACT ACCESSIBILITY GUIDELINES).
  - CIRCUIT NUMBERS, SHOWN AS A SUBSCRIPT ON EVERY FIXTURE, ARE FOR CIRCUIT IDENTIFICATION. CIRCUITING SHALL AGREE WITH NUMBERING ON THE PANEL PROVIDED. COMMON NEUTRALS MAY NOT BE USED FOR BRANCH CIRCUITS.
  - ELECTRICAL EQUIPMENT SHALL BE MOUNTED TO AVOID IMPEDANCE OF OPERATION OF AND/OR ACCESS TO ELECTRICAL AND MECHANICAL EQUIPMENT. ALL MOUNTING OF ELECTRICAL GEAR ON EQUIPMENT SUPPLIED BY SUB CONTRACTOR SHALL BE APPROVED IN ADVANCE BY THE PRIME CONTRACTOR.
  - CONTRACTOR SHALL INSTALL AT EACH SERVICE ENTRANCE A PERMANENT DIRECTORY ACCORDING TO ARTICLE 230, SECTION A OF THE NATIONAL ELECTRIC CODE.
  - ALL WELDING SHALL BE ACCORDING TO AMERICAN WELDING SOCIETY STANDARDS. CONTRACTOR SHALL FURNISH TO THE ARCHITECT/ENGINEER CERTIFICATES QUALIFYING OF EACH WELDER, PRIOR TO START OF WORK. THE ARCHITECT/ENGINEER RESERVES THE RIGHT TO REQUIRE QUALIFYING DEMONSTRATION, AT THE CONTRACTOR'S EXPENSE, OF ANY WELDERS ASSIGNED TO THE JOB.

- ONE-LINE DIAGRAM NOTES:**
- AIC RATINGS LISTED FOR EQUIPMENT ARE MINIMUM REQUIREMENTS FOR BUS BRACING AND DEVICE RATING. ALL EQUIPMENT SHALL BE FULLY RATED UNLESS SPECIFICALLY NOTED AS SERIES RATED.
  - INDICATES DIRECT CONNECTION OF GROUND CONDUCTOR TO GROUND BUS. SUBSCRIPT "1" INDICATES DIRECT CONNECTION OF ISOLATED GROUND CONDUCTOR TO ISOLATED GROUND BUS.
  - INDICATES O.Z. GEDNEY OR EQUAL GROUND BUSHING BONDED TO GROUND BUS WITH CONDUCTOR SIZED TO MAXIMUM FEEDER GROUND CAPACITY.
  - ALL WIRE SHALL BE TYPE 'THHN' ABOVE GRADE. FEEDERS LOCATED BELOW FLOOR SLAB OR UNDERGROUND SHALL BE TYPE 'THWN'.
  - ALL CONDUIT LOCATED UNDERGROUND SHALL BE PVC SCHEDULE 40 UNLESS NOTED OTHERWISE.



**FIXTURE F1 WIRING DETAIL** 2  
NO SCALE

- KEYNOTES:**
- (D1) 20A FUSE FOR RECEPTACLE. ONE (1) PER LIGHT POLE AS SHOWN. SHALL MEET ILLINOIS DEPT. OF TRANSPORTATION STANDARDS FOR ROAD AND BRIDGE CONSTRUCTION.
  - (D2) 10A FUSE FOR LUMINAIRE. TWO (2) PER LIGHT POLE AS SHOWN. SHALL MEET ILLINOIS DEPT. OF TRANSPORTATION STANDARDS FOR ROAD AND BRIDGE CONSTRUCTION.
  - (D3) SURGE SUPPRESSOR PER POLE. SHALL MEET ILLINOIS DEPT. OF TRANSPORTATION STANDARDS FOR ROAD AND BRIDGE CONSTRUCTION.

**KJWW ENGINEERING CONSULTANTS**  
Illinois Professional Design Firm No.  
Sheets 27-33 Only For Electrical Only  
DAVID A. HANSHAW  
REGISTERED PROFESSIONAL ENGINEER  
STATE OF ILLINOIS  
DAVID A. HANSHAW  
ROCK ISLAND, ILLINOIS  
ILLINOIS LICENSED PROFESSIONAL ENGINEER NO. 062.050805  
EXPIRES: 11/30/2011

**ONE-LINE & DETAIL**  
**HENNEPIN AVE.**  
**SECTION 03-00160-00-PV**  
**CITY OF DIXON**

**KJWW ENGINEERING CONSULTANTS**  
Experience you can build on.  
623 28th AVENUE  
ROCK ISLAND, IL 61201  
309.788.0173  
FAX: 309.786.5967  
www.kjww.com KJWW #09.0225.00  
STRUCTURAL | MECHANICAL | ELECTRICAL | TECHNOLOGY

Date: 09/24/2009  
Job: 2090205  
32