

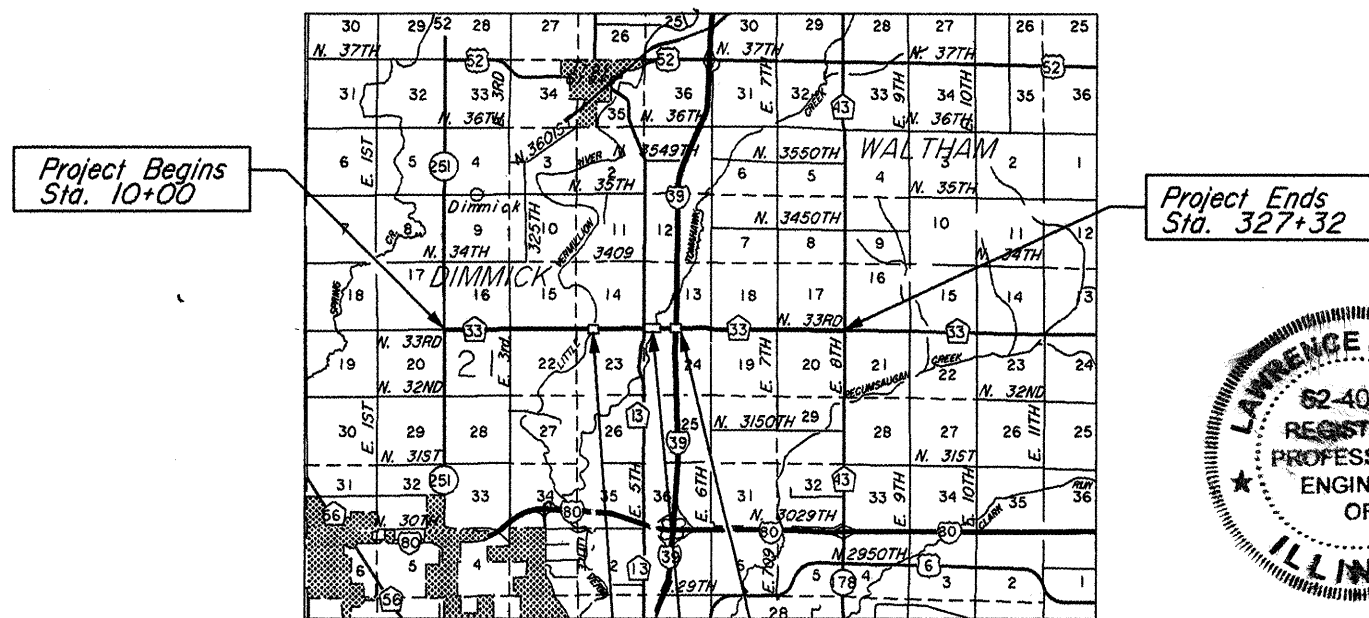
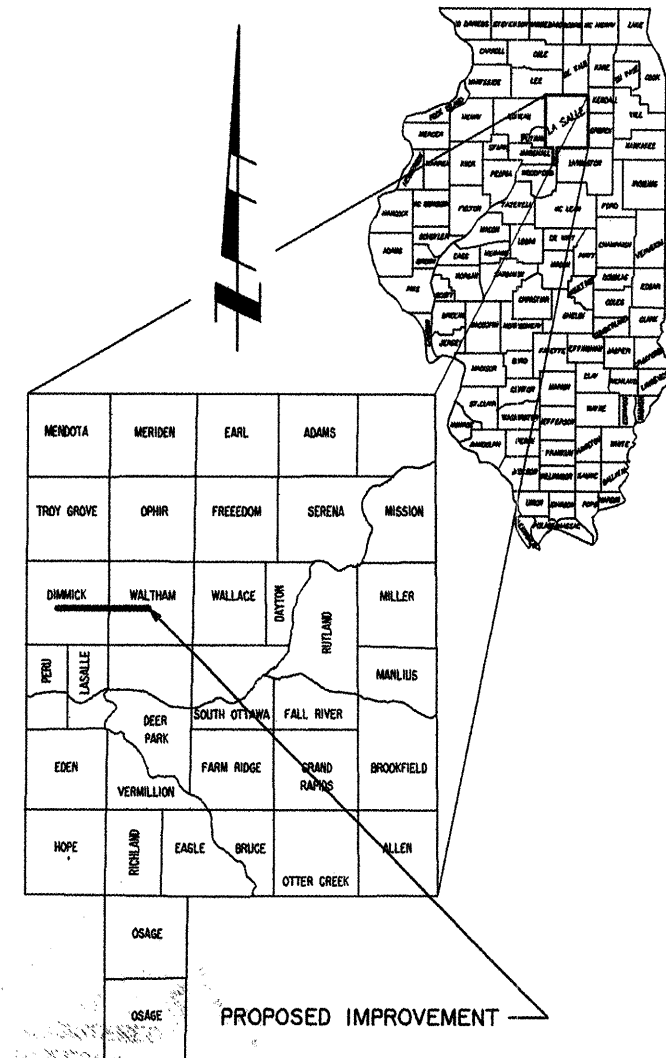
INDEX OF SHEETS

1. COVER SHEET
2. TYPICAL SECTIONS, SUMMARY OF QUANTITIES, AND GENERAL NOTES
3. QUANTITY SCHEDULES
4. DETAILS

STANDARDS

- 701301-03 TYPICAL APPLICATION OF TRAFFIC CONTROL DEVICES
- 701306-02 TYPICAL APPLICATION OF TRAFFIC CONTROL DEVICES
- 701311-03 TYPICAL APPLICATION OF TRAFFIC CONTROL DEVICES
- 701901-01 TYPICAL APPLICATION OF TRAFFIC CONTROL DEVICES
- BLR 23-3 TRAFFIC BARRIER TERMINAL TYPE I
- BLR 26-2 STEEL PLATE BEAM GUARDRAIL 700mm (27 1/2") HEIGHT

STATE OF ILLINOIS
DEPARTMENT OF TRANSPORTATION
LASALLE COUNTY
PLANS FOR PROPOSED
FEDERAL-AID LAPP PROJECT
AMERICAN RECOVERY AND REINVESTMENT ACT
F.A.S. ROUTE 1365 SECTION II-00254-00-RS
PROJECTARA-1365(II2) JOB NO. C-93-079-09



PREVIOUS SECTIONS

112G, 112A, 112Q, 113G, 113A, 113Q, 1128113Q-1,
79-00220-00-RS, 91-00254-00-RS



THESE PLANS WERE PREPARED BY A FULL-TIME MEMBER OF MY STAFF WORKING UNDER MY PERSONAL SUPERVISION

10/14/2009
DATED

Lawrence J. Kinzer

LAWRENCE J. KINZER
LASALLE COUNTY ENGINEER
I.R.P.E. NO. 62-40162
EXP. DATE 11-30-09

THE ACCEPTANCE OF THIS PROJECT IS BASED ON THE MINIMUM DESIGN CRITERIA FOR A FEDERAL AID LAPP

PASSED: October 21, 2009
Ken... [Signature]
DISTRICT ENGINEER OF ROADS AND STREETS

APPROVED: October 21, 2009
George... [Signature]
DEPUTY DIRECTOR REGION 2 ENGINEER

STATE OF ILLINOIS
DEPARTMENT OF TRANSPORTATION

GROSS LENGTH: 31,732 FT. = 6.009 MI.

OMISSIONS: STA.119+16 TO STA.136+66 = 1,750.00 FOOT (0.3314 MI.)
OMISSIONS: STA.168+77 TO STA.181+27 = 1,250.00 FOOT (0.2367 MI.)
OMISSIONS: STA.192+55 TO STA.195+10 = 255.00 FOOT (0.04830 MI.)

NET LENGTH: 28,473 FT. = 5.393 MI.

CALL JULIE
48 Hours Before You Dig
1-800-892-0123

CONTRACT NUMBER 87389