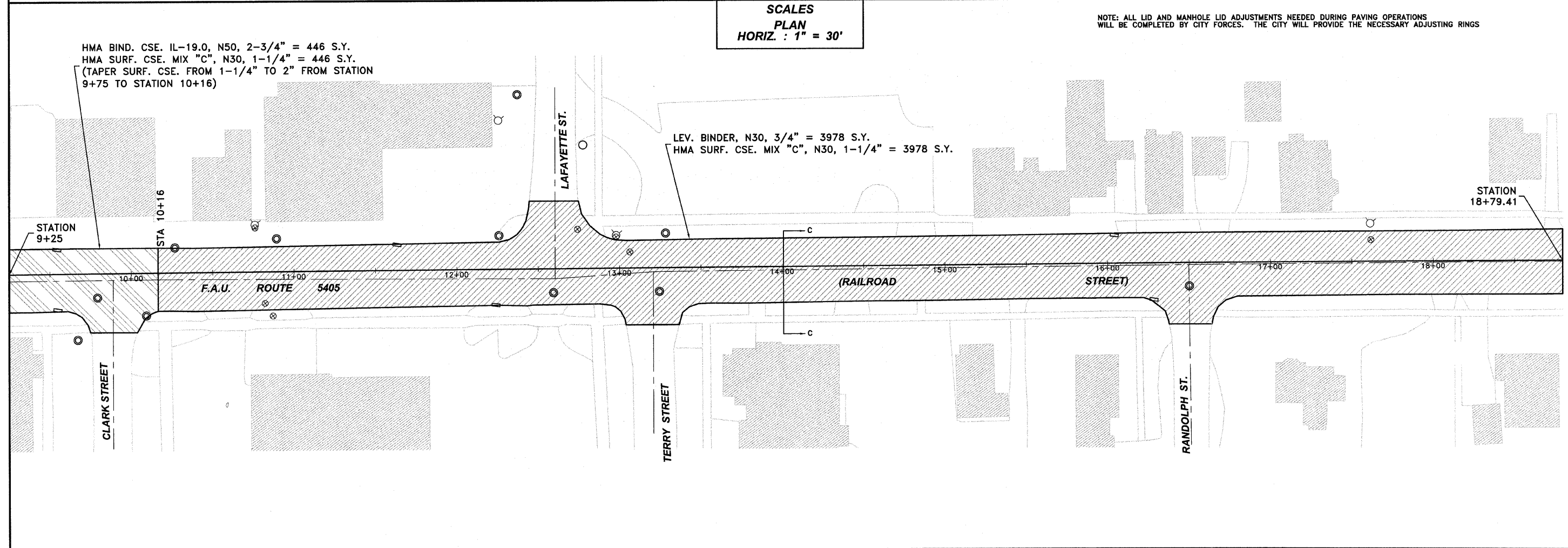
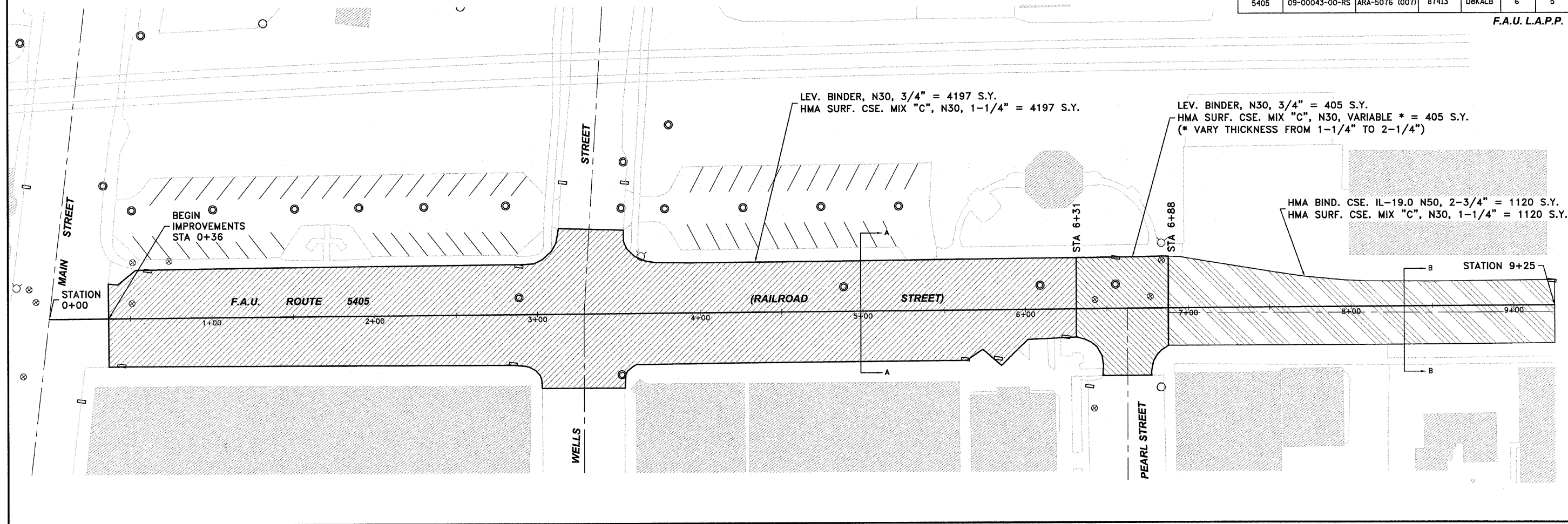


F.A.U. ROUTE NO.	SECTION	ILLINOIS PROJECT	CONTRACT NO.	COUNTY	TOTAL SHEETS	SHEET NUMBER
5405	09-00043-00-RS	ARA-5076 (007)	87413	DeKALB	6	5

F.A.U. L.A.P.P.



SCALES
PLAN
HORIZ. : 1" = 30'

NOTE: ALL LID AND MANHOLE LID ADJUSTMENTS NEEDED DURING PAVING OPERATIONS WILL BE COMPLETED BY CITY FORCES. THE CITY WILL PROVIDE THE NECESSARY ADJUSTING RINGS

F.A.U. 5405 - RAILROAD STREET
SECTION 09-000-43-00-RS
CITY OF SANDWICH, DEKALB COUNTY

1304 GEMINI CIRCLE
 OTTAWA, IL 61350-1692
 TEL: 815-464-3925
 FAX: 815-464-3925

Etscheid
Duttlinger & Associates Inc.
 Professional Engineers & Land Surveyors

PROFESSIONAL DESIGN FIRM # 184-000711
DATE PLOTTED: OCTOBER 17, 2009
DRAWN BY: M.S.R.
CHECKED BY:
PROJECT NUMBER: 3227.04C
DRAWING FILE: 322704C_STREETPLAN
SHEET NO.
5 OF 6

HOT-MIX ASPHALT RESURFACE PLAN - RAILROAD STREET