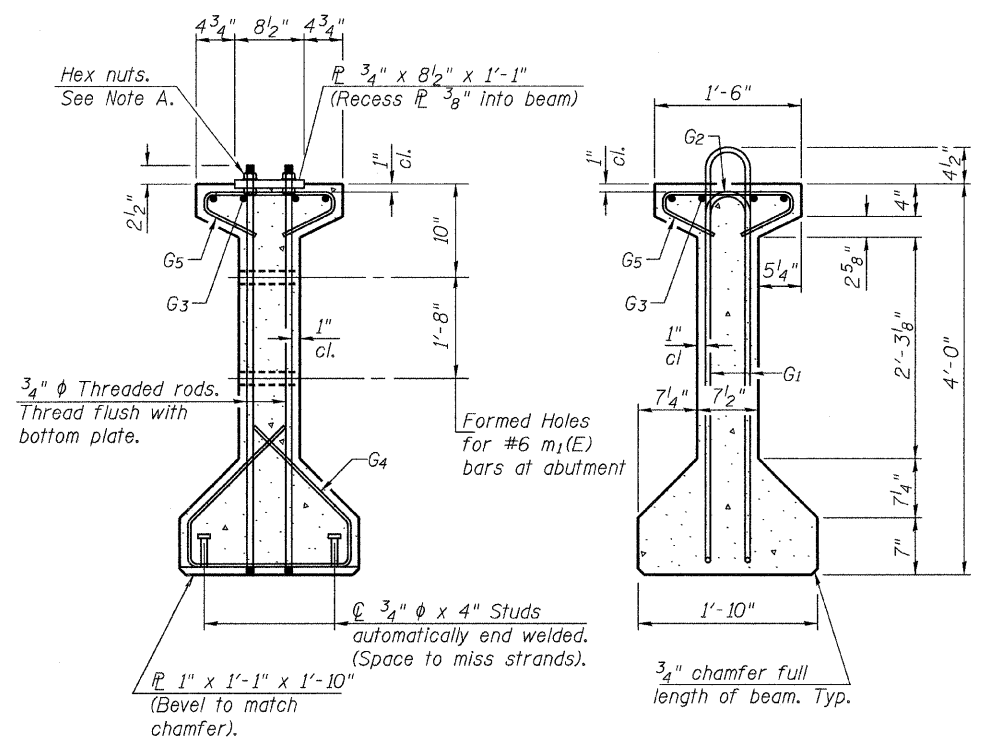


ELEVATION OF BEAM
(Showing reinforcement & dimensions)

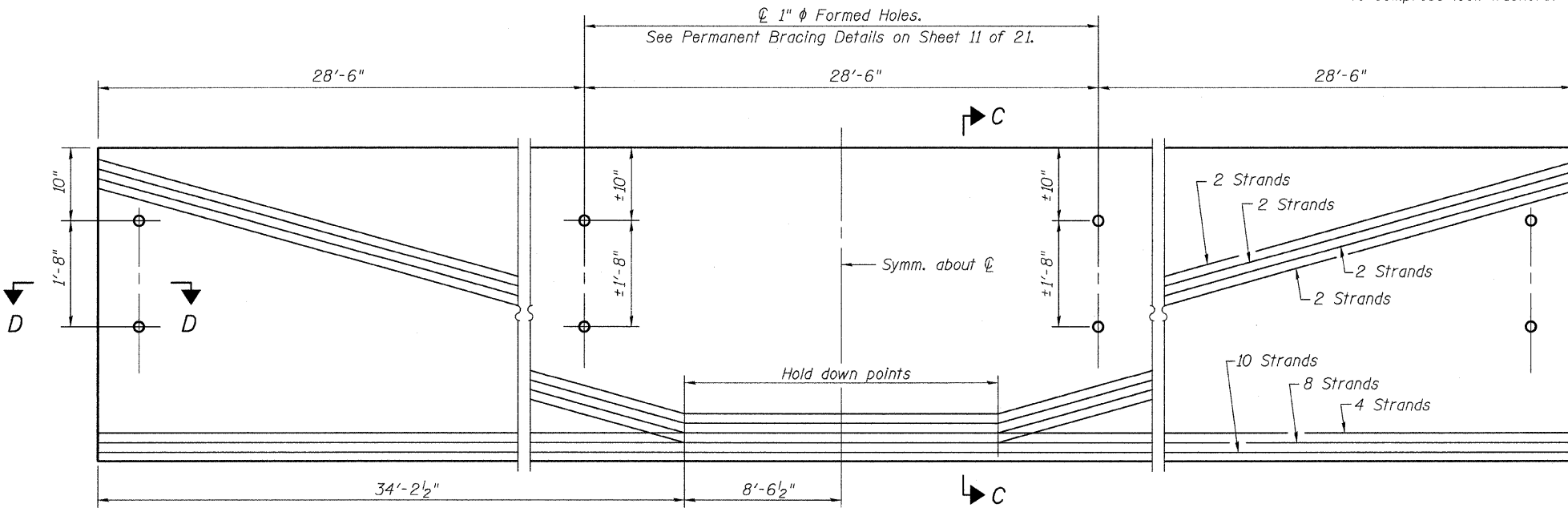
*3 spaces at 3" = 9".
**4-3/4" ϕ threaded dowel rods at 3" cts., Each Face.

Note A:
Hex nuts (top and bottom) with lock washers (top). Only tighten sufficiently to compress lock washers.

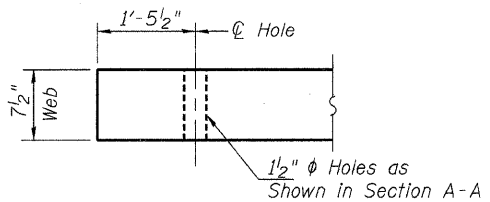


SECTION A-A

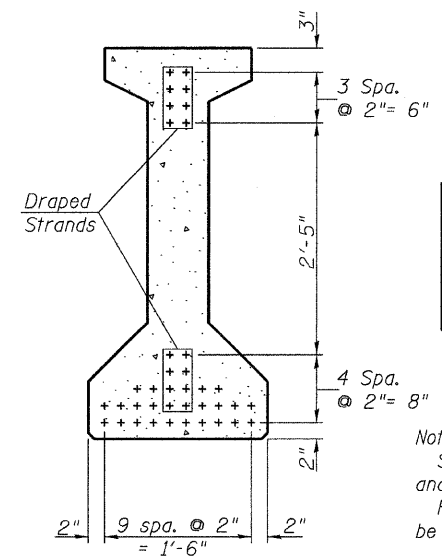
SECTION B-B



ELEVATION OF BEAM
(Showing prestressing steel)



SECTION D-D



SECTION C-C

*****BAR LIST ONE BEAM ONLY**

Bar	No.	Size	Length	Shape
G ₁	133	#4	9'-6"	∩L
G ₂	12	#4	7'-11"	∩
G ₃	12	#7	30'-9"	—
G ₄	38	#3	5'-3"	∩
G ₅	86	#3	2'-9"	∩

***For information only

Notes:
See sheet 12 of 21 for additional details and Bill of Material.
Required release strength, f'ci, shall be 6,000 psi.

48" PPC I-BEAM

SHEET NO. 12 21 SHEETS	ROUTE NO.	SECTION	COUNTY	TOTAL SHEETS	SHEET NO.
	CH 29	10-00649-00-BR	LASALLE	43	19
	S.N. 050-3593		CONTRACT NO. 87430		
FED. ROAD DIST. NO. 7 ILLINOIS			FED. AID PROJECT BRS-0091043		