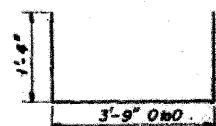
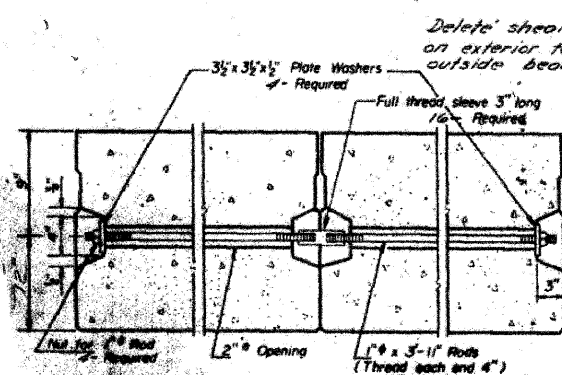


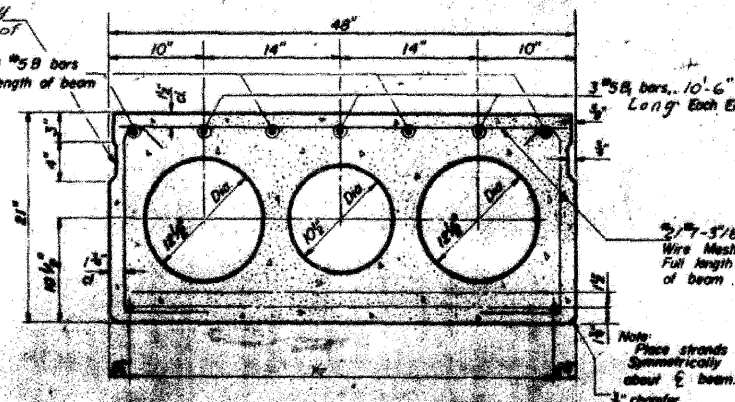
FABRIC BEARING PAD



U BAR

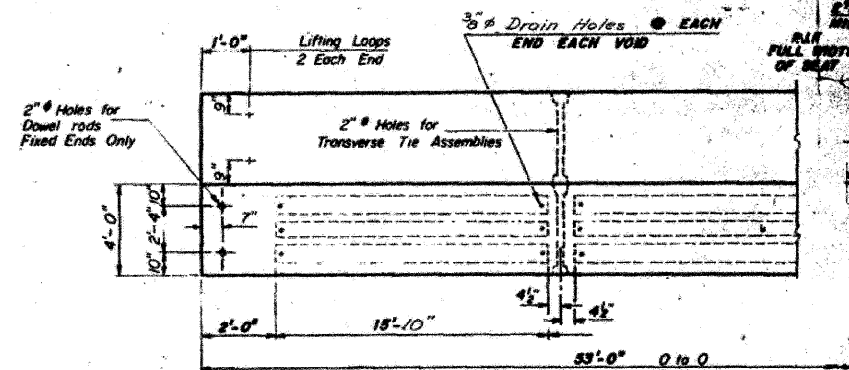


TYPICAL TRANSVERSE TIE ASSEMBLY

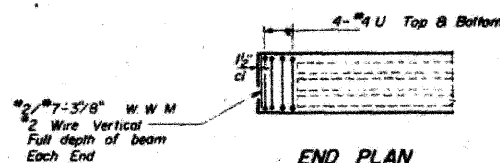


TYPICAL SECTION

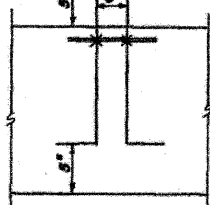
20-#5 Strands, 20# Strand Stressed to 16,000 psi  
 10-Strands #5 10-Strands #5  
 2-STRANDS #5 2-STRANDS #5



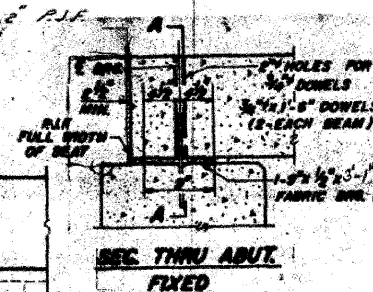
PLAN



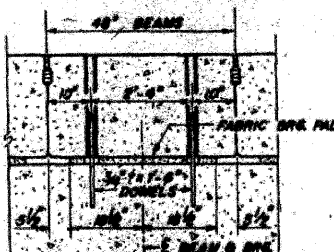
END PLAN



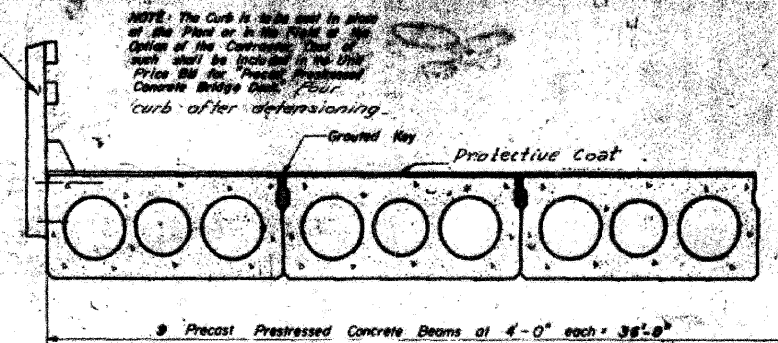
LIFTING LOOP DETAIL



SECTION A-A



SECTION A-A



HALF CROSS SECTION

BILL OF MATERIAL

PRECAST PRESTRESSED CONCRETE BRIDGE DECK	SQ. FT. 1908
Protective Coat	Sq. Yd. 216

GENERAL NOTES

Prestressing steel shall be non-galvanized high strength, stress-relieved 7-wire strand. The nominal diameter shall be 7/8" and the nominal cross-sectional area shall be 0.109 sq. in. LIFTING LOOPS SHALL BE MULTIPLE OF 3 1/8" OR 1/2" STRANDS AT EACH POINT OF LIFTING.

The 1/2" rods in the transverse tie assembly shall be tightened to a snug fit and the threads set. Pockets that receive transverse tie bar on outside beam shall be filled with grout after transverse tie assembly is in place.

Longitudinal shear keys shall be packed with a very dry mix of 1-1 sand and P.C. mortar. After beams have been erected, holes for the dowel anchors shall be drilled into the sub-structure and the anchor dowels shall be grouted in place.

Steel for dowel rods, transverse tie rods, shall be S.A.E. 1020, structural steel A.S.T.M. Designation A-306, Grade 70-80.

After fabrication the transverse tie assemblies (the rods, nuts, washers and sleeves) shall be hot-dipped galvanized in accordance with A.S.T.M. Designation A-153.

Cost of reinforcement and accessories cast into the beam, of bearing pads, and of grouting longitudinal shear keys is included in unit price bid for Precast Prestressed Concrete Bridge Deck.

AN ALTERNATE STRAND PATTERN USING EXTRA HIGH PRESTRESSING STRAND (270 KSI) IS PERMITTED.

DECK DETAIL  
 EGG BAG CREEK  
 SECTION 138-G  
 LASALLE COUNTY  
 STATION 44+70.00

PD-2-5 11-19-65

EXISTING STRUCTURE PLANS

SHEET NO. 5 5 SHEETS	ROUTE NO.	SECTION	COUNTY	TOTAL SHEETS	SHEET NO.
	CH 29	10-00649-00-BR	LASALLE	43	33
	S.N. 050-3593		CONTRACT NO. 87430		
	FED. ROAD DIST. NO. 7 ILLINOIS		FED. AID PROJECT BRS-0099(043)		