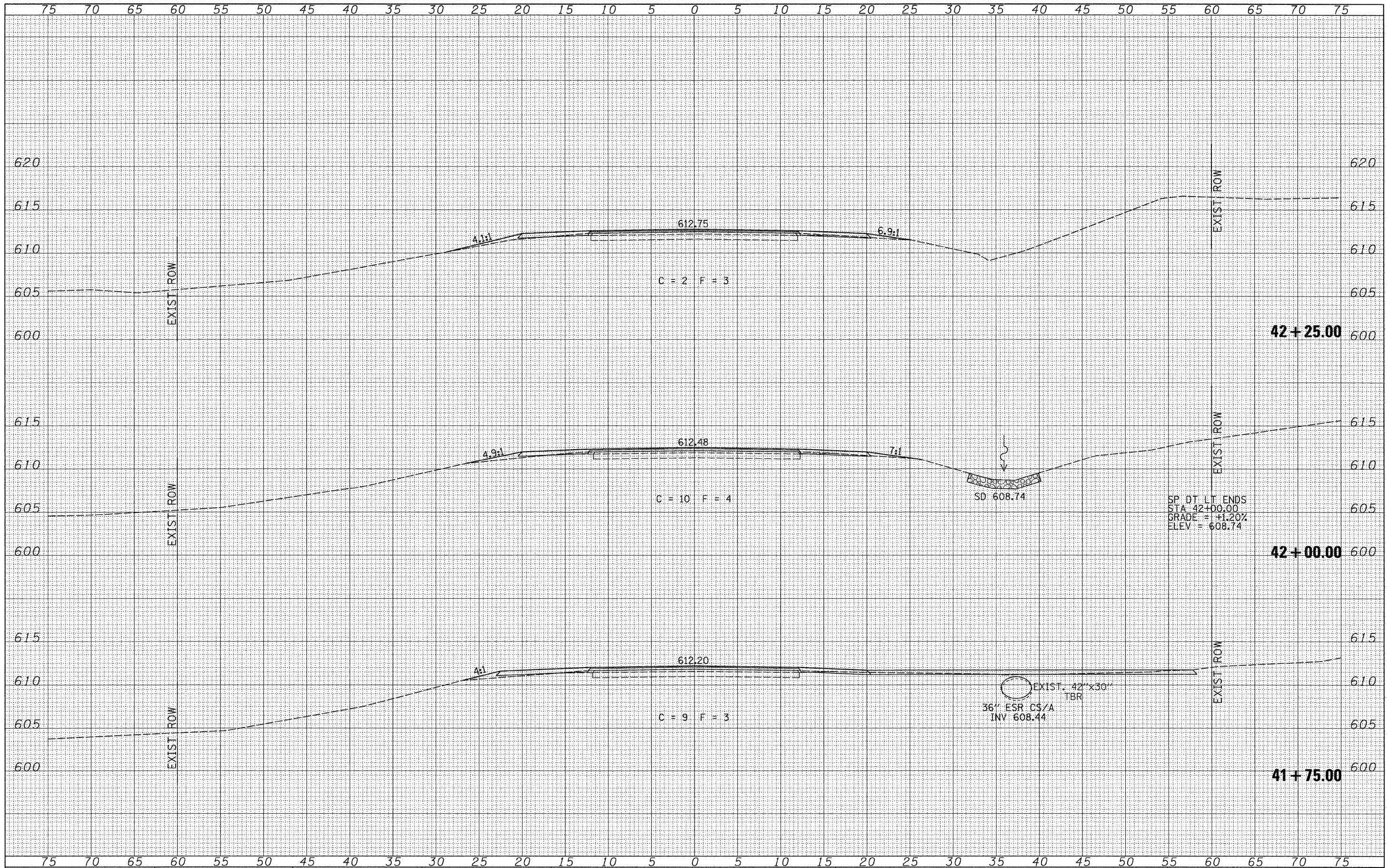


FINAL SURVEY	SURVEYED	DATE
NOTE BOOK NO.	PLOTTED	
	TEMPLATE	
	AREAS CHECKED	

ORIGINAL SURVEY	SURVEYED	DATE
NOTE BOOK NO.	PLOTTED	
	TEMPLATE	
	AREAS CHECKED	



SP DT LT ENDS
 STA 42+00.00
 GRADE = +1.20%
 ELEV = 608.74

EXIST. 42"x30"
 TBR
 36" ESR CS/A
 INV 608.44

FILE NAME -
 W:\Bridges\2856 LaSalle\2856xshsta.dgn

USER NAME - othomas
 DESIGNED -
 DRAWN -
 CHECKED -
 DATE -

DESIGNED -
 DRAWN -
 CHECKED -
 DATE -

REVISED -
 REVISED -
 REVISED -
 REVISED -

**LASALLE COUNTY
 COUNTY HIGHWAY 29 OVER
 EGG BAG CREEK**

CROSS SECTIONS
 SCALE: 1" = 5'-0" SHEET NO. 7 OF 10 SHEETS STA. 41+75.00 TO STA. 42+25.00

F.A.U. RTE.	SECTION	COUNTY	TOTAL SHEETS	SHEET NO.
6141	10-00649-00-BR	LASALLE	43	40
CONTRACT NO. 87430				
FED. ROAD DIST. NO. 7 ILLINOIS			FED. AID PROJECT BRS-0099043	