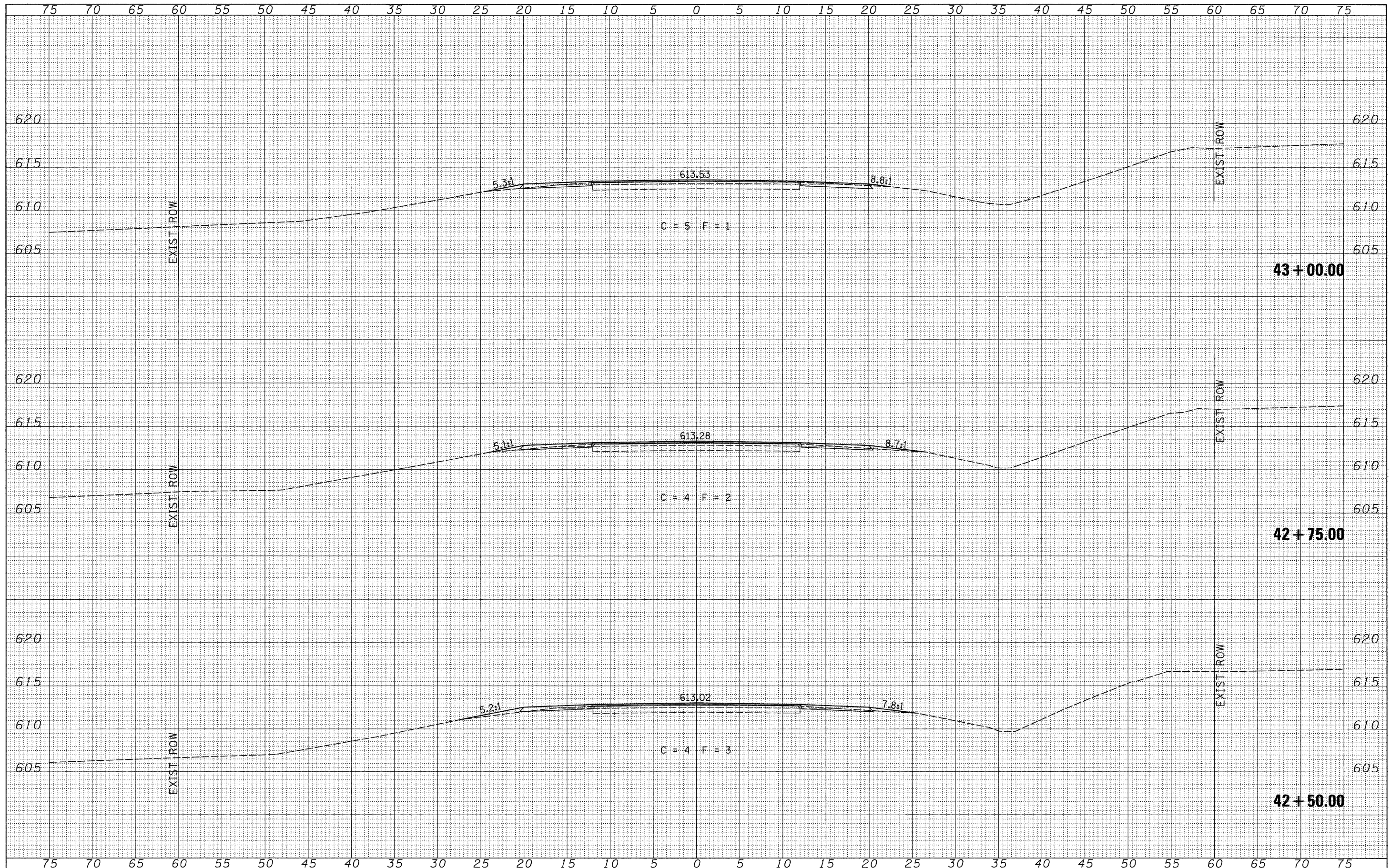


FINAL SURVEY	DATE
SURVEYED	BY
PLOTTED	
TEMPLATE	
NOTE BOOK	
NO.	
AREAS CHECKED	

ORIGINAL SURVEY	DATE
SURVEYED	BY
PLOTTED	
TEMPLATE	
NOTE BOOK	
NO.	
AREAS CHECKED	



FILE NAME =
 V:\Bridges\2656 LaSalle\2656xshsta.dgn

USER NAME = cthomas	DESIGNED -	REVISED -
	DRAWN -	REVISED -
PLLOT SCALE = 5.0000' / IN.	CHECKED -	REVISED -
PLLOT DATE = 10/1/2009	DATE -	REVISED -

**LASALLE COUNTY
 COUNTY HIGHWAY 29 OVER
 EGG BAG CREEK**

CROSS SECTIONS

SCALE: 1" = 5'-0" SHEET NO. 8 OF 10 SHEETS STA. 42+50.00 TO STA. 43+00.00

F.A.U. RTE.	SECTION	COUNTY	TOTAL SHEETS	SHEET NO.
6141	10-00649-00-BR	LASALLE	43	41
CONTRACT NO. 87430				
FED. ROAD DIST. NO. 7 ILLINOIS		FED. AID PROJECT BRS-0099(043)		