

STATE OF ILLINOIS
DEPARTMENT OF TRANSPORTATION
DIVISION OF HIGHWAYS

PLANS FOR PROPOSED
AMERICAN RECOVERY and REINVESTMENT ACT PROJECT
SIDEWALK IMPROVEMENTS AT VARIOUS LOCATIONS WITHIN
THE VILLAGE OF COAL CITY
SECTION NO.: 09-00029-00-SW
PROJECT NO.: ARA-9003(498)
JOB NO. C-93-017-10
GRUNDY AND WILL COUNTIES

F. A. U. SITE	SECTION	COUNTY	TOTAL SHEETS	SHEET NO.
N/A	09-00029-00-SW	GRUNDY/WILL	5	1
STA.	TO STA.			
FED. ROAD DIST. NO.	ILLINOIS	FED. AID PROJECT	ARA-9003(498)	

CONTRACT #87437

INDEX OF SHEETS

- COVER SHEET, INDEX OF SHEETS, & STATE STANDARDS
- SUMMARY OF QUANTITIES, & GENERAL NOTES
- 3-5. SIDEWALK IMPROVEMENT PLAN

HIGHWAY STANDARDS

- 000001-05 STANDARD SYMBOLS, ABBREVIATIONS AND PATTERNS
- 424001-05 CURB RAMPS FOR SIDEWALKS
- 606001-04 CONCRETE CURB TYPE B AND COMBINATION CONCRETE CURB AND GUTTER
- 701006-03 OFF-RD OPERATIONS, 2L, 2W, 15' TO 24" FROM EDGE OF PAVEMENT
- 701501-05 URBAN LANE CLOSURE, 2L, 2W, UNDIVIDED
- 701801-04 LANE CLOSURE, MULTILANE 1W OR 2W CROSSWALK OR SIDEWALK CLOSURE
- 701901-01 TRAFFIC CONTROL DEVICES

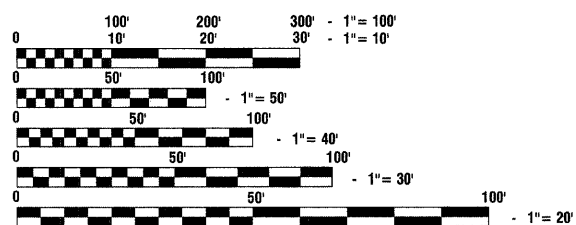
DESIGN GUIDELINES

BUREAU OF LOCAL ROADS AND STREETS MANUAL

TRAFFIC DATA

ADT<300 (ALL ROADS)

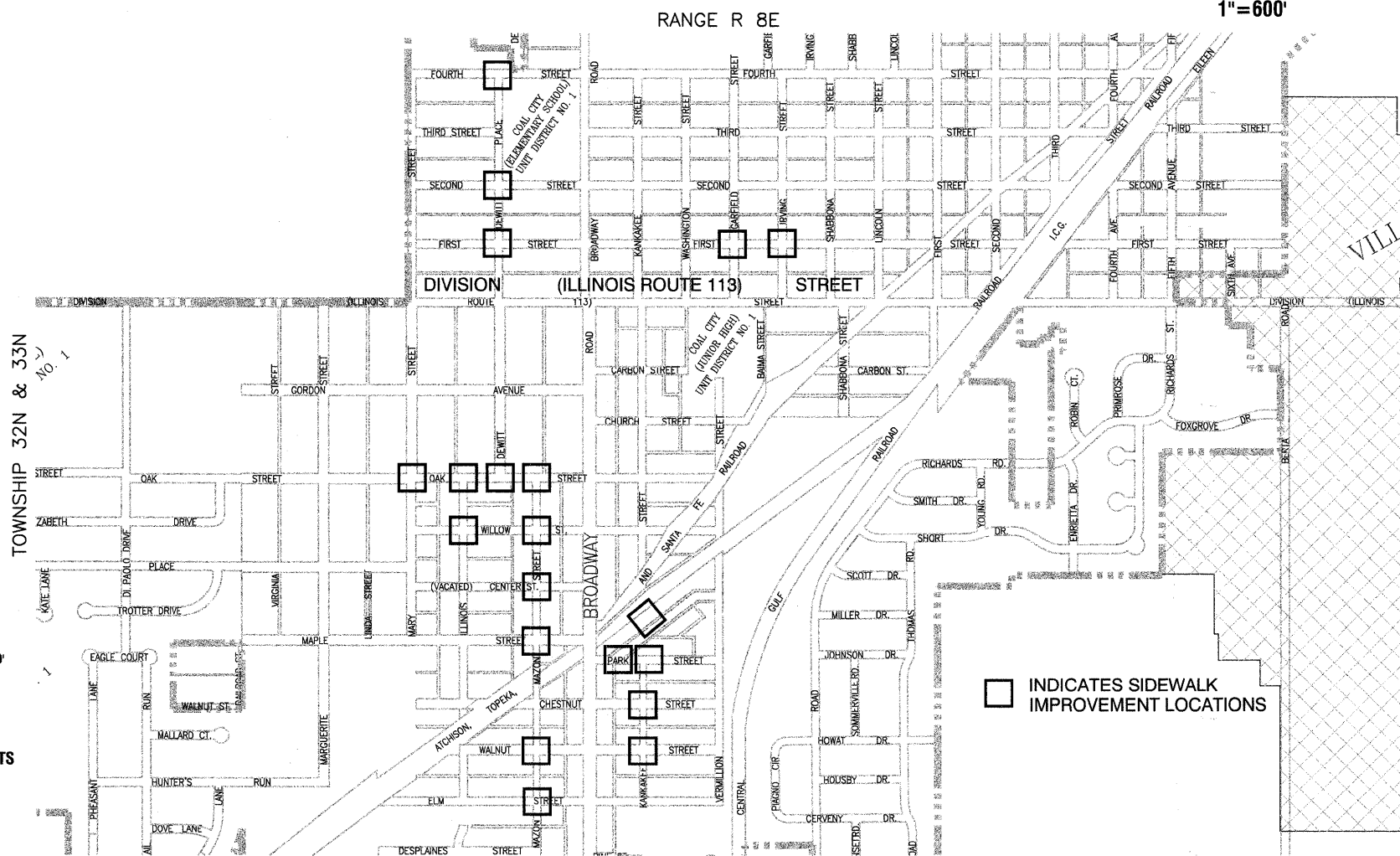
SCALES
PLAN - 1"=50'
PROFILE HORIZ. - 1"=50'
PROFILE VERT. - 1"=5'
CROSS SECTIONS - 1"=10'



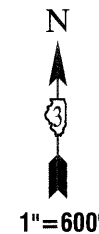
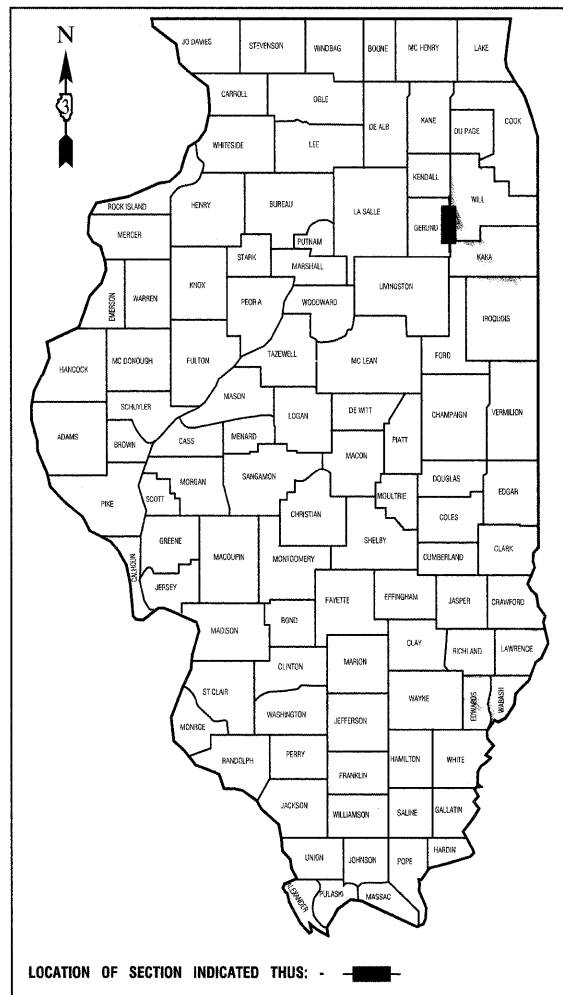
FULL SIZE PLANS HAVE BEEN PREPARED USING STANDARD ENGINEERING SCALES, REDUCED SIZED PLANS WILL NOT CONFORM TO STANDARD SCALES, IN MAKING MEASUREMENTS ON REDUCED PLANS, THE ABOVE SCALES MAY BE USED.

J. U. L. I. E.
JOINT UTILITY LOCATION INFORMATION FOR EXCAVATION
1-800-892-0123 or 811

CONTRACT NO. 87437



□ INDICATES SIDEWALK IMPROVEMENT LOCATIONS



STATE OF ILLINOIS DEPARTMENT OF TRANSPORTATION
DIVISION OF HIGHWAYS

Approved: 10/22/09
Paul Nelson
President, Village of Coal City

Passed: 10/28/09
Kenneth L. Long
District 3 Engineer of Local Roads & Streets

Released for Bid Based on Limited Review: 10/28/09
George E. Ryan
Deputy Director of Highways, Rec'd 2 Engineer

PRINTED BY THE AUTHORITY OF THE STATE OF ILLINOIS

PREPARED BY OR UNDER THE DIRECT SUPERVISION OF:
Eric Brown
DATED THIS 21ST DAY OF OCTOBER, 2009



FIELD ENGINEER: ROGER BLACKLY (815) 434-8495
CONSULTANTS: ROBINSON ENGINEERING, LTD. 815-433-0400

LOCATION MAP
GROSS LENGTH=N/A
NET LENGTH=N/A