

STATE OF ILLINOIS
DEPARTMENT OF TRANSPORTATION
DIVISION OF HIGHWAYS

F.A. No.	SECTION	COUNTY	TOTAL SHEETS	SHEET NO.
Various	09-00079-00-RS	LASALLE	15	1
		ILLINOIS	CONTRACT 5036(027)	

INDEX OF SHEETS

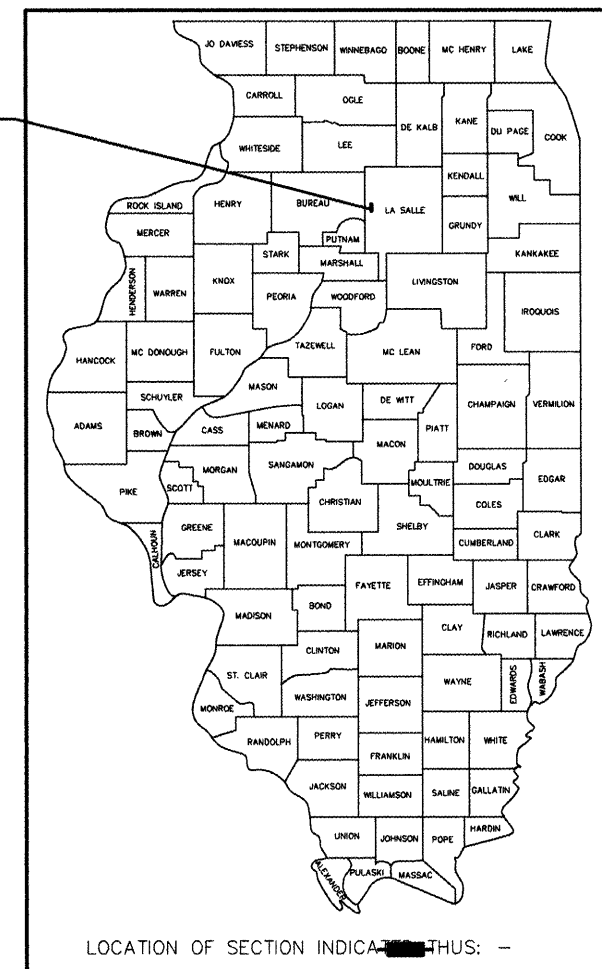
1	Cover Sheet and Index of Sheets
2	Schedule and Summary of Quantities
3	General Notes and Typical Sections
4-15	Project Plans

FAU 6089 (3RD STREET)
FAU 6109 (CROSAT STREET)
FAU 6125 (8TH STREET)
FAU 6105 (CREVE COEUR STREET)
FAU 6084 (EDWARDS AVENUE)
CITY OF LA SALLE
LA SALLE COUNTY
SECTION # 09-00079-00-RS

PROPOSED
HIGHWAY PLANS

SECTION 09-00079-00-RS
AMERICAN RECOVERY AND REINVESTMENT ACT
CITY OF LA SALLE
PROJECT NO. ARA-5036(027)
JOB NO. C-93-014-10

Project Location



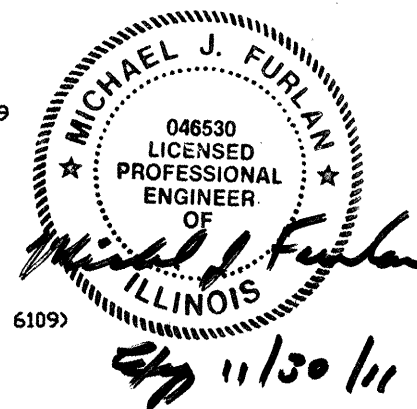
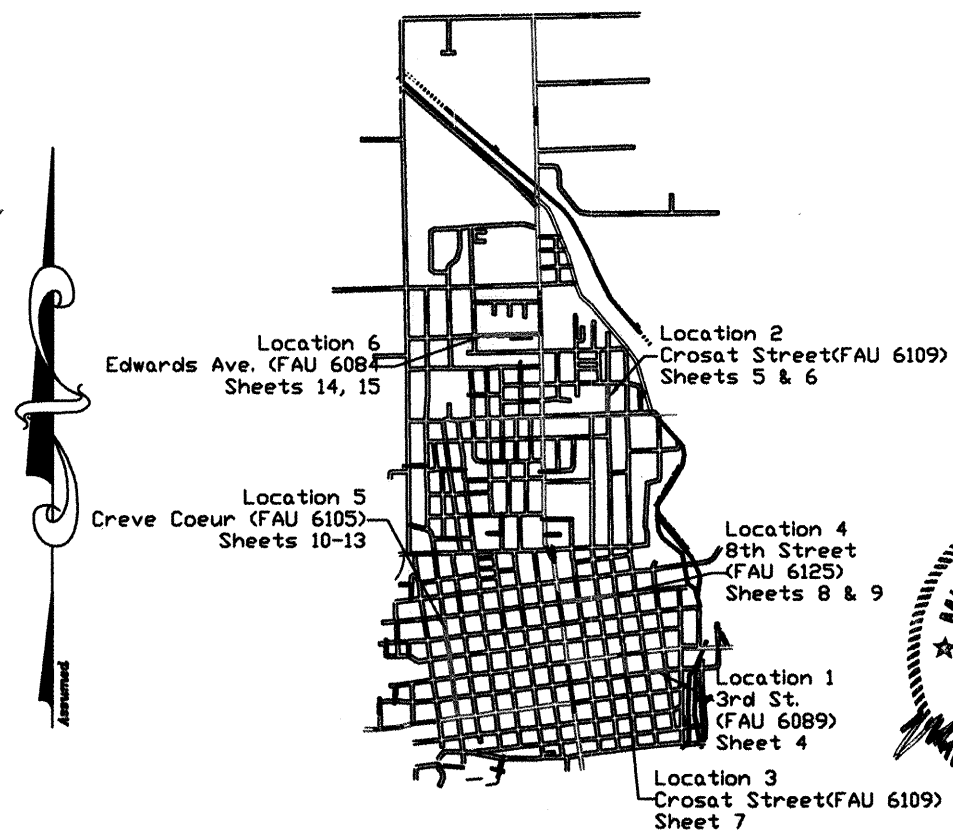
Street Name	Functional Classification	FAU Route	ADT	Design Speed
3rd Street	Urban Collector	6089	1300	30
Crosat Street	Urban Collector	6109	1700	30
8th Street	Urban Collector	6125	1450	30
Creve Coeur Street	Urban Collector	6105	2900	30
Edwards Avenue	Urban Collector	6084	500	30

Highway Standards	
000001-05	Standard Symbols, Abbreviations, and Patterns
701501-05	Urban Lane Closure, 2L, 2W, Undivided
701901-01	Traffic Control Devices

J.U.L.I.E.
JOINT UTILITY LOCATION INFORMATION FOR EXCAVATION
1-800-892-0123
OR 811

PROJECT ENGINEER
Michael J. Furlan

CONTRACT NO. 87441



LAPP POLICIES

STATE OF ILLINOIS
DEPARTMENT OF TRANSPORTATION
DIVISION OF HIGHWAYS

SUBMITTED October 21 2009
George F. Lyen
DEPUTY DIRECTOR OF HIGHWAYS, REGION ENGINEER

October 21 2009
Michael J. Furlan
ENGINEER OF DESIGN AND ENVIRONMENT

____ 20 ____
DIRECTOR OF HIGHWAYS, CHIEF ENGINEER

PRINTED BY THE AUTHORITY OF THE STATE OF ILLINOIS

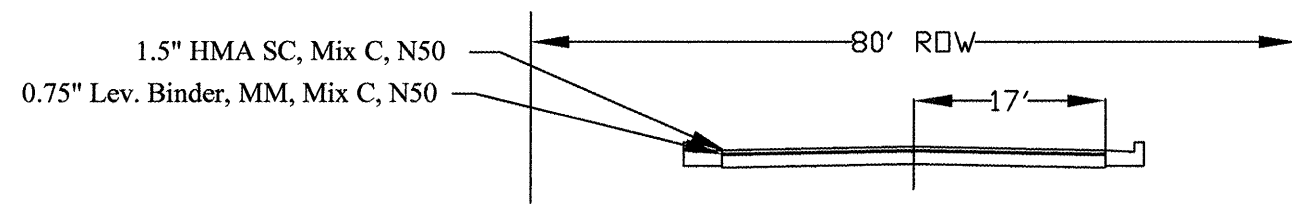
GROSS LENGTH = 5583 FT. = 1.057 MILE
NET LENGTH = 5583 FT. = 1.057 MILE

RESURFACING SCHEDULE																
STREET	FROM	TO	LENGTH	WIDTH	MAINLINE AREA	RADIUS AREA	PAVEMENT AREA	SURFACE REMOVAL, 2.25"	BIT. MAT. PRIME, RC- 70	AGG., PRIME COAT	LEV. BIND., MM	HMA SC, MIX C, N50	MH ADJ.	WV ADJ.	CL. D PATCH	Pavement Marking, 4" white
			feet	feet	sq. yard	sq. yard	sq. yards	sq. yard	gal.	ton	ton	ton	each	each	sq. yard	
3rd	La Harpe	Sterling	385	34	1454	154	1608	1608	161	2	72	145				
Crosat	4th	5th	426	34	1609	216	1825	1825	183	2	82	164				
Crosat	O'Connor	Grant	591	22	1445	516	1961	1961	196	2	88	176	4	4	167	
8th	Crosat	Tonti	336	37	1381	55	1436	1436	144	1	65	129	1			
8th	Tonti	Hennepin	382	37	1570	54	1624	1624	162	2	73	146				
8th	Hennepin	Joliet	300	37	1233	0	1233	1233	123	1	56	111				143
Creve Coeur	3rd	4th	382	26.2	1112	291	1403	1403	140	1	63	126				
Creve Coeur	4th	5th	400	26.2	1164	170	1334	1334	133	1	60	120	2	1		
Creve Coeur	5th	6th	358	26.2	1042	148	1190	1190	119	1	54	107	2			
Creve Coeur	6th	7th	366	26.2	1065	133	1198	1198	120	1	54	108	2			
Creve Coeur	7th	8th	361	26.2	1051	134	1185	1185	118	1	53	107	2	1		
Edwards	St. Vincent	Malcomb	1296	23.3	3355	0	3355	3355	336	3	151	302	12			
Totals			5583		17484	1871	19354	19354	1935	19	871	1742	25	6	167	143

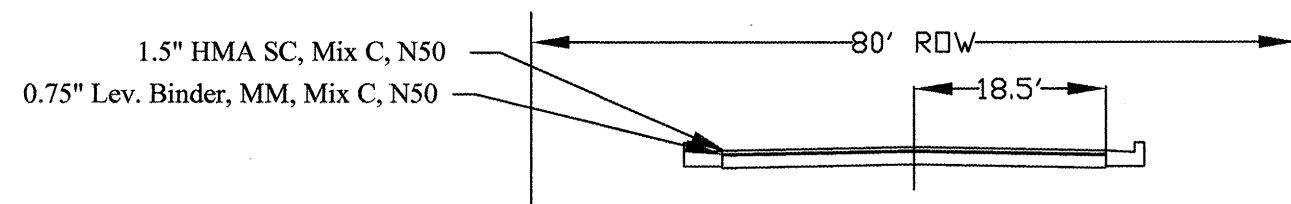
SUMMARY OF QUANTITIES			Construction Type Code 1000
CODE NO.	DESCRIPTION	UNIT	TOTAL QUANTITY
40600100	BITUMINOUS MATERIALS (PRIME COAT)	GALLON	1935
40600300	AGGREGATE (PRIME COAT)	TON	19
40600625	LEVELING BINDER (MACHINE METHOD), N50	TON	871
40603310	HOT-MIX ASPHALT SURFACE COURSE, MIX "C", N50	TON	1742
44000158	HOT-MIX ASPHALT SURFACE REMOVAL, 2 1/4"	SQ YD	19354
44201711	CLASS D PATCHES, TYPE IV, 5 INCH	SQ YD	167
60255500	MANHOLES TO BE ADJUSTED	EACH	25
60266600	VALVE BOXES TO BE ADJUSTED	EACH	6
67100100	MOBILIZATION	L SUM	1
70103700	TRAFFIC CONTROL COMPLETE	L SUM	1
* 78001110	PAINT PAVEMENT MARKING - LINE 4"	FOOT	143

* SPECIALTY ITEMS

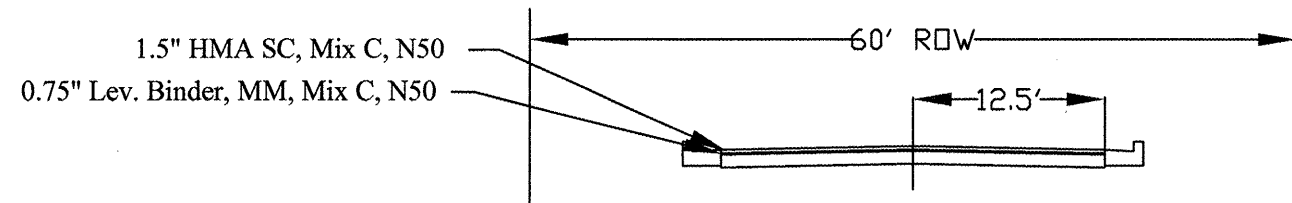
TYPICAL SECTIONS



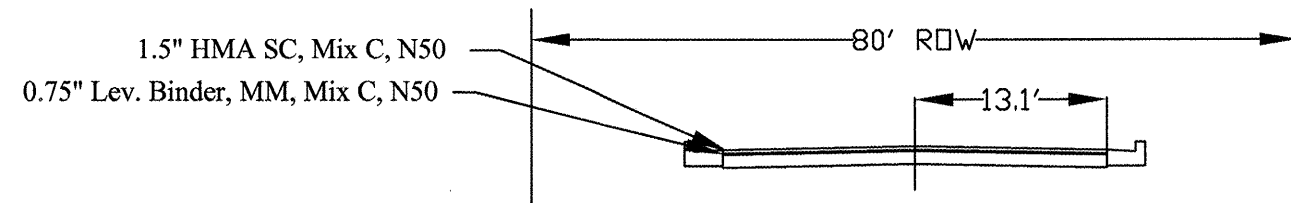
Third Street, La Harpe to Sterling



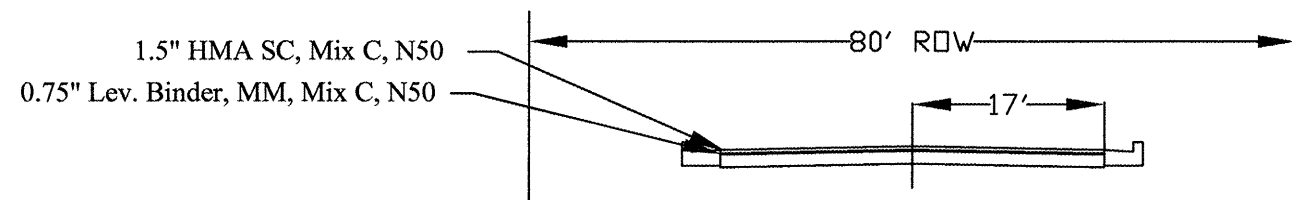
8th Street, Joliet to Crosat



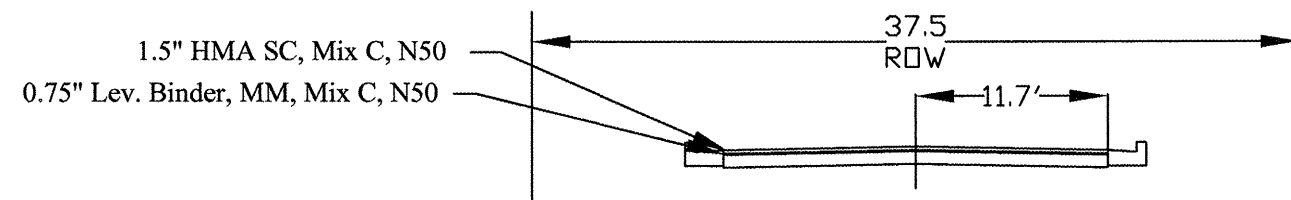
Crosat Street, O'Connor to Grant



Creve Coeur Street, Third to Eighth



Crosat Street, Fourth to Fifth



Edwards Avenue, Malcolm to St. Vincent

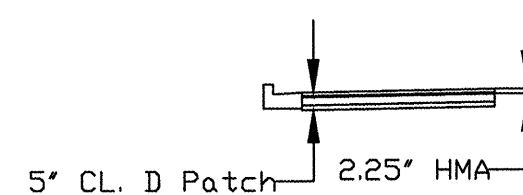
GENERAL NOTES:

- All work to conform to the "Standard Specifications for Road and Bridge Construction in Illinois", latest edition.
- Twenty four hour notice shall be given to the Engineer before work shall begin.

City of LaSalle
Section 09-00079-00-RS
LaSalle County
Contract No. 87441

	HMA Binder (Patches)	HMA Level Binder	HMA Surface
PG Grade	PG64-22	PG64-22	PG64-22
Design Air Voids	4.0% @ N50	4.0% @ N50	4.0% @ N50
Mixture Composition	IL 19.0	IL 9.5	IL 12.5 or IL 9.5
Friction Aggregate			Mixture C
Density Test Method	Cores	Satisfaction of Engineer	Cores

CLASS D PATCH



Drawn by: MJF	Number:	Revisions	
Checked by:	Date:	Date	By
		8/4/09	MJF

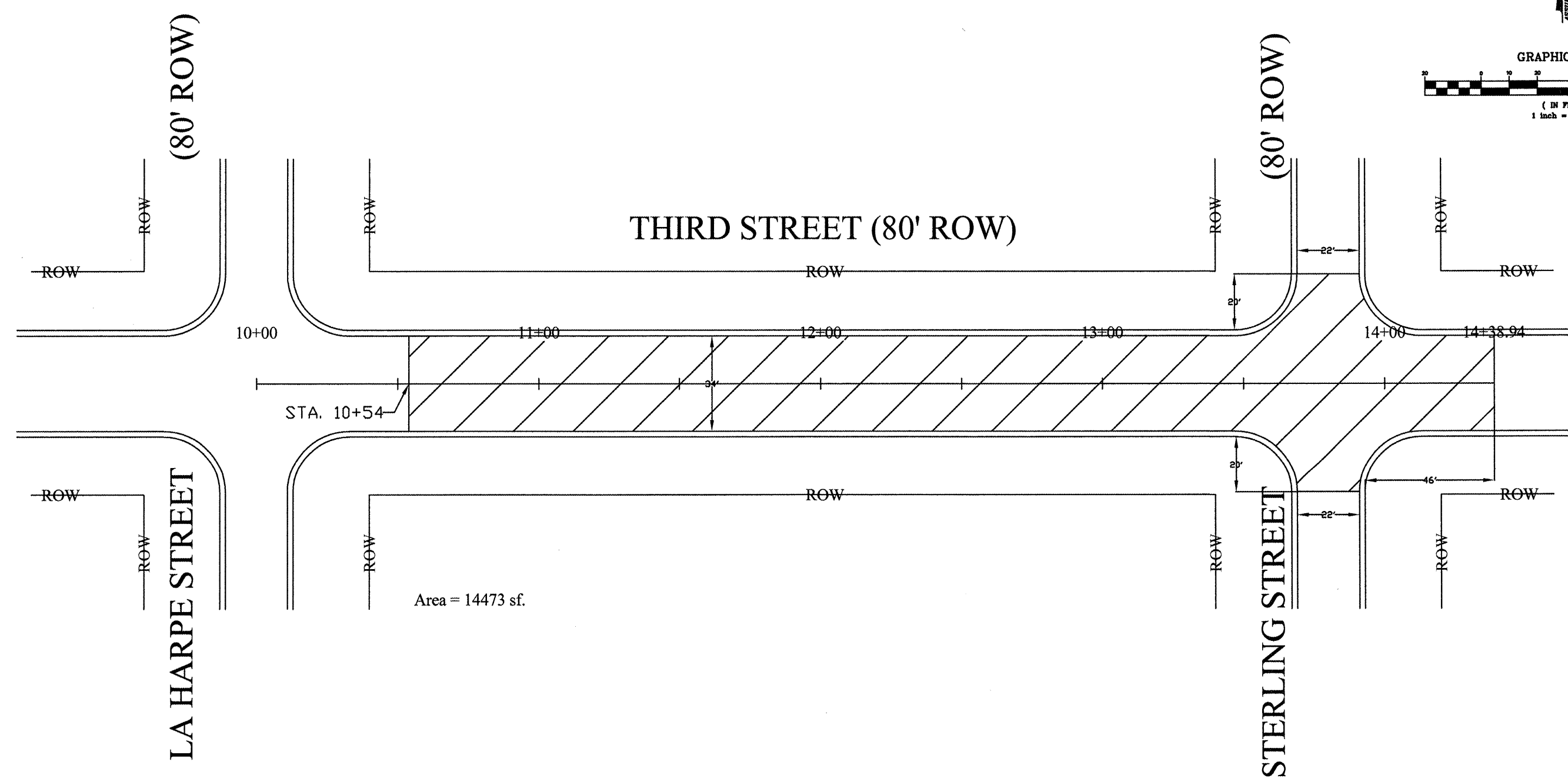
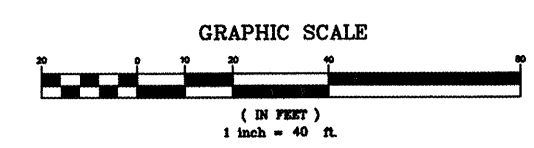
CITY OF LA SALLE

ARRA Streets 2009
City of La Salle, IL

General Notes and Typical Sections

Scale: 1"= 40'
File: 090007900RS

Sheet 3 of 15



Area = 14473 sf.

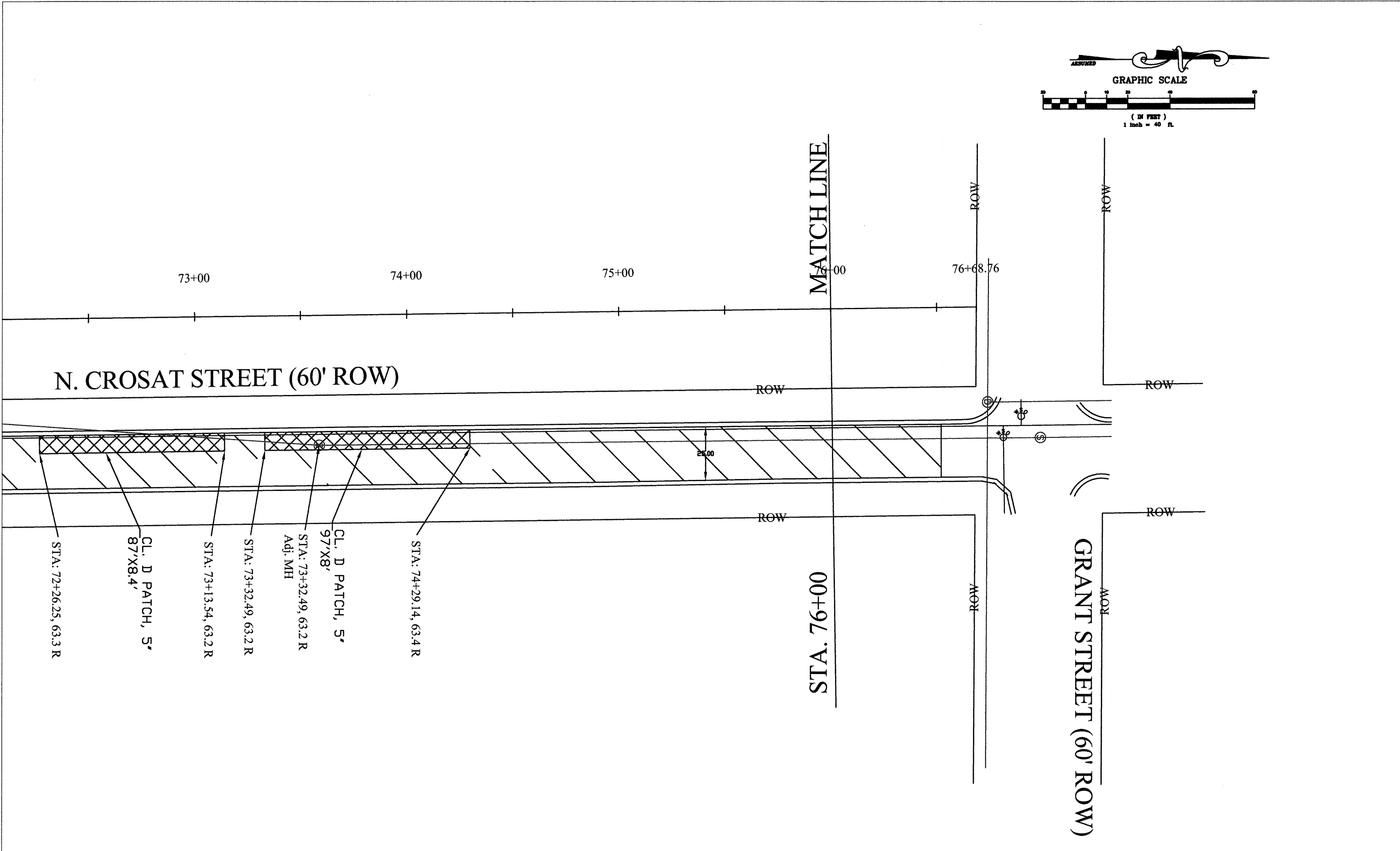
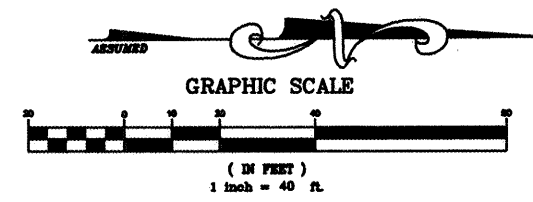
Drawn by: MJF	Number:	Revisions	
Checked by:	Date: 090007900RS	Date	By
		8/4/09	MJF

CITY OF LA SALLE

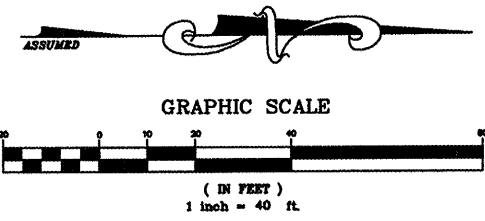
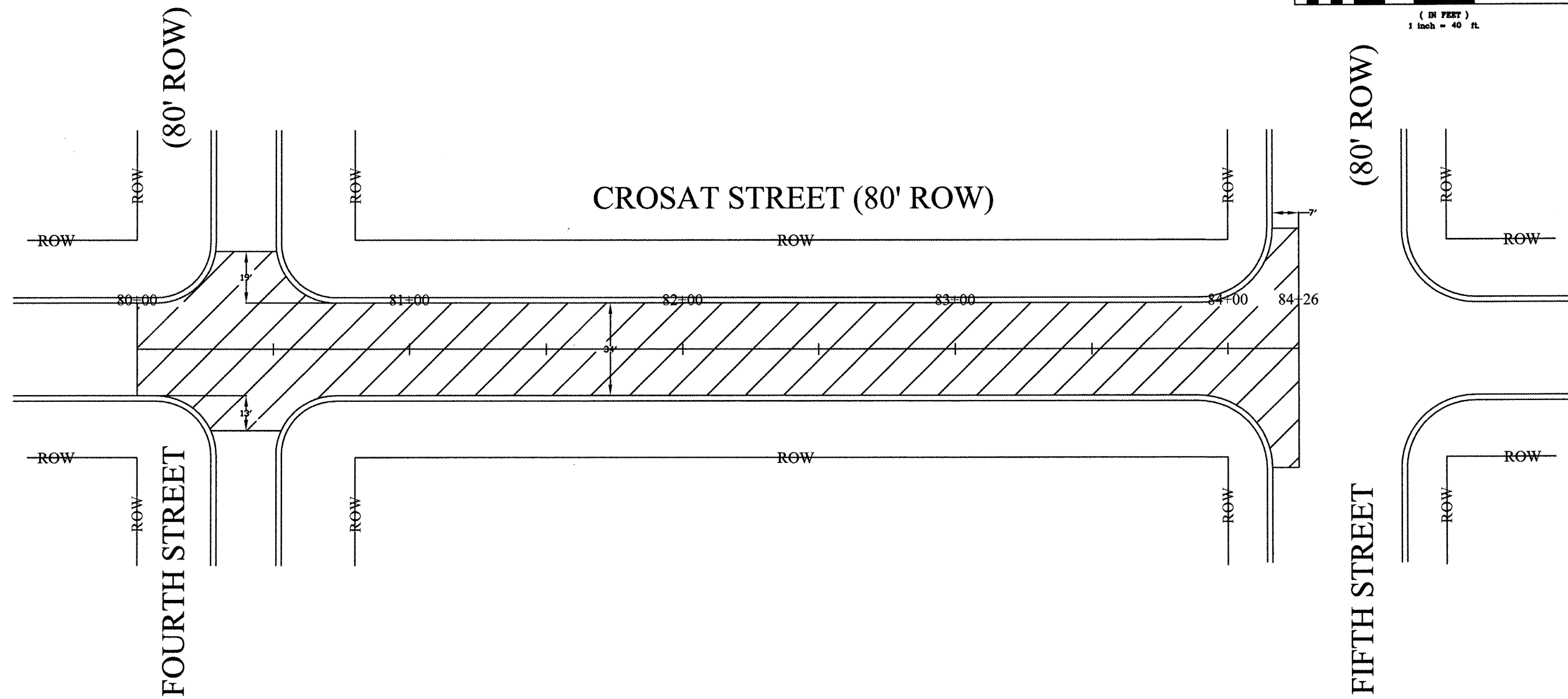
ARRA Streets 2009
City of La Salle, IL

Plan View

Scale: 1" = 40'	Sheet 4 of 15
File: 090007900RS	



Drawn by: MJF	Number:	<table border="1"> <tr> <th colspan="2">Revisions</th> </tr> <tr> <td>Date</td> <td>By</td> </tr> <tr> <td>8/4/09</td> <td>MJF</td> </tr> </table>	Revisions		Date	By	8/4/09	MJF	CITY OF LA SALLE	ARRA Streets 2009 City of La Salle, IL	Plan View	Scale: 1"= 40'	Sheet 6 of 15
Revisions													
Date	By												
8/4/09	MJF												
Checked by:	Date:	File: 090007900RS											



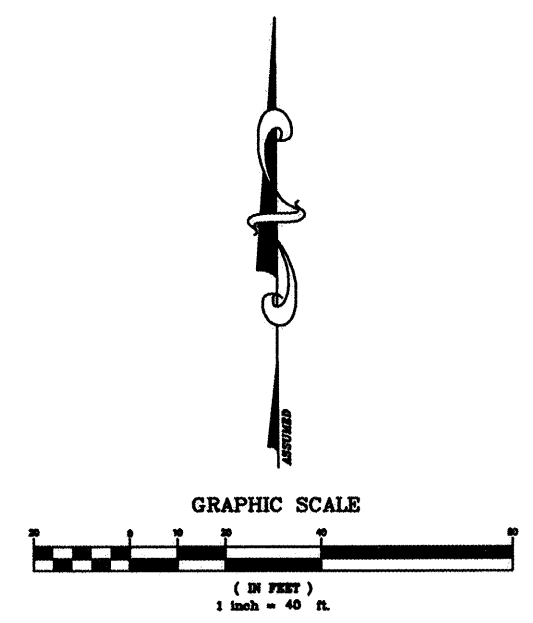
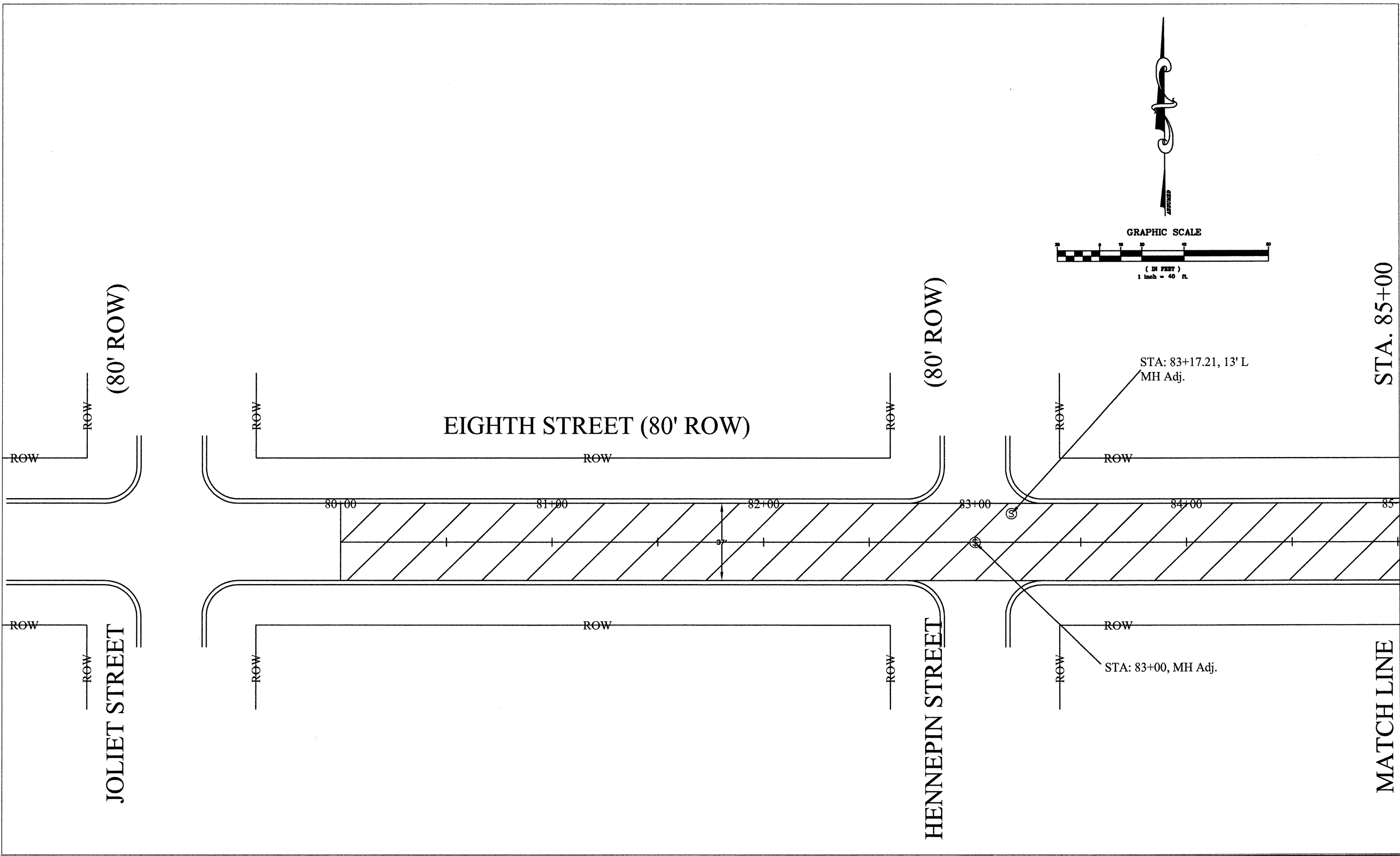
Drawn by: MJF	Number:	Revisions	
Checked by:	Date:	Date	By
		8/4/09	MJF

CITY OF LA SALLE

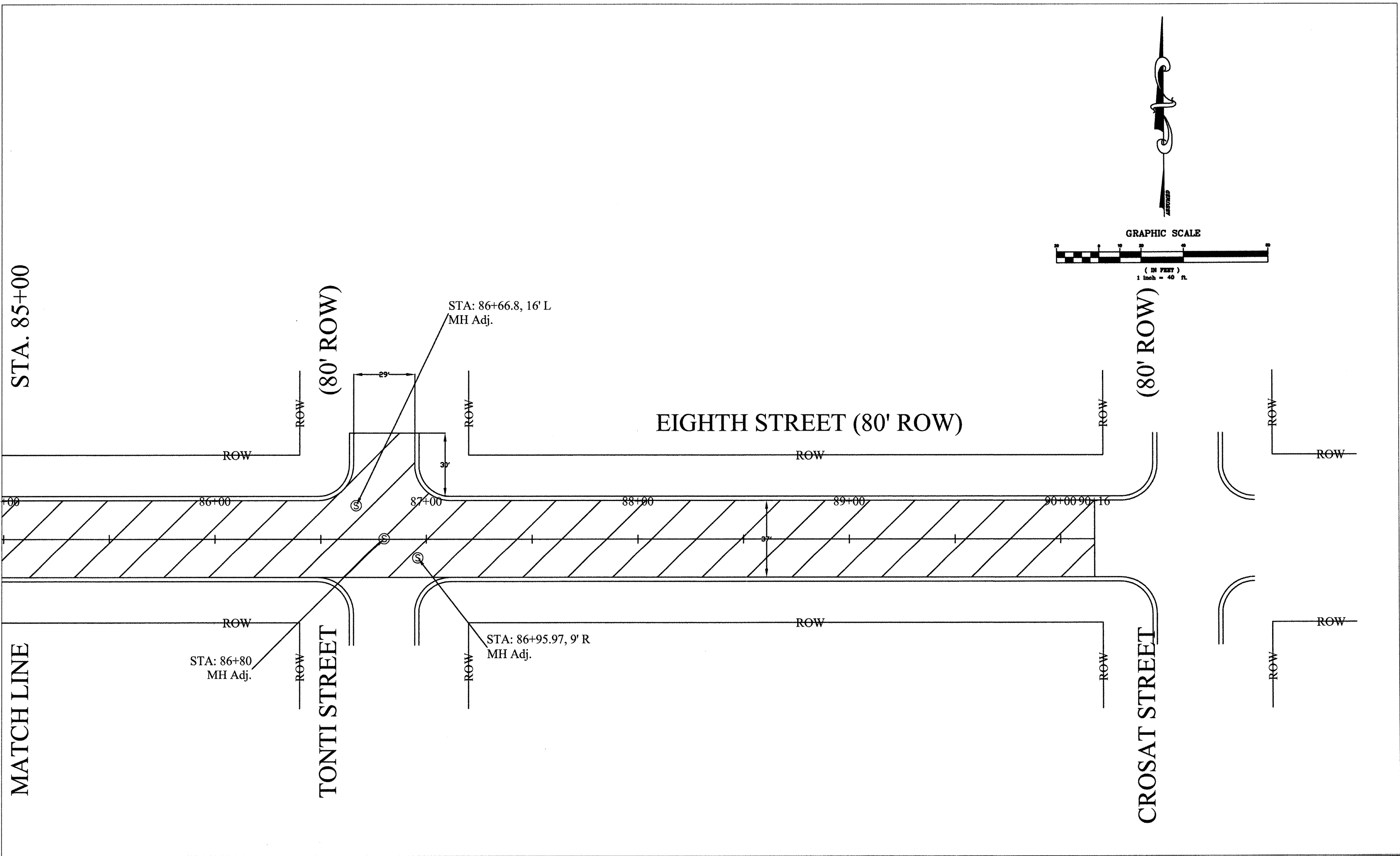
ARRA Streets 2009
City of La Salle, IL

Plan View

Scale: 1"= 40'	Sheet 7 of 15
File: 090007900RS	



Drawn by: MJF	Number:	<table border="1" style="font-size: 8px;"> <tr><th colspan="2">Revisions</th></tr> <tr><th>Date</th><th>By</th></tr> <tr><td>8/4/09</td><td>MJF</td></tr> </table>	Revisions		Date	By	8/4/09	MJF	CITY OF LA SALLE	ARRA Streets 2009 City of La Salle, IL	Plan View	Scale: 1"= 40'	Sheet 8 of 15
Revisions													
Date	By												
8/4/09	MJF												
Checked by:	Date:					File: 090007900RS							



Drawn by: MJF	Number:	Revisions	
Checked by:	Date:	Date	By
		8/4/09	MJF

CITY OF LA SALLE

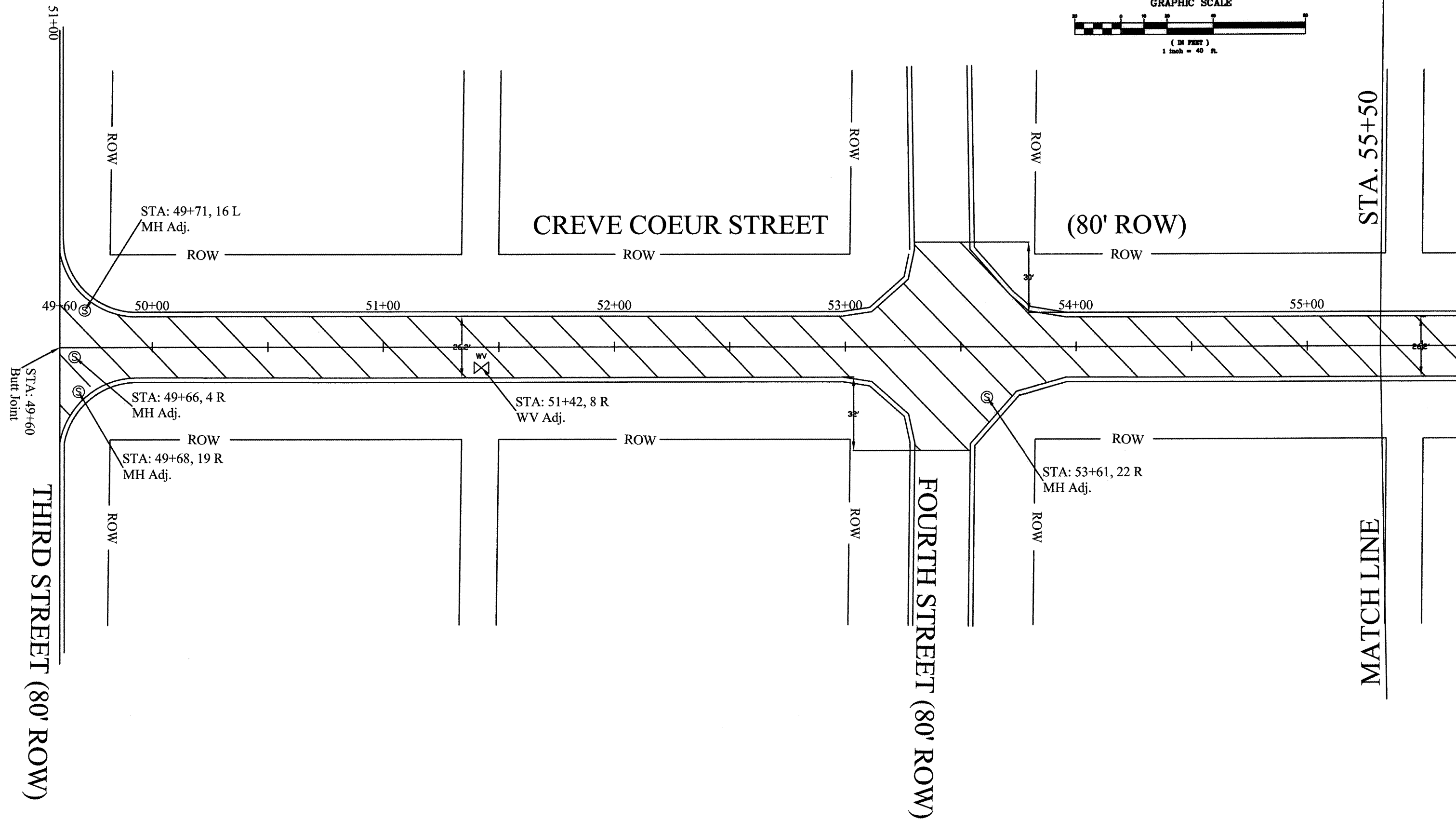
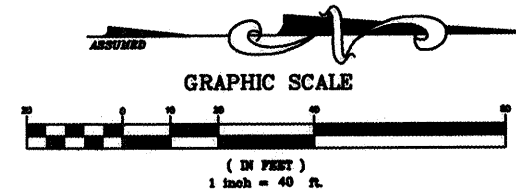
ARRA Streets 2009
City of La Salle, IL

Plan View

Scale: 1"= 40'

Sheet 9 of 15

File: 090007900RS



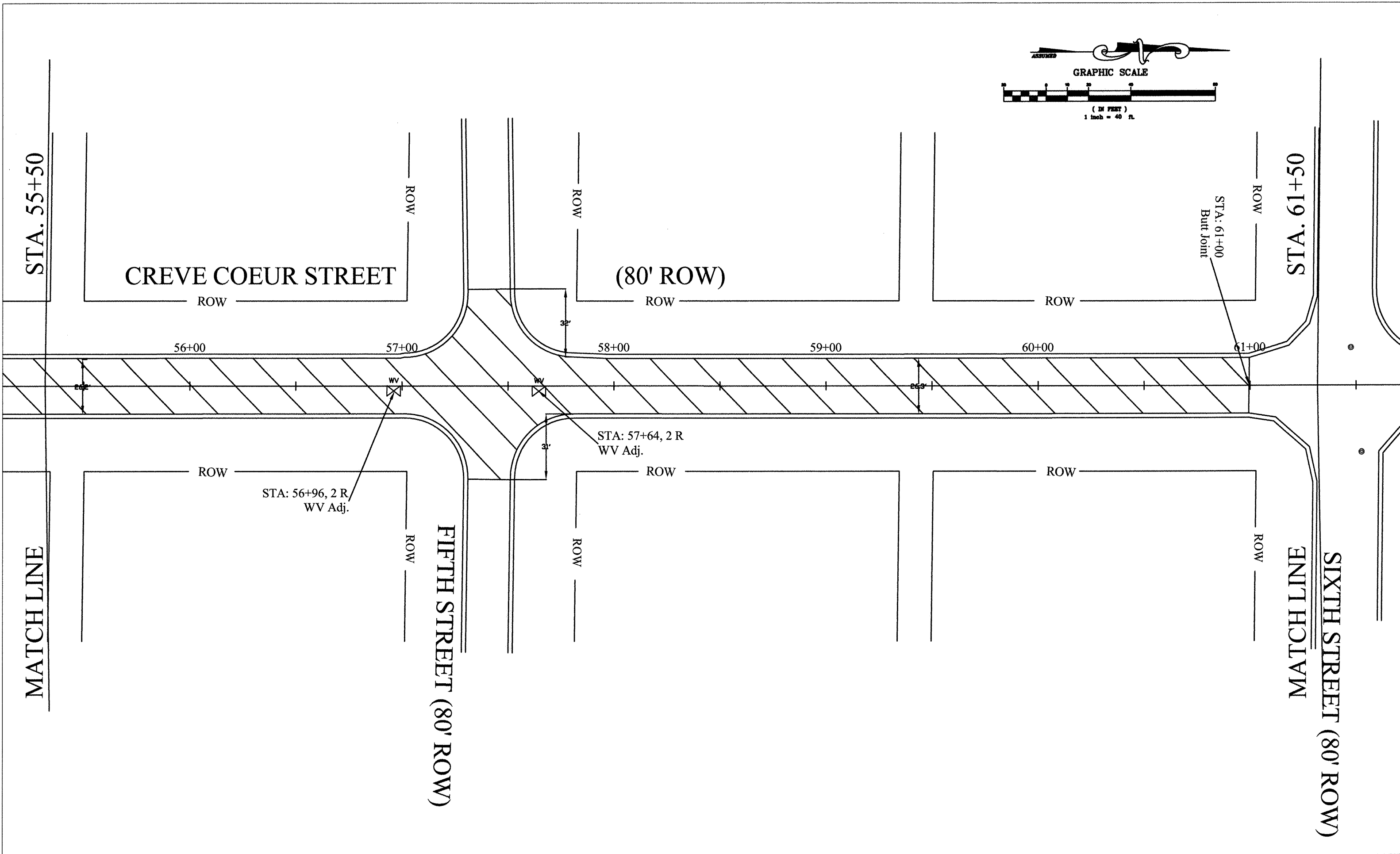
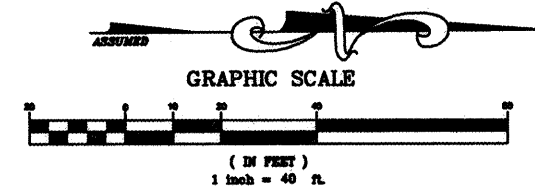
Drawn by: MJF	Number:	Revisions	
		Date	By
Checked by:	Date:	8/4/09	MIF

CITY OF LA SALLE

ARRA Streets 2009
City of La Salle, IL

Plan View

Scale: 1"= 40'	Sheet 10 of 15
File: 090007900RS	



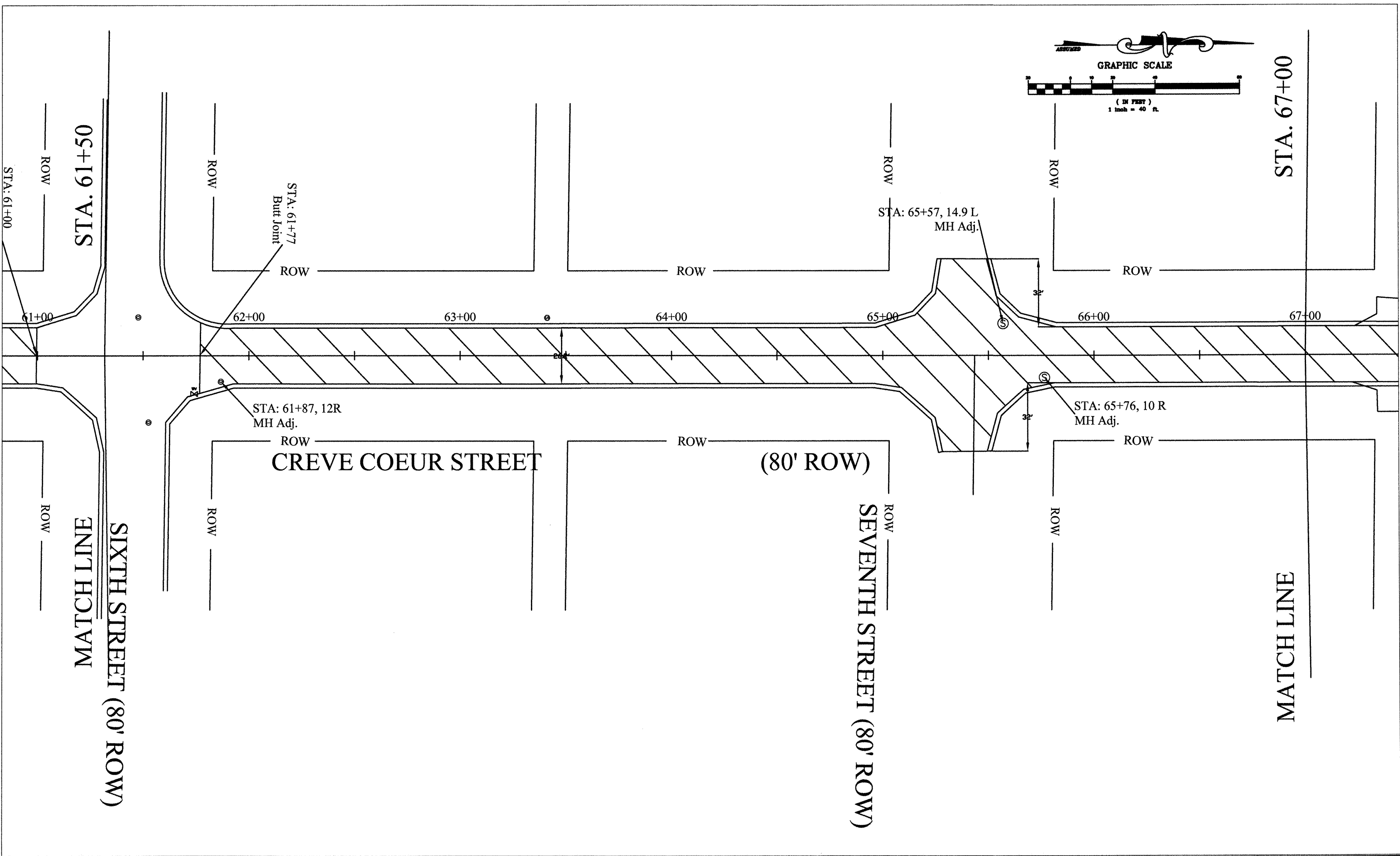
Drawn by: MJF	Number:	Revisions	
Checked by:	Date:	Date	By
		8/4/09	MJF

CITY OF LA SALLE

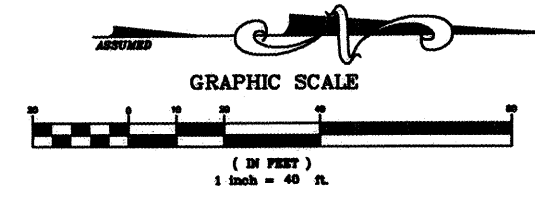
ARRA Streets 2009
City of La Salle, IL

Plan View

Scale: 1"= 40'	Sheet 11 of 15
File: 090007900RS	



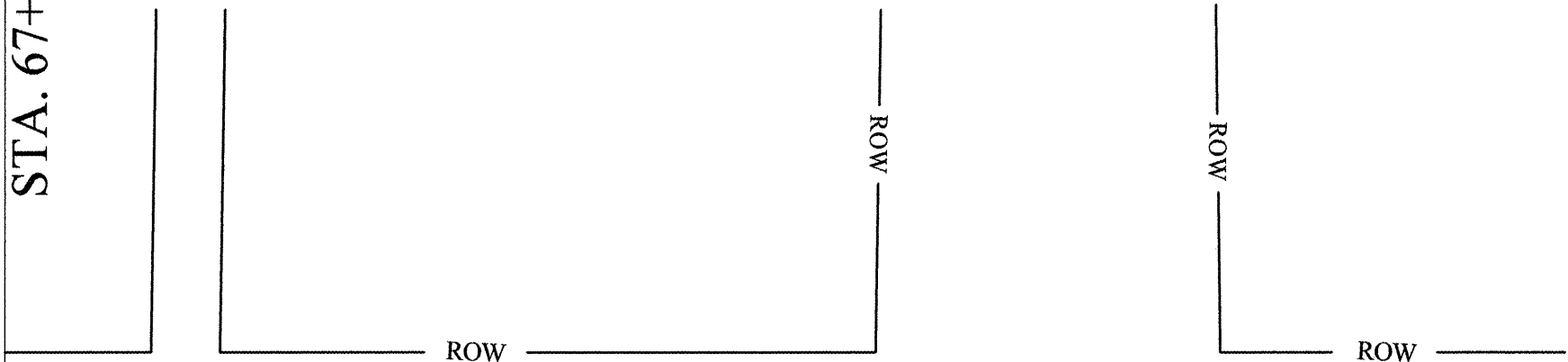
Drawn by: MJF	Number:	Revisions	CITY OF LA SALLE	ARRA Streets 2009 City of La Salle, IL	Plan View	Scale: 1"=40'	Sheet 12 of 15
Checked by:	Date:	<table border="1"> <tr> <th>Date</th> <th>By</th> </tr> <tr> <td>8/4/09</td> <td>MJF</td> </tr> </table>				Date	By
Date	By						
8/4/09	MJF						



STA. 67+00

+00

MATCH LINE



ROW

ROW

ROW

68+00

69+00

ROW

ROW

CREVE COEUR STREET

STA. 69+04
Butt Joint

EIGHTH STREET (80' ROW)

(80' ROW)

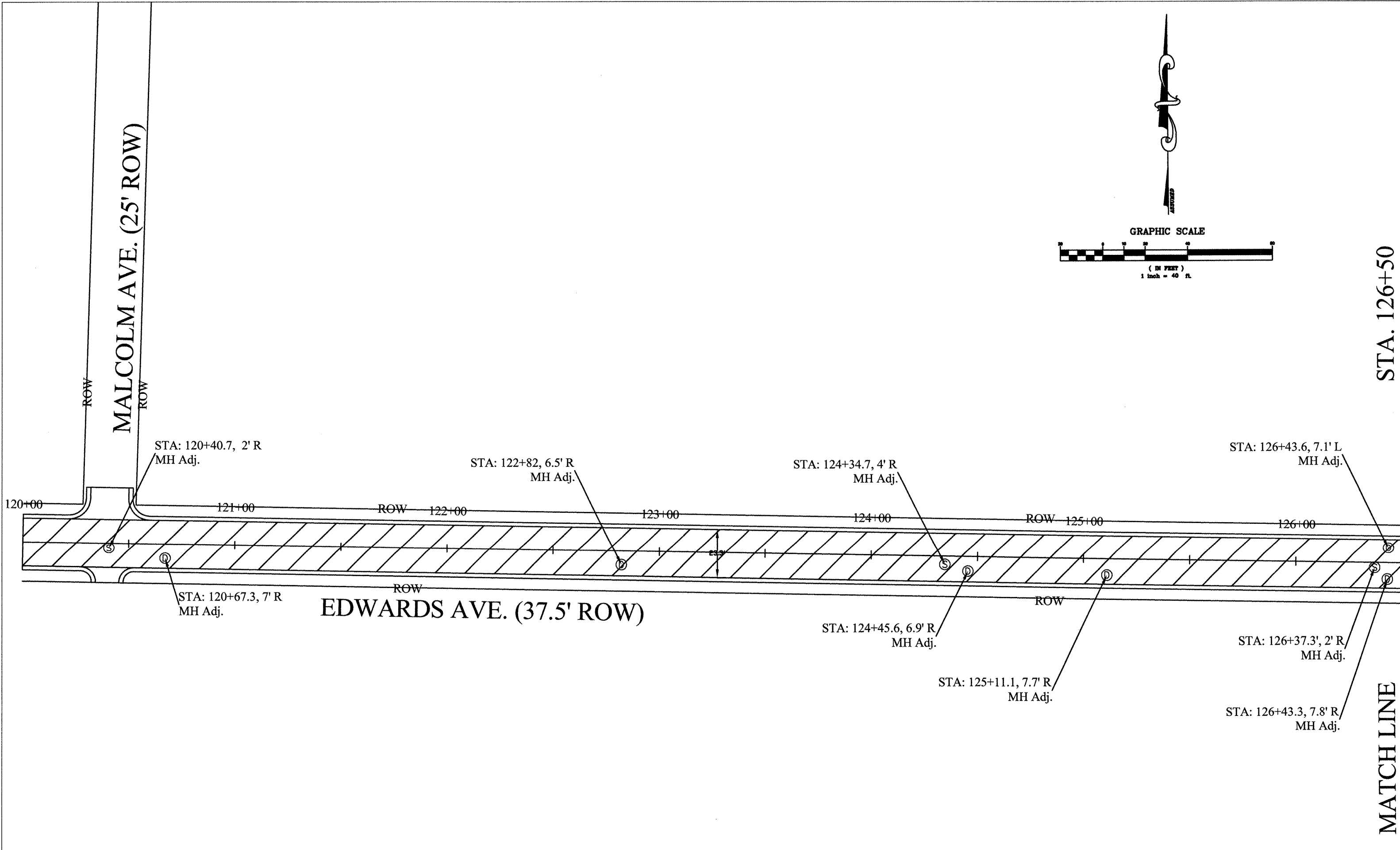
Drawn by: MJF	Number:	Revisions	
Checked by:	Date:	Date	By
		8/4/09	MJF

CITY OF LA SALLE

ARRA Streets 2009
City of La Salle, IL

Plan View

Scale: 1"= 40'	Sheet 13 of 15
File: 090007900RS	



Drawn by: MJF	Number:	Revisions	
Checked by:	Date:	Date	By
		8/4/19	MJF

CITY OF LA SALLE

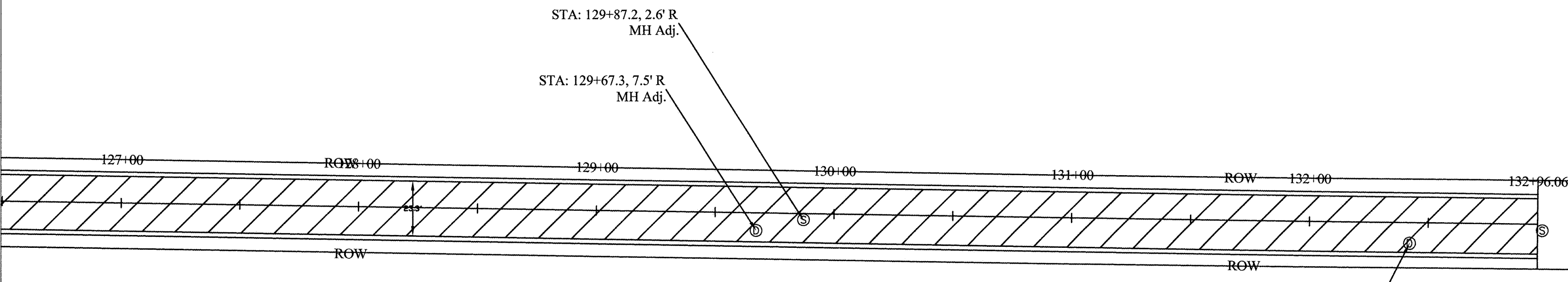
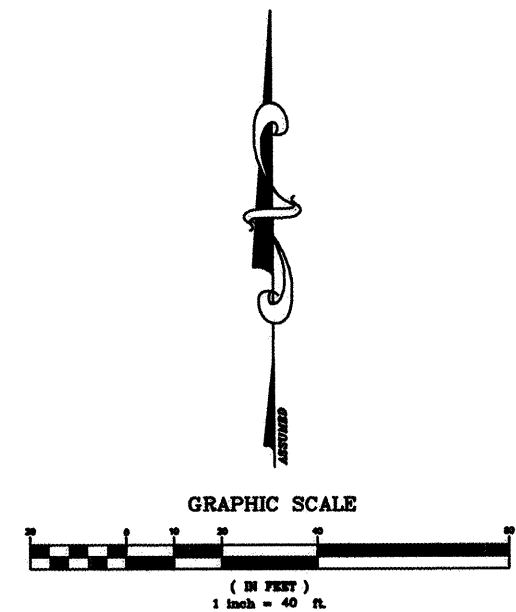
ARRA Streets 2009
City of La Salle, IL

Plan View

Scale: 1"= 40'	Sheet 14 of 15
File: 090007900RS	

STA. 126+50

MATCH LINE



EDWARDS AVENUE (37.5' ROW)

Drawn by: MJF	Number:	Revisions	
		Date	By
Checked by:	Date:	8/4/09	MLF

CITY OF LA SALLE

ARRA Streets 2009
City of La Salle, IL

Plan View

Scale: 1"= 40'	Sheet 15 of 15
File: 090007900RS	