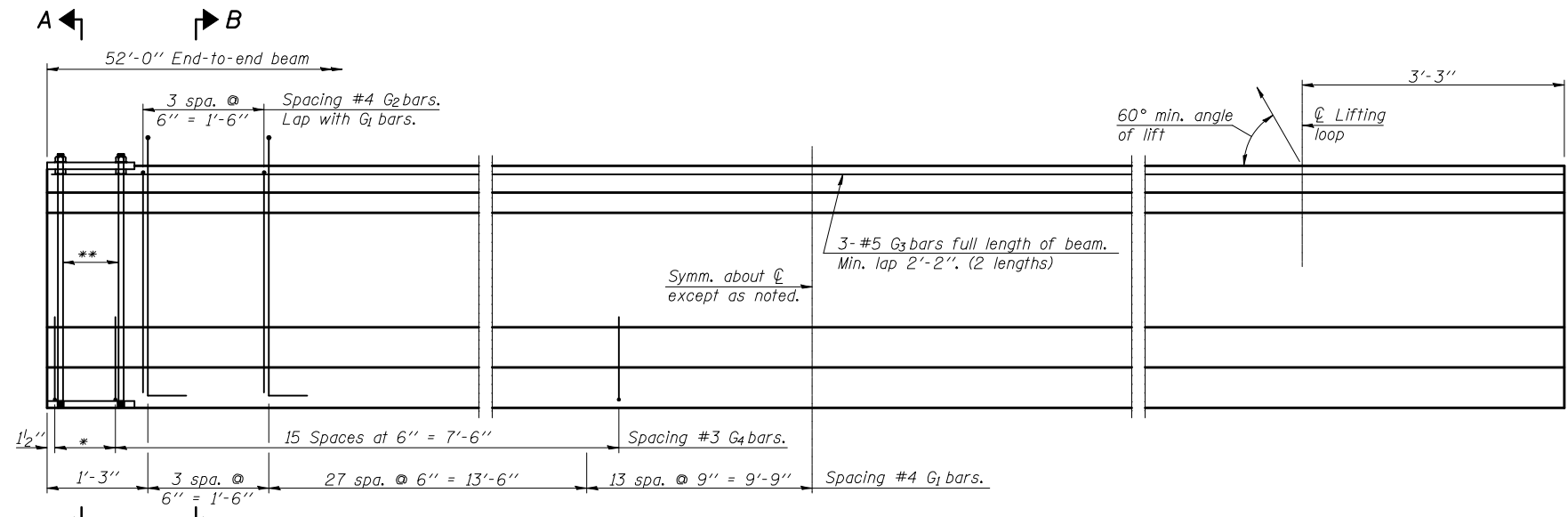


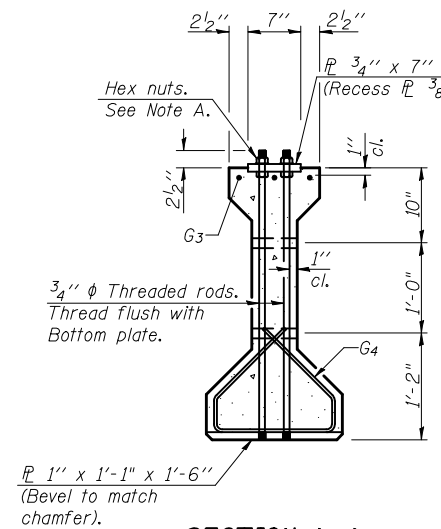
CONTRACT NO. 90932



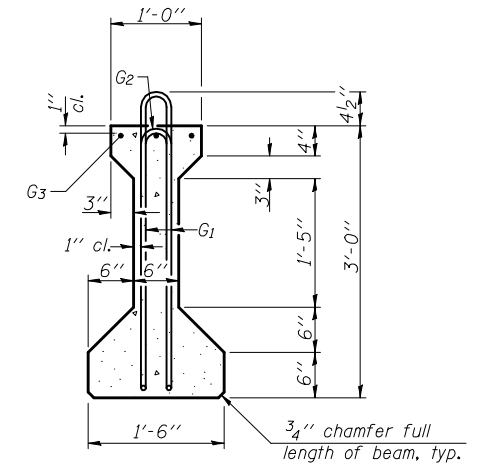
ELEVATION OF BEAM
(Showing reinforcement & dimensions)

* 3 spaces at 3" = 9".
** 4-3/4" φ threaded dowel rods at 3" cts., Each Face

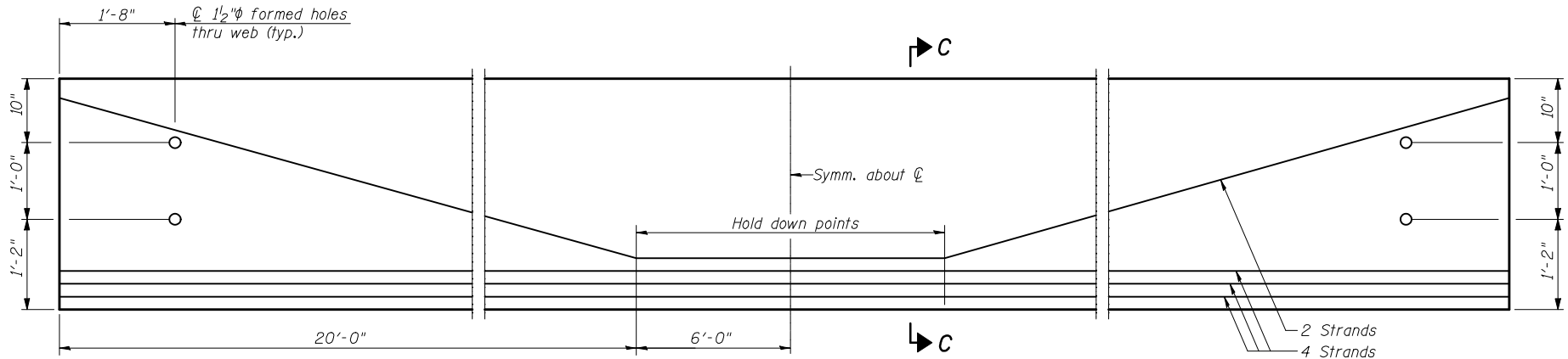
Note A:
Hex nuts (top and bottom) with lock washers (top). Only tighten sufficiently to compress lock washers.



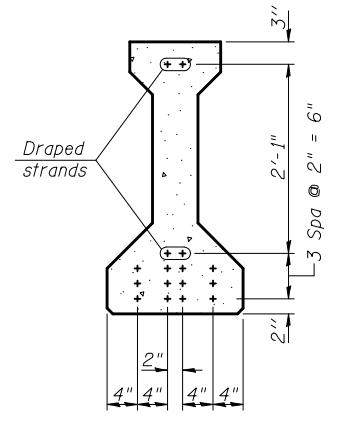
SECTION A-A



SECTION B-B



ELEVATION OF BEAM
(Showing prestressing steel)



SECTION C-C

*****BAR LIST
ONE BEAM ONLY**

Bar	No.	Size	Length	Shape
G1	87	#4	7'-5"	∩L
G2	8	#4	5'-8"	∩
G3	6	#5	27'-0"	—
G4	38	#3	4'-1"	∩

***For information only

Notes:
See sheet 9 of 14 for additional details and Bill of Material.
Required release strength, f'ci, shall be 5000 psi.

REVISIONS	
NAME	DATE

ILLINOIS DEPARTMENT OF TRANSPORTATION
36" PPC I-BEAM
IL. ROUTE 10 OVER UN-NAMED CREEK
FAP RTE. 717 SECTION 110BR
STA. 738+60
DEWITT COUNTY STR. No. 020-0061
SCALE: N.T.S. DRAWN BY
DATE MAY 2009 CHECKED BY MJS

TUG PROJ. # PRJ010
PLOT DATE = 10/15/2009 8:15 AM
FILE NAME = #FILE#

PI-4-36 10-1-08