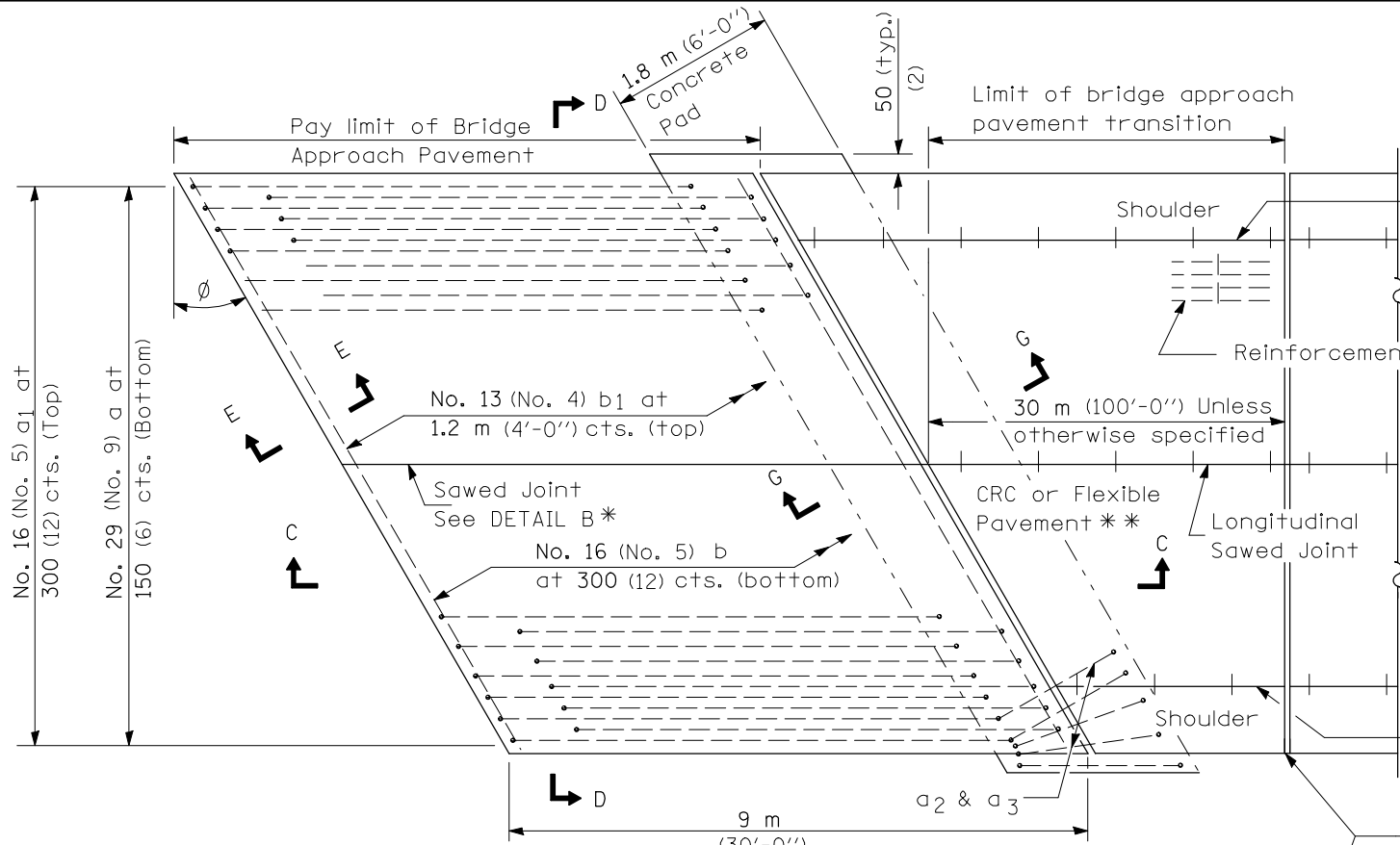


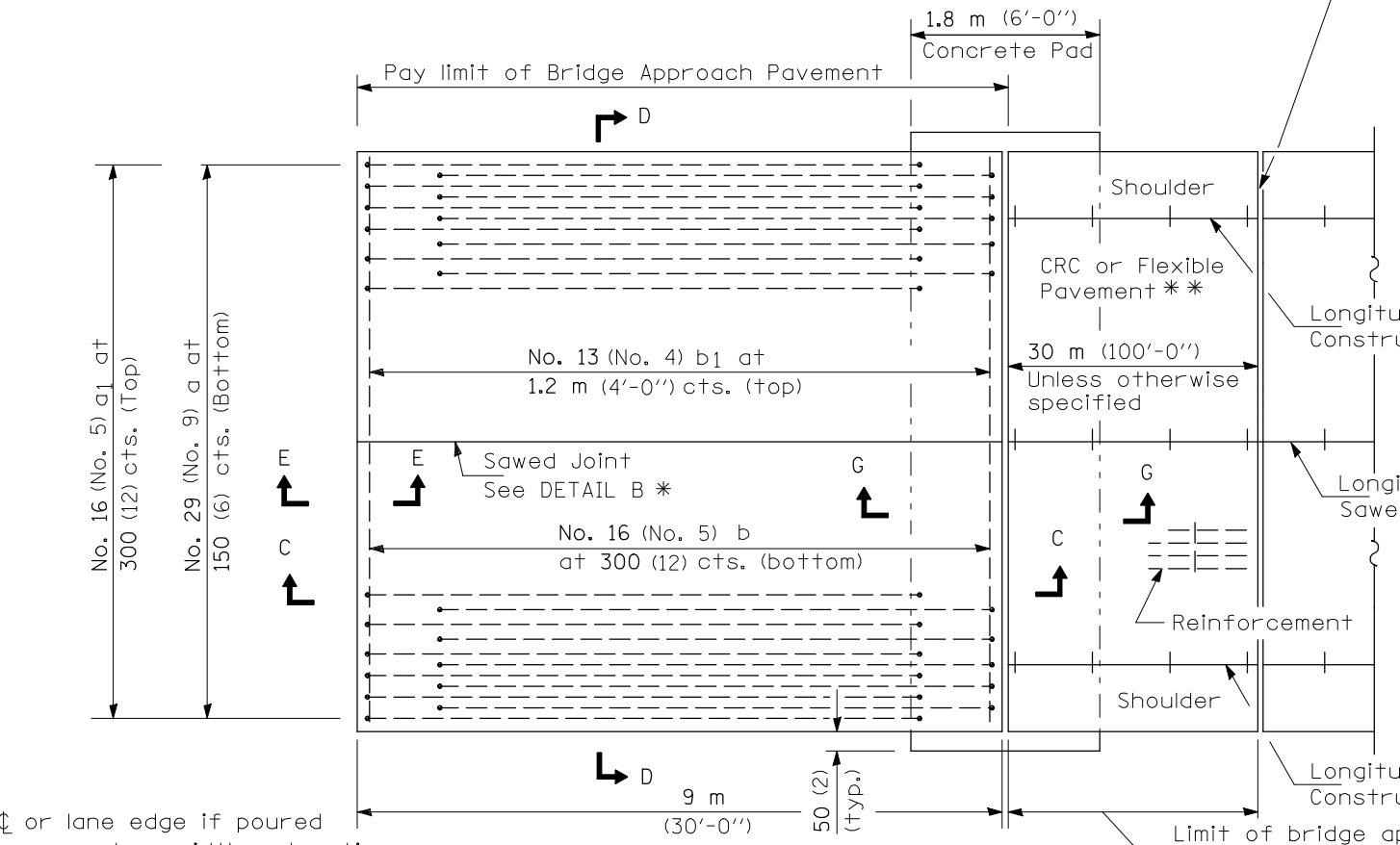
F.A.P. RTE.	SECTION	COUNTY	TOTAL SHEETS	SHEET NO.
717	110BR	DEWITT	40	30
STA. 736+00		TO STA. 741+00		
FED. ROAD DIST. NO. 5 ILLINOIS FED. AID PROJECT				

**CONTRACT NO. 90932**

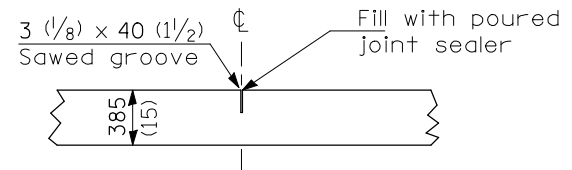
**NEW CONSTRUCTION**



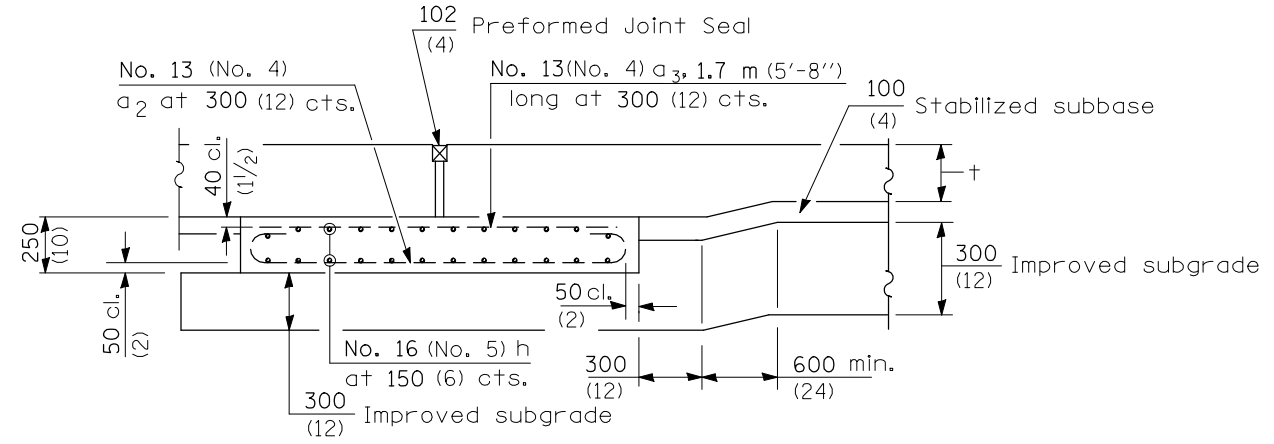
**PLAN - WITH SKEW**



**PLAN - WITHOUT SKEW**



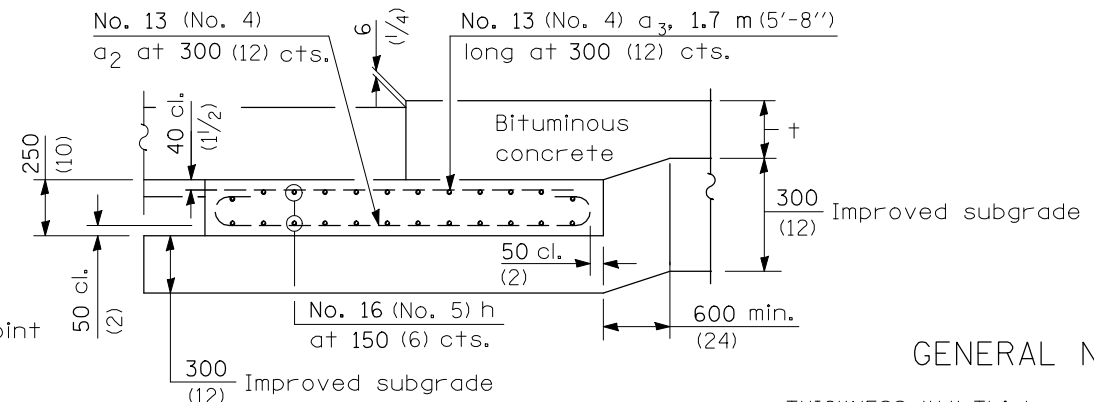
**DETAIL B\***



**SECTION G-G - RIGID PAVEMENT**

(Showing reinforcement)

Rigid Pavement only:  
Wide Flange Beam Terminal Joint (See DETAIL AT BEAM - Standard 421101 or 421106) or 50 (2)  
Trans. Exp. Joint as detailed on Standard 420001.



**SECTION G-G - FLEXIBLE PAVEMENT**

(Showing reinforcement)

**GENERAL NOTES**

- THICKNESS-''t''=Thickness of Pavement.
- See Standard 421001 for reinforcement details not shown.
- See Standard 420001 for joint details not shown.
- All dimensions are in millimeters (inches) unless otherwise shown.

REVISIONS	
NAME	DATE

ILLINOIS DEPARTMENT OF TRANSPORTATION  
**BRIDGE APPROACH PAVEMENT (1 OF 4)**  
**IL. ROUTE 10 OVER UN-NAMED CREEK**  
**FAP RTE. 717 SECTION 110BR**  
**DEWITT COUNTY**

SCALE: 1" = 20'  
DATE: MAY 2009  
DRAWN BY: RMH  
CHECKED BY: MJS

TUG PROJ. # PRJN08  
PLOT DATE = 10/15/2009 8:15 AM  
FILE NAME = #FILE#

\* Saw  $\phi$  or lane edge if poured two or more lane widths at a time.  
\* \* Omit Reinforcement, tie bars and Long. sawed Jt. for Flexible Pavement.