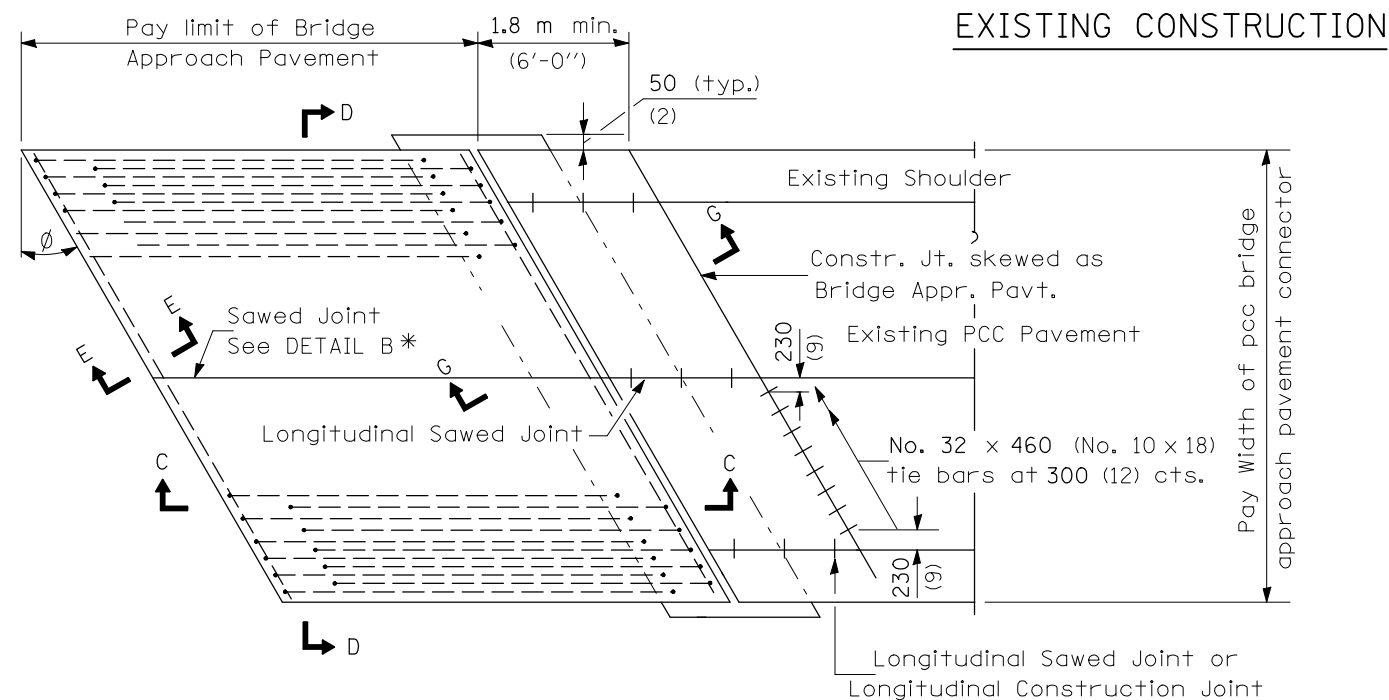
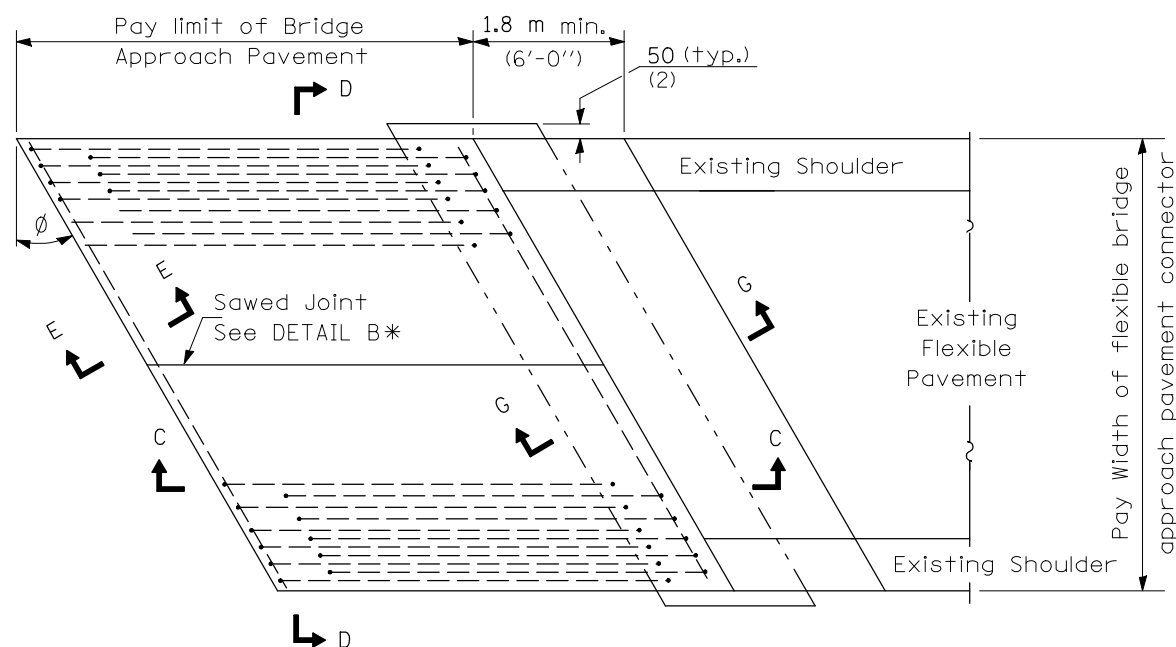


F.A.P. RTE.	SECTION	COUNTY	TOTAL SHEETS	SHEET NO.
717	110BR	DEWITT	40	31
STA. 736+00		TO STA. 741+00		
FED. ROAD DIST. NO. 5 ILLINOIS FED. AID PROJECT				

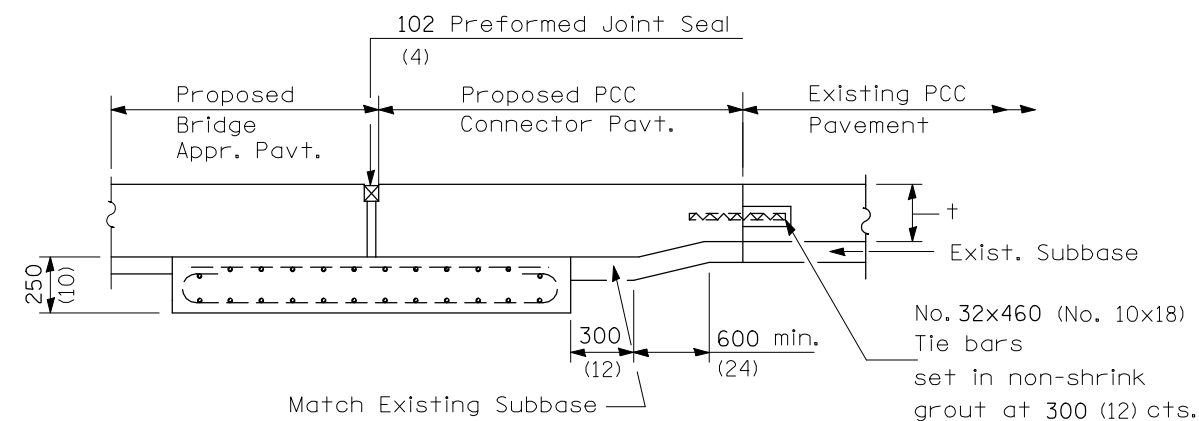
CONTRACT NO. 90932



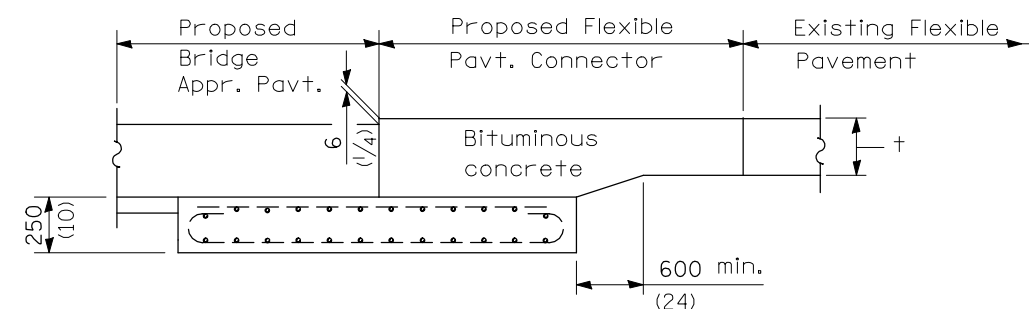
BRIDGE APPROACH PAVEMENT CONNECTOR (PCC)



BRIDGE APPROACH PAVEMENT CONNECTOR (FLEXIBLE)



SECTION G-G - RIGID PAVEMENT



SECTION G-G - FLEXIBLE PAVEMENT

All dimensions are in millimeters (inches) unless otherwise shown.

REVISIONS	
NAME	DATE

ILLINOIS DEPARTMENT OF TRANSPORTATION
BRIDGE APPROACH PAVEMENT (2 OF 4)
IL. ROUTE 10 OVER UN-NAMED CREEK
FAP RTE. 717 SECTION 110BR
DEWITT COUNTY

SCALE: 1" = 20'
DATE: MAY 2009

DRAWN BY: RMH
CHECKED BY: MJS

TUG PROJ. * #PRJNO# *
PLOT DATE = 10/15/2009 *TIME#
FILE NAME = #FILE#