

STATE OF ILLINOIS  
DEPARTMENT OF TRANSPORTATION  
DIVISION OF HIGHWAYS  
**PLANS FOR PROPOSED  
ROADWAY IMPROVEMENTS**

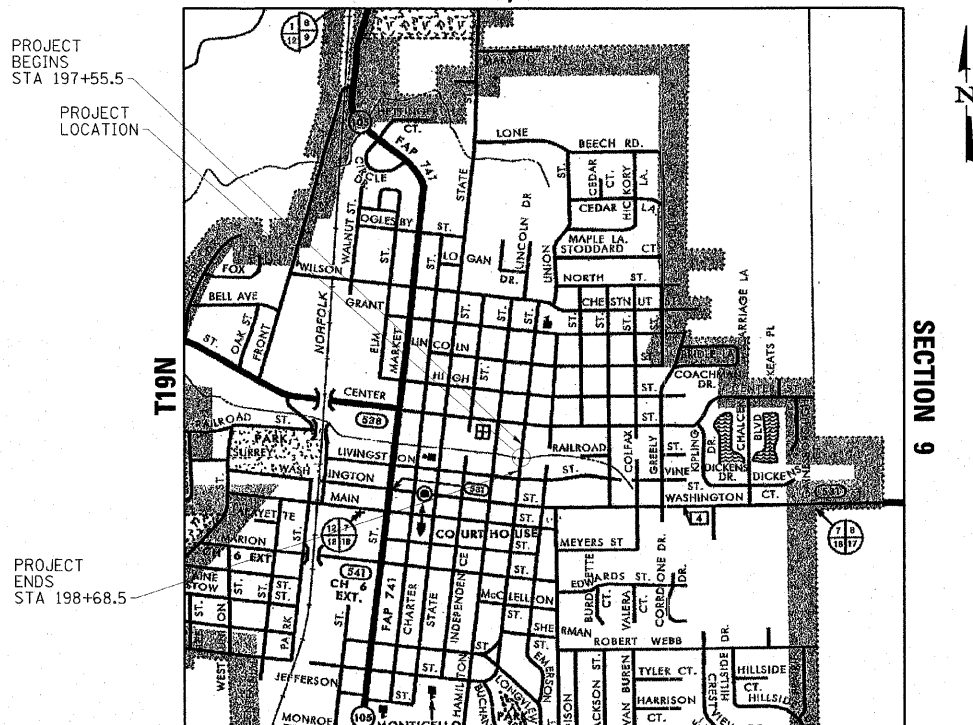
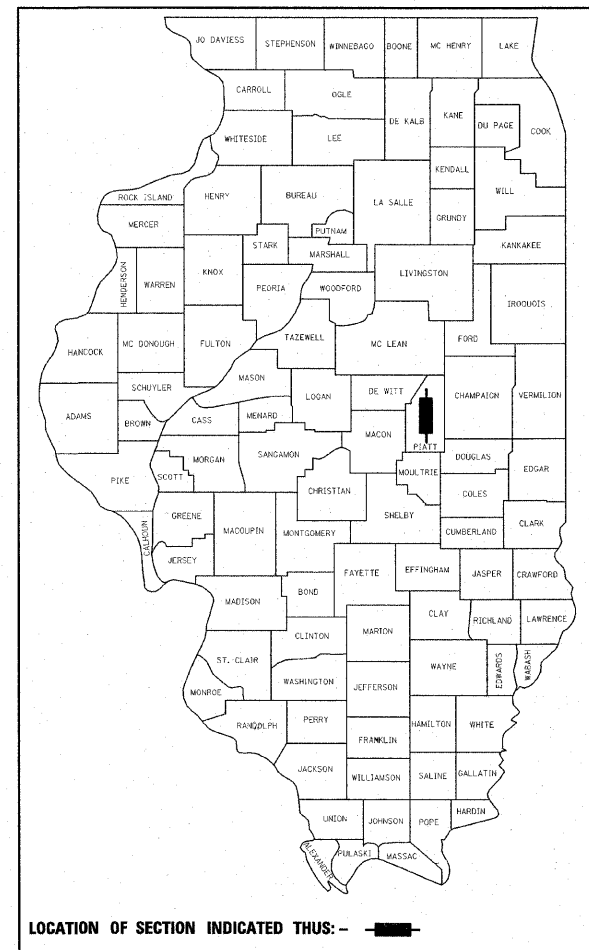
**INDEX OF SHEETS**

SHEET NO.	DESCRIPTION
<b>ROADWAY PLANS</b>	
1.	COVER SHEET
2.	GENERAL NOTES AND SUMMARY OF QUANTITIES
3.-4.	TYPICAL SECTIONS
5.	SCHEDULES OF QUANTITIES
6.	REMOVAL PLAN
7.	IMPROVEMENT PLAN
8.	TRAFFIC CONTROL FOR ROAD CLOSURE
9.	DETAILS
10.	GRATING FOR CONCRETE FLARED END SECTION

**STANDARDS (BEING UTILIZED)**

NUMBER	DESCRIPTION
000001-05	STANDARD SYMBOLS, ABBREVIATIONS AND PATTERNS
001001-02	AREAS OF REINFORCEMENT BARS
001006	DECIMAL OF AN INCH AND OF A FOOT
420001-07	PAVEMENT JOINTS
442201-03	CLASS C AND D PATCHES
542301-02	PRECAST REINFORCED CONCRETE FLARED END SECTION
606001-04	CONCRETE CURB TYPE B AND COMBINATION CONCRETE CURB AND GUTTER
701001-02	OFF-ROAD OPERATIONS, 2L, 2W, MORE THAN 4.5m (15') AWAY
701006-03	OFF-ROAD OPERATIONS, 2L, 2W, 4.5m (15') TO 600mm (24") FROM PAVEMENT EDGE
701301-03	LANE CLOSURE, 2L, 2W, SHORT TIME OPERATIONS
701901-01	TRAFFIC CONTROL DEVICES

**FAU 7543 (BUCHANAN STREET)  
SECTION 05-00022-01-DR  
CULVERT REPLACEMENT  
CITY OF MONTICELLO  
JOB NO. C-95-340-09  
PROJECT NO. ARA-5090(001)  
PIATT COUNTY  
R6E, 3RD PM**

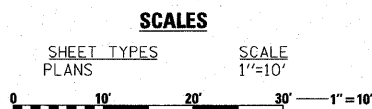


**LOCATION MAP**



**FAU 7543  
FUNCTIONAL CLASSIFICATION: MINOR ARTERIAL (URBAN)  
CURRENT ADT: 2150**

**GROSS LENGTH = 113 FT. = 0.021 MI.  
NET LENGTH = 113 FT. = 0.021 MI.**



FULL SIZE PLANS HAVE BEEN PREPARED USING STANDARD ENGINEERING SCALES. REDUCED SIZED PLANS WILL NOT CONFORM TO STANDARD SCALES. IN MAKING MEASUREMENTS ON REDUCED PLANS, THE ABOVE SCALES MAY BE USED.

**J.U.L.I.E.**  
JOINT UTILITY LOCATION INFORMATION FOR EXCAVATION  
1-800-892-0123  
OR 811

**CITY OF MONTICELLO  
(217)762-2583**

**CONTRACT NO. 91420**



*Richard D. Payne* DATE: 07/23/09  
ILLINOIS PROFESSIONAL LICENSE NO. 37421  
(EXPIRATION DATE: 11-30-09)

**DESIGN GUIDELINES: 3R  
DESIGN SPEED: 30 MPH**

APPROVED 07/27 20 09  
*Christopher K. Coi*  
MAYOR/CITY OF MONTICELLO

PASSED 10/7 20 09  
*David A. Seal*  
DISTRICT FIVE ENGINEER OF LOCAL ROADS & STREETS

RELEASED FOR BID  
BASED ON LIMITED  
REVIEW 10/08 20 09  
*Joseph E. Lawrence*  
DEPUTY DIRECTOR OF HIGHWAYS, REGION THREE ENGINEER

STATE OF ILLINOIS  
DEPARTMENT OF TRANSPORTATION

**PRINTED BY THE AUTHORITY  
OF THE STATE OF ILLINOIS**

**GENERAL NOTES**

- ALL SAWCUTTING SHALL BE CONSIDERED INCLUDED IN THE PAY ITEMS INVOLVED. THE MINIMUM SAW DEPTH IN THE PAVEMENT SHALL BE 1/2".
- THE FOLLOWING RATES OF APPLICATION HAVE BEEN USED IN CALCULATING PLAN QUANTITIES:  
GRANULAR MATERIALS 2.05 TON/CU YD
- ABANDONED UNDERGROUND UTILITIES THAT CONFLICT WITH CONSTRUCTION SHALL BE DISPOSED OF OUTSIDE THE LIMITS OF THE RIGHT OF WAY ACCORDING TO ARTICLE 202.03 OF THE STANDARD SPECIFICATIONS AND AS DIRECTED BY THE ENGINEER. THIS WORK WILL NOT BE PAID FOR SEPARATELY BUT SHALL BE INCLUDED IN THE COST OF EARTH EXCAVATION.
- ALL DISTURBED AREAS WITHIN THE CONSTRUCTION LIMITS SHALL BE FERTILIZED AND SEEDED OR SODDED. SEEDING SHALL BE CLASS 1A AND SHALL NOT BE PERMITTED AT ANY TIME WHEN THE GROUND IS FROZEN, WET, OR IN AN UNTILLABLE CONDITION. LOCATIONS TO BE SEEDED WILL BE DETERMINED BY THE ENGINEER.
- THE CONTRACTOR SHALL BE RESPONSIBLE FOR PROTECTING UTILITY PROPERTY FROM CONSTRUCTION OPERATIONS AS OUTLINED IN ARTICLE 107.31 OF THE STANDARD SPECIFICATIONS. THE CONTRACTOR SHALL CONTACT J.U.L.I.E. AT LEAST 48 HOURS PRIOR TO EXCAVATION TO DETERMINE WHICH UTILITIES ARE IN THE AREA.
- ALL WORK SHALL BE IN ACCORDANCE WITH IDOT'S STANDARD SPECIFICATIONS FOR ROAD AND BRIDGE CONSTRUCTION ADOPTED JANUARY 1, 2007 AND THE SUPPLEMENTAL SPECIFICATIONS AND RECURRING SPECIAL PROVISIONS ADOPTED JANUARY 1, 2009 UNLESS NOTED IN THE DRAWINGS OR SPECIAL PROVISIONS.
- UTILITY LINES WERE PLOTTED FROM INFORMATION FURNISHED BY THE VARIOUS UTILITY COMPANIES INVOLVED AND THEIR ACCURACY SHOULD BE CONSIDERED APPROXIMATE ONLY. THESE UTILITY COMPANIES MAY BE ADJUSTING THEIR FACILITIES DURING CONSTRUCTION. THE CONTRACTOR SHALL COOPERATE WITH THESE ORGANIZATIONS WHILE THESE ADJUSTMENTS ARE BEING PERFORMED. J.U.L.I.E. - JOINT UTILITY LOCATION INFORMATION FOR EXCAVATORS SYSTEM (800) 892-0123. THE FOLLOWING UTILITY OWNERS MARKED WITH AN "\*" BELONG TO J.U.L.I.E. :
  - AMEREN IP
  - MEDIACOM
  - CITY OF MONTICELLO
- THE CONTRACTOR SHALL DIVERT WATER AND DEWATER THE SITE AS NECESSARY TO COMPLETE THE WORK. THIS WORK WILL NOT BE PAID FOR SEPARATELY BUT SHALL BE CONSIDERED INCLUDED IN PIPE CULVERTS.
- THE CITY PARK ON THE WEST SIDE OF BUCHANAN STREET SHALL NOT BE DISTURBED BY CONSTRUCTION OPERATIONS DURING THIS PROJECT. THE CORRUGATED METAL PIPE ARCH EXTENSION WILL HAVE TO BE INSERTED INTO THE END OF THE EXISTING ARCH; AN OPEN CUT WITHIN PARK PROPERTY WILL NOT BE ALLOWED.
- THE EXISTING BRICK ARCH STRUCTURE SHALL BE REMOVED AS REQUIRED FOR CONSTRUCTION OF THE PROPOSED CULVERT. PORTIONS OF THE ARCH THAT DO NOT CONFLICT WITH WORK WILL BE ALLOWED TO REMAIN IN PLACE. THE CONTRACTOR IS ADVISED THAT THE EXISTING STRUCTURE IS IN A DETERIORATED CONDITION AND MAY BE SUBJECT TO COLLAPSE ONCE EXCAVATION OR REMOVAL OPERATIONS BEGIN. THE EXCAVATION SHOWN ON THE TOP AND ON THE SIDES OF THE ARCH SHALL BE DONE PRIOR TO REMOVAL OF THE EXISTING BRICK STRUCTURE AND PRIOR TO EXCAVATION IN THE CHANNEL.
- CONTROLLED LOW STRENGTH MATERIAL IS TO BE USED TO BACKFILL UNDER THE REMAINING ARCH AS SHOWN. THE CONTRACTOR SHALL ACCOUNT FOR BUOYANCY FORCES ACTING ON THE PROPOSED PIPES AND STAGE THE CLSM POURS ACCORDINGLY. PRIOR TO THE POURS, THE PIPES SHALL BE ADEQUATELY BRACED TO RESIST FLOTATION AND DAMAGE. ANY DAMAGE AS A RESULT SHALL BE REPAIRED OR REPLACED AT THE CONTRACTOR'S EXPENSE. THIS WORK IS INCLUDED IN THE COST OF CONTROLLED LOW STRENGTH MATERIAL AND NO ADDITIONAL COMPENSATION WILL BE ALLOWED.
- THE CONTRACTOR SHALL FIELD VERIFY ALL DIMENSIONS AND EXISTING CONDITIONS PRIOR TO ORDERING MATERIALS. ADJUSTMENTS SHALL BE MADE TO THE STATIONS AND WORK LIMITS SHOWN TO FIT THE LOCATION OF THE EXISTING ARCH AS DIRECTED BY THE ENGINEER.

**SUMMARY OF QUANTITIES**

CODE NO.	ITEM	UNIT	TOTAL
			Y007
20100210	TREE REMOVAL (OVER 15 UNITS DIAMETER)	UNIT	34
20200100	EARTH EXCAVATION	CU YD	130
20201200	REMOVAL AND DISPOSAL OF UNSUITABLE MATERIAL	CU YD	45
20800150	TRENCH BACKFILL	CU YD	170
Δ 21101625	TOPSOIL FURNISH AND PLACE, 6"	SQ YD	170
Δ 25000110	SEEDING, CLASS 1A	ACRE	0.07
Δ 25000400	NITROGEN FERTILIZER NUTRIENT	POUND	10
Δ 25000500	PHOSPHORUS FERTILIZER NUTRIENT	POUND	10
Δ 25000600	POTASSIUM FERTILIZER NUTRIENT	POUND	10
Δ 25100115	MULCH, METHOD 2	ACRE	0.07
Δ 25200110	SODDING, SALT TOLERANT	SQ YD	130
28000500	INLET AND PIPE PROTECTION	EACH	1
28100107	STONE RIPRAP, CLASS A4	SQ YD	200
28200200	FILTER FABRIC	SQ YD	200
31100100	SUB-BASE GRANULAR MATERIAL, TYPE A	TON	70
40200800	AGGREGATE SURFACE COURSE, TYPE B	TON	20
42400200	PORTLAND CEMENT CONCRETE SIDEWALK 5 INCH	SQ FT	510
44000500	COMBINATION CURB AND GUTTER REMOVAL	FOOT	84
44000600	SIDEWALK REMOVAL	SQ FT	510
44201347	CLASS C PATCHES, TYPE IV, 9 INCH	SQ YD	107
• 50100100	REMOVAL OF EXISTING STRUCTURES	EACH	1
542A0271	PIPE CULVERTS, CLASS A, TYPE 1 66"	FOOT	72
• 54213711	PRECAST REINFORCED CONCRETE FLARED END SECTIONS 66"	EACH	1
• 54247220	GRATING FOR CONCRETE FLARED END SECTION 66"	EACH	1
54248510	CONCRETE COLLAR	CU YD	11
550A0110	STORM SEWERS, CLASS A, TYPE 1 21"	FOOT	8
550A0120	STORM SEWERS, CLASS A, TYPE 1 24"	FOOT	8
550A0320	STORM SEWERS, CLASS A, TYPE 2 8"	FOOT	16
550A0340	STORM SEWERS, CLASS A, TYPE 2 12"	FOOT	32
55100200	STORM SEWER REMOVAL 6"	FOOT	5
55100300	STORM SEWER REMOVAL 8"	FOOT	5
55100400	STORM SEWER REMOVAL 10"	FOOT	15
55100500	STORM SEWER REMOVAL 12"	FOOT	5
55101100	STORM SEWER REMOVAL 21"	FOOT	5
55101200	STORM SEWER REMOVAL 24"	FOOT	5
59300100	CONTROLLED LOW-STRENGTH MATERIAL	CU YD	15
• 60611600	COMBINATION CONCRETE CURB AND GUTTER, (SPECIAL)	FOOT	84
67100100	MOBILIZATION	L SUM	1
Δ A2000116	TREE, ACER X FREEMANII AUTUMN BLAZE (AUTUMN BLAZE FREEMAN MAPLE), 2" CALIPER, BALLED AND BURLAPPED	EACH	2
• X7013015	TRAFFIC CONTROL FOR ROAD CLOSURE	L SUM	1
• X7015005	CHANGEABLE MESSAGE SIGN	CAL DA	16
• XX000717	STORM SEWER CONNECTION, SPECIAL	EACH	8
• XX008267	PIPE CULVERTS, SPECIAL	FOOT	8
• Z0013798	CONSTRUCTION LAYOUT	L SUM	1
• Z0054400	ROCK FILL	CU YD	17

\* SPECIAL PROVISION REQUIRED

Δ SPECIALTY ITEMS

USER = HAS  
DATE = 9/22/2009  
FILE = 71514\_502\_Civil.dgn  
SCALE = 0.0084

**ESCA**  
CONSULTANTS, INC.

DESIGNED BY:	ELH	07/02/09	SCALE:	NONE	NO.	DATE	REVISION	APVD
DRAWN BY:	KAH	07/02/09	DATE:	08/09/2009				
CHECKED BY:	ELH	07/02/09	JOB NO.	719.34				
APPROVED BY:	RDP	07/02/09						

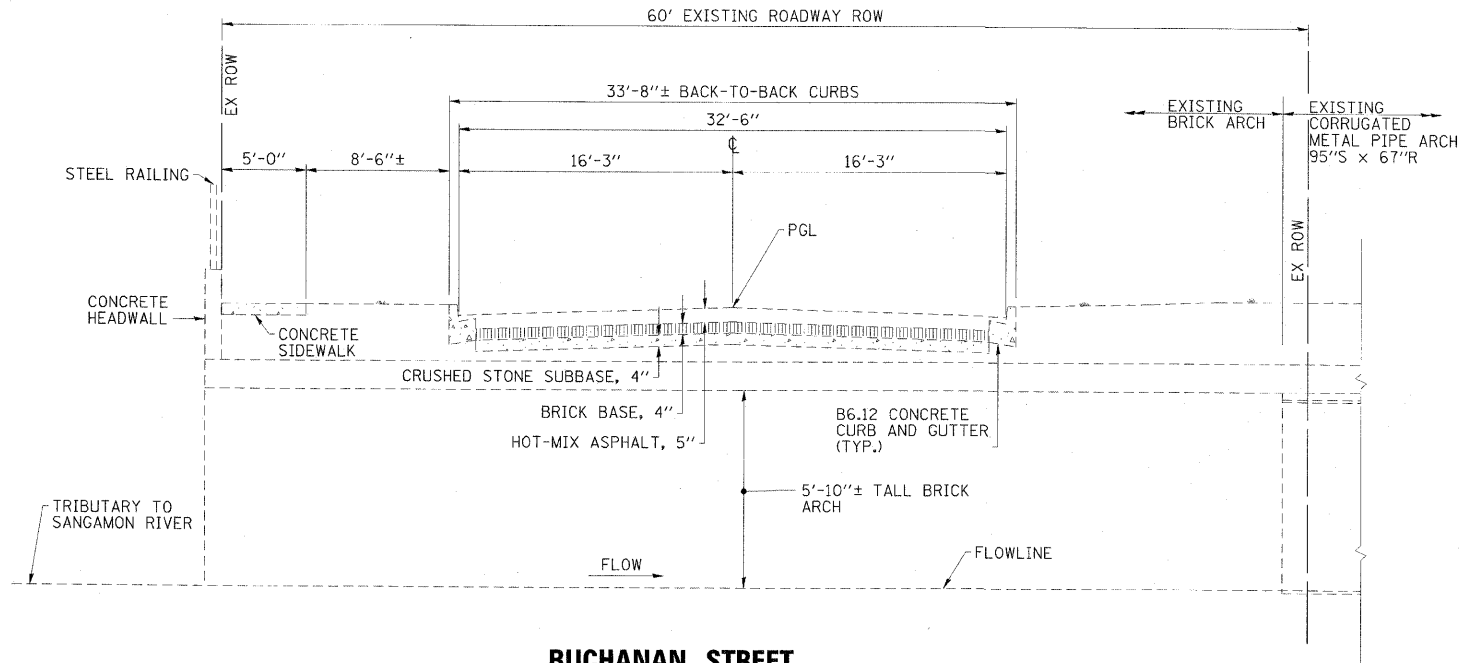
BUCHANAN STREET STRUCTURE  
CITY OF MONTICELLO

GENERAL NOTES AND  
SUMMARY OF QUANTITIES

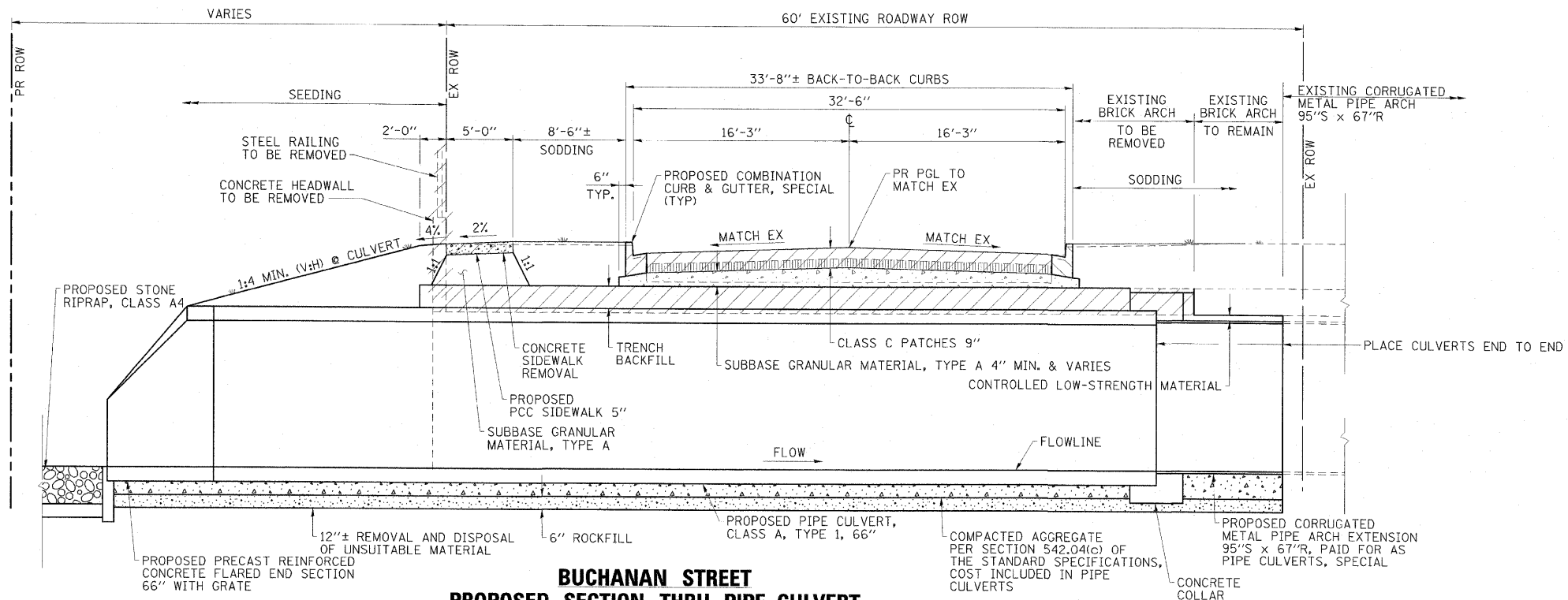
DRAWING NUMBER

2

2 OF 10



**BUCHANAN STREET  
EXISTING SECTION THRU ARCH STRUCTURE  
LOOKING SOUTH**  
(AT RIGHT ANGLES TO  $\text{\textcircled{C}}$  ROADWAY)



**BUCHANAN STREET  
PROPOSED SECTION THRU PIPE CULVERT  
LOOKING SOUTH**  
(AT RIGHT ANGLES TO  $\text{\textcircled{C}}$  ROADWAY)

USER: mh5  
DATE: 08/09/2009  
TIME: 11:04:24 AM  
FILE: 71934.503.CVL.dgn  
SCALE: 1/8" = 1'-0"

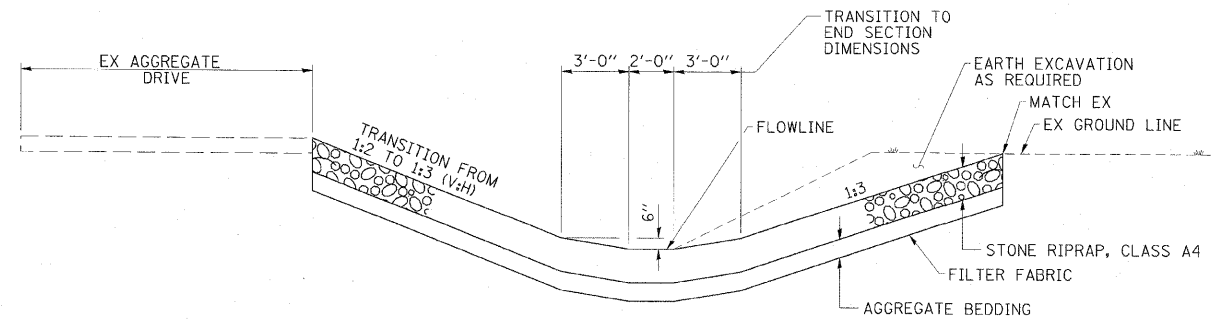
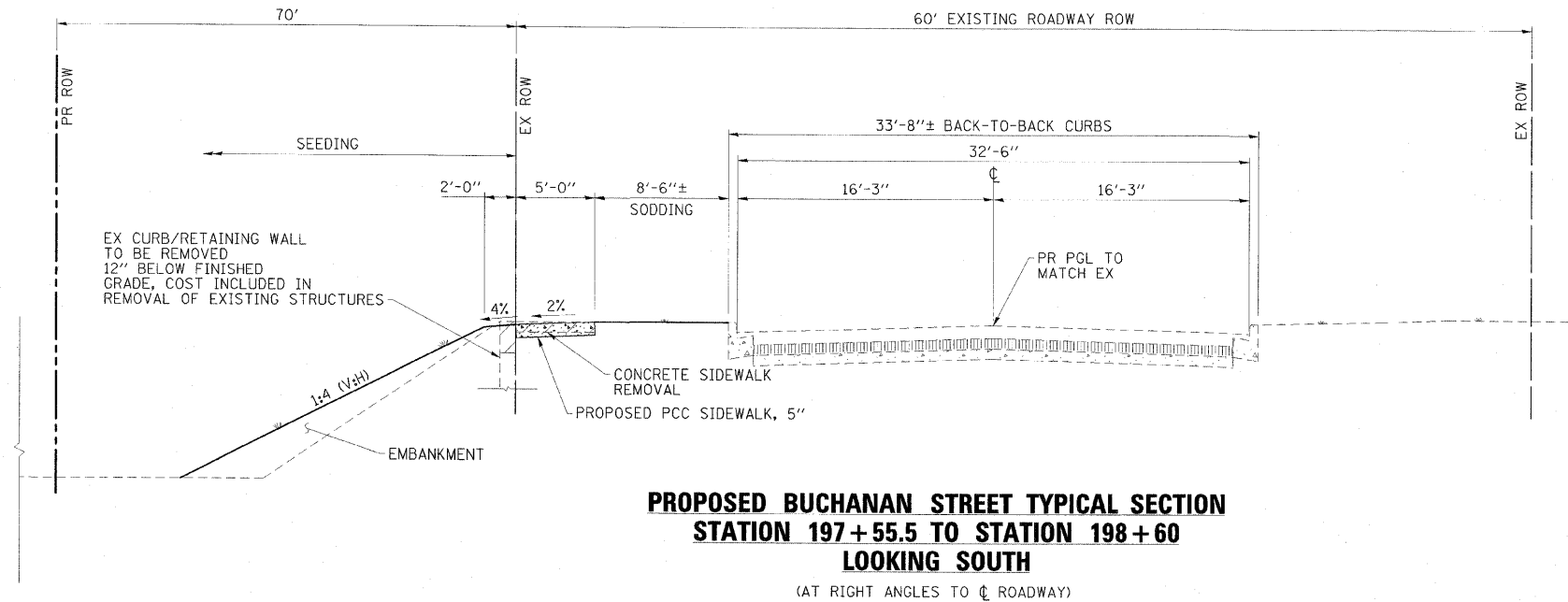
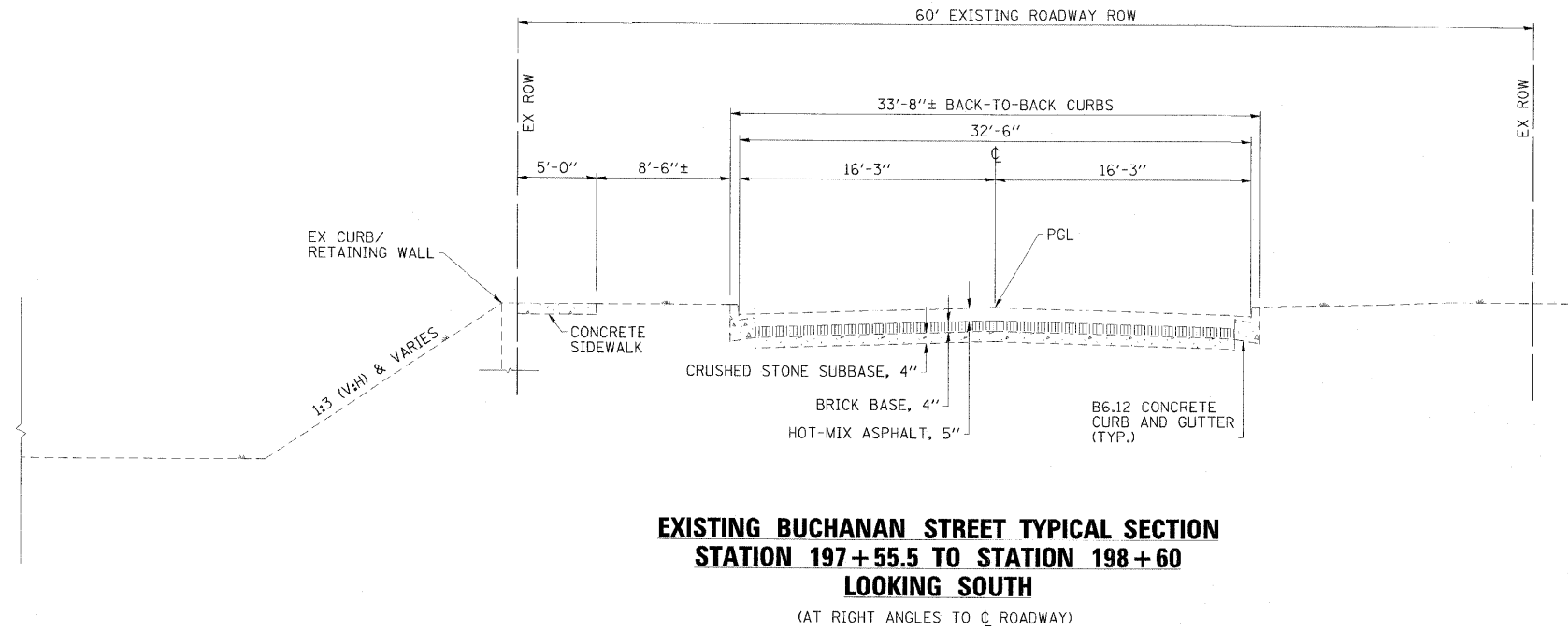
**ESCA**  
CONSULTANTS, INC.

DESIGNED BY:	ELH	07/09	SCALE:	NONE	NO.	DATE	REVISION	APVD
DRAWN BY:	JPC	07/09	DATE:	08/09/2009				
CHECKED BY:	ELH	07/09	JOB NO.	719.34				
APPROVED BY:	RDP	07/09						

BUCHANAN STREET STRUCTURE  
CITY OF MONTICELLO

TYPICAL SECTIONS

DRAWING NUMBER  
**3**  
3 OF 10



USER: h45\_0909  
 TIME: 11:04:47 AM  
 FILE: 71934\_504\_LV.dgn  
 SCALE: 0.0000 / 1.00

**ESCA**  
 CONSULTANTS, INC.

DESIGNED BY:	ELH	07/09	SCALE:	NONE	NO.	DATE	REVISION	APVD
DRAWN BY:	JPC	07/09	DATE:	08/09/2009				
CHECKED BY:	ELH	07/09	JOB NO.	719.34				
APPROVED BY:	RDP	07/09						

**BUCHANAN STREET STRUCTURE**  
 CITY OF MONTICELLO

TYPICAL SECTIONS

DRAWING NUMBER

4

4 OF 10

LANDSCAPE SCHEDULE								
LOCATION	TREE REMOVAL (OVER 15 UNITS DIA) (20100210)	TREE AUTUMN BLAZE FREEMAN MAPLE (A2000116)	SEEDING CLASS 1A (25000110)	NITROGEN FERT. NUTRIENT (25000400)	PHOSPHOR. FERT. NUTRIENT (25000500)	POTASS. FERT. NUTRIENT (25000600)	MULCH METHOD 2 (25100115)	SODDING SALT TOLERANT (25200110)
	UNIT	EACH	ACRE	POUND	POUND	POUND	ACRE	SQ YD
WEST SIDE BUCHANAN STREET	34			1	1	1		63
EAST SIDE BUCHANAN STREET BTWN SIDEWALK & CURB				1	1	1		67
EAST SIDE BUCHANAN STREET EAST OF SIDEWALK		2	0.07	8	8	8	0.07	
<b>TOTALS</b>	34	2	0.07	10	10	10	0.07	130

AGG SURF CSE TYPE B SCHEDULE (40200800)	
LOCATION	TON
REPAIR OF EX AGGREGATE DRIVE AS DIRECTED BY THE ENGINEER	20
<b>TOTAL</b>	20

CONCRETE SCHEDULE				
LOCATION	CLASS C PATCHES TYPE IV 9 IN (44201347)	COMB. CONC CURB AND GUTTER, (SPECIAL) (60611600)	PCC SIDEWALK 5" (42400200)	CONCRETE COLLAR (54248510)
	SQ YD	FOOT	SQ FT	CU YD
OVER PR CULVERT	107			
WEST SIDE OF CULVERT		42		
EAST SIDE OF CULVERT		42	510	
EX 10" VCP NW CORNER				0.5
EX 10" VCP NE CORNER				0.5
EX 24" RCP				1.0
EX 21" RCP				0.9
EX 12" RCP				0.6
EX 8" RCP				0.5
EX 10" RCP				0.5
EX 6" RCP				0.5
PR 66" DIA				6.0
<b>TOTALS</b>	107	84	510	11

EARTHWORK SCHEDULE					
LOCATION	EARTH EXCAVATION (20200100)	INCIDENTAL EXCAVATION	EXCAVATION TO BE USED IN EMBANKMENT ADJUSTED FOR SHRINKAGE	EMBANKMENT (NOT A PAY ITEM)	EARTHWORK BALANCE WASTE(+) OR SHORTAGE(-)
	CU YD	CU YD	CU YD	CU YD	CU YD
PIPE CULVERT TRENCH		216	162		+162
RIPRAP	130		98		+98
EAST OF SIDEWALK				203	-203
<b>TOTALS</b>	130	216	260	203	-57

EXCAVATION USED AS EMBANKMENT = (EARTH EXCAVATION+INCIDENTAL EXCAVATION)\*0.75

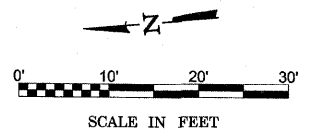
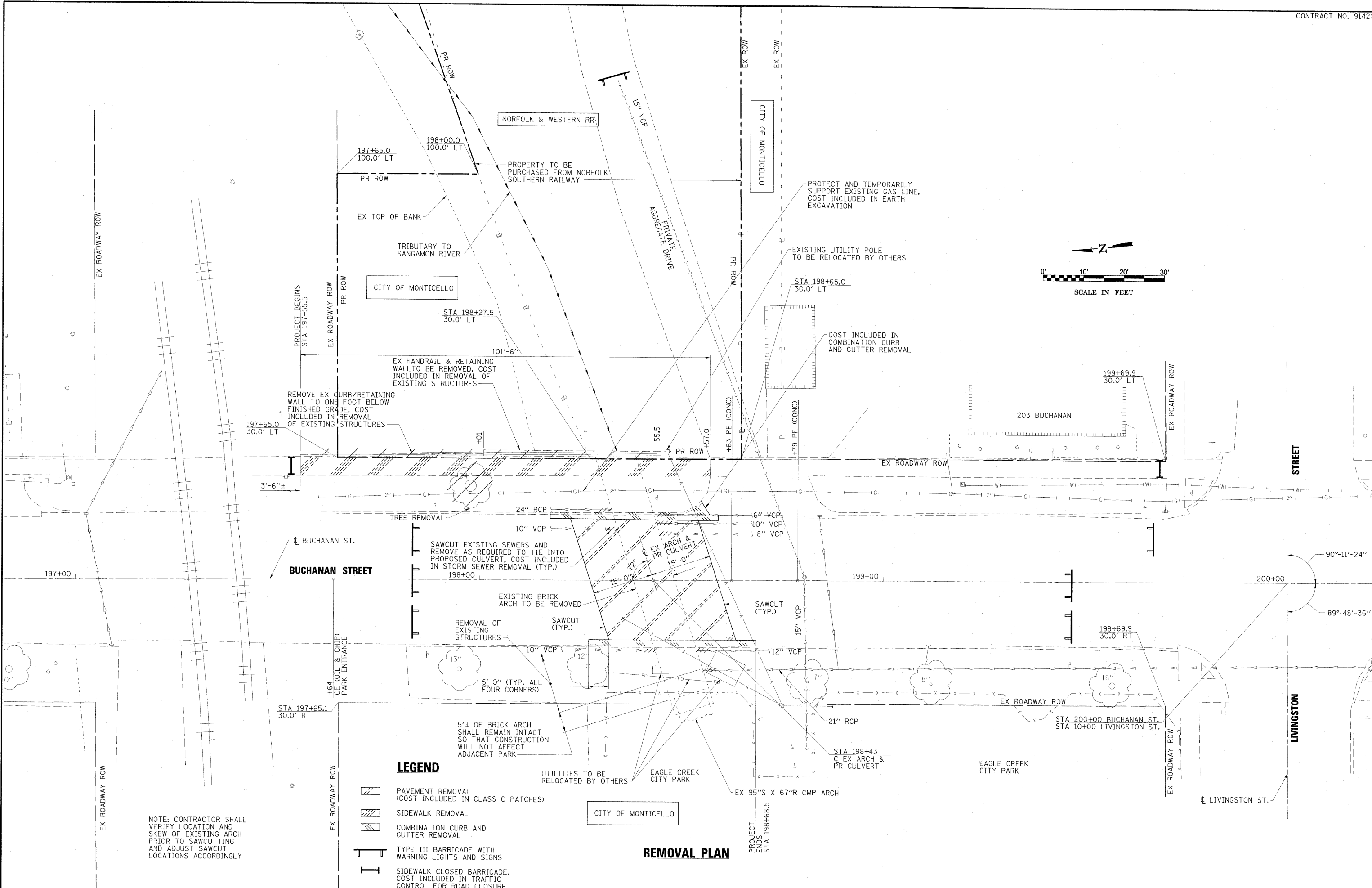
USER: MWS, 09/08/09  
 TIME: 11:05:53 AM  
 FILE: 71934-506\_CVL.dgn  
 PLOT: 07/23/09 7:19



DESIGNED BY:	ELH	07/23/09	SCALE:	NONE	NO.	DATE	REVISION	APVD
DRAWN BY:	KAH	07/23/09	DATE:	08/09/2009				
CHECKED BY:	ELH	07/23/09	JOB NO.	719.34				
APPROVED BY:	RDP	07/23/09						

BUCHANAN STREET STRUCTURE  
CITY OF MONTICELLO

SCHEDULES OF QUANTITIES

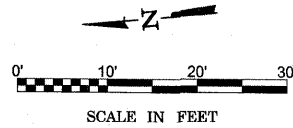
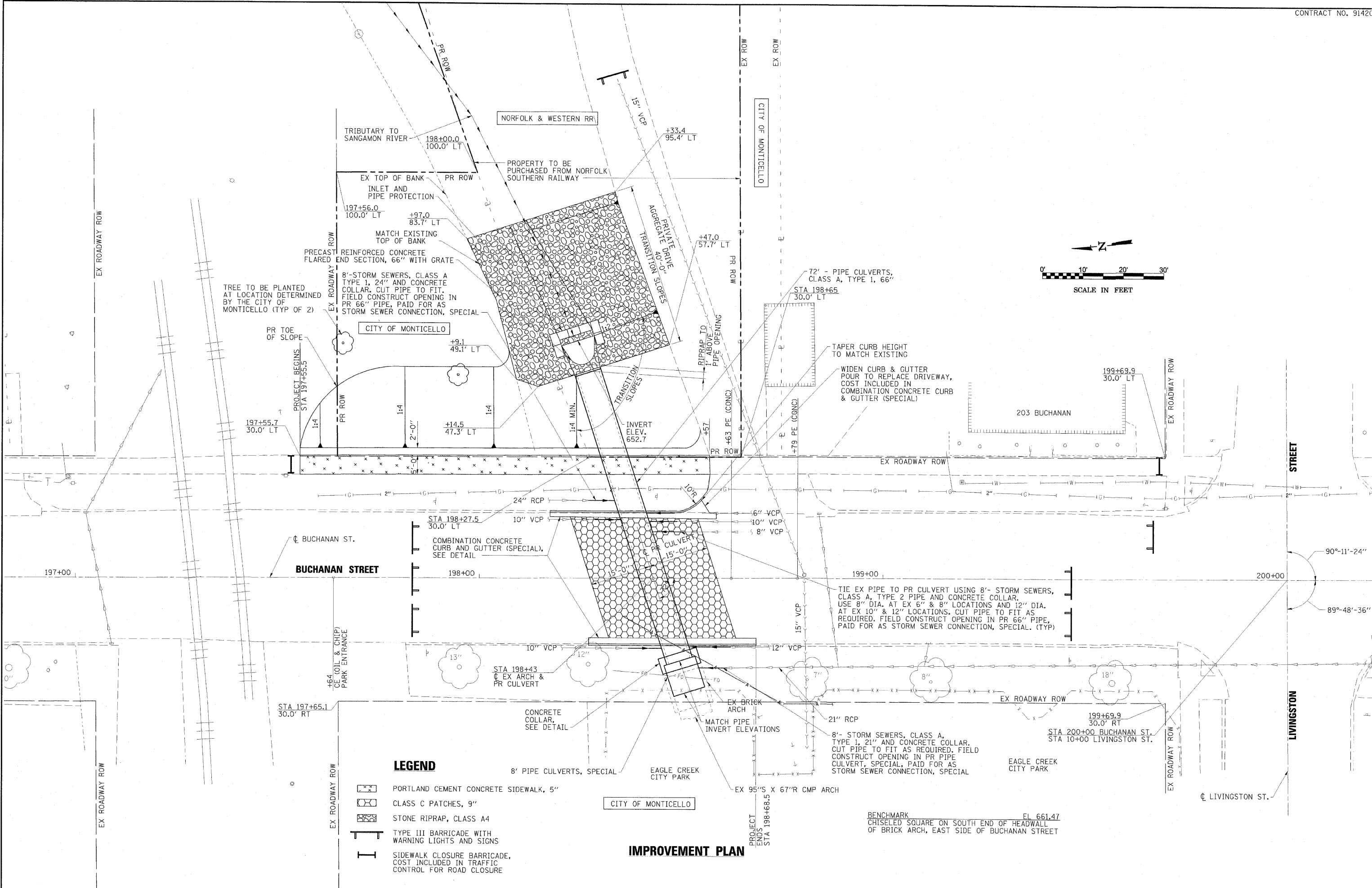


NOTE: CONTRACTOR SHALL VERIFY LOCATION AND SKEW OF EXISTING ARCH PRIOR TO SAWCUTTING AND ADJUST SAWCUT LOCATIONS ACCORDINGLY

- LEGEND**
- PAVEMENT REMOVAL (COST INCLUDED IN CLASS C PATCHES)
  - SIDEWALK REMOVAL
  - COMBINATION CURB AND GUTTER REMOVAL
  - TYPE III BARRICADE WITH WARNING LIGHTS AND SIGNS
  - SIDEWALK CLOSED BARRICADE, COST INCLUDED IN TRAFFIC CONTROL FOR ROAD CLOSURE

**REMOVAL PLAN**

DESIGNED BY:	ELH	07/02/09	SCALE:	1"=10'-0"	NO.	DATE	REVISION	APVD
DRAWN BY:	HAS	07/02/09	DATE:	08/09/2009				
CHECKED BY:	ELH	07/02/09	JOB NO.	719.34				
APPROVED BY:	RDP	07/02/09						



- LEGEND**
- PORTLAND CEMENT CONCRETE SIDEWALK, 5"
  - CLASS C PATCHES, 9"
  - STONE RIPRAP, CLASS A4
  - TYPE III BARRICADE WITH WARNING LIGHTS AND SIGNS
  - SIDEWALK CLOSURE BARRICADE, COST INCLUDED IN TRAFFIC CONTROL FOR ROAD CLOSURE

**IMPROVEMENT PLAN**

**ESCA**  
CONSULTANTS, INC.

DESIGNED BY:	ELH	07/02/09	SCALE:	1"=10'-0"	NO.	DATE	REVISION	APVD
DRAWN BY:	HAS	07/02/09	DATE:	08/09/2009				
CHECKED BY:	ELH	07/02/09	JOB NO.	719.34				
APPROVED BY:	RDP	07/02/09						

**BUCHANAN STREET STRUCTURE**  
CITY OF MONTICELLO

**IMPROVEMENT PLAN**


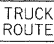





DRAWING NUMBER  
**7**  
7 OF 10

**NOTES**

1. ALL SIGNS ARE TO BE PROVIDED BY THE CONTRACTOR.
2. CONTRACTOR SHALL BE RESPONSIBLE FOR ERECTION, MAINTENANCE, AND REMOVAL OF ALL SIGNS.
3. ALL WORK SHOWN ON THIS SHEET AND ON THE PLAN SHEETS SHALL BE INCLUDED IN THE COST OF "TRAFFIC CONTROL FOR ROAD CLOSURE."
4. IN ADDITION TO THE SIGNS SHOWN, TWO PORTABLE CHANGEABLE MESSAGE SIGNS SHALL BE LOCATED ON BUCHANAN STREET FOR SEVEN DAYS PRIOR TO ROAD CLOSURE TO NOTIFY THE PUBLIC OF THE PENDING CLOSURE.
5. TYPE III BARRICADES, R11-2-4830 SIGNS, AND R11-4-6030 SIGNS SHALL BE POSITIONED AS SHOWN IN "ROAD CLOSED TO ALL TRAFFIC" AND "ROAD CLOSED TO THRU TRAFFIC" DETAILS ON HIGHWAY STANDARD 701901.
6. TWO TYPE A LOW INTENSITY FLASHING LIGHTS SHALL BE USED ON EACH BARRICADE DURING HOURS OF DARKNESS.
7. ALL SIGNS SHALL BE POST MOUNTED.
8. ALL WARNING SIGNS SHALL HAVE MINIMUM DIMENSIONS OF 36 x 36 AND HAVE A BLACK LEGEND ON AN ORANGE REFLECTORIZED BACKGROUND.
9. ALL WORK ZONE SIGNS ARE REQUIRED TO MEET, AS A MINIMUM, TYPE B REFLECTIVITY REQUIREMENTS OF TABLE 1091-2 IN ARTICLE 1091.02 OF THE STANDARD SPECIFICATIONS.

**SIGN NOTES & DETAILS**



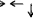


\* DIRECTIONAL ARROW SIGN, SEE PLAN FOR DIRECTIONS

- ① 60" BUCHANAN ST. CLOSED TO THRU TRAFFIC 30"
- ② REPLACE ← WITH ↑ NEXT TO I-57 SIGN.
- ③ COVER 
- ④ COVER 
- ⑤  ⑥ 
- ⑦ COVER 
- ⑧ TURN THRU TRUCK ROUTE ARROWS TO SOUTH
- ⑨ 
- ⑩ 



**TRAFFIC CONTROL PLAN**

**LEGEND**

-  PROPOSED POST MOUNTED SIGN
-  EXISTING SIGN TO BE MODIFIED
-  DIRECTIONAL ARROW SIGN
- ①, ②, ETC. SIGN NUMBER SEE DETAILS
-  ROAD CLOSED TO ALL TRAFFIC
-  ROAD CLOSED TO THRU TRAFFIC

USER: mhs  
 DATE: 07/23/2009  
 TIME: 15:14:00  
 FILE: 71934\_508\_CVI.dgn  
 SCALE: 1/8" = 1' / IN.

**ESCA**  
 CONSULTANTS, INC.

DESIGNED BY:	ELH	07/02/09	SCALE:	NONE	NO.	DATE
DRAWN BY:	KAH	07/02/09	DATE:	07/23/2009		
CHECKED BY:	ELH	07/02/09	JOB NO.	719.34		
APPROVED BY:	RDP	07/02/09				

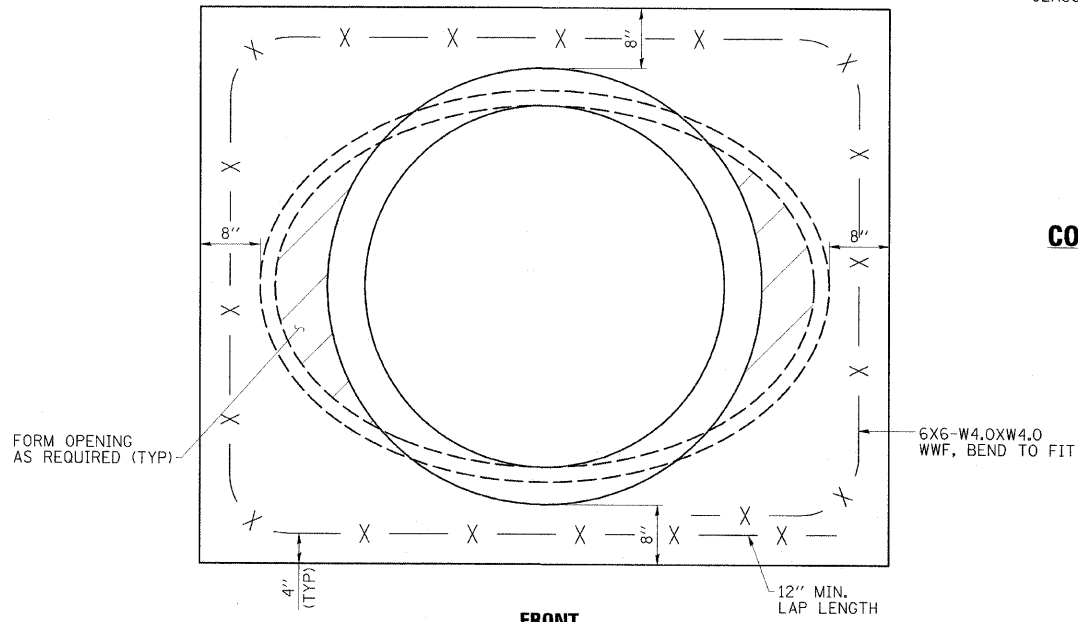
REVISION	APVD

**BUCHANAN STREET STRUCTURE**  
 CITY OF MONTICELLO

**TRAFFIC CONTROL FOR**  
 ROAD CLOSURE

DRAWING NUMBER  
**8**  
 8 OF 10

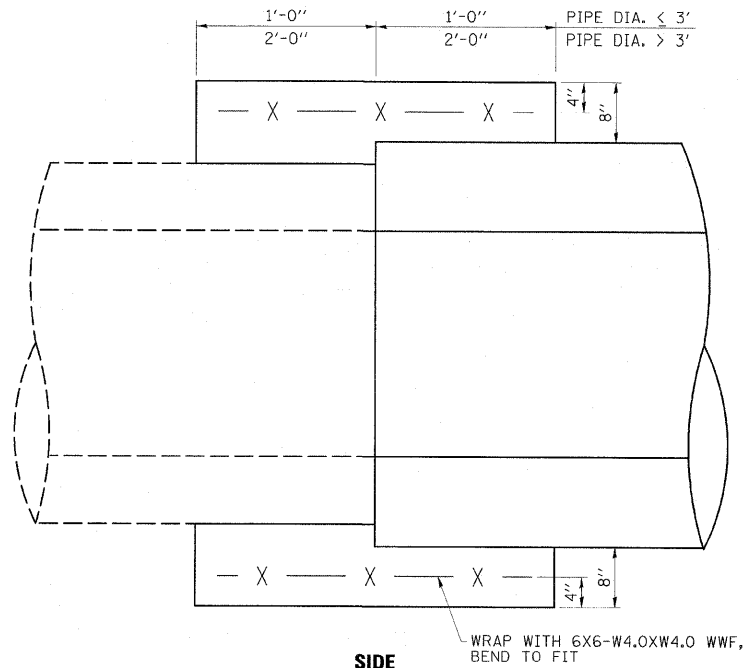




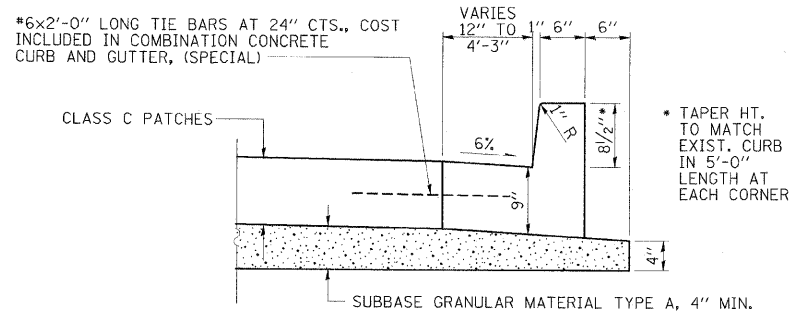
FRONT

**NOTES**

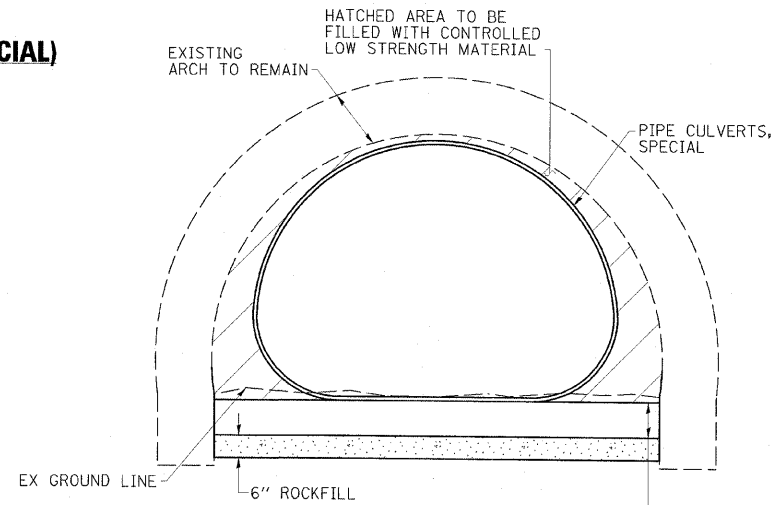
CONCRETE COLLARS SHALL BE CONSTRUCTED OF CLASS SI CONCRETE IN ACCORDANCE WITH SECTION 503 OF THE STANDARD SPECIFICATIONS. WELDED WIRE REINFORCEMENT SHALL CONFORM TO SECTION 1006.10 OF THE STANDARD SPECIFICATIONS. THE CONCRETE WILL BE PAID FOR AT THE CONTRACT UNIT PRICE PER CUBIC YARD FOR CONCRETE COLLAR. WELDED WIRE REINFORCEMENT WILL NOT BE PAID FOR SEPARATELY, BUT SHALL BE CONSIDERED INCLUDED IN THE COST OF CONCRETE COLLAR.



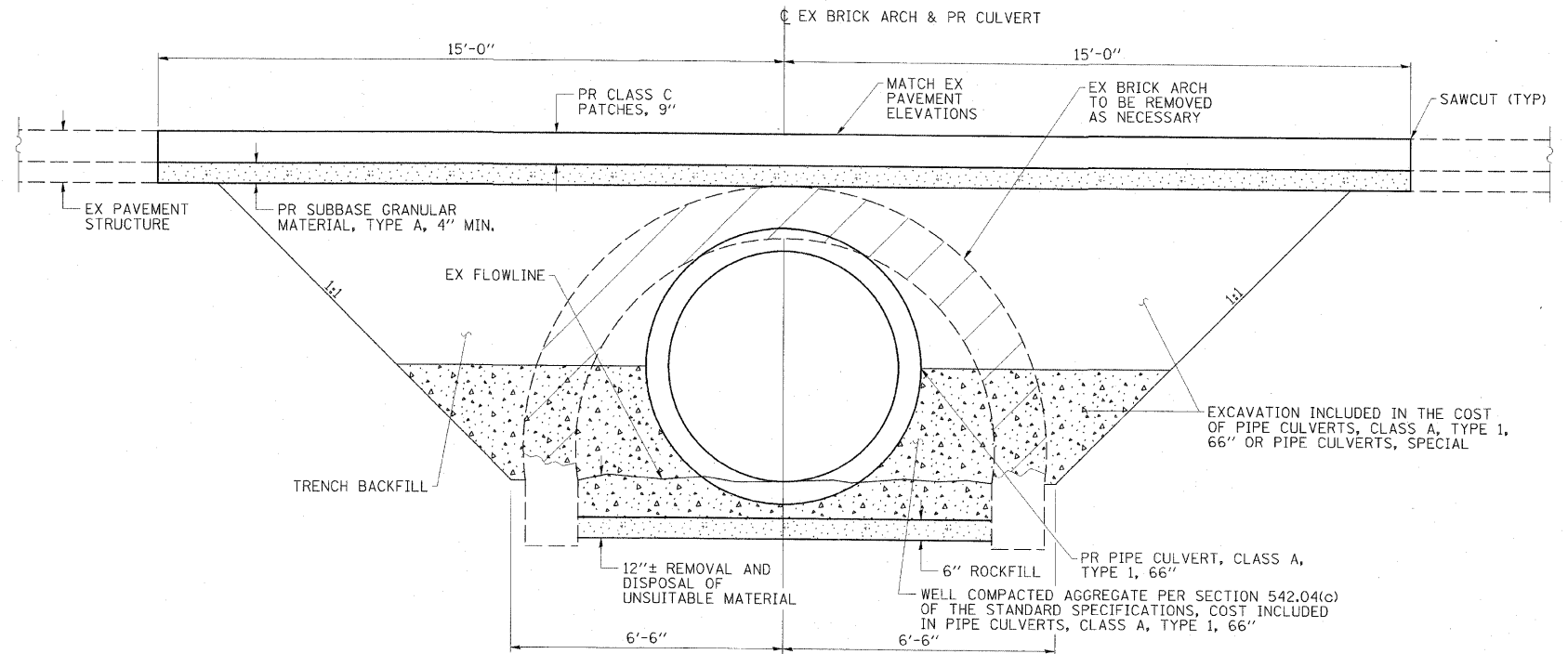
**TYPICAL CONCRETE COLLAR DETAILS**



**COMBINATION CONCRETE CURB AND GUTTER (SPECIAL)**



**SECTION THRU PIPE CULVERTS, SPECIAL INSIDE EXISTING ARCH**

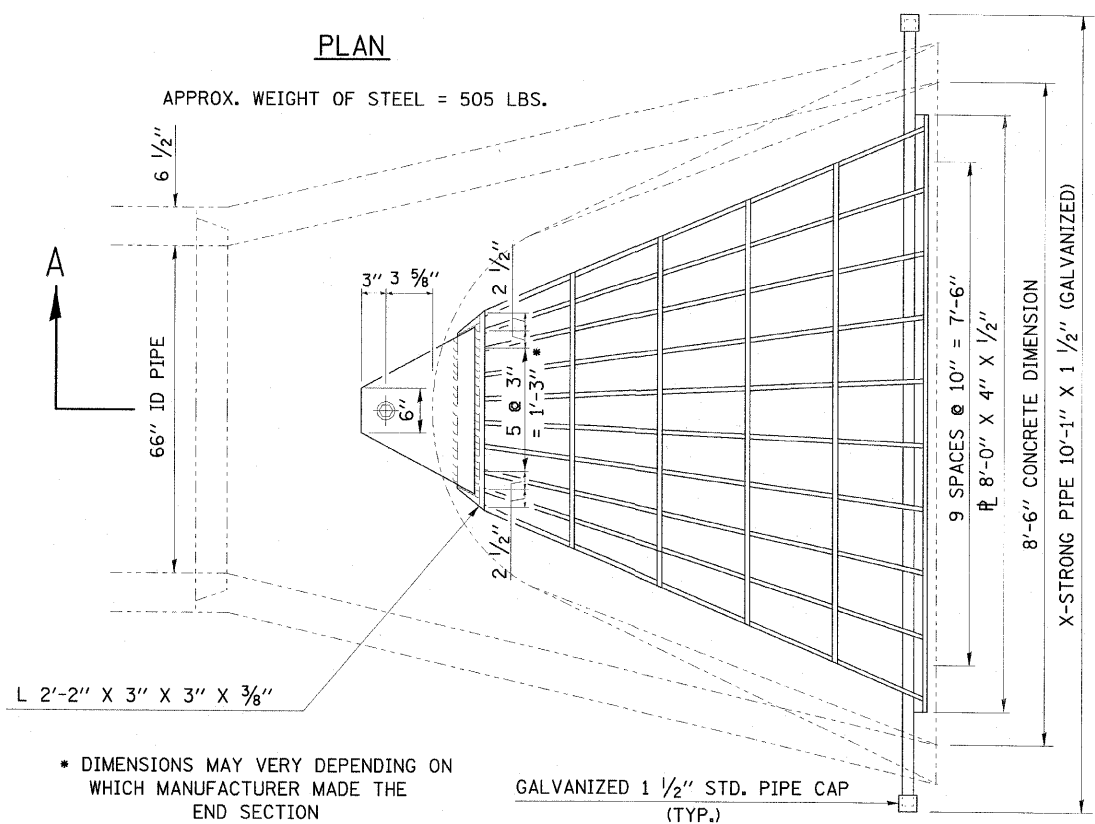
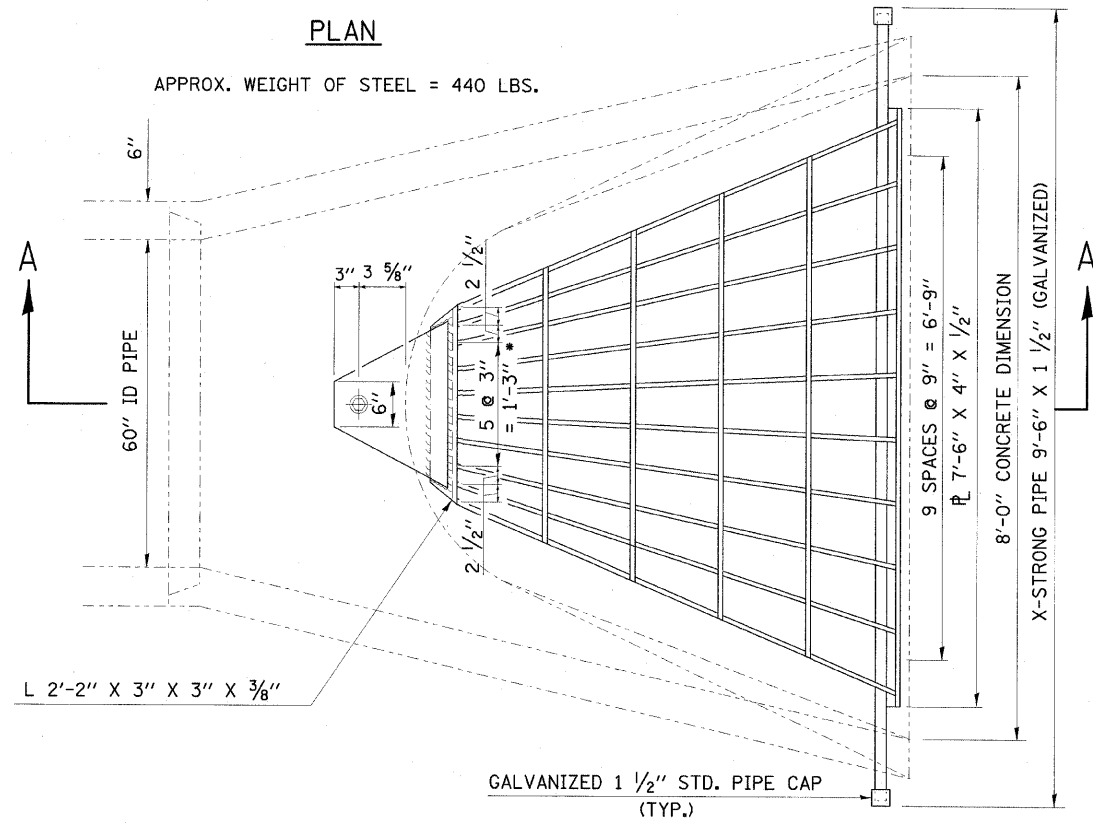


**SECTION THRU CONCRETE PIPE NEAR ROADWAY (AT RIGHT ANGLES TO CULVERT)**

USER: HNS, 08/09/2009  
 TIME: 11:12:41 AM  
 FILE: 71934\_S09\_LVL.dgn  
 PLOT: 08/09/2009 7:11

DESIGNED BY:	ELH	07/23/09	SCALE:	NO SCALE	NO.	DATE	REVISION	APVD
DRAWN BY:	HAS	07/23/09	DATE:	08/09/2009				
CHECKED BY:	ELH	07/23/09	JOB NO.	719.34				
APPROVED BY:	RDP	07/23/09						

# GRATING FOR CONCRETE FLARED END SECTION (FOR 60", 66", & 72" PIPE)



**GENERAL NOTES**

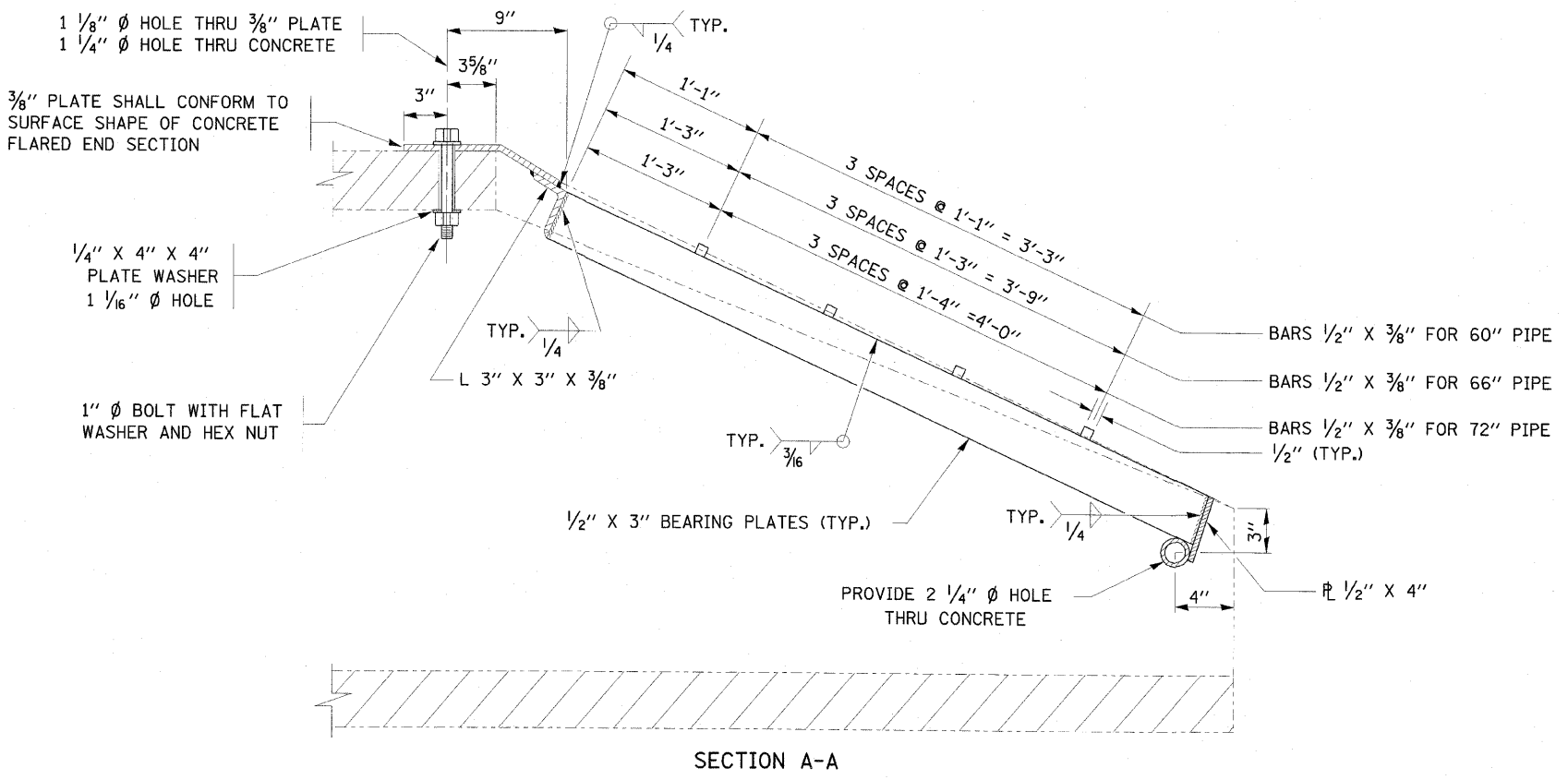
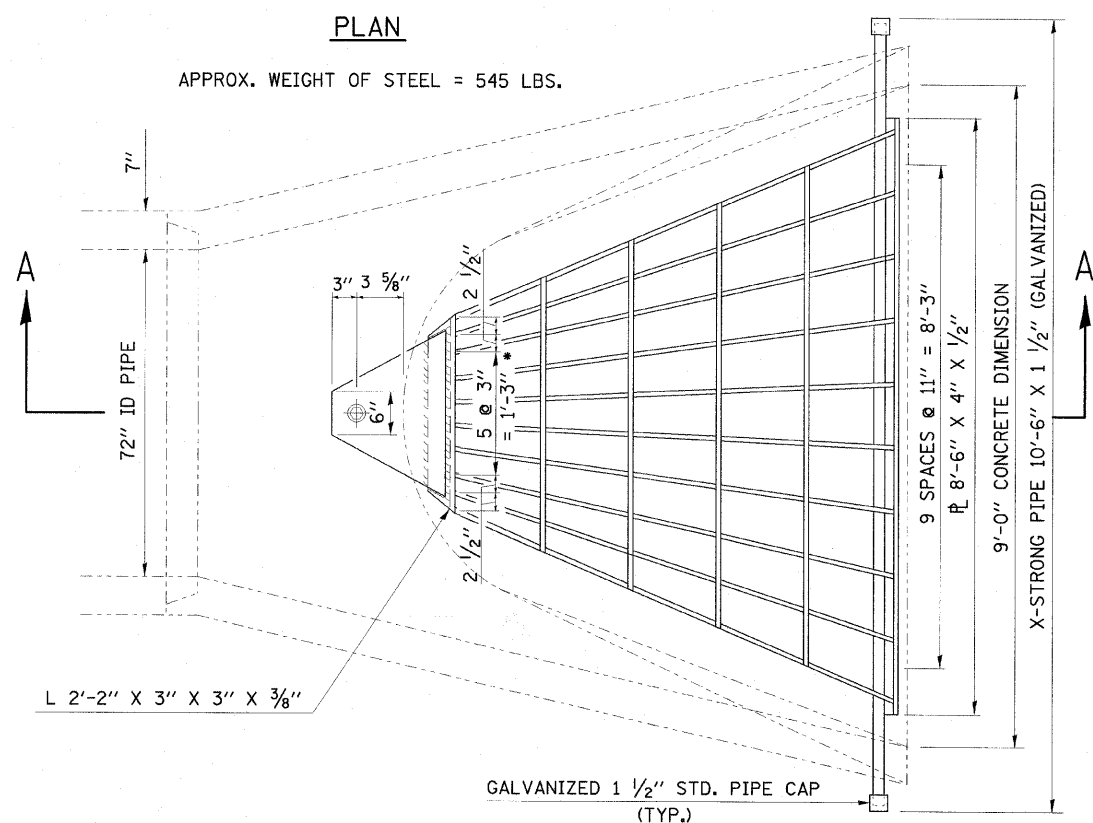
GRATING DETAILS SHOWN ARE INTENDED FOR USE WITH PARTICULAR SIZES OF PRECAST REINFORCED CONCRETE FLARED END SECTIONS AS SHOWN ON STANDARD 542301.

THE GRATING SHALL BE DONE IN ACCORDANCE WITH ARTICLE 542.07(b)(2) OF THE STANDARD SPECIFICATIONS FOR ROAD AND BRIDGE CONSTRUCTION.

THE CORED HOLES IN THE PRECAST CONCRETE FLARED END SECTIONS SHALL BE TO THE DIAMETERS NOTED. IF CONE-OUT ON THE OTHER END OF THE HOLE OCCURS, THE HOLE SHALL BE FILLED WITH GROUT TO CORRECT DIAMETER OF THE HOLE.

APPROXIMATE WEIGHT OF STEEL SHOWN INCLUDES TOTAL WEIGHT OF GRATING, BOLTS, WASHERS, NUTS AND STEEL PIPE.

THE CONTRACT UNIT PRICE " EACH " FOR GRATING FOR CONCRETE FLARED END SECTIONS OF THE SIZE INDICATED SHALL INCLUDE FABRICATION AND INSTALLATION OF THE GRATING AS DETAILED HEREON, INCLUDING FABRICATION OF THE NECESSARY MOUNTING HOLES IN THE FLARED END SECTION. THIS PRICE DOES NOT INCLUDE THE COST OF THE PRECAST CONCRETE FLARED END SECTION.



## GRATING FOR CONCRETE FLARED END SECTION (FOR 60", 66", & 72" PIPE)

USER: hms\_0909  
TIME: 14:02:09  
FILE: 71934\_516.dwg  
SCALE: 0.0004 / IN

**ESCA**  
CONSULTANTS, INC.

DESIGNED BY: ELH	07/02/09	SCALE: NO SCALE	NO.	DATE	REVISION	APVD
DRAWN BY: HAS	07/02/09	DATE: 07/23/2009				
CHECKED BY: ELH	07/02/09	JOB NO. 719.34				
APPROVED BY: RDP	07/02/09					

BUCHANAN STREET STRUCTURE  
CITY OF MONTICELLO

GRATING FOR CONCRETE  
FLARED END SECTION

DRAWING NUMBER  
**10**  
10 OF 10