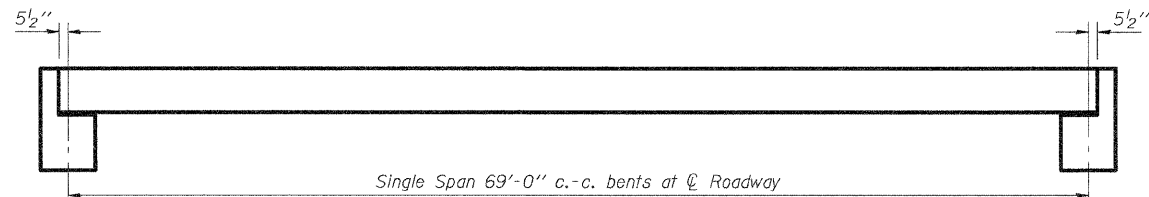
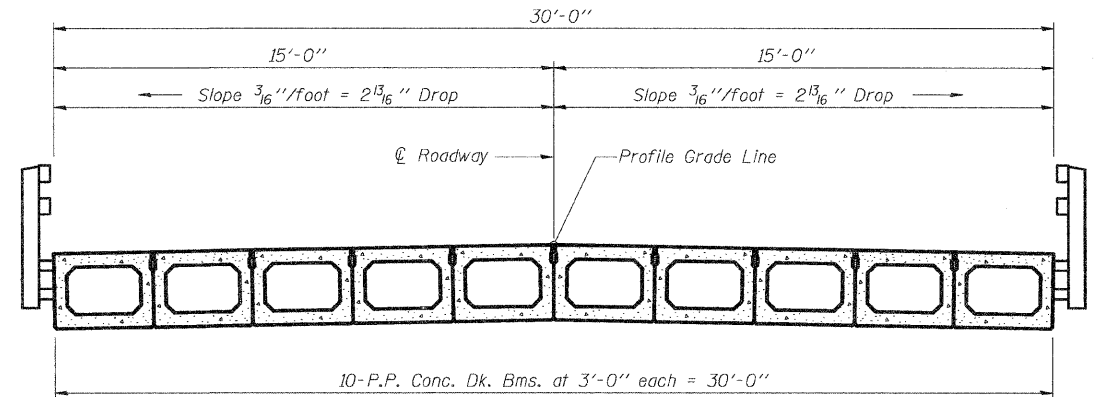


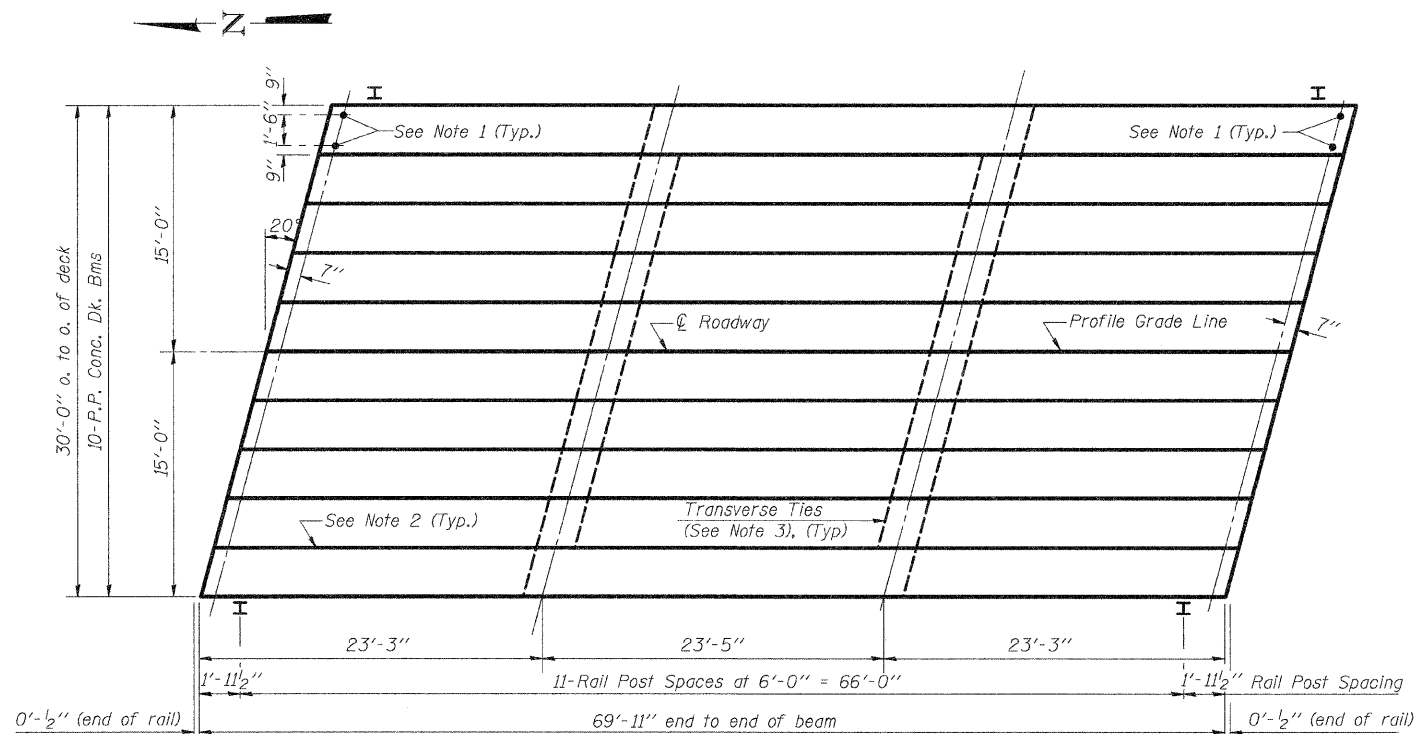
STATE OF ILLINOIS  
DEPARTMENT OF TRANSPORTATION



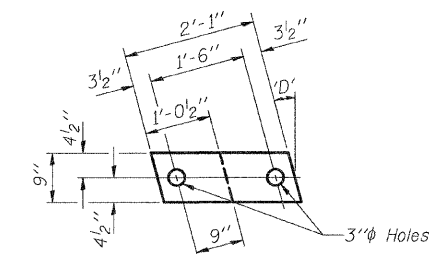
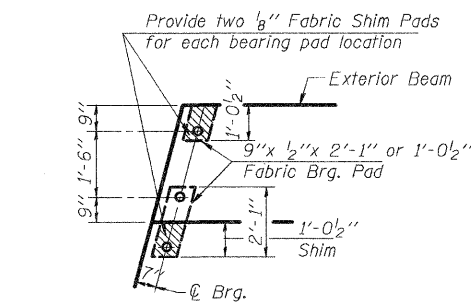
TYPICAL ELEVATIONS



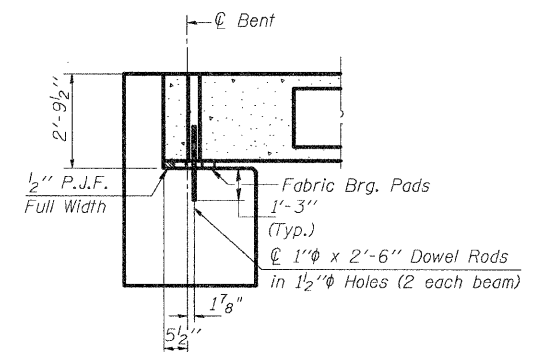
CROSS SECTION



PLAN



1/2" FABRIC BRG. PAD DETAILS



SECTION AT ABUTS.  
(Along  $\text{\textcircled{C}}$  Beams)

NOTES

- After beams have been erected, holes shall be drilled into substructure and anchor dowels placed. Dowel holes shall be filled with non-shrink grout to top of beam and allowed to cure min. 24 hrs. prior to grouting the shear keys.
- Longitudinal keys shall be grouted.
- The 1"  $\phi$  rods in the transverse tie assembly shall be tightened to a snug fit and the threads set. Pockets that receive transverse tie bar outside shall be filled with grout after transverse tie assembly is in place.

DESIGNED	JLG
CHECKED	JSP
DRAWN	UJ
CHECKED	CJC

**HR**  
HURST-ROSCHÉ  
ENGINEERS, INC.  
PROFESSIONAL DESIGN NUMBER: 184-000298

P.P.C. DECK BEAM SUPERSTRUCTURE  
STRUCTURE NO. 068-3359

SHEET NO. 2 9 SHEETS	F.A.S. RTE.	SECTION	COUNTY	TOTAL SHEETS	SHEET NO.
	723	08-00129-00-BR	MONTGOMERY	18	6
			CONTRACT NO. 93498		
FED. ROAD DIST. NO. 6 ILLINOIS FED. AID PROJECT					

Revised: 9/15/2008 3:07:12 PM