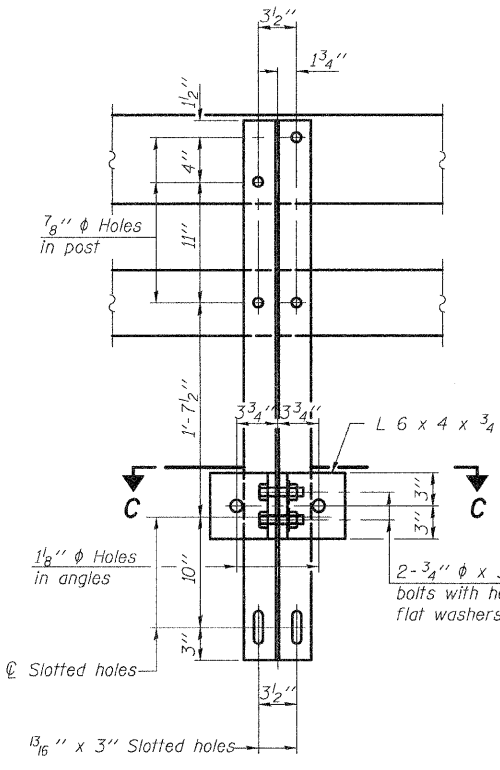
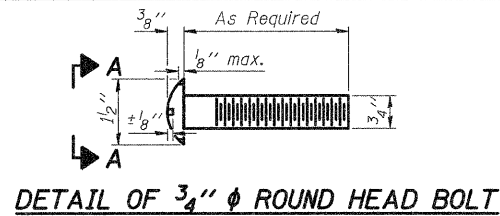
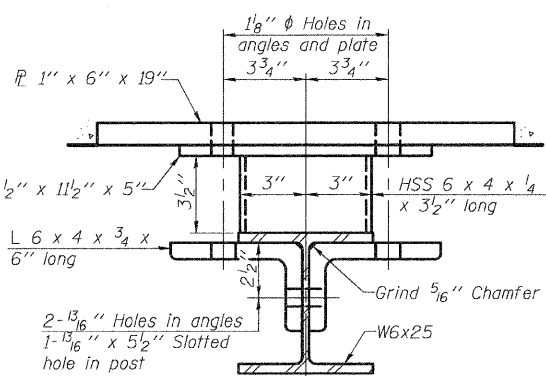


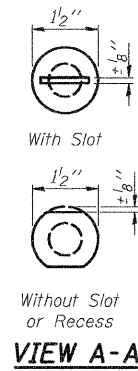
STATE OF ILLINOIS
DEPARTMENT OF TRANSPORTATION



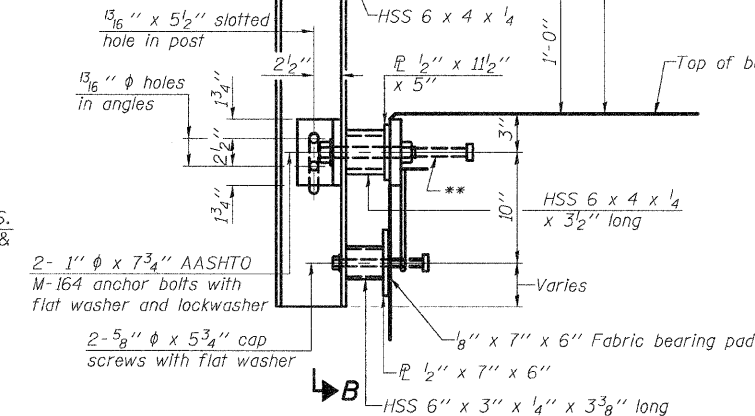
SECTION B-B



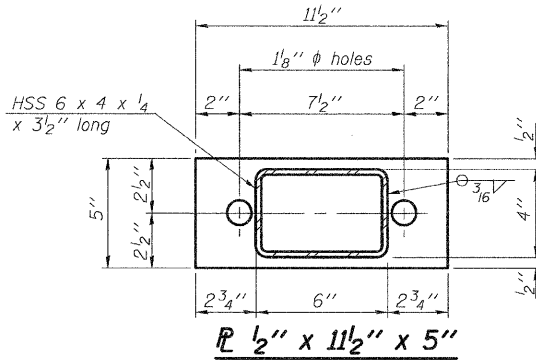
SECTION C-C



4-3/4" ϕ x 6" Round Head Bolts (With slot or approved recess in head) with locknut & flat washer. 7/8" ϕ holes in hollow structural section may be drilled in the field.

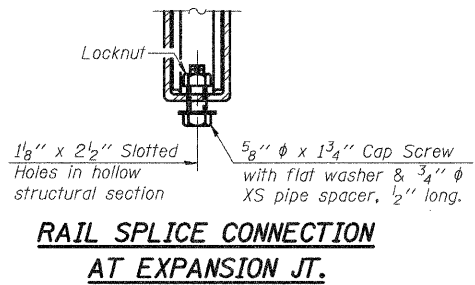


SECTION AT RAIL POST

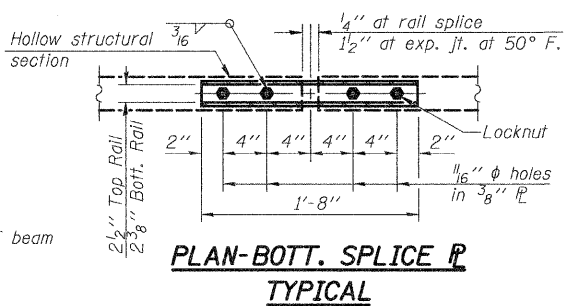


ANCHOR DEVICE

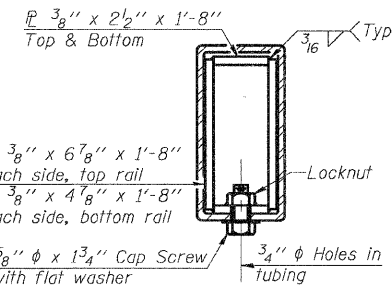
*Threaded areas shall be plugged or blocked off during casting of beam. Galvanized after fabrication.



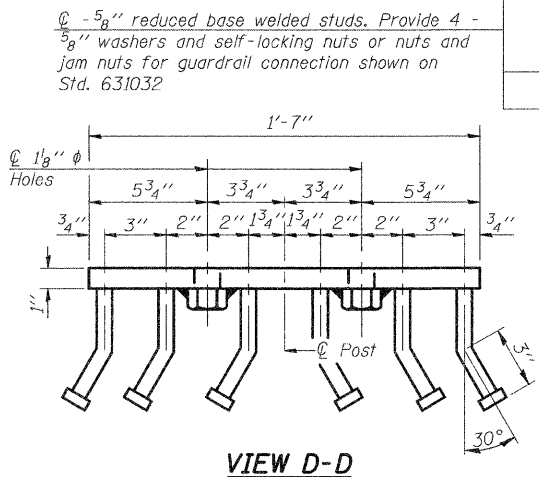
RAIL SPLICE CONNECTION AT EXPANSION JT.



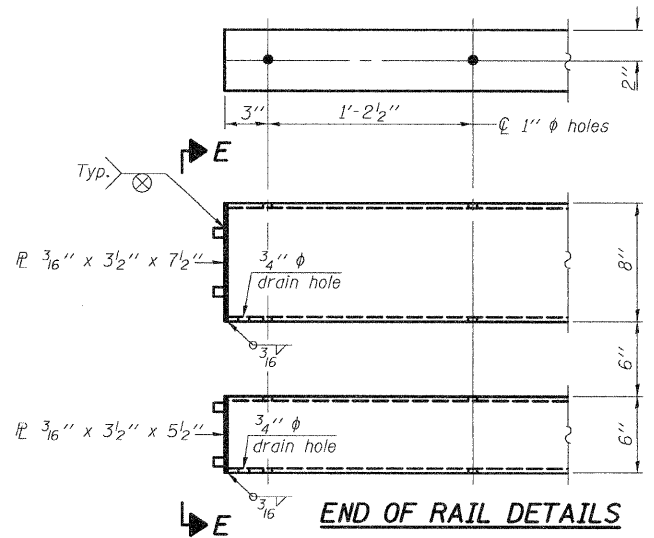
PLAN-BOTT. SPLICE P TYPICAL



SECTION AT RAIL SPLICE



VIEW D-D



END OF RAIL DETAILS

Notes:
All field drilled holes shall be coated with an approved zinc rich paint before erection.
For multi-span bridges, sufficient 1/4" x 6" x 1'-2" galvanized steel shims shall be provided to align rail between adjacent spans. Cost included with Steel Railing, Type SM.
Steel rail elements shall be galvanized according to Article 509.05 of the Standard Specifications.
** The studs of the anchor devices shall be placed below the top reinforcement bars and the outermost longitudinal reinforcement bar shall be placed directly above the studs of the rail post anchor device.

BILL OF MATERIAL

Item	Unit	Quantity
Steel Railing, Type SM	Foot	140

STEEL RAILING, TYPE SM
STRUCTURE NO. 068-3359

DESIGNED	JLG
CHECKED	JSP
DRAWN	UJ
CHECKED	CJC



SHEET NO. 6	F.A.S RTE. 723	SECTION 08-00129-00-BR	COUNTY MONTGOMERY	TOTAL SHEETS 18	SHEET NO. 10
9 SHEETS					
CONTRACT NO. 93498					
FED. ROAD DIST. NO. 6 ILLINOIS FED. AID PROJECT					