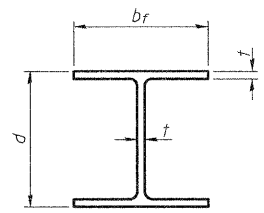
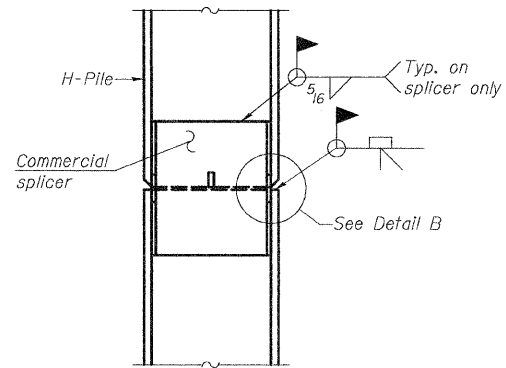


STATE OF ILLINOIS
DEPARTMENT OF TRANSPORTATION

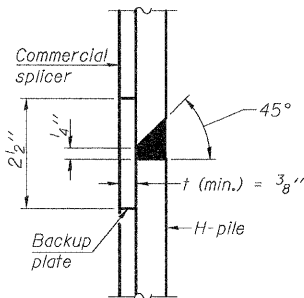


STEEL PILE TABLE

Designation	Depth <i>d</i>	Flange width <i>b_f</i>	Web and Flange thickness <i>t</i>	Encasement diameter <i>A</i>
HP 10x42	9 ³ / ₄ "	10 ⁵ / ₈ "	⁷ / ₁₆ "	24"

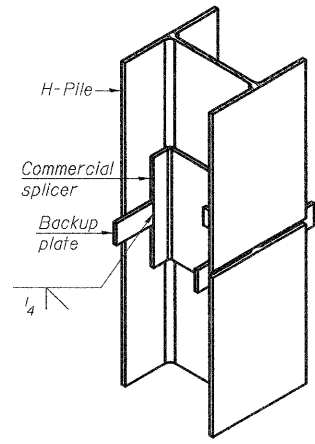


ELEVATION

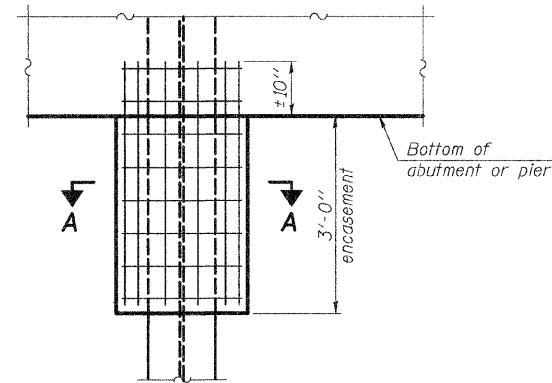


DETAIL "B"

WELDED COMMERCIAL SPLICE

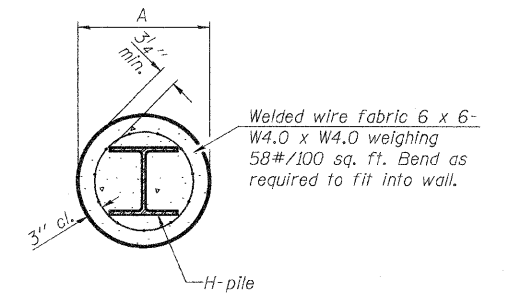


ISOMETRIC VIEW



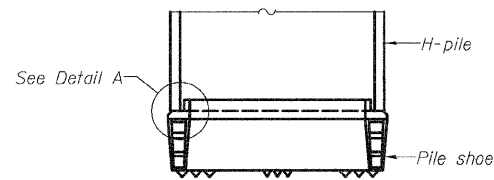
ELEVATION

PILE ENCASEMENT

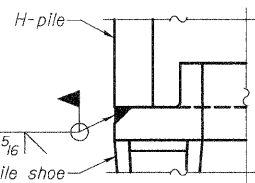


SECTION A-A

Note:
Forms for encasement may be omitted when soil conditions permit.

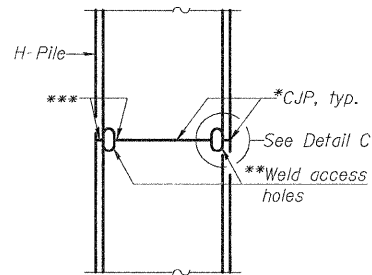


ELEVATION

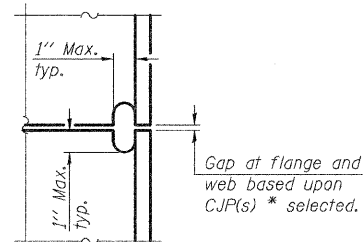


DETAIL A

H-PILE SHOE ATTACHMENT

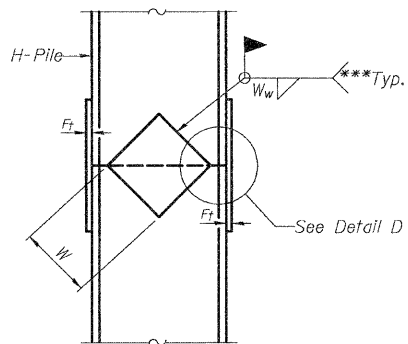


ELEVATION

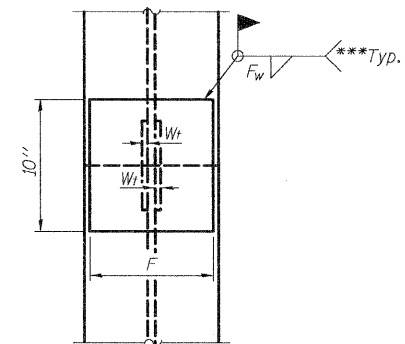


DETAIL C

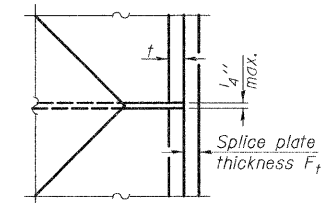
COMPLETE PENETRATION WELD SPLICE



ELEVATION



END VIEW



DETAIL D

WELDED PLATE FIELD SPLICE

Designation	F	F _t	F _w	W	W _t	W _w
HP 10x42	8"	5 ⁵ / ₈ "	9 ⁵ / ₁₆ "	5 ¹ / ₄ "	1 ¹ / ₂ "	3 ³ / ₈ "

DESIGNED	JLG
CHECKED	JSP
DRAWN	UJ
CHECKED	CJC

HR
HURST-ROSCHÉ
ENGINEERS, INC.
PROFESSIONAL DESIGN NUMBER: 144-000296

* Use joint conforming to Figure 3.4 in AWS D1.1, Structure Welding Code - Steel.
** Preparation per Fig. 5.2 in AWS D1.1, Structure Welding Code - Steel.
*** Interrupt welds 1/4" from end of each pile.

Note:
The steel H-piles shall be according to AASHTO M270 Grade 50.

SHEET NO. 7 9 SHEETS	F.A.S RTE.	SECTION	COUNTY	TOTAL SHEETS	SHEET NO.
	723	08-00129-00-BR	MONTGOMERY	18	11
CONTRACT NO. 93498					
FED. ROAD DIST. NO. 6 ILLINOIS FED. AID PROJECT					