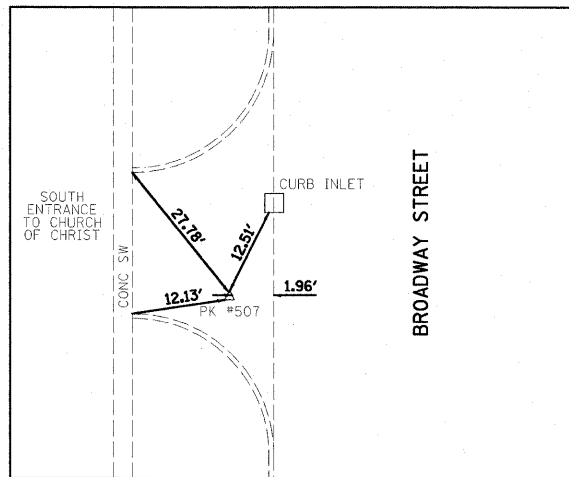
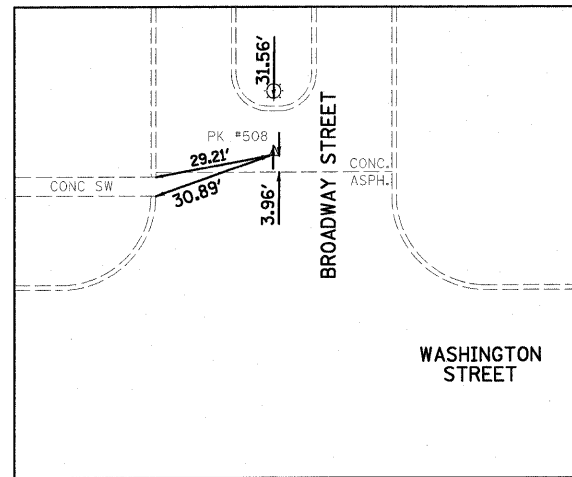


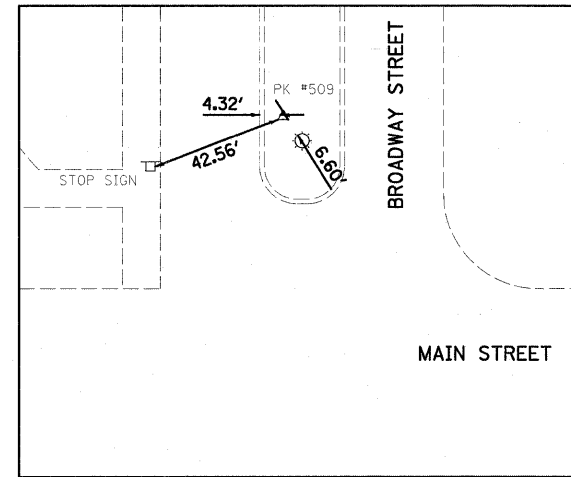
PK #505 / N 1321045.425 / E 2326106.763
 STA. 10+19.22 / 13.48' RT
 PK #506 / N 1321062.931 / E 2326105.044
 STA. 10+36.71 / 11.62' RT



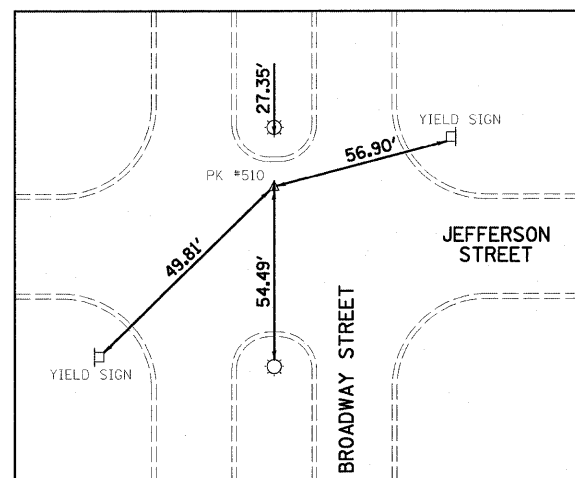
PK #507 / N 1321604.541 / E 2326080.227
 STA. 15+78.10 / 17.61' LT



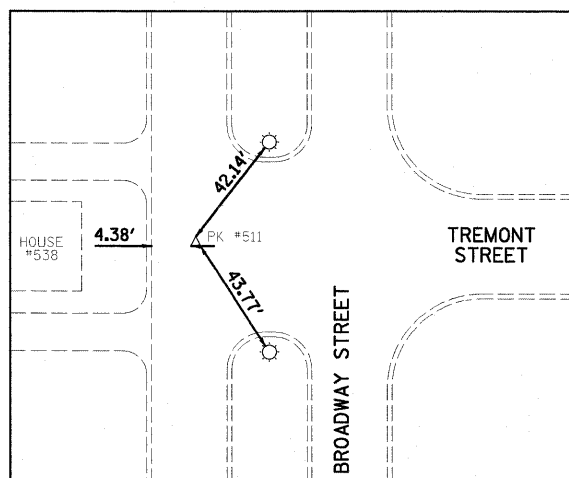
PK #508 / N 1322434.953 / E 2326109.530
 STA. 24+08.67 / 0.91' LT



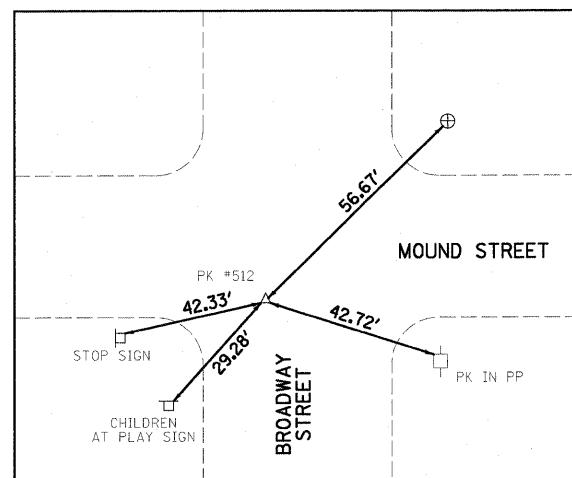
PK #509 / N 1323273.638 / E 2326103.246
 STA. 32+47.36 / 6.28' LT



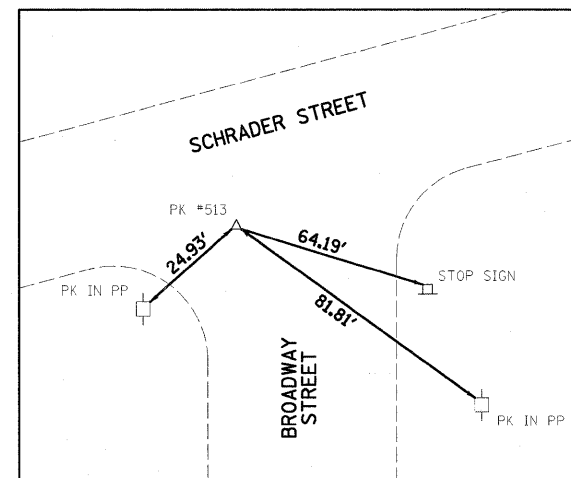
PK #510 / N 1324026.182 / E 2326104.215
 STA. 39+99.92 / 3.55' LT



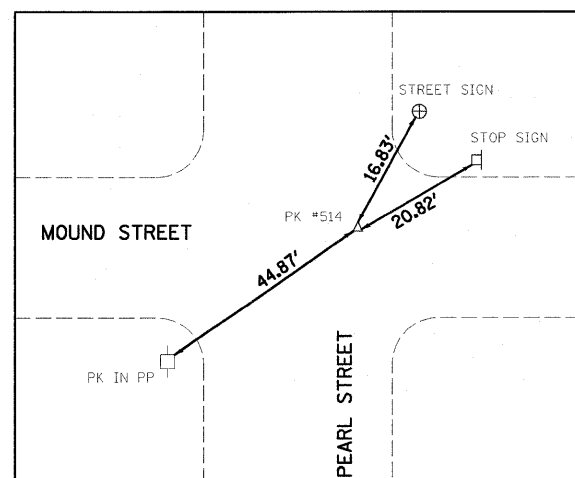
PK #511 / N 1325237.068 / E 2326079.477
 STA. 52+10.86 / 23.96' LT



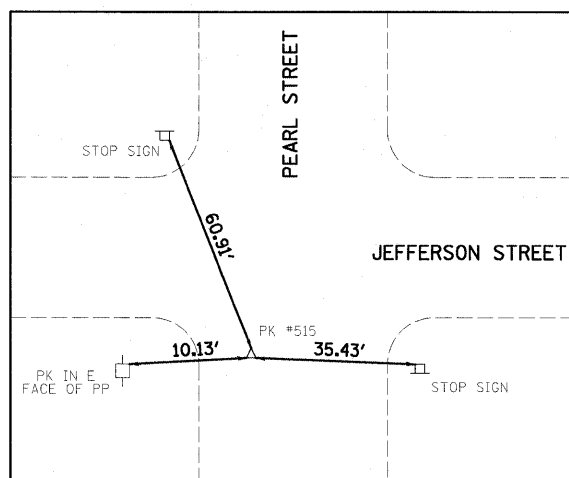
PK #512 / N 1325984.764 / E 2326096.714
 STA. 59+58.47 / 9.15' LT



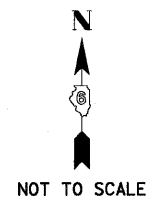
PK #513 / N 1326672.200 / E 2326092.056
 STA. 66+45.88 / 16.13' LT



PK #514 / N 1326023.402 / E 2326529.879
 STA. 59+98.56 / 423.88' RT



PK #515 / N 1323987.615 / E 2326506.772
 STA. 39+59.93 / 398.86' RT



BASELINE COORDINATES		
STATION	NORTHING	EASTING
10+00.00	1,321,026.32	2,326,093.13
23+68.21 (BK)	1,322,394.49	2,326,104.26
23+68.21 (AHD)	1,322,394.50	2,326,110.48
27+63.63	1,322,789.91	2,326,110.09
31+77.61	1,323,203.89	2,326,109.59
35+90.21	1,323,616.49	2,326,109.22
39+85.52	1,324,011.80	2,326,107.83
43+83.75	1,324,410.02	2,326,106.21
47+52.87	1,324,779.14	2,326,104.74
52+11.25	1,325,237.52	2,326,103.44
55+46.49	1,325,572.76	2,326,104.48
67+48.17	1,326,774.43	2,326,108.53

0081364_Control_Ties.dgn
 9/28/2009 10:45:01 AM
 P:\2009\0801\0500 Havana Broadway\cpln

FILE NAME =
 0081364_Control_Ties.dgn

USER NAME =
 PLOT SCALE =
 PLOT DATE = 9/28/2009 10:45:01 AM

DESIGNED - PSA
 DRAWN - JTC/BAB
 CHECKED - ERB/RDY
 DATE - 09/29/09

REVISED -
 REVISED -
 REVISED -
 REVISED -

STATE OF ILLINOIS
DEPARTMENT OF TRANSPORTATION

CITY OF HAVANA - BROADWAY STREET
CONTROL POINT TIES

SCALE: N.T.S. SHEET NO. OF SHEETS STA. 10+37 TO STA. 55+75

F.A. RTE.	SECTION	COUNTY	TOTAL SHEETS	SHEET NO.
	05-00035-00-SS	MASON	60	11
CONTRACT NO. 93502				
FED. ROAD DIST. NO. ILLINOIS FED. AID PROJECT				