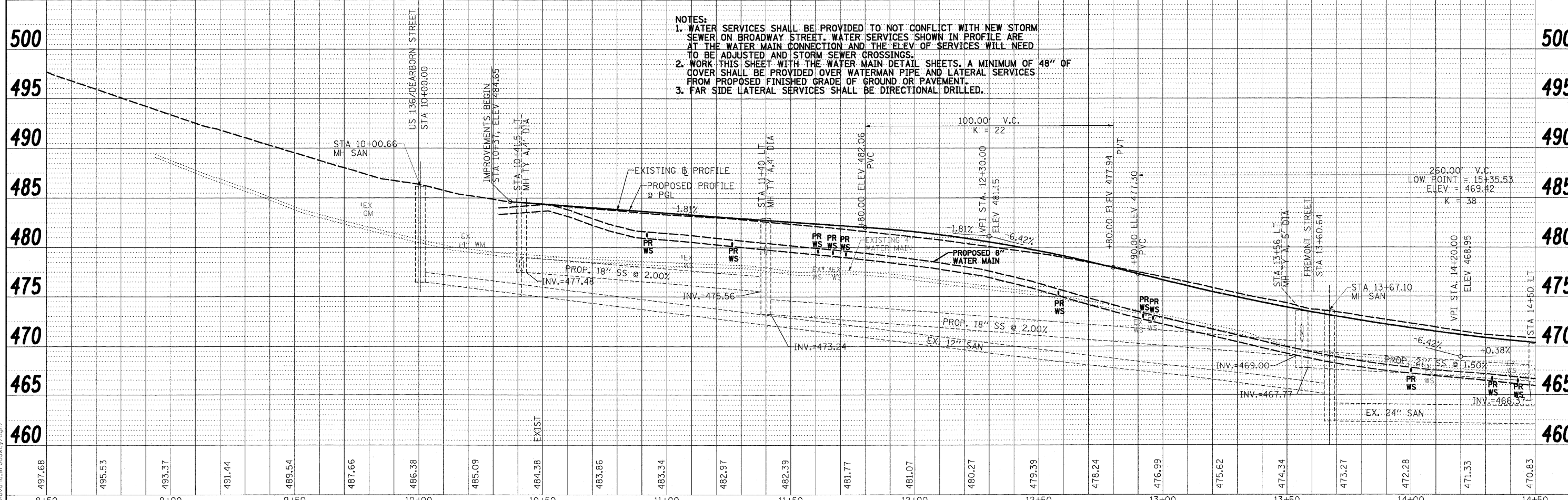
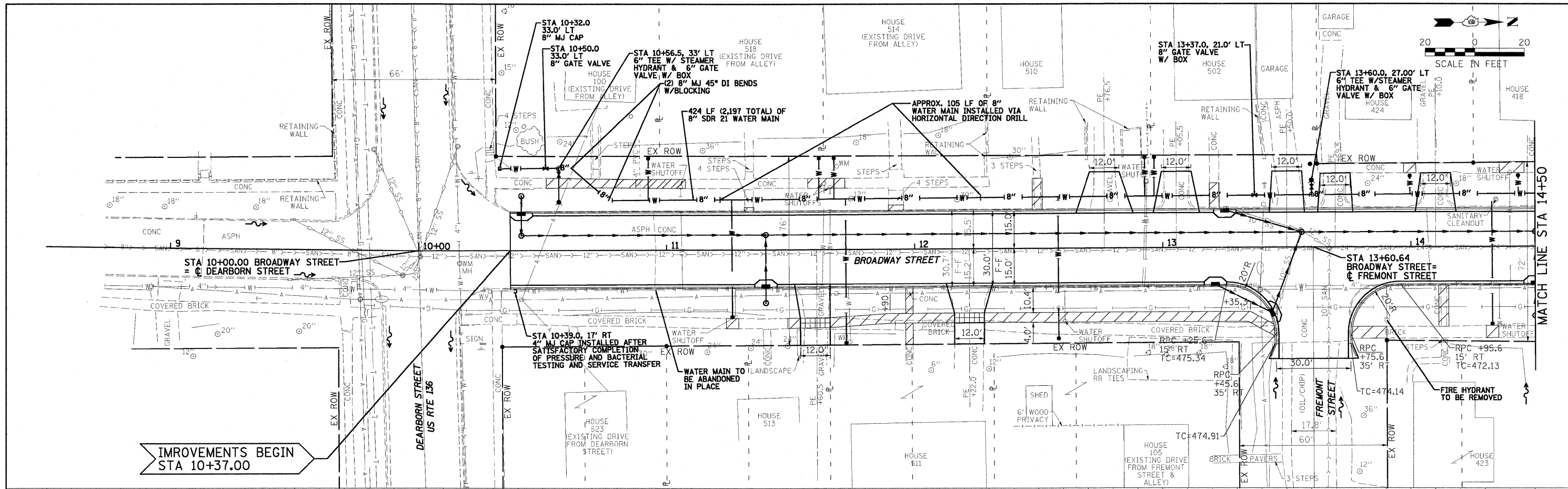


PLAN	SURVEYED	DATE
	PLOTTED	
	ALIGNED	
	CHECKED	
	DATE	
	BY	
	FILE NAME	

PROFILE	SURVEYED	DATE
	PLOTTED	
	GRADES	
	CHECKED	
	DATE	
	BY	
	FILE NAME	



- NOTES:
1. WATER SERVICES SHALL BE PROVIDED TO NOT CONFLICT WITH NEW STORM SEWER ON BROADWAY STREET. WATER SERVICES SHOWN IN PROFILE ARE AT THE WATER MAIN CONNECTION AND THE ELEV. OF SERVICES WILL NEED TO BE ADJUSTED AND STORM SEWER CROSSINGS.
 2. WORK THIS SHEET WITH THE WATER MAIN DETAIL SHEETS. A MINIMUM OF 48" OF COVER SHALL BE PROVIDED OVER WATERMAIN PIPE AND LATERAL SERVICES FROM PROPOSED FINISHED GRADE OF GROUND OR PAVEMENT.
 3. FAR SIDE LATERAL SERVICES SHALL BE DIRECTIONAL DRILLED.

0081364.WATERMAIN.dgn
 9/28/2009 10:45:43 AM
 0081364.WATERMAIN.dgn

FILE NAME = 0081364.WATERMAIN.dgn	USER NAME =	DESIGNED - CSV	REVISED -	STATE OF ILLINOIS DEPARTMENT OF TRANSPORTATION	CITY OF HAVANA - BROADWAY STREET WATER MAIN PLAN & PROFILE	F.A. RTE.	SECTION	COUNTY	TOTAL SHEETS	SHEET NO.	
PLOT SCALE =	CHECKED - RBH	REVISED -	REVISED -			05-00035-00-SS	MASON	60	21	CONTRACT NO. 93502	
PLOT DATE = 9/28/2009 10:45:43 AM	DATE - 09/29/09	REVISED -	REVISED -			SCALE: 1" = 20'		SHEET NO. OF SHEETS		STA. 10+37 TO STA. 14+50	FED. ROAD DIST. NO. (ILLINOIS) FED. AID PROJECT