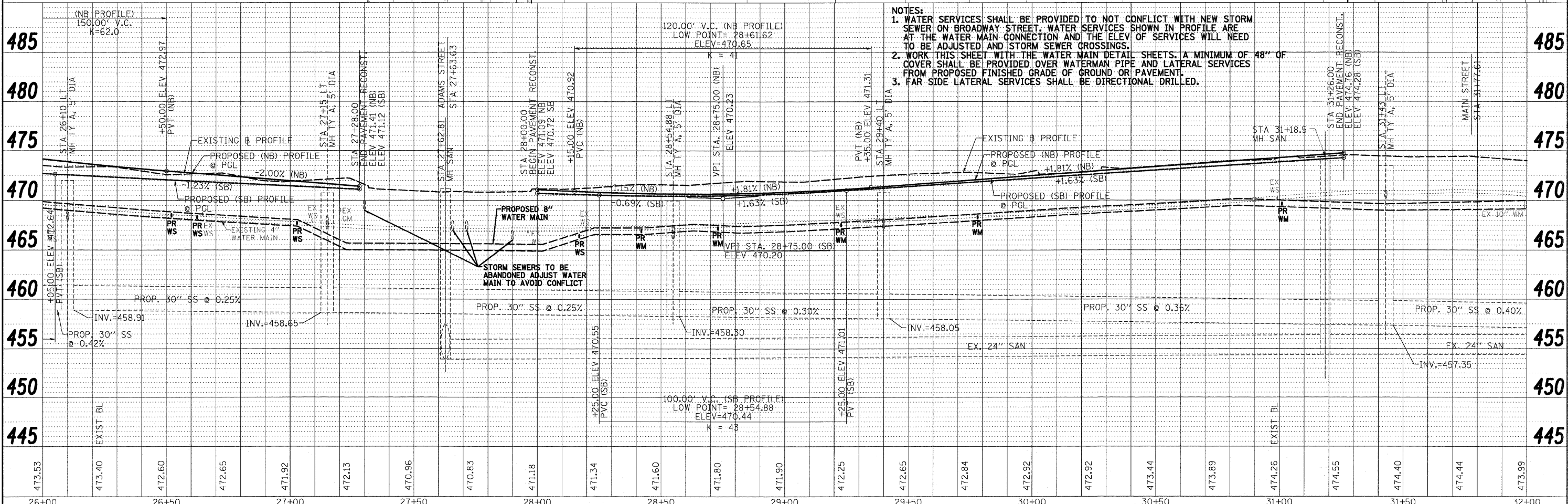
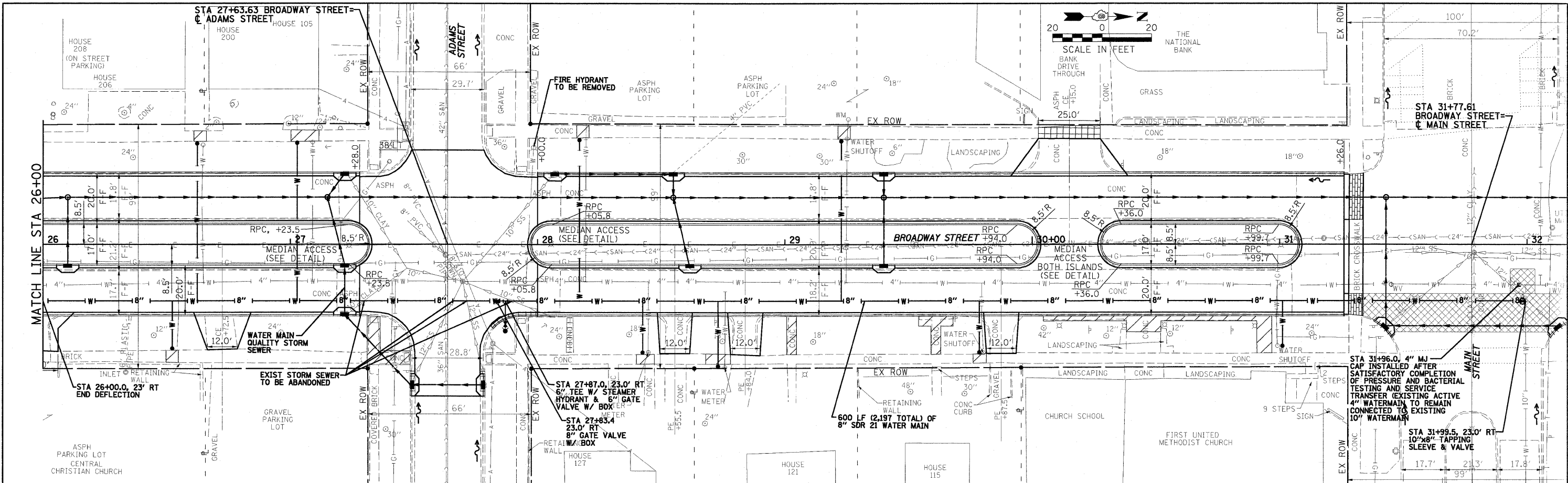


PLAN	DATE
BY	
CHECKED	
DESIGNED	
NOTED	
APPROVED	

PROFILE	DATE
BY	
CHECKED	
DESIGNED	
NOTED	
APPROVED	



- NOTES:**
1. WATER SERVICES SHALL BE PROVIDED TO NOT CONFLICT WITH NEW STORM SEWER ON BROADWAY STREET. WATER SERVICES SHOWN IN PROFILE ARE AT THE WATER MAIN CONNECTION AND THE ELEV. OF SERVICES WILL NEED TO BE ADJUSTED AND STORM SEWER CROSSINGS.
 2. WORK THIS SHEET WITH THE WATER MAIN DETAIL SHEETS. A MINIMUM OF 48" OF COVER SHALL BE PROVIDED OVER WATERMAIN PIPE AND LATERAL SERVICES FROM PROPOSED FINISHED GRADE OF GROUND OR PAVEMENT.
 3. FAR-SIDE LATERAL SERVICES SHALL BE DIRECTIONAL DRILLED.

0091364.WATERMAIN.dgn 10:50:54 AM
 9/28/2009 10:50:54 AM
 P:\2008\081364-Havana\BROADWAY.dgn

FILE NAME = 0091364.WATERMAIN.dgn	USER NAME =	DESIGNED - CSV	REVISED -	STATE OF ILLINOIS DEPARTMENT OF TRANSPORTATION	CITY OF HAVANA - BROADWAY STREET WATER MAIN PLAN & PROFILE	F.A. RTE.	SECTION	COUNTY	TOTAL SHEETS	SHEET NO.
PLOT SCALE =	CHECKED - RBH	REVISED -	REVISED -			05-00035-00-SS	MASON	60	24	
PLOT DATE = 9/28/2009 10:50:54 AM	DATE - 09/29/09	REVISED -	REVISED -			CONTRACT NO. 93502				
						SCALE: 1" = 20'	SHEET NO. OF SHEETS	STA. 26+00 TO STA. 31+99.50	FED. ROAD DIST. NO.	ILLINOIS FED. AID PROJECT