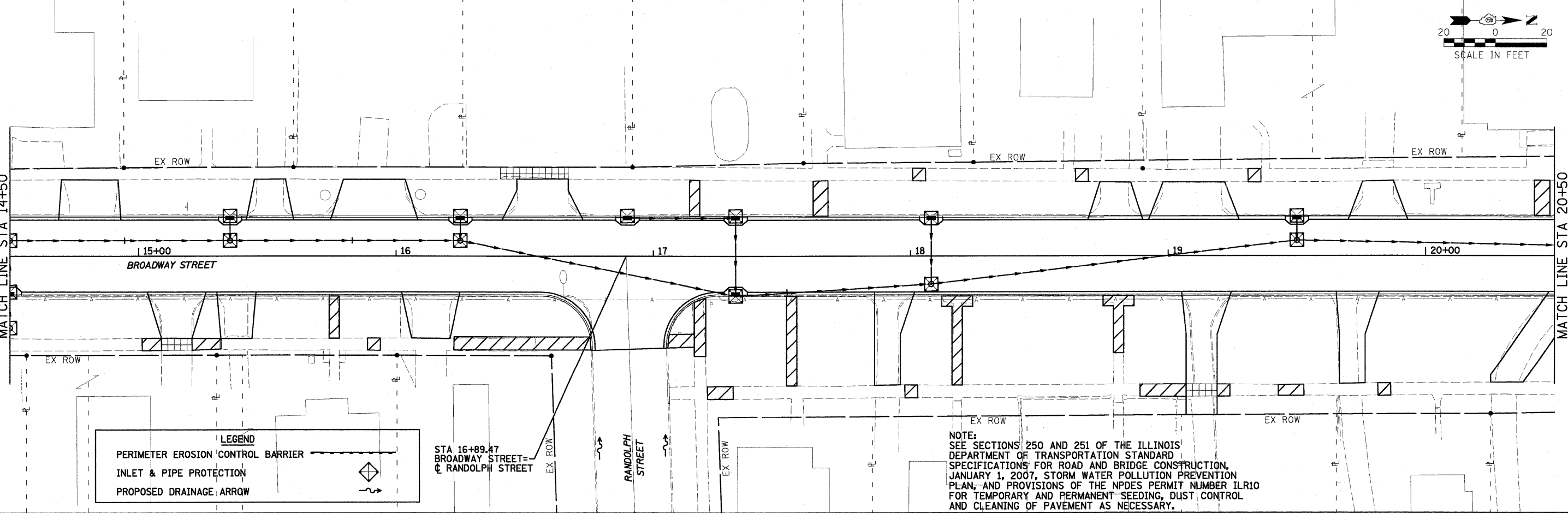


IMPROVEMENTS BEGIN
STA 10+37.00

LEGEND

| | |
|-----------------------------------|--|
| PERIMETER EROSION CONTROL BARRIER | |
| INLET & PIPE PROTECTION | |
| PROPOSED DRAINAGE ARROW | |

NOTE:
SEE SECTIONS 250 AND 251 OF THE ILLINOIS DEPARTMENT OF TRANSPORTATION STANDARD SPECIFICATIONS FOR ROAD AND BRIDGE CONSTRUCTION, JANUARY 1, 2007, STORM WATER POLLUTION PREVENTION PLAN, AND PROVISIONS OF THE NPDES PERMIT NUMBER ILR10 FOR TEMPORARY AND PERMANENT SEEDING, DUST CONTROL AND CLEANING OF PAVEMENT AS NECESSARY.



LEGEND

| | |
|-----------------------------------|--|
| PERIMETER EROSION CONTROL BARRIER | |
| INLET & PIPE PROTECTION | |
| PROPOSED DRAINAGE ARROW | |

STA 16+89.47
BROADWAY STREET=
R RANDOLPH STREET

NOTE:
SEE SECTIONS 250 AND 251 OF THE ILLINOIS DEPARTMENT OF TRANSPORTATION STANDARD SPECIFICATIONS FOR ROAD AND BRIDGE CONSTRUCTION, JANUARY 1, 2007, STORM WATER POLLUTION PREVENTION PLAN, AND PROVISIONS OF THE NPDES PERMIT NUMBER ILR10 FOR TEMPORARY AND PERMANENT SEEDING, DUST CONTROL AND CLEANING OF PAVEMENT AS NECESSARY.

0081364.EROSION1.dgn 10:46:00 AM 9/28/2009 08:36:41 b:\projects\roadway\dmr\

| | | | |
|----------------------------------|-------------|-------------------|-----------|
| FILE NAME = 0081364.EROSION1.dgn | USER NAME = | DESIGNED - PSA | REVISED - |
| | | DRAWN - JTC | REVISED - |
| | | CHECKED - ERB/RDY | REVISED - |
| | | DATE - 09/29/09 | REVISED - |
| | | | |

**STATE OF ILLINOIS
DEPARTMENT OF TRANSPORTATION**

**CITY OF HAVANA - BROADWAY STREET
EROSION CONTROL PLAN "SWPPP"**

SCALE: 1" = 20' SHEET NO. OF SHEETS STA. 10+37 TO STA. 20+50

| | | | | |
|---|----------------|--------|--------------|-----------|
| F.A. RTE. | SECTION | COUNTY | TOTAL SHEETS | SHEET NO. |
| | 05-00035-00-SS | MASON | 60 | 25 |
| CONTRACT NO. 93502 | | | | |
| FED. ROAD DIST. NO. [ILLINOIS] FED. AID PROJECT | | | | |