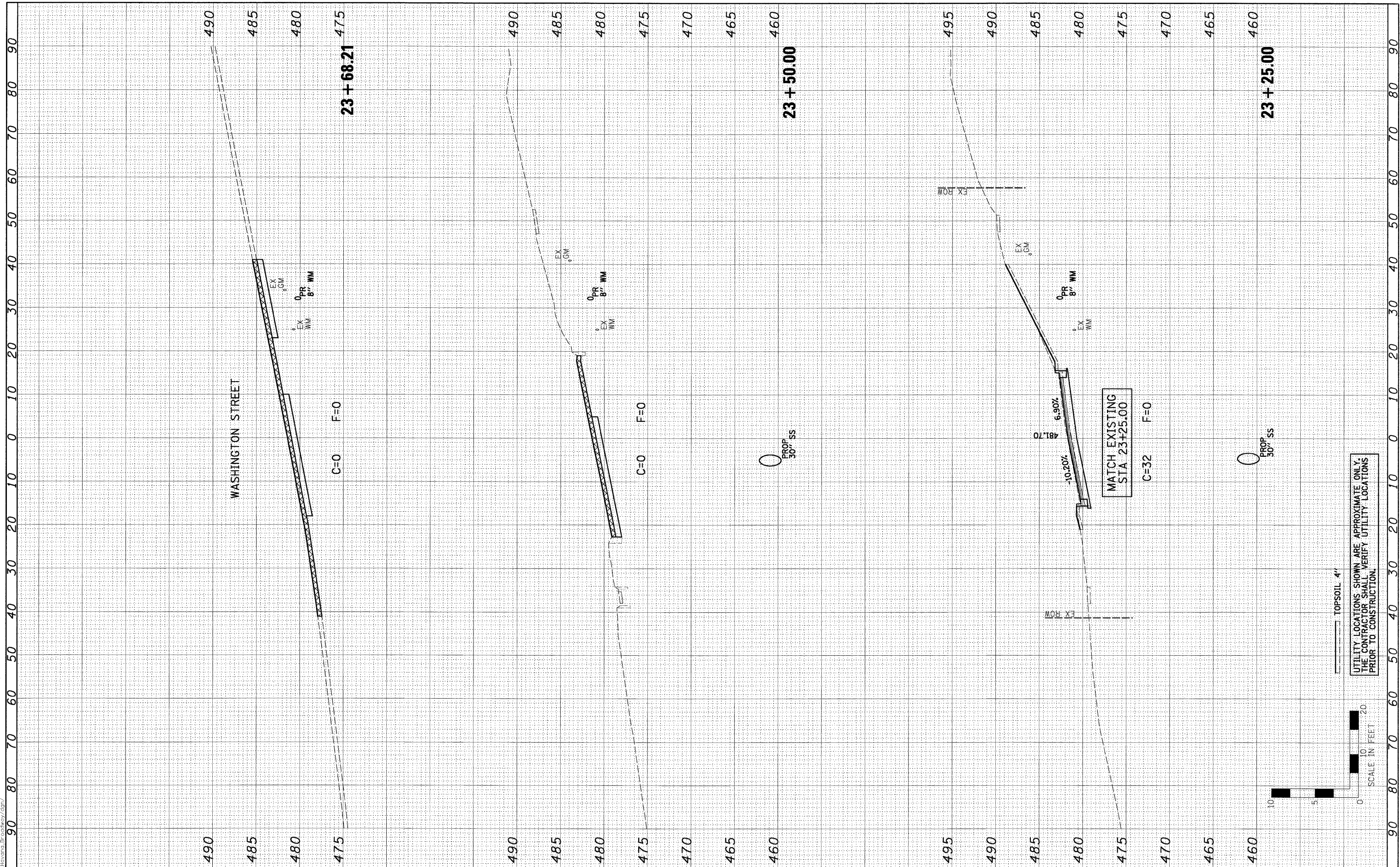


FINL	SURVEYED	BY	DATE
NO.	NO.		
NO.	NO.		
NO.	NO.		

ORIGINAL	SURVEYED	BY	DATE
NO.	NO.		
NO.	NO.		
NO.	NO.		

0081364_XSECT-STH.dgn 10/46:33 AM
 9/28/2009 10:46:33 AM
 0081364_XSECT-STH.dgn



FILE NAME = 0081364_XSECT-STH.dgn
 USER NAME =
 PLOT SCALE =
 PLOT DATE = 9/28/2009 10:46:33 AM

DESIGNED - PSA
 DRAWN - JTC
 CHECKED - ERB/RDY
 DATE - 09/29/09

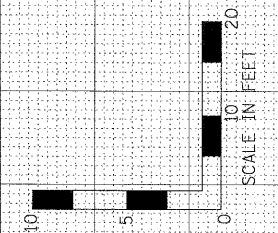
REVISED -
 REVISED -
 REVISED -
 REVISED -

**STATE OF ILLINOIS
 DEPARTMENT OF TRANSPORTATION**

**CITY OF HAVANA - BROADWAY STREET
 CROSS SECTIONS**

SCALE: H=10, V=5 SHEET NO. OF SHEETS STA. 23+25.00 TO STA. 23+68.21

F.A. RTE.	SECTION	COUNTY	TOTAL SHEETS	SHEET NO.
	05-00035-00-SS	MASON	60	51
CONTRACT NO. 93502				
FED. ROAD DIST. NO. [ILLINOIS] FED. AID PROJECT				



UTILITY LOCATIONS SHOWN ARE APPROXIMATE ONLY.
 THE CONTRACTOR SHALL VERIFY UTILITY LOCATIONS
 PRIOR TO CONSTRUCTION.