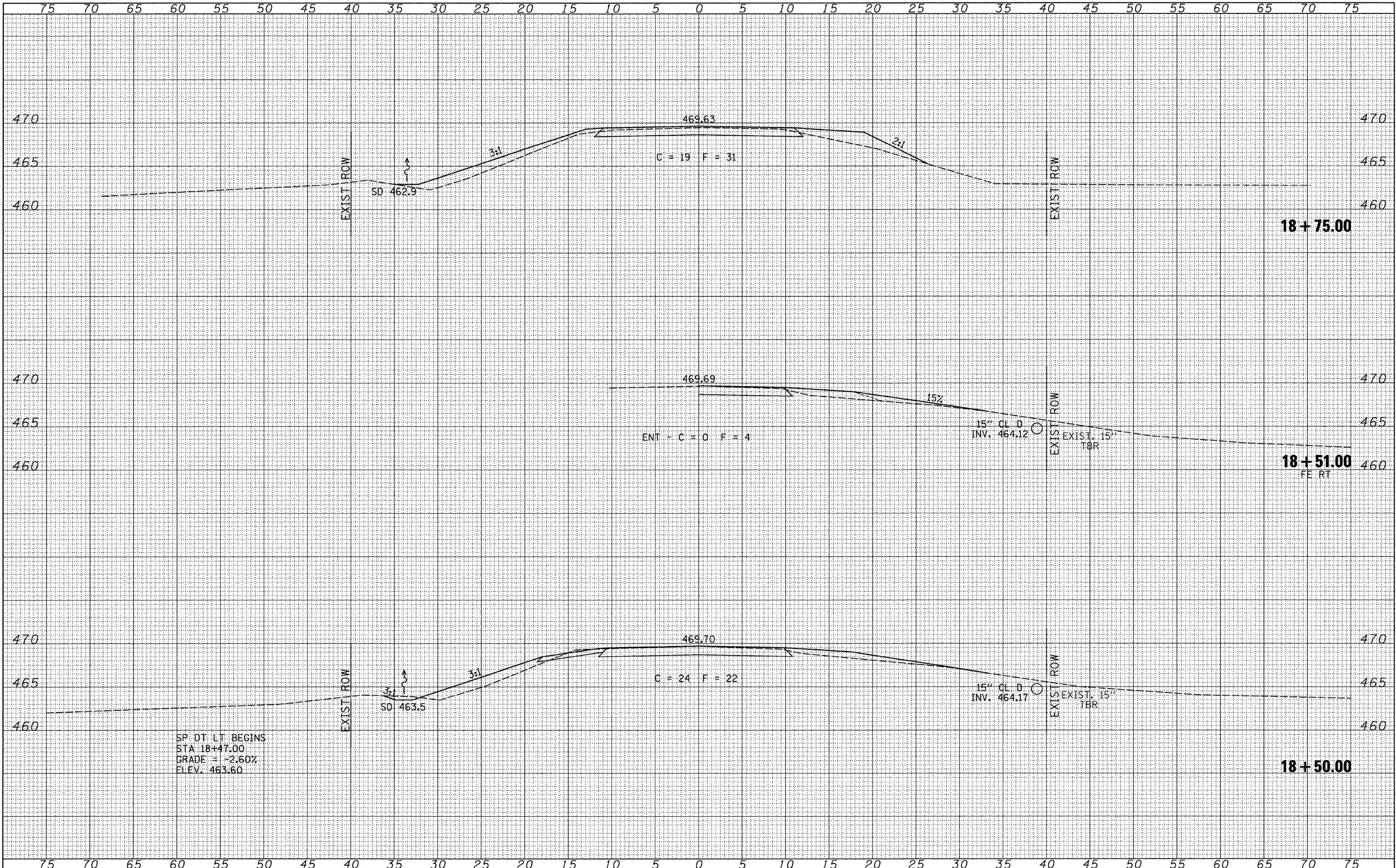


DATE	
BY	
FINAL SURVEY	SURVEYED
NOTE BOOK	PLOTTED
NO.	TEMPLATE
	AREAS CHECKED

DATE	
BY	
ORIGINAL SURVEY	SURVEYED
NOTE BOOK	PLOTTED
NO.	TEMPLATE
	AREAS CHECKED



FILE NAME = W:\Bridges\2618 Mason\2618xsheets.dgn

USER NAME = jwhite
 PLOT SCALE = 5.0000' / IN.
 PLOT DATE = 10/5/2009

DESIGNED -	REVISED -
DRAWN -	REVISED -
CHECKED -	REVISED -
DATE -	REVISED -

**MASON COUNTY
 COUNTY HIGHWAY 3
 OVER QUIVER CREEK**

CROSS SECTIONS

SCALE: 1"=5' SHEET NO. 2 OF 5 SHEETS STA. 18+50.00 TO STA. 18+75.00

F.A.S. RTE.	SECTION	COUNTY	TOTAL SHEETS	SHEET NO.
568	07-00032-01-BR	MASON	21	18
CONTRACT NO. 93505				
FED. ROAD DIST. NO. 7 [ILLINOIS] FED. AID PROJECT BRS-0568102				