

F.A.S. RTE.	SECTION	COUNTY	TOTAL SHEETS	SHEET NO.
568	07-00032-01-BR	MASON	21	1
FED. ROAD DIST. NO. 7		ILLINOIS	CONTRACT NO. 93505	

**STATE OF ILLINOIS
DEPARTMENT OF TRANSPORTATION
PLANS FOR PROPOSED
HIGHWAY BRIDGE PROGRAM
MASON COUNTY**

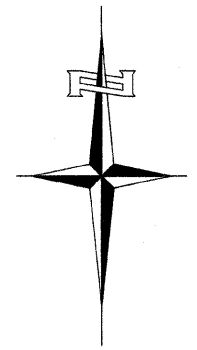
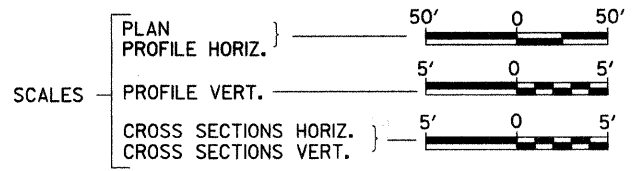
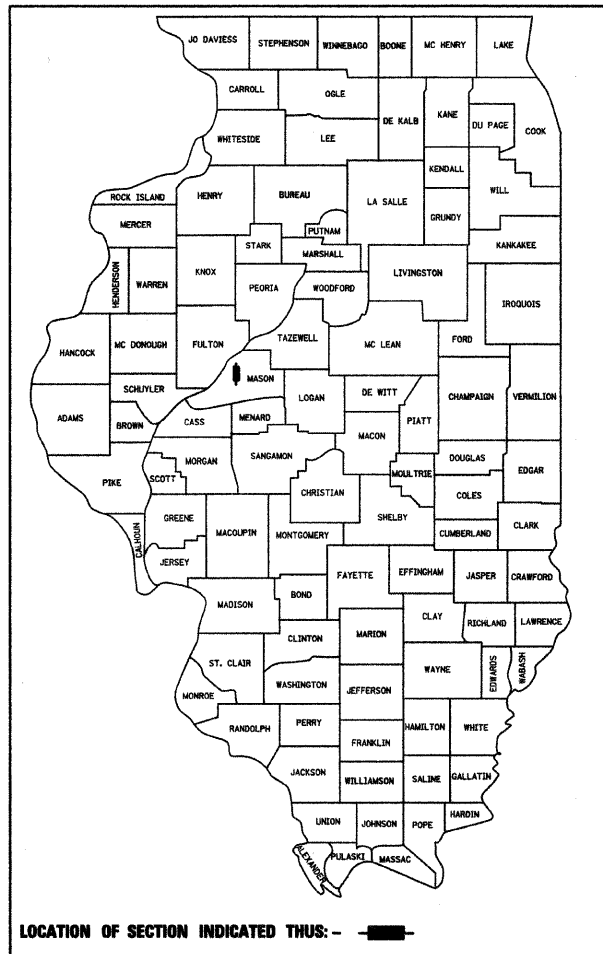
**SECTION 07-00032-01-BR
F.A.S. 568 (CH 3) OVER QUIVER CREEK
PROJECT NO. BRS-0568(102)
JOB NUMBER C-96-215-10**

INDEX OF SHEETS

SHEET NO.	DESCRIPTION
1.	COVER SHEET
2.	GENERAL NOTES, DETAILS, TYPICAL SECTIONS
3.	SUMMARY OF QUANTITIES, SCHEDULES OF QUANTITIES
4.	TRAFFIC CONTROL PLAN
5.	EROSION CONTROL PLAN
6.	PLAN AND PROFILE
7.-16.	STRUCTURE PLANS
17.-21.	CROSS SECTIONS

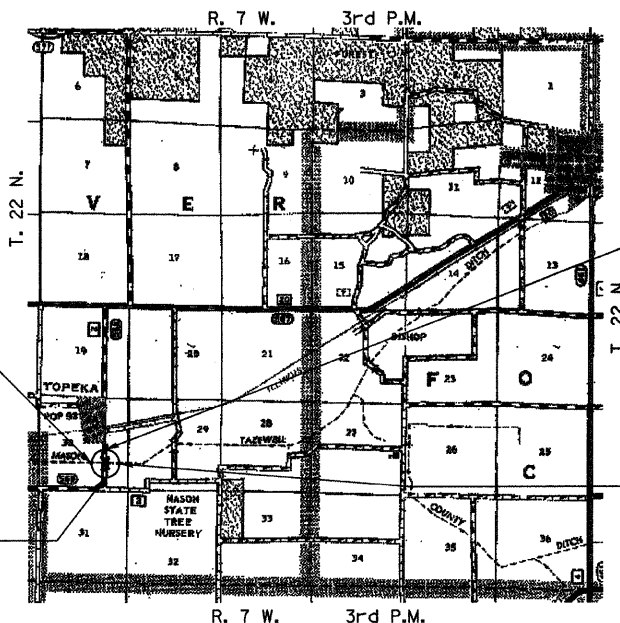
REQUIRED HIGHWAY STANDARDS

000001-05
280001-05
515001-03
630301-05
635006-03
701901-01
BLR 21-8
BLR 26-2
BLR 27-1



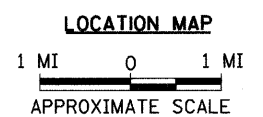
PROPOSED STRUCTURE NO. 063-3011
THREE SPAN 17' & 33' P.P.C. DECK BEAM
STRUCTURE ON CONCRETE SPILL THRU PILE BENT
ABUTMENTS AND CONCRETE ENCASED PIERS,
145'-0" BK. TO BK. AND 30'-0" O. TO O.,
NO SKEW

SECTION 07-00032-01-BR
BEGINS
STATION 18+25.00



SECTION 07-00032-01-BR
ENDS
STATION 21+75.00

EXISTING STRUCTURE 063-3010
THREE SPAN REINFORCED CONCRETE DECK
ON STEEL STRINGERS SUPERSTRUCTURE ON
SPILL THRU CONCRETE PILE BENT ABUTMENTS
AND CONCRETE PILE BENT PIERS,
135'-0" BK. TO BK., AND 27'-8" O. TO O.,
NO SKEW (TO BE REMOVED)



NET LENGTH OF PROJECT = 350.00 FEET = 0.066 MILES
DESIGN CLASSIFICATION: MAJOR-COLLECTOR (NON-URBAN)
DESIGN ADT = 175 (2009)
DESIGN SPEED = 40 MPH

UTILITY COMPANIES

AMEREN CIPS
BEARDSTOWN, ILLINOIS

CENTURYTEL
PEKIN, ILLINOIS

J.U.L.I.E.
JOINT UTILITY LOCATION INFORMATION FOR EXCAVATION
1-800-892-0123
OR 811

CONTRACT NO. 93505

Hutchison Engineering, Inc.
JACKSONVILLE ILLINOIS

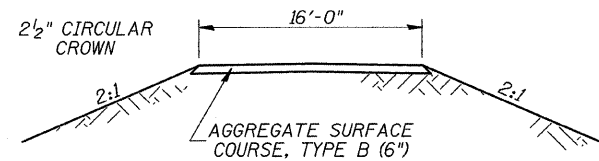
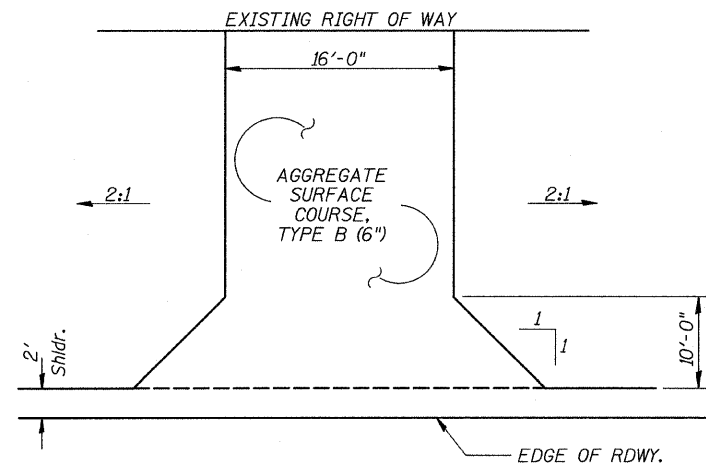
58335
REGISTERED
PROFESSIONAL
ENGINEER
ILLINOIS

Roger A. Duskell
SIGNATURE

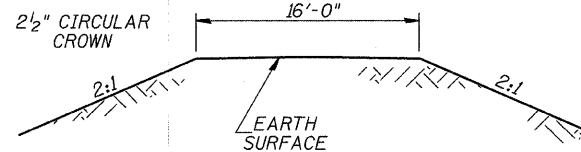
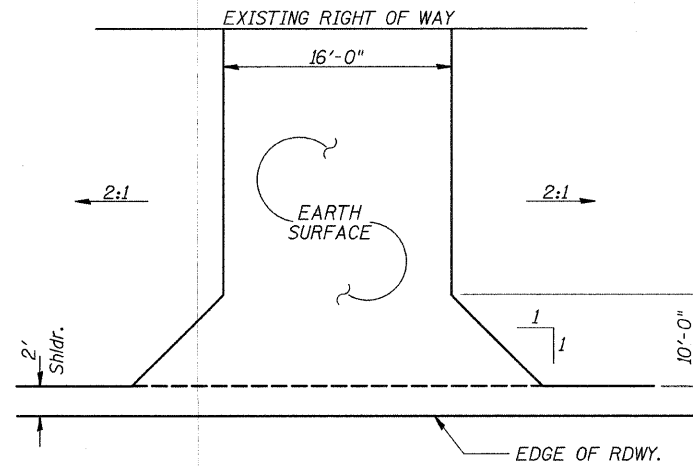
ENGINEERS SEAL

APPROVED	<i>Oct 6th</i>	2009
	<i>Mark H. Dwyer</i>	MASON COUNTY ENGINEER
PASSED	<i>OCTOBER 26</i>	2009
	<i>Jimmy Z...</i>	DISTRICT SIX ENGINEER OF LOCAL ROADS & STREETS
PASSED	<i>October 26</i>	2009
	<i>Ron Schambeau</i>	DISTRICT SIX ENGINEER OF CONSTRUCTION
Released For Bid Based on Limited Review	<i>OCTOBER 26</i>	2009
	<i>Roger A. Duskell</i>	DEPUTY DIRECTOR OF HIGHWAYS, REGION FOUR ENGINEER
		STATE OF ILLINOIS DEPARTMENT OF TRANSPORTATION

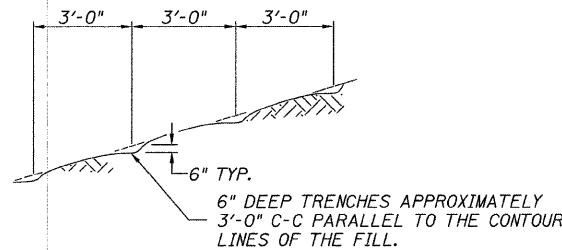
26BEC001



FIELD ENTRANCE
STA 18+37 LT

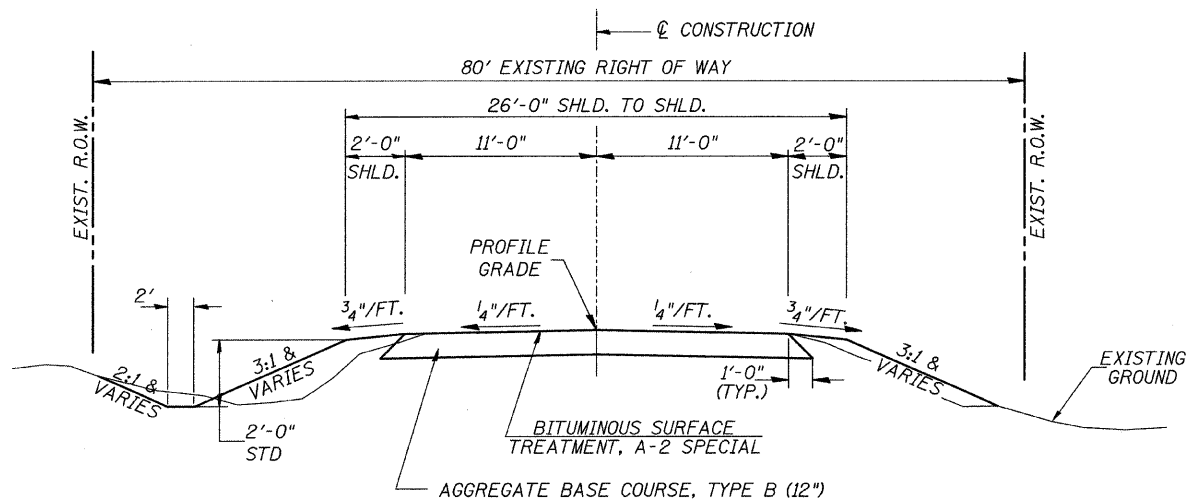


FIELD ENTRANCE
STA 18+51 RT



NOTE: ALL SLOPES 3:1 OR STEEPER AND GREATER THAN 5' IN HEIGHT SHALL BE CONTOUR PLOWED AS SHOWN IN DETAIL. COST SHALL BE INCLUDED WITH SEEDING, CLASS 2 (SPECIAL).

DETAIL OF CONTOUR PLOWING

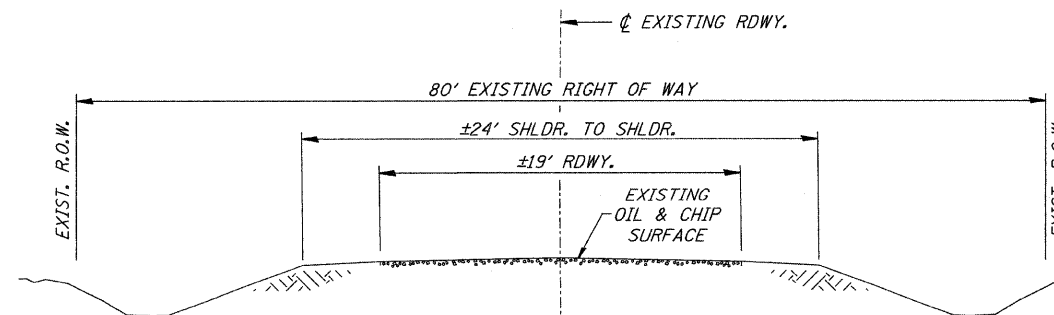


CONSTRUCT GUARDRAIL SHOULDER WIDENING IN ACCORDANCE WITH STD 630301

PROPOSED TYPICAL SECTION

STA. 18+25.00 TO STA. 19+27.50
STA. 20+72.50 TO STA. 21+75.00
EXCEPT TRANSITIONS

BRIDGE OMISSION
STA. 19+27.50 TO STA. 20+72.50



EXISTING TYPICAL SECTION

GENERAL NOTES

THE REMOVAL OF EXISTING OIL & CHIP SURFACE AND GRAVEL OR CRUSHED STONE BASE COURSE WHICH MAY BE NECESSARY FOR THE CONSTRUCTION OF THE NEW BRIDGE SHALL BE REMOVED AS EARTH EXCAVATION AND NO COMPENSATION WILL BE ALLOWED FOR ADDITIONAL LABOR OR EQUIPMENT REQUIRED.

ALL WASTE OR UNDESIRABLE MATERIAL AS IDENTIFIED BY THE ENGINEER SHALL BE DISPOSED OF OUTSIDE THE LIMITS OF THE RIGHT OF WAY AT THE CONTRACTOR'S EXPENSE.

ALL EXISTING PRIVATELY OWNED UTILITIES REQUIRING ADJUSTMENT WILL BE MADE BY THE UTILITY COMPANY INVOLVED. WHERE NO PROVISIONS HAVE BEEN MADE FOR ADJUSTMENTS ON THE PLANS, NO ADDITIONAL COMPENSATION WILL BE ALLOWED DUE TO DELAYS OR INCONVENIENCES CAUSED BY THE SAID UTILITY ADJUSTMENTS.

THE PROFILE GRADE ELEVATIONS SHOWN ON THE PLAN AND PROFILE SHEETS AND IN THE STATION CROSS SECTIONS ARE TO THE TOP OF THE FINISHED SURFACE.

ANY REFERENCE TO STANDARDS THROUGHOUT THE PLANS SHALL BE INTERPRETED TO BE THE LATEST STANDARDS OF THE ILLINOIS DEPARTMENT OF TRANSPORTATION

THE LOCATION OF UNDERGROUND UTILITIES SHOWN ON THE PLANS REPRESENTS THE BEST KNOWLEDGE OF THE COUNTY. IT SHALL BE THE CONTRACTOR'S RESPONSIBILITY TO VERIFY LOCATIONS OF UNDERGROUND INSTALLATIONS BEFORE STARTING CONSTRUCTION OPERATIONS. THE CONTRACTOR SHALL INDEMNIFY THE COUNTY, ITS OFFICERS AND EMPLOYEES AGAINST ALL CLAIMS DUE TO DAMAGE TO CORPORATE OR PRIVATE PROPERTY RESULTING FROM HIS CONSTRUCTION OPERATIONS AS DESCRIBED IN ARTICLES 107.20 AND 107.26 OF THE STANDARD SPECIFICATIONS.

THE CONTRACTOR MAY BE REQUIRED TO CONDUCT SOME OF HIS GRADING AND TRENCHING OPERATIONS AROUND TRANSMISSION POLES AND UNDER TRANSMISSION LINES. THE ADDED COST OF SO DOING SHALL BE INCLUDED IN THE COST OF EARTH EXCAVATION.

WHERE SECTION OR SUBSECTION MONUMENTS ARE ENCOUNTERED, THE ENGINEER SHALL BE NOTIFIED BEFORE SUCH MONUMENTS ARE REMOVED. THE CONTRACTOR SHALL PROTECT AND PRESERVE PROPERTY MARKERS UNTIL THE OWNER, AN AUTHORIZED SURVEYOR, OR AGENT, HAS WITNESSED OR OTHERWISE REFERENCED THEIR LOCATION.

ALL ELEVATIONS SHOWN REFER U.S.G.S. MEAN SEA LEVEL DATUM.

MIX DESIGN TABLE

MIXTURE USE	SURFACE (MIX "C"), N50
PG GRADE	PG 64-22
DESIGN AIR VOIDS	4% @ N50
MAX COMPOSITION (GRADATION MIXTURE)	IL-9.5 or 12.5
FRICTION AGGREGATE	MIXTURE C

If RAP option is selected, the asphalt cement grade may need to be adjusted. This will be determined by the Engineer.

SUMMARY OF QUANTITIES

CODE NO.	ITEM	UNIT	QUANTITY
20200100	EARTH EXCAVATION	CU YD	160
20300100	CHANNEL EXCAVATION	CU YD	790
① 25001000	SEEDING, CLASS 2 (SPECIAL)	ACRE	0.3
25100630	EROSION CONTROL BLANKET	SQ YD	62
28000250	TEMPORARY EROSION CONTROL SEEDING	POUND	150
28000305	TEMPORARY DITCH CHECKS	FOOT	20
28000400	PERIMETER EROSION BARRIER	FOOT	420
28000500	INLET AND PIPE PROTECTION	EACH	2
28100209	STONE RIPRAP, CLASS A5	TON	845
① 28200200	FILTER FABRIC	SQ YD	715
35100100	AGGREGATE BASE COURSE, TYPE A	TON	319
40200800	AGGREGATE SURFACE COURSE, TYPE B	TON	21
40603310	HOT-MIX ASPHALT SURFACE COURSE, MIX "C", N50	TON	69
① 50100100	REMOVAL OF EXISTING STRUCTURES	EACH	1
50105220	PIPE CULVERT REMOVAL	FOOT	44
50200100	STRUCTURE EXCAVATION	CU YD	75
50300225	CONCRETE STRUCTURES	CU YD	96.8
50300280	CONCRETE ENCASEMENT	CU YD	8.6
① 50400305	PRECAST PRESTRESSED CONCRETE DECK BEAMS (17" DEPTH)	SQ FT	1,890
① 50400605	PRECAST PRESTRESSED CONCRETE DECK BEAMS (33" DEPTH)	SQ FT	2,400
50800105	REINFORCEMENT BARS	POUND	8,610
* 50900205	STEEL RAILING, TYPE S1	FOOT	290
51200957	FURNISHING METAL SHELL PILES 12"x0.250"	FOOT	168
51200959	FURNISHING METAL SHELL PILES 14"x0.312"	FOOT	414
① 51202305	DRIVING PILES	FOOT	582
① 51203200	TEST PILE METAL SHELLS	EACH	4
51204650	PILE SHOES	EACH	14
51500100	NAME PLATES	EACH	1
① 542D0220	PIPE CULVERTS, CLASS D, TYPE 1 15"	FOOT	44
58100200	WATERPROOFING MEMBRANE SYSTEM	SQ YD	483
58300100	PORTLAND CEMENT MORTAR FAIRING COURSE	FOOT	375
① 59300100	CONTROLLED LOW-STRENGTH MATERIAL	CU YD	14.2
* 63100075	TRAFFIC BARRIER TERMINAL, TYPE 5A	EACH	2
* 63100167	TRAFFIC BARRIER TERMINAL, TYPE 1 (SPECIAL) TANGENT	EACH	2
67100100	MOBILIZATION	L SUM	1
① 70103700	TRAFFIC CONTROL COMPLETE	L SUM	1
* ① 78201000	TERMINAL MARKER - DIRECT APPLIED	EACH	4
① X5020501	UNDERWATER STRUCTURE EXCAVATION PROTECTION, LOCATION 1	EACH	1
① X5020502	UNDERWATER STRUCTURE EXCAVATION PROTECTION, LOCATION 2	EACH	1
① XX004450	BITUMINOUS SURFACE TREATMENT, A-2 SPECIAL	SQ YD	481

① SEE SPECIAL PROVISIONS * SPECIALTY ITEMS CONSTRUCTION TYPE CODE: X080-2A

AGGREGATE BASE COURSE, TYPE A

STATION TO STATION	THICKNESS	WIDTH	LENGTH	TON
18+25.00 - 18+75.00	1.00'	21.24' AVG.	50.00'	74
18+75.00 - 19+27.50	1.00'	23.00'	52.50'	85
20+72.50 - 21+25.00	1.00'	23.00'	52.50'	85
21+25.00 - 21+75.00	1.00'	21.42' AVG.	50.00'	75
TOTAL				319

AGGREGATE SURFACE COURSE, TYPE B

STATION TO STATION	WIDTH	LENGTH	TON
ENTR. - 18+37 LT	16.0' & VAR.	29.80'	21
TOTAL			21

EROSION CONTROL BLANKET

STATION TO STATION	SIDE	WIDTH	LENGTH	AREA (SQ YD)
18+47 - 19+40	LEFT	6'	93'	62
TOTAL				62

BITUMINOUS SURFACE TREATMENT, A-2 SPECIAL

STATION TO STATION	WIDTH	LENGTH	SQ YD
18+25.00 - 18+75.00	20.24' AVG.	50.00'	112
18+75.00 - 19+27.50	22.00'	52.50'	128
20+72.50 - 21+25.00	22.00'	52.50'	128
21+25.00 - 21+75.00	20.42' AVG.	50.00'	113
TOTAL			481

TRAFFIC BARRIER TERMINAL, TYPE 5A

STATION TO STATION	SIDE	EACH
19+14.25 - 19+27.50	RIGHT	1
20+72.50 - 20+85.75	LEFT	1
TOTAL		2

TRAFFIC BARRIER TERMINAL, TYPE 1 (SPECIAL) TANGENT

STATION TO STATION	SIDE	EACH
18+64.25 - 19+14.25	RIGHT	1
20+85.75 - 21+35.75	LEFT	1
TOTAL		2

PIPE CULVERTS, CLASS D, TYPE 1 15"

STATION	SIDE	FOOT
18+37	LEFT	22
18+51	RIGHT	22
TOTAL		44

TEMPORARY DITCH CHECKS

STATION	SIDE	EACH
18+95	LEFT	1
19+40	LEFT	1
TOTAL		2

PIPE CULVERT REMOVAL

STATION	SIZE	SIDE	FOOT
18+37	15"	LEFT	22
18+51	15"	RIGHT	22
TOTAL			44

EARTHWORK SUMMARY

STATION TO STATION	EARTH EXCAVATION	CHANNEL EXCAVATION	STRUCTURE EXCAVATION	FILL	WASTE (SHORTAGE)
	CU YD	CU YD	CU YD	CU YD	CU YD
RDWY 18+25.00 - 19+27.50	82			112	(51)
RDWY 20+72.50 - 21+75.00	80			52	8
CHANNEL		790			
STRUCTURE			75		
TOTAL		162	790	75	164 (43)
USE		160	790	75	(45)*

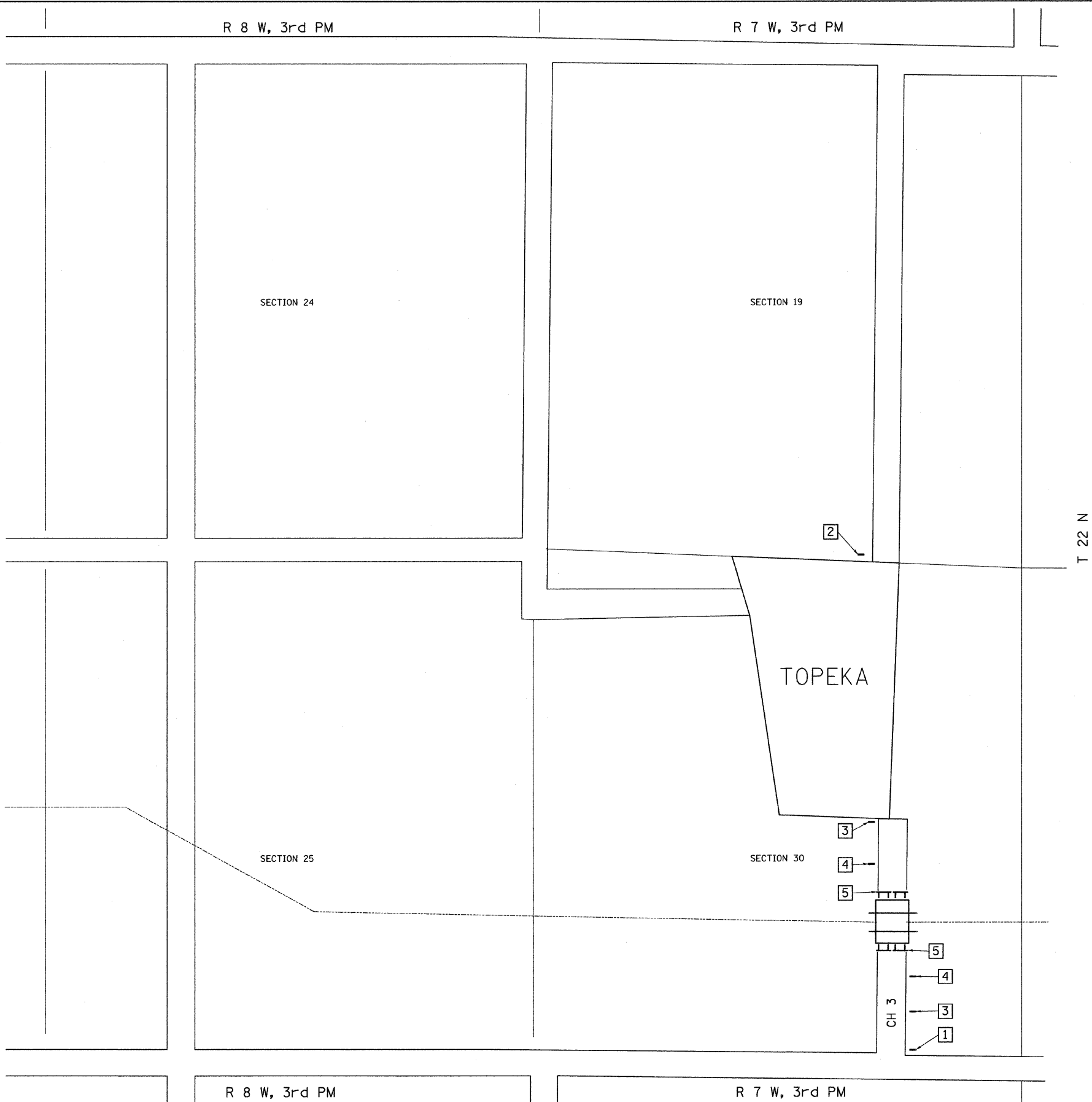
* TO BE OBTAINED FROM SUITABLE STRUCTURE/CHANNEL EXCAVATION (© 25% SHRINKAGE)

PERIMETER EROSION BARRIER

STATION TO STATION	SIDE	FOOT
18+25 - 18+50	LEFT	35
18+25 - 19+28	RIGHT	130
20+73 - 21+75	LEFT	135
20+73 - 21+75	RIGHT	120
TOTAL		420

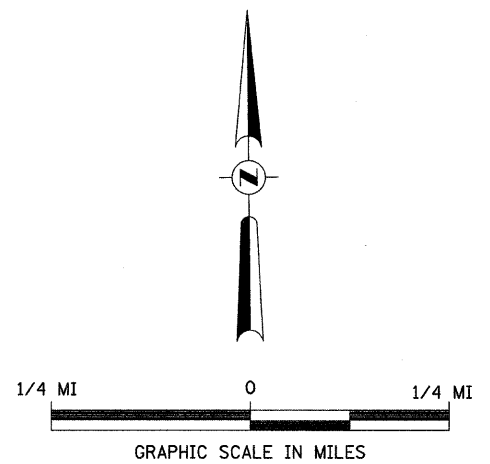
INLET & PIPE PROTECTION

STATION	SIDE	EACH
18+25	LEFT	1
18+40	RIGHT	1
TOTAL		2



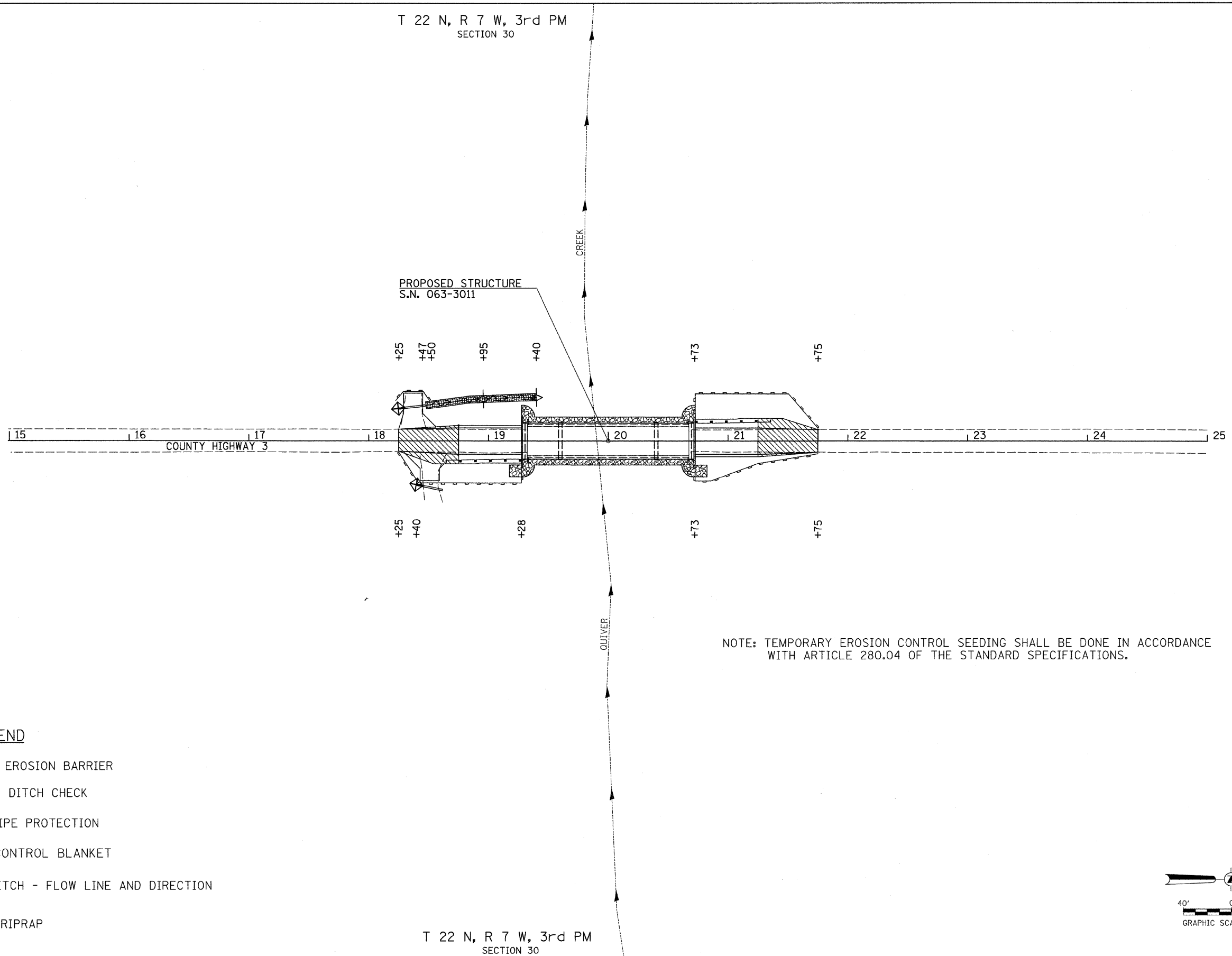
- 1 ROAD CLOSED 1/4 MILE AHEAD LOCAL TRAFFIC ONLY R11-3
- 2 ROAD CLOSED 3/4 MILE AHEAD LOCAL TRAFFIC ONLY R11-3
- 3 ROAD CLOSED AHEAD W20-3
- 4 ROAD CLOSED 500 FT W20-3
- 5 TYPE III BARRICADES

SEE STANDARD BLR 21 AND SPECIAL PROVISIONS







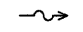

FILE NAME = V:\Bridge\2618 Mason\2618h001.dgn	USER NAME = jwhite	DESIGNED -	REVISED -	MASON COUNTY COUNTY HIGHWAY 3 OVER QUIVER CREEK	TRAFFIC CONTROL PLAN			F.A.S. RTE. 568	SECTION 07-00032-01-BR	COUNTY MASON	TOTAL SHEETS 21	SHEET NO. 4
	PLOT SCALE = 1:8000 1/4 IN.	DRAWN -	REVISED -		SCALE: NONE	SHEET NO. 1 OF 1 SHEETS	STA. 18+25.00 TO STA. 21+75.00	CONTRACT NO. 93505				
	PLOT DATE = 10/5/2009	CHECKED -	REVISED -		FED. ROAD DIST. NO. 7 [ILLINOIS] FED. AID PROJECT BR5-0568(102)							
		DATE -	REVISED -									

T 22 N, R 7 W, 3rd PM
SECTION 30

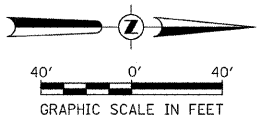


NOTE: TEMPORARY EROSION CONTROL SEEDING SHALL BE DONE IN ACCORDANCE WITH ARTICLE 280.04 OF THE STANDARD SPECIFICATIONS.

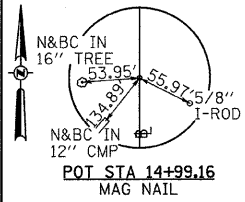
LEGEND

-  PERIMETER EROSION BARRIER
-  TEMPORARY DITCH CHECK
-  INLET & PIPE PROTECTION
-  EROSION CONTROL BLANKET
-  SPECIAL DITCH - FLOW LINE AND DIRECTION
-  PROPOSED RIPRAP

T 22 N, R 7 W, 3rd PM
SECTION 30

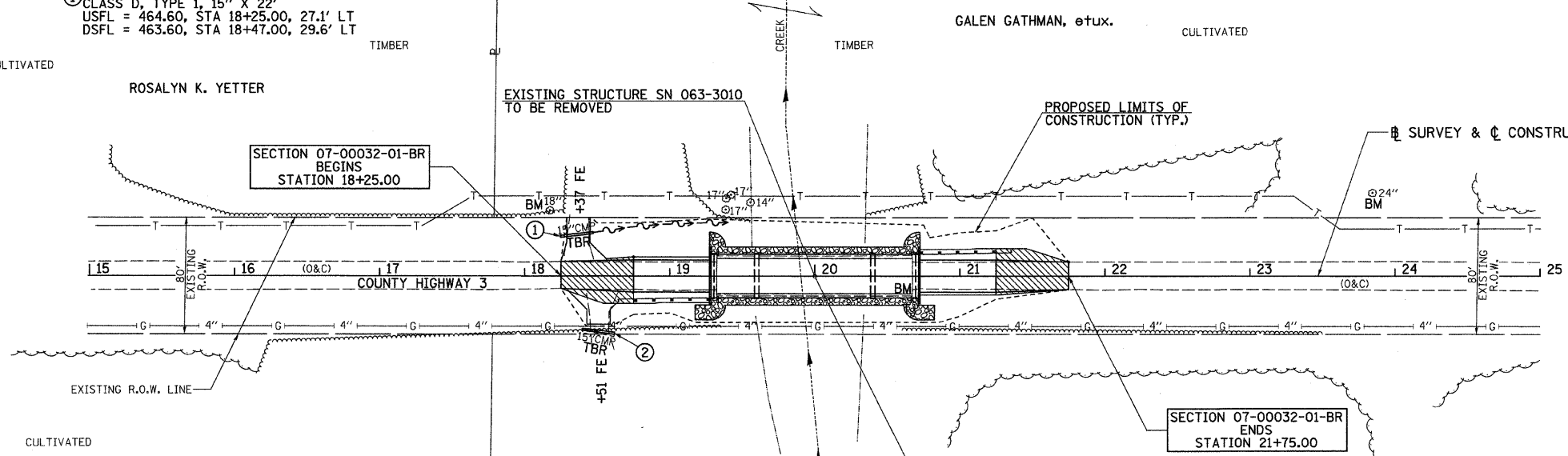
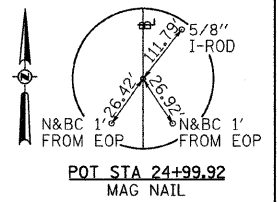


FILE NAME = V:\Bridge\2618 Mason\2618S001.dgn	USER NAME = jwhite	DESIGNED -	REVISED -	MASON COUNTY COUNTY HIGHWAY 3 OVER QUIVER CREEK	EROSION CONTROL PLAN	F.A.S. RTE. 568	SECTION 07-00032-01-BR	COUNTY MASON	TOTAL SHEETS 21	SHEET NO. 5		
						SCALE: 1" = 40'-0" SHEET NO. 1 OF 1 SHEETS STA. 18+25.00 TO STA. 21+75.00		CONTRACT NO. 93505				
						FED. ROAD DIST. NO. 7 ILLINOIS FED. AID PROJECT BR5-0568102						



① PROPOSED PIPE CULVERT
 CLASS D, TYPE 1, 15" X 22"
 USFL = 464.60, STA 18+25.00, 27.1' LT
 DSFL = 463.60, STA 18+47.00, 29.6' LT

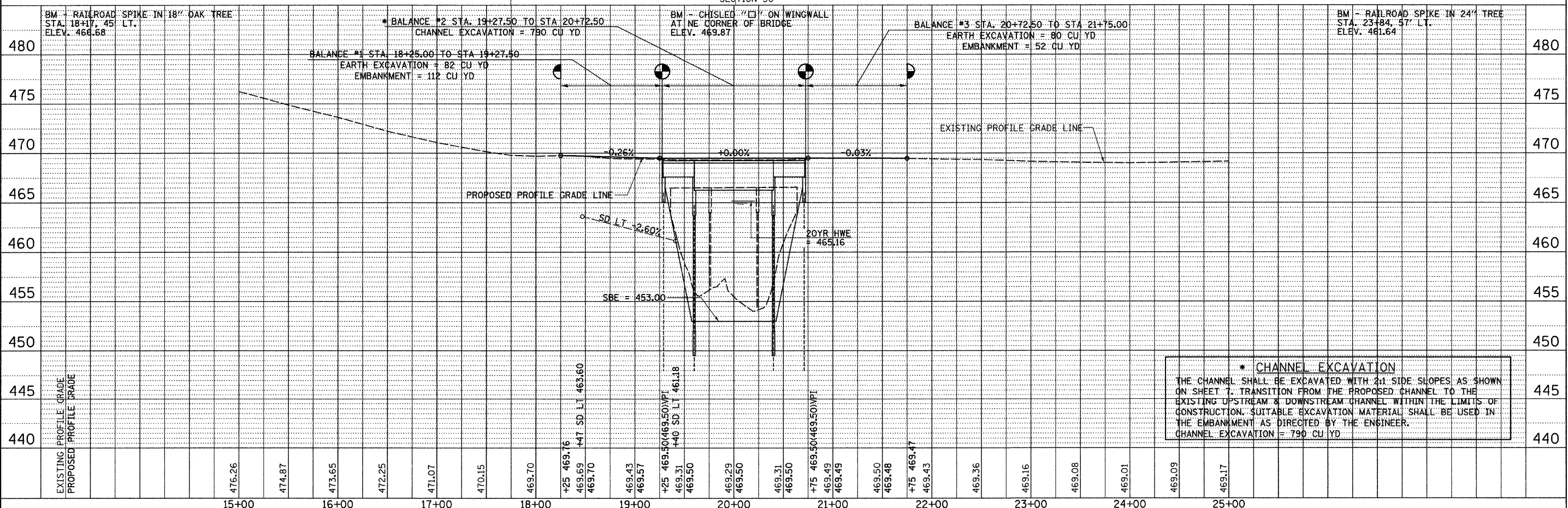
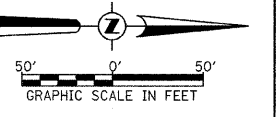
T 22 N, R 7 W, 3rd PM
 SECTION 30



- LEGEND**
- TRANSITION TO OR FROM EXISTING TO PROPOSED TYPICAL PAVEMENT
 - PROPOSED RIPRAP PLACEMENT
 - SPECIAL DITCH WITH FLOW DIRECTION
 - EXISTING UNDERGROUND TELEPHONE LINE
 - EXISTING GAS LINE

② PROPOSED PIPE CULVERT
 CLASS D, TYPE 1, 15" X 22"
 USFL = 464.74, STA 18+39.70, 36.6' RT
 DSFL = 463.53, STA 18+61.60, 39.6' RT

T 22 N, R 7 W, 3rd PM
 SECTION 30



*** CHANNEL EXCAVATION**
 THE CHANNEL SHALL BE EXCAVATED WITH 2:1 SIDE SLOPES AS SHOWN ON SHEET 7. TRANSITION FROM THE PROPOSED CHANNEL TO THE EXISTING UPSTREAM & DOWNSTREAM CHANNEL WITHIN THE LIMITS OF CONSTRUCTION. SUITABLE EXCAVATION MATERIAL SHALL BE USED IN THE EMBANKMENT AS DIRECTED BY THE ENGINEER.
 CHANNEL EXCAVATION = 790 CU YD

DATE	
BY	
PLANNED	
CHECKED	
NO. OF WAY CHECKED	
FILE NAME	

DATE	
BY	
PROFILING	
CHECKED	
NOTATIONS CHD	
NO.	

FILE NAME = V:\Bridges\2618 Mason\2618p001.dgn	USER NAME = jwhsto	DESIGNED -	REVISED -	MASON COUNTY COUNTY HIGHWAY 3 OVER QUIVER CREEK	PLAN AND PROFILE	F.A.S. RTE. 568	SECTION 07-00032-01-BR	COUNTY MASON	TOTAL SHEETS 21	SHEET NO. 6	CONTRACT NO. 93505
PLOT SCALE = 50.0000' / IN.	CHECKED -	REVISED -	SCALE: 1" = 50'-0"			SHEET NO. 1 OF 1 SHEETS	STA. 18+25.00 TO STA. 21+75.00	FED. ROAD DIST. NO. 7 [ILLINOIS]	FED. AID PROJECT BRS-0568102		
PLOT DATE = 10/5/2009	DATE -	REVISED -									

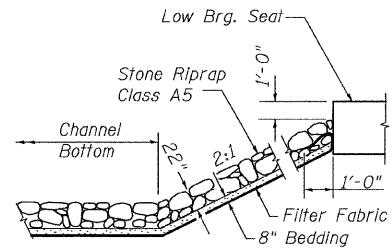
B.M.: RR Spike in 18" oak tree Sta. 18+17, 45' Lt. Elev. 466.68
 RR Spike in 24" tree Sta. 23+84, 57' Lt. Elev. 461.64

Existing Structure:

Three span reinforced concrete deck with curb on steel stringer superstructure supported on concrete pile bent piers and spill thru concrete pile bent abutments. The structure is 135'-0" back to back of abutments, 27'-8" out to out of deck and is not skewed. Str. No. 063-3010

Salvage: None

Road to be closed to traffic during construction.



STONE RIPRAP DETAIL

**QUIVER CREEK
 BUILT 200_ BY
 MASON COUNTY
 SEC. 07-00032-01-BR
 C.H. 3 STATION 20+00.00
 F.A. PROJ. BRS-0568(102)
 STR. NO. 063-3011 LOADING HL-93**

NAME PLATE

Locate Name Plate at S.E. Wingwall Corner of Bridge (See Std. 515001)

GENERAL NOTES

The Contractor shall drive test piles to 110% of the nominal required bearing specified in production locations of the substructures specified or approved by the Engineer before ordering the remainder of the piles.

For Soil Boring Logs, See Special Provisions.

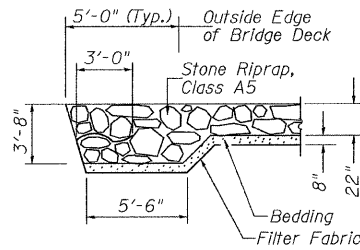
A Corrosion Inhibitor shall be used in the concrete for Precast Prestressed Concrete Deck Beams according to Article 1020.05(b)(12) of the Standard Specifications.

Reinforcement Bars shall conform to the requirements of ASTM A706 Grade 60. Reinforcement Bars designated (E) shall be epoxy coated.

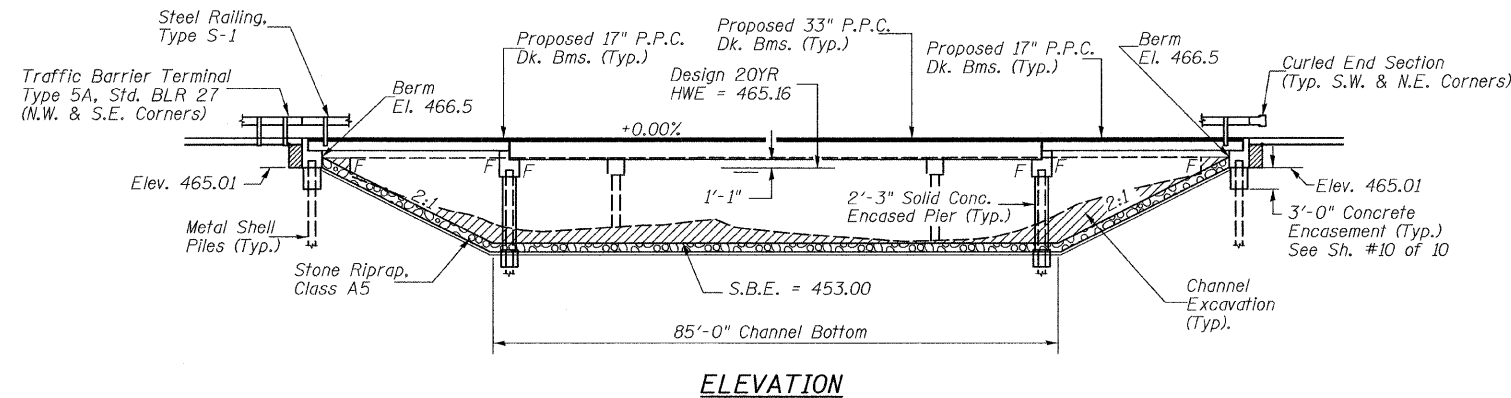
Layout of the slope protection system may be varied in the field to suit ground conditions as directed by the Engineer.

The existing structural steel coating may contain lead. The contractor should take appropriate precautions to deal with the presence of lead on this project.

The top surface of the beams shall be finished according to the IDOT Manual for Fabrication of Precast Prestressed Concrete Products.

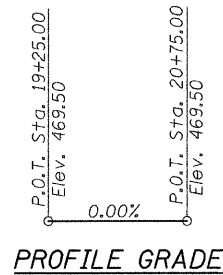


SECTION A-A

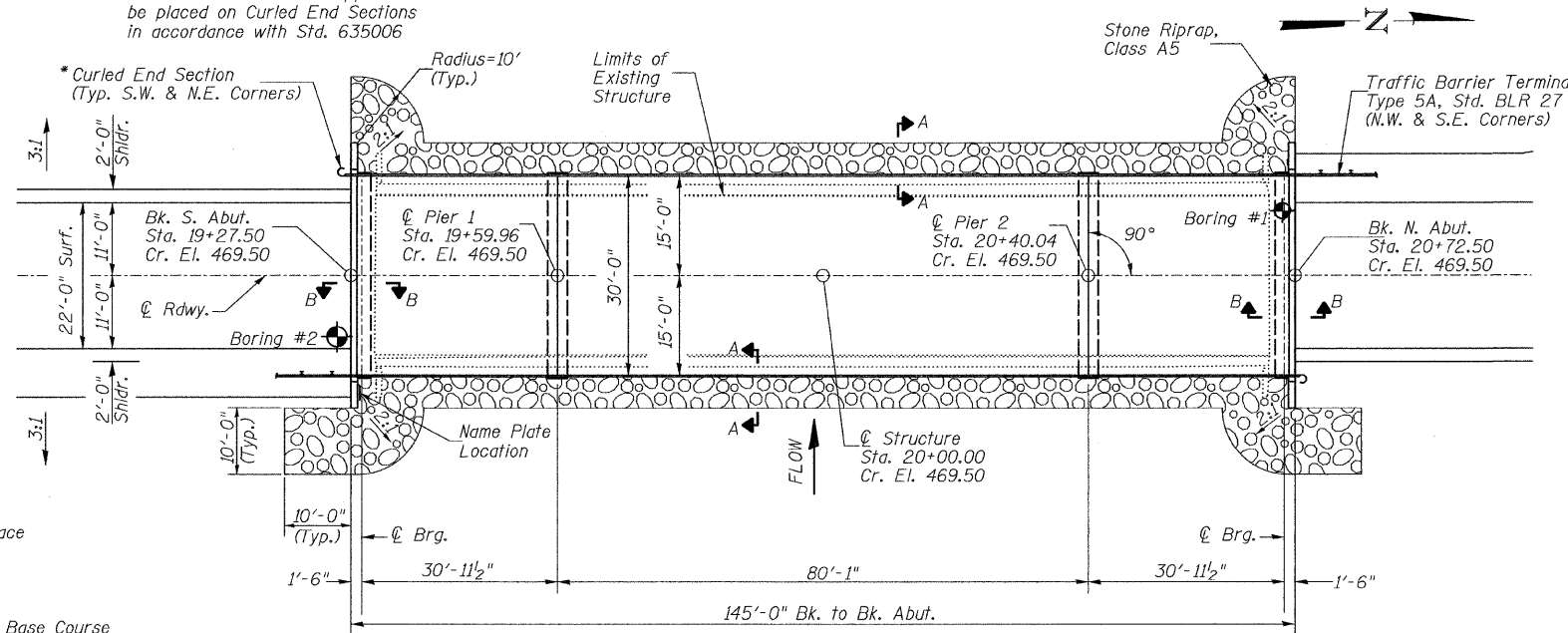


ELEVATION

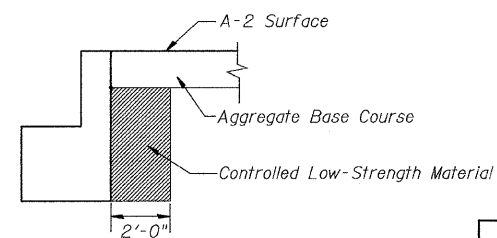
* Terminal Marker-Direct Applied to be placed on Curled End Sections in accordance with Std. 635006



PROFILE GRADE



PLAN



SECTION B-B

DESIGN SCOUR TABLE

Location	S. Abut	Pier 1	Pier 2	N. Abut
Design Scour Elevation	465.01	448.93	448.93	465.01

WATERWAY INFORMATION

Drainage Area = 177.2 Sq. Mi.		Low Grade Elev. = 469.01 @ Sta. 24+00.00							
Flood Yr.	Q C.F.S.	Opening Exist.	Opening Prop.	Nat. H.W.E.	Head - Ft. Exist.	Head - Ft. Prop.	Headwater El. Exist.	Headwater El. Prop.	
Design	20	6,206	967	1,277	465.16	0.51	0.23	465.67	465.39
Base	100	8,990	1,065	1,380	465.95	0.98	0.44	466.93	466.39

Construction of this project complies with IDNR, Office of Water Resources Statewide Permit No. 2

DESIGN SPECIFICATIONS

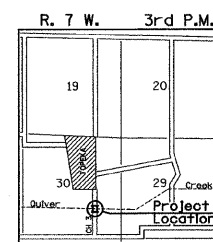
2007 AASHTO (LRFD) & Interims

DESIGN STRESSES

(FIELD UNITS) $f'_c = 3,500$ p.s.i. $f_y = 60,000$ p.s.i. (Rein.)
 (PRECAST PRESTRESSED UNITS) $f'_c = 6,000$ p.s.i. $f'_ci = 5,000$ p.s.i. $f'_s = 270,000$ p.s.i. ($1/2$ " Strands) $f'_si = 201,960$ p.s.i. ($1/2$ " Strands)

LOADING HL-93

Allow 50#/sq. ft. for future wearing surface.

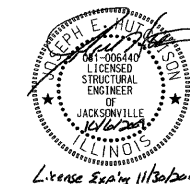


LOCATION SKETCH

TOTAL BILL OF MATERIAL

ITEM	UNIT	SUPER	SUB	TOTAL
Channel Excavation	CU YD	---	790	790
Stone Riprap, Class A5	TON	---	845	845
Filter Fabric	SQ YD	---	715	715
Removal of Existing Structures	EACH	---	---	1
Structure Excavation	CU YD	---	75	75
Concrete Structures	CU YD	---	96.8	96.8
Precast Prestressed Concrete Deck Beams (17" Depth)	SQ FT	1,890	---	1,890
Precast Prestressed Concrete Deck Beams (33" Depth)	SQ FT	2,400	---	2,400
Reinforcement Bars	POUND	---	8,610	8,610
Steel Railing, Type S1	FOOT	290	---	290
Furnishing Metal Shell Piles 12"x0.250"	FOOT	---	168	168
Furnishing Metal Shell Piles 14"x0.312"	FOOT	---	414	414
Driving Piles	FOOT	---	582	582
Test Pile Metal Shells	EACH	---	4	4
Pile Shoes	EACH	---	14	14
Concrete Encasement	CU YD	---	8.6	8.6
Name Plates	EACH	---	1	1
Waterproofing Membrane System	SQ YD	483	---	483
Portland Cement Mortar Fairing Course	FOOT	375	---	375
Controlled Low-Strength Material	CU YD	---	14.2	14.2
Underwater Structure Excavation Protection, Location 1 (Pier #1)	EACH	---	1	1
Underwater Structure Excavation Protection, Location 2 (Pier #2)	EACH	---	1	1
Hot-Mix Asphalt Surface Course, Mix "C", N50	TON	69	---	69

① See Special Provisions

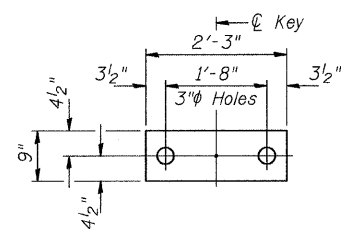


I certify that to the best of my knowledge, information and belief, this bridge design is structurally adequate for the design loading shown on the plans. The design is an economical one for the style of structure and complies with requirements of the current AASHTO Standard Specification for Highway Bridges. This design complies with all requirements of the current AASHTO Guide Specifications for Seismic Design of highway bridges.

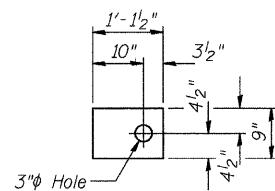
[Signature] 10/16/2009
 Illinois Structural No. 6440
 Expires 11/30/2010

**GENERAL PLAN & ELEVATION
 MASON COUNTY
 SECTION 07-00032-01-BR
 C.H. 3 OVER QUIVER CREEK**

SHEET NO. 1	ROUTE NO.	SECTION	COUNTY	TOTAL SHEETS	SHEET NO.
10 SHEETS	CH 3	07-00032-01-BR	MASON	21	7
S.N. 063-3011			CONTRACT NO. 93505		
FED. ROAD DIST. NO. 7 ILLINOIS			FED. AID PROJECT BRS-0568(102)		

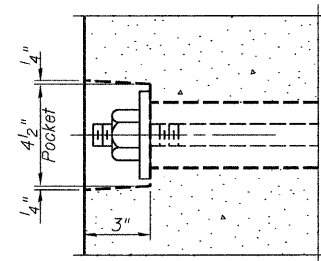


1/2" FABRIC BEARING PAD
(Interior) 36 required

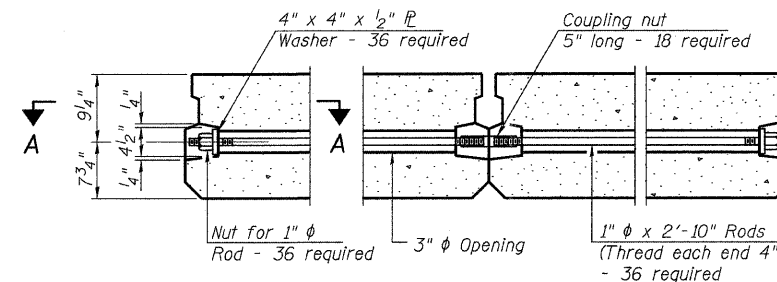


1/2" FABRIC BEARING PAD
(Exterior) 8 required

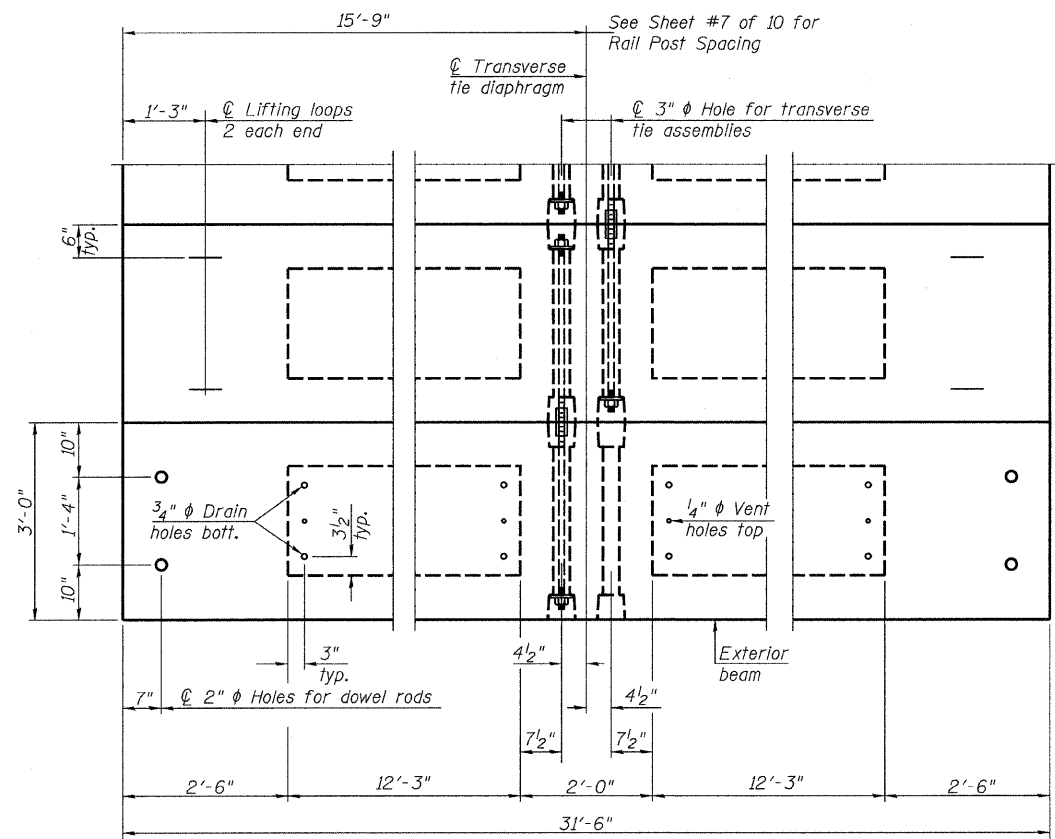
FIXED



SECTION A-A

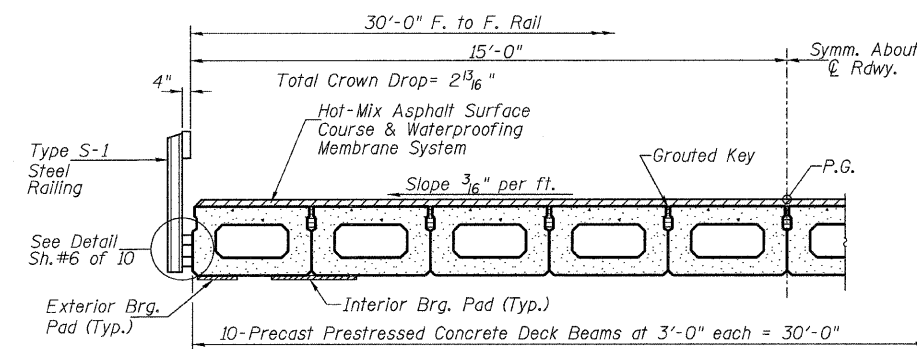


TYPICAL TRANSVERSE TIE ASSEMBLY



PLAN VIEW

Note: Connect beams in pairs with the transverse tie configuration shown.



HALF CROSS SECTION

BILL OF MATERIAL

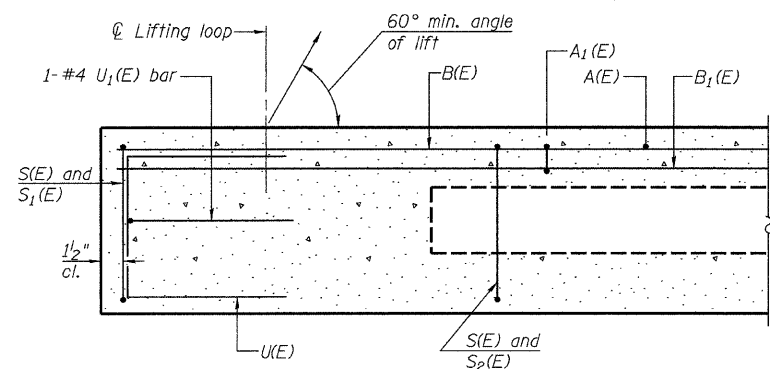
ITEM	UNIT	QUANTITY
Precast Prestressed Concrete Deck Beams (17" Depth)	SQ FT	1,890

NOTES

- Prestressing steel shall be uncoated high strength, low relaxation 7-wire strand, Grade 270. The nominal diameter shall be 1/2" and the nominal cross-sectional area shall be 0.153 sq. in. The 1" rods in the transverse tie assembly shall be tightened to a snug fit and the threads set. Pockets on exterior faces of bridge shall be filled with grout after transverse tie assembly is in place.
- Reinforcement bars shall conform to ASTM A 706, Grade 60. (See Special Provisions)
- Two 1/8" fabric adjusting shims of the dimensions of the exterior bearing pad shall be provided for each bearing pad location.
- A minimum 2 1/2" diameter lifting pin shall be used to engage the lifting loops during handling.
- Corrosion Inhibitor, per Article 1020.05(b)(12) and 1021.06 of the Standard Specifications, shall be used in the concrete for precast prestressed concrete deck beams.
- Compressive strength of prestressed concrete, f'c, shall be 6000 psi.
- Compressive strength of prestressed concrete at release, f'ci, shall be 5000 psi.

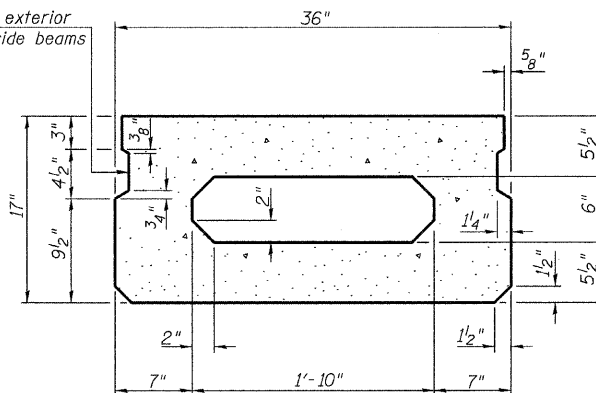
SUPERSTRUCTURE - SPANS 1 & 3
MASON COUNTY
SECTION 07-00032-01-BR
C.H. 3 OVER QUIVER CREEK

SHEET NO. 2	ROUTE NO.	SECTION	COUNTY	TOTAL SHEETS	SHEET NO.
10 SHEETS	CH 3	07-00032-01-BR	MASON	21	8
S.N. 063-3011			CONTRACT NO. 98505		
FED. ROAD DIST. NO. 7 ILLINOIS			FED. AID PROJECT BRS-0568(102)		



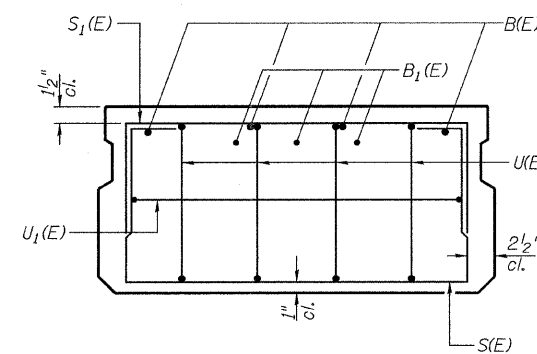
SECTION C-C

**Omit key on exterior face of outside beams

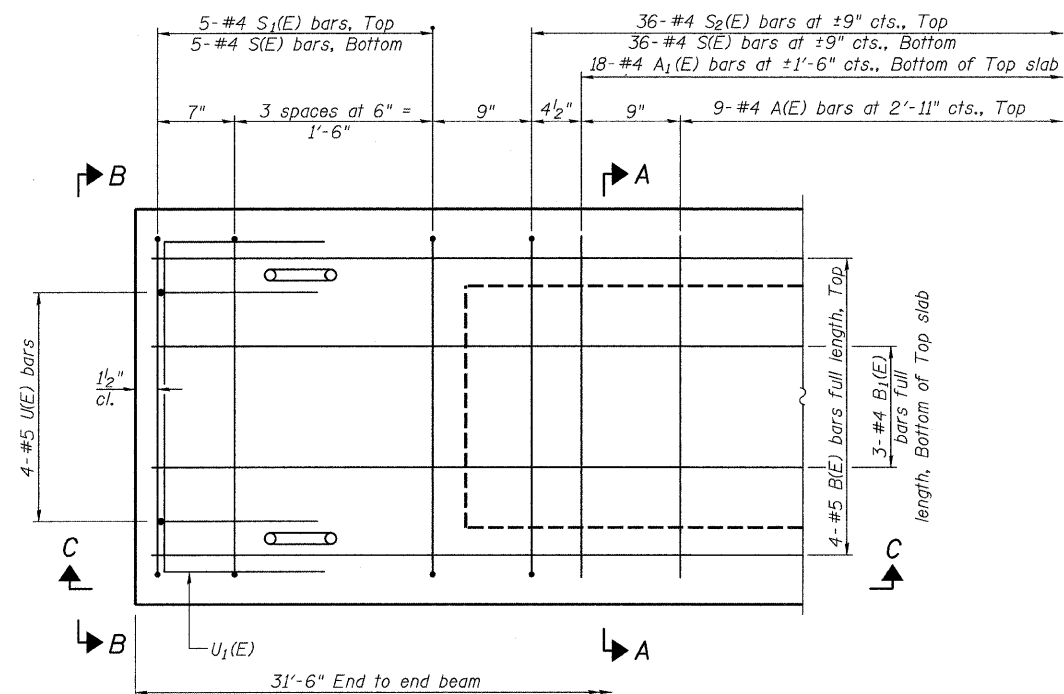


SECTION A-A
(Showing dimensions)

**Rail post anchor devices (Sheet 6 of 10) to be cast into exterior face of outside beams.

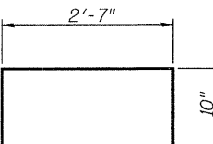
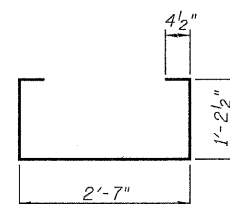


VIEW B-B



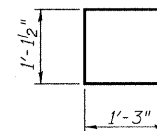
PLAN VIEW

Note: Spacing of S(E) and S2(E) bars may be adjusted up to 4" in the immediate area of the transverse tie diaphragms to miss the block outs for the transverse ties.

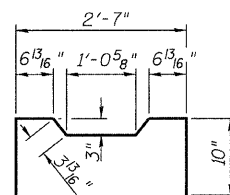


BAR S1(E)

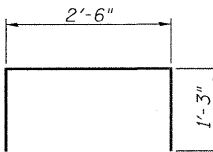
BAR S(E)



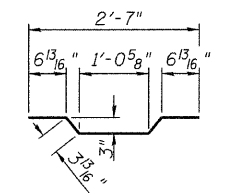
BAR U1(E)



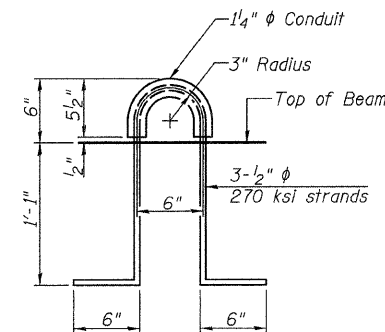
BAR S2(E)



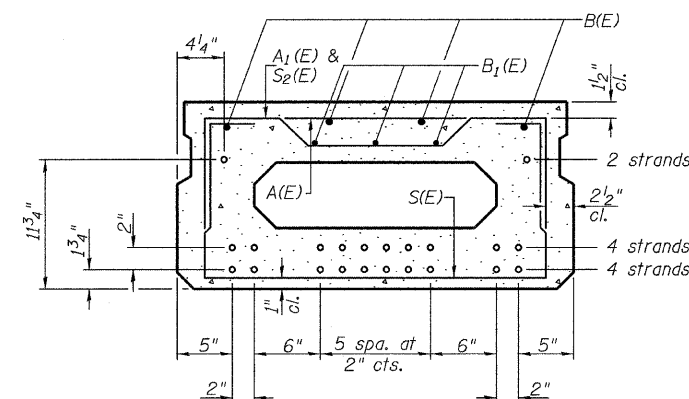
BAR U1(E)



BAR A1(E)



LIFTING LOOP DETAIL



SECTION A-A

10-1/2" Strands Each Strand Stressed to 30,900 Lbs.
4-Strands 1 3/4" up, 4-Strands 3 3/4" up, 2-Strands 11 3/4" up

Note: Place the number of strands specified in each row symmetrically about the centerline of beam in the permissible strand locations shown.

BAR LIST-ONE BEAM ONLY

(For information only)

Bar	No.	Size	Length	Shape
A(E)	9	#4	2'-7"	—
A1(E)	18	#4	2'-10"	—
B(E)	4	#5	*31'-3"	—
B1(E)	3	#4	*31'-3"	—
S(E)	46	#4	5'-9"	□
S1(E)	10	#4	4'-3"	□
S2(E)	36	#4	4'-6"	□
U(E)	8	#5	3'-8"	□
U1(E)	2	#4	5'-0"	□

* Total Length, Lap as necessary

Note: See sheet 2 of 10 for additional details and Bill of Material.

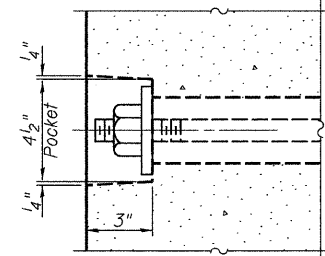
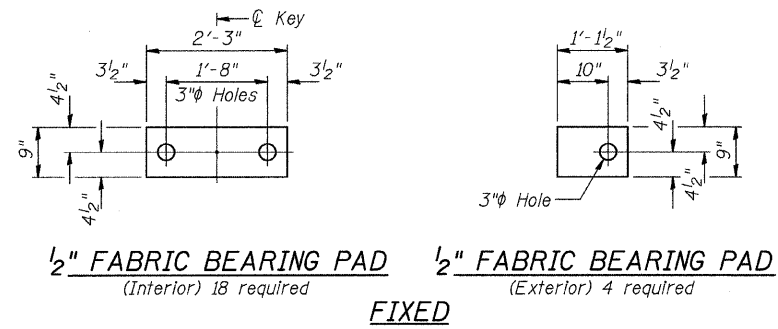
SUPERSTRUCTURE DETAILS - SPANS 1 & 3

MASON COUNTY

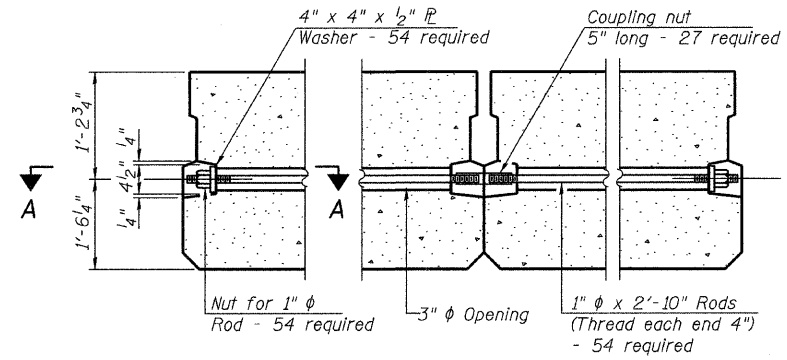
SECTION 07-00032-01-BR

C.H. 3 OVER QUIVER CREEK

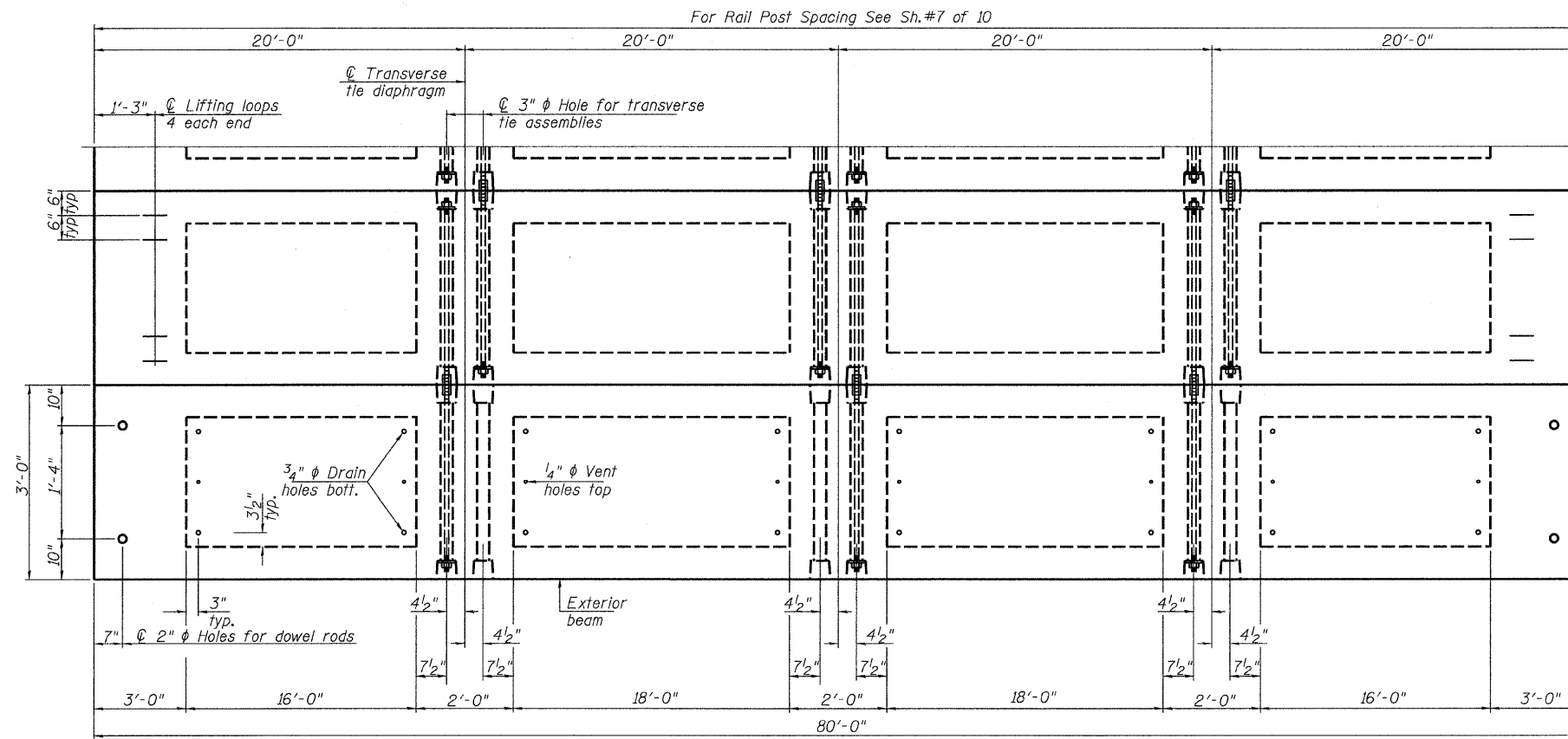
SHEET NO. 3 10 SHEETS	ROUTE NO. CH 3	SECTION 07-00032-01-BR	COUNTY MASON	TOTAL SHEETS 21	SHEET NO. 9
	S.N. 063-3011		CONTRACT NO. 93505		
	FED. ROAD DIST. NO. 7 ILLINOIS		FED. AID PROJECT BRS-0568(102)		



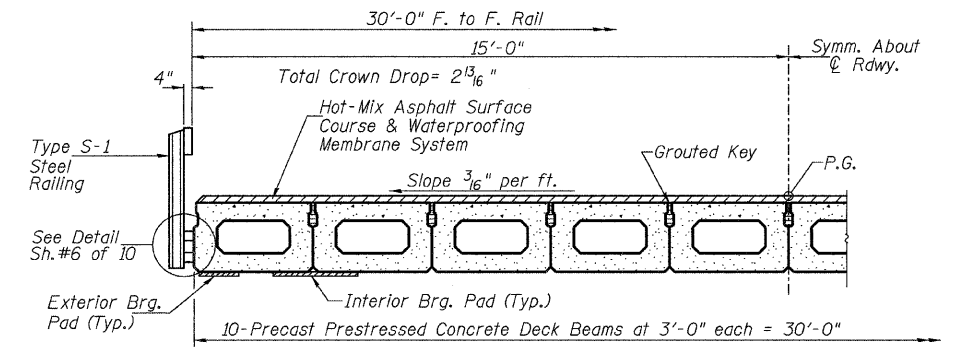
SECTION A-A



TYPICAL TRANSVERSE TIE ASSEMBLY



PLAN VIEW



HALF CROSS SECTION

BILL OF MATERIAL

ITEM	UNIT	QUANTITY
Precast Prestressed Concrete Deck Beams (33" Depth)	SQ FT	2,400

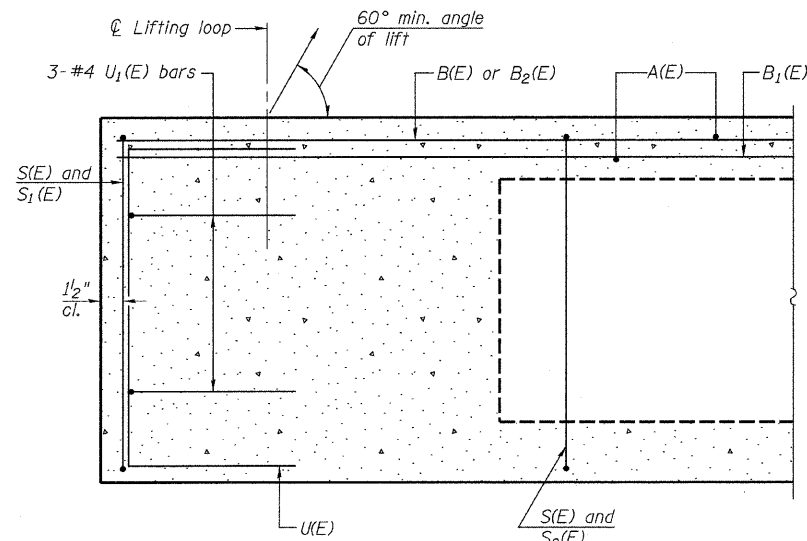
Note: Connect beams in pairs with the transverse tie configuration shown.

NOTES

Prestressing steel shall be uncoated high strength, low relaxation 7-wire strand, Grade 270. The nominal diameter shall be 1/2" and the nominal cross-sectional area shall be 0.153 sq. in. The 1" rods in the transverse tie assembly shall be tightened to a snug fit and the threads set. Pockets on exterior faces of bridge shall be filled with grout after transverse tie assembly is in place.
 Reinforcement bars shall conform to ASTM A 706, Grade 60. (See Special Provisions)
 Two 1/2" fabric adjusting shims of the dimensions of the exterior bearing pad shall be provided for each bearing pad location.
 A minimum 2 1/2" lifting pin shall be used to engage the lifting loops during handling.
 Corrosion Inhibitor, per Article 1020.05(b)(12) and 1021.06 of the Standard Specifications, shall be used in the concrete for precast prestressed concrete deck beams.
 Compressive strength of prestressed concrete, f'c, shall be 6000 psi.
 Compressive strength of prestressed concrete at release, f'ci, shall be 5000 psi.

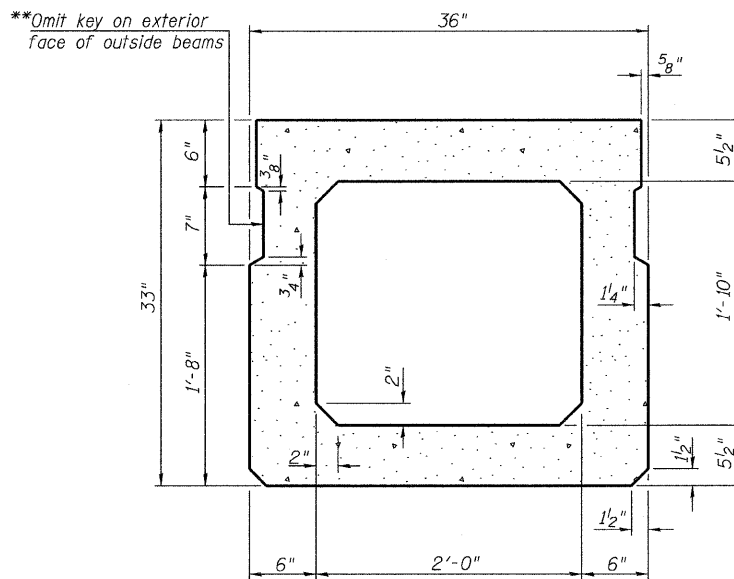
SUPERSTRUCTURE - SPAN 2
MASON COUNTY
SECTION 07-00032-01-BR
C.H. 3 OVER QUIVER CREEK

SHEET NO. 4	ROUTE NO.	SECTION	COUNTY	TOTAL SHEETS	SHEET NO.
	CH 3	07-00032-01-BR	MASON	21	10
10 SHEETS	S.N. 063-3011		CONTRACT NO. 93505		
FED. ROAD DIST. NO. 7		ILLINOIS	FED. AID PROJECT BRS-0568(102)		

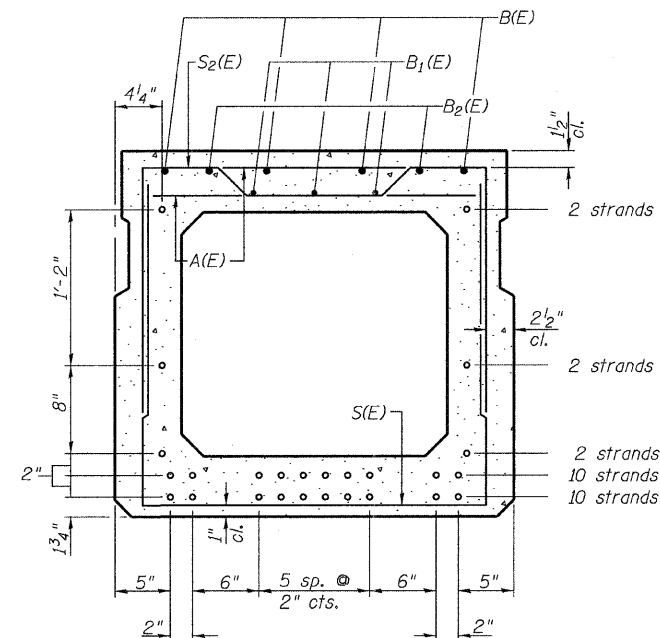


SECTION C-C

**Rail post anchor devices (Sheet 6 of 10) to be cast into exterior face of outside beams.



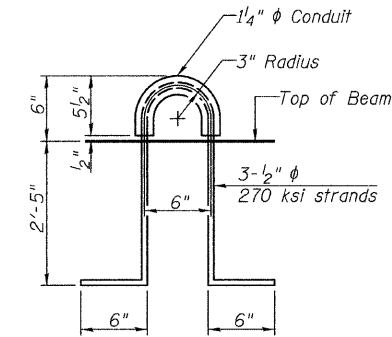
SECTION A-A
(Showing dimensions)



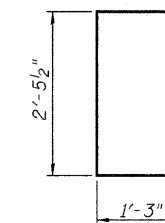
SECTION A-A

26-1/2" Strands Each Strand Stressed to 30,900 Lbs.
10-Strands 1 3/4" up, 10-Strands 3 3/4" up,
2-Strands 5 3/4" up, 2-Strands 1'-1 3/4" up, 2-Strands 2'-3 3/4" up

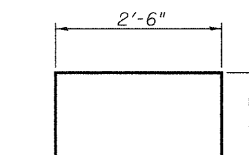
Note: Place the number of strands specified in each row symmetrically about the centerline of beam in the permissible strand locations shown.



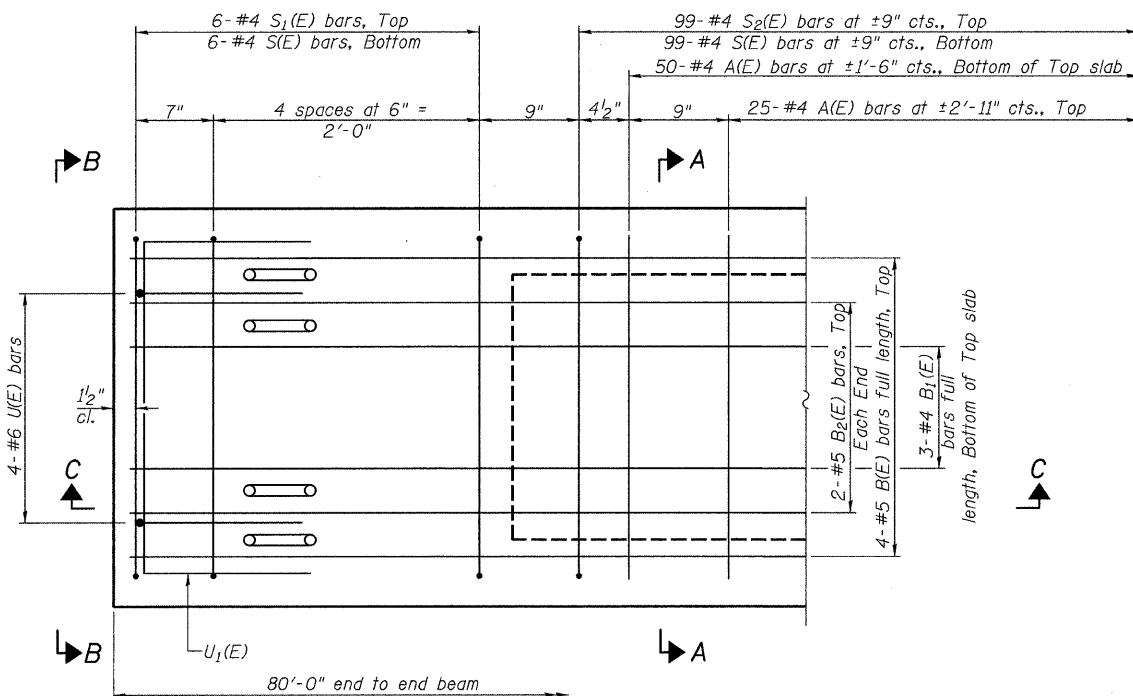
LIFTING LOOP DETAIL



BAR U(E)

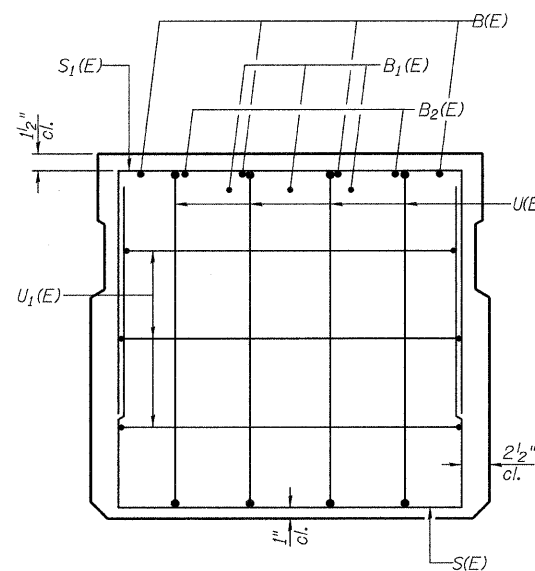


BAR U1(E)

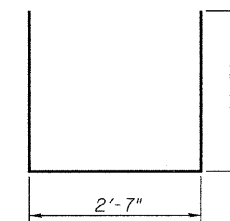


PLAN VIEW

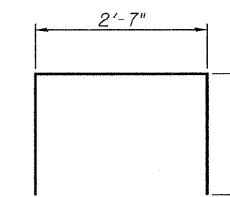
Note: Spacing of S(E) and S2(E) bars may be adjusted up to 4" in the immediate area of the transverse tie diaphragms to miss the block outs for the transverse ties.



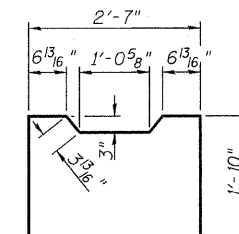
VIEW B-B



BAR S(E)



BAR S1(E)



BAR S2(E)

BAR LIST - ONE BEAM ONLY

(For information only)

Bar	No.	Size	Length	Shape
A(E)	75	#4	2'-7"	—
B(E)	4	#5	*79'-9"	—
B1(E)	3	#4	*79'-9"	—
B2(E)	4	#5	16'-3"	—
S(E)	111	#4	7'-5"	—
S1(E)	12	#4	6'-3"	—
S2(E)	99	#4	6'-6"	—
U(E)	8	#6	5'-0"	—
U1(E)	6	#4	5'-0"	—

* Total Length, Lap as necessary

Note: See sheet 4 of 10 for additional details and Bill of Material.

SUPERSTRUCTURE DETAILS - SPAN 2

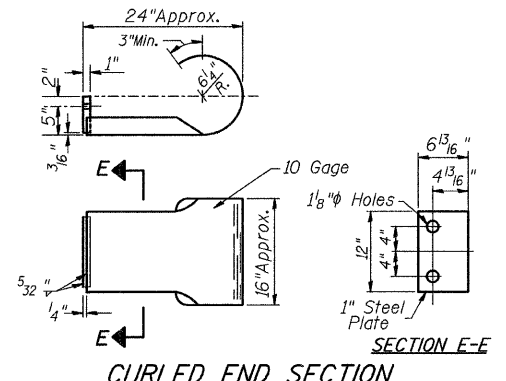
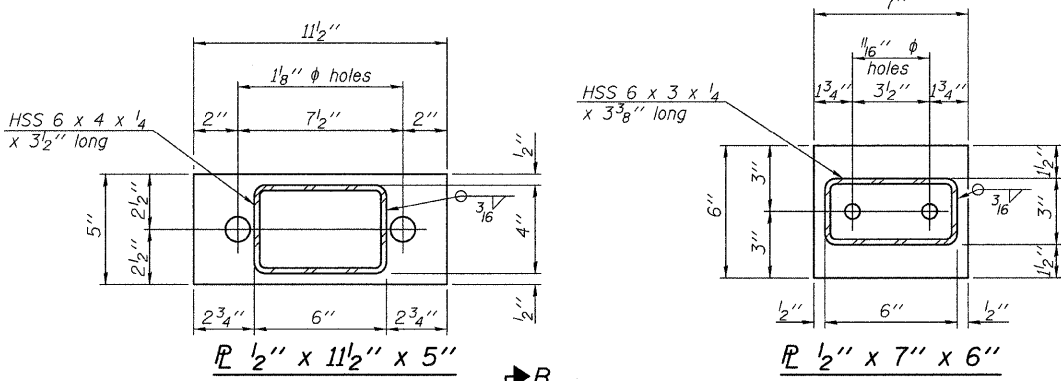
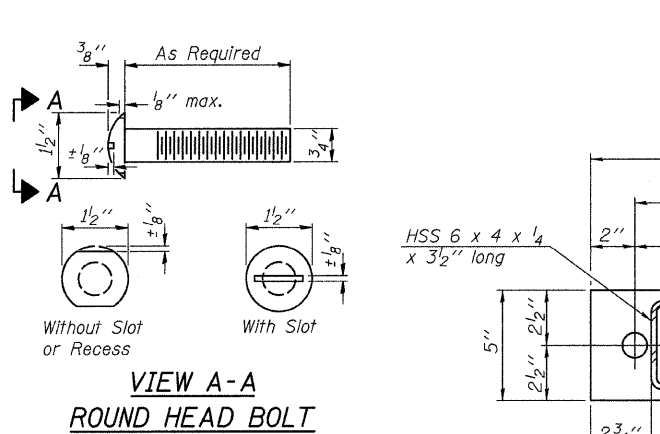
MASON COUNTY

SECTION 07-00032-01-BR

C.H. 3 OVER QUIVER CREEK

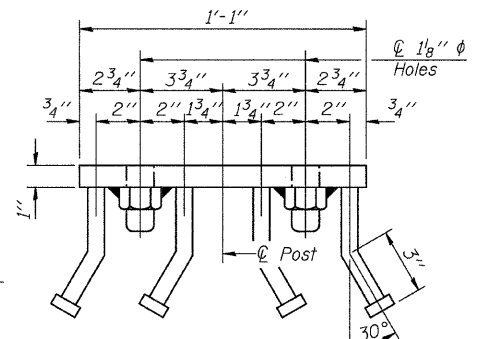
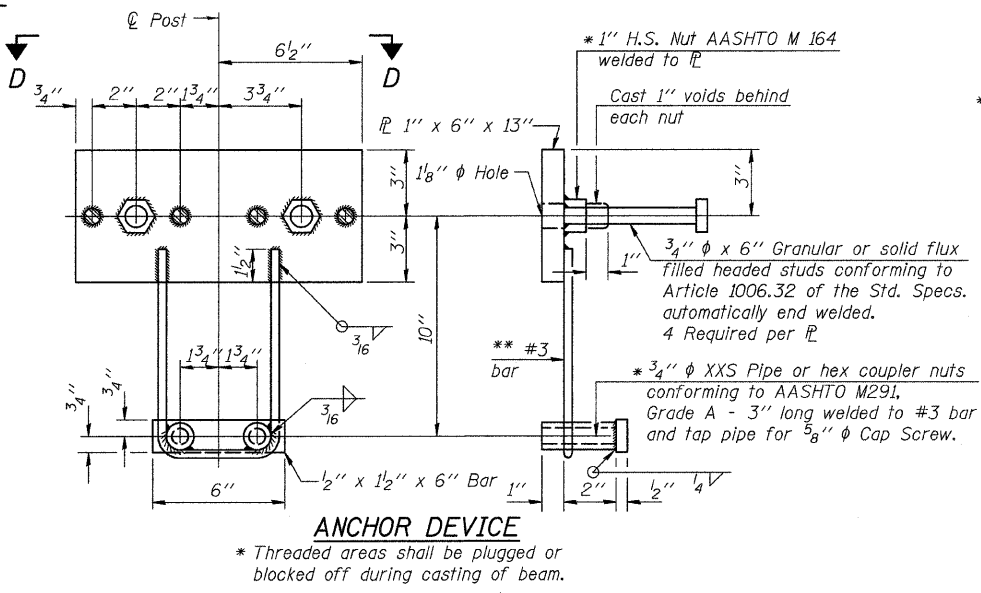
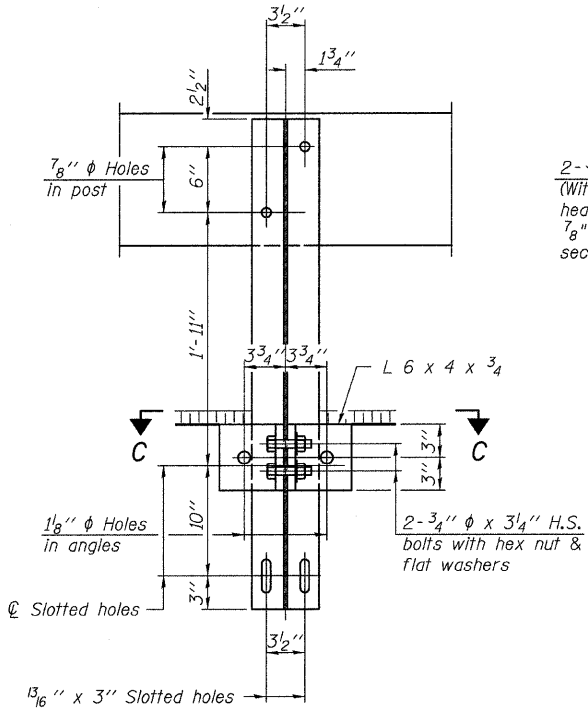
SHEET NO. 5 10 SHEETS	ROUTE NO.	SECTION	COUNTY	TOTAL SHEETS	SHEET NO.
	CH 3	07-00032-01-BR	MASON	21	11
S.N. 063-3011			CONTRACT NO. 93505		
FED. ROAD DIST. NO. 7 ILLINOIS			FED. AID PROJECT BRS-0568(102)		

FOR RAIL POST SPACING SEE SH.#7 OF 10

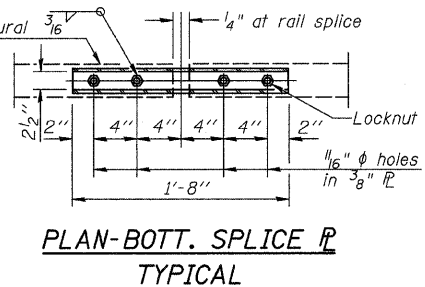
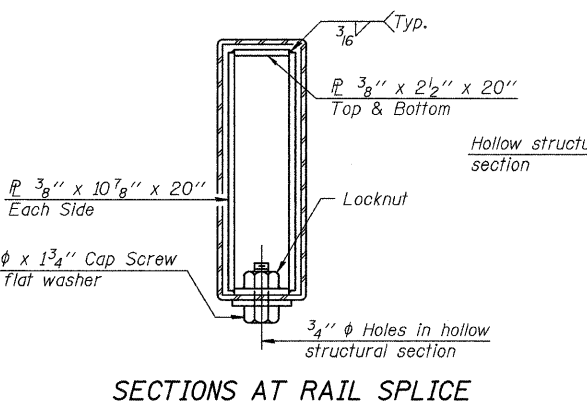
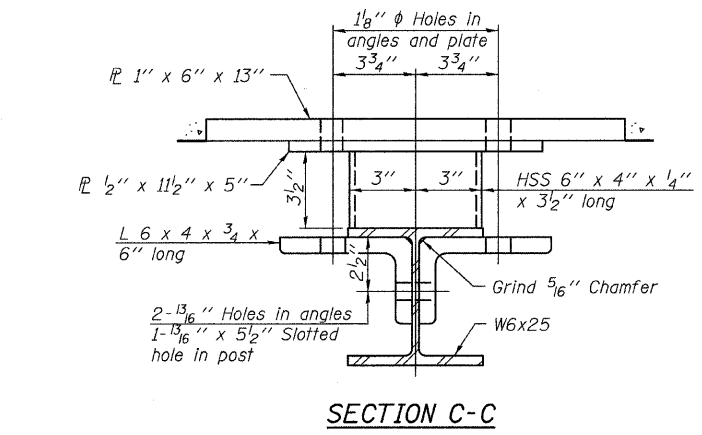


NOTES

All field drilled holes shall be coated with an approved zinc rich paint before erection. For multi-span bridges, sufficient 1/4" x 6" x 1'-2" galvanized steel shims shall be provided to align rail between adjacent spans. Cost included with Steel Railing, Type S-1. All steel rail elements shall be galvanized according to Article 509.05 of the Standard Specifications. *** The studs of the anchor devices shall be placed below the top reinforcement bars and the outermost longitudinal reinforcement bar shall be placed directly above the studs of the rail post anchor device.



** Whenever the lower insert assemblies interfere with strand locations, the #3 bars shall be cut and adjusted in order to allow raising or lowering of the lower inserts. Maximum adjustment not to exceed 1/2".

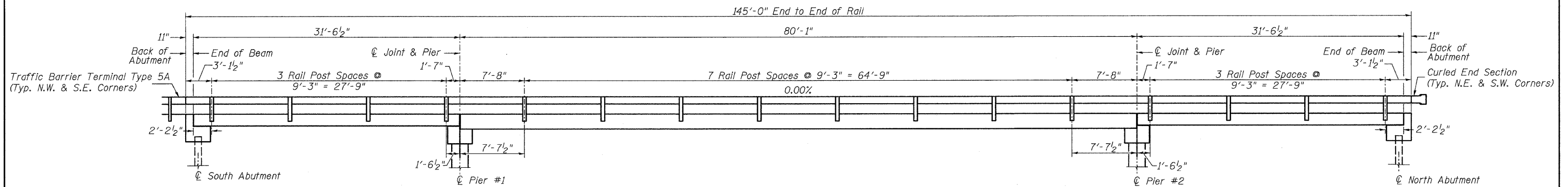


BILL OF MATERIAL

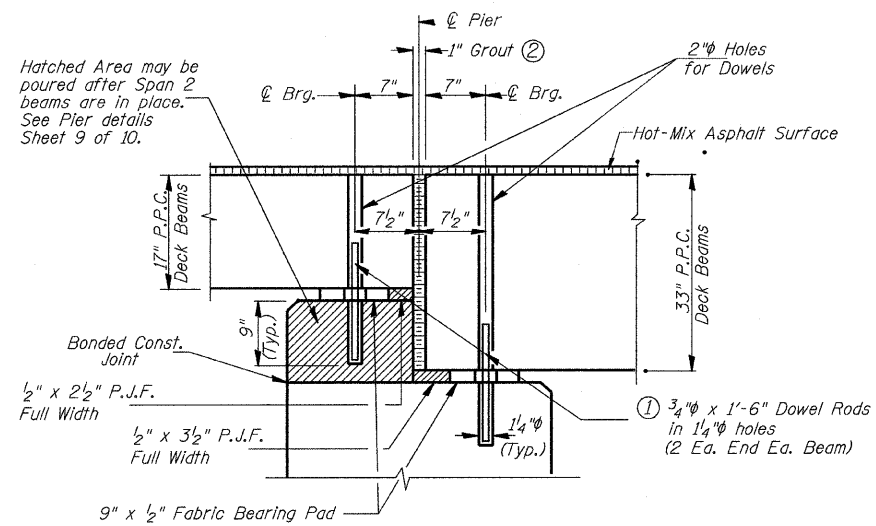
Item	Unit	Quantity
Steel Railing, Type S-1	FOOT	290

STEEL RAILING, TYPE S-1
MASON COUNTY
SECTION 07-00032-01-BR
C.H. 3 OVER QUIVER CREEK

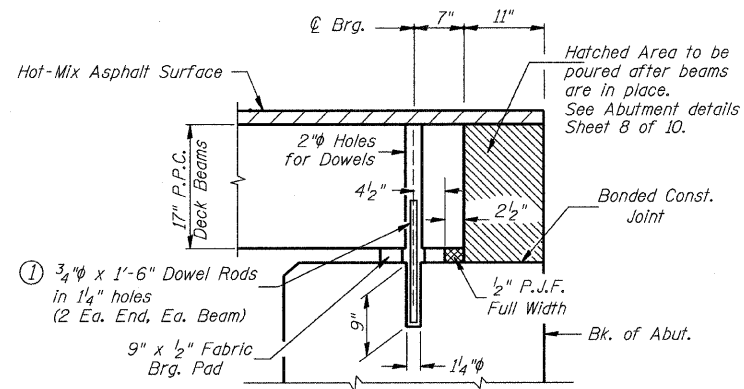
SHEET NO. 6	ROUTE NO.	SECTION	COUNTY	TOTAL SHEETS	SHEET NO.
	CH 3	07-00032-01-BR	MASON	21	12
	10 SHEETS	S.N. 063-3011	CONTRACT NO. 99505		
	FED. ROAD DIST. NO. 7	ILLINOIS	FED. AID PROJECT BRS-0568(102)		



RAIL POST SPACING

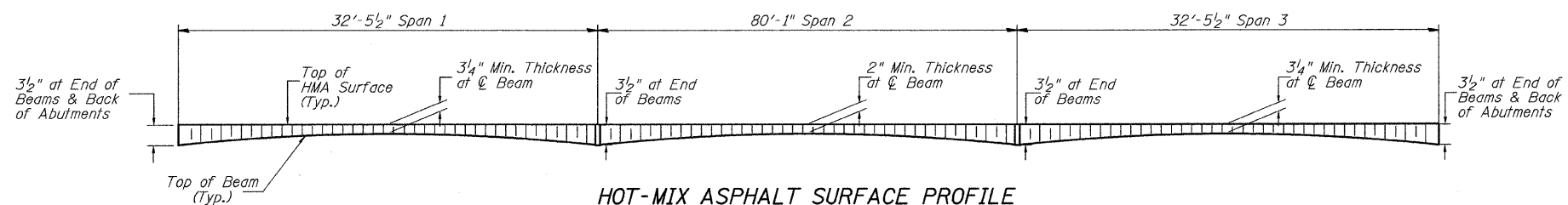


SECTION THRU PIERS



SECTION THRU ABUTMENTS

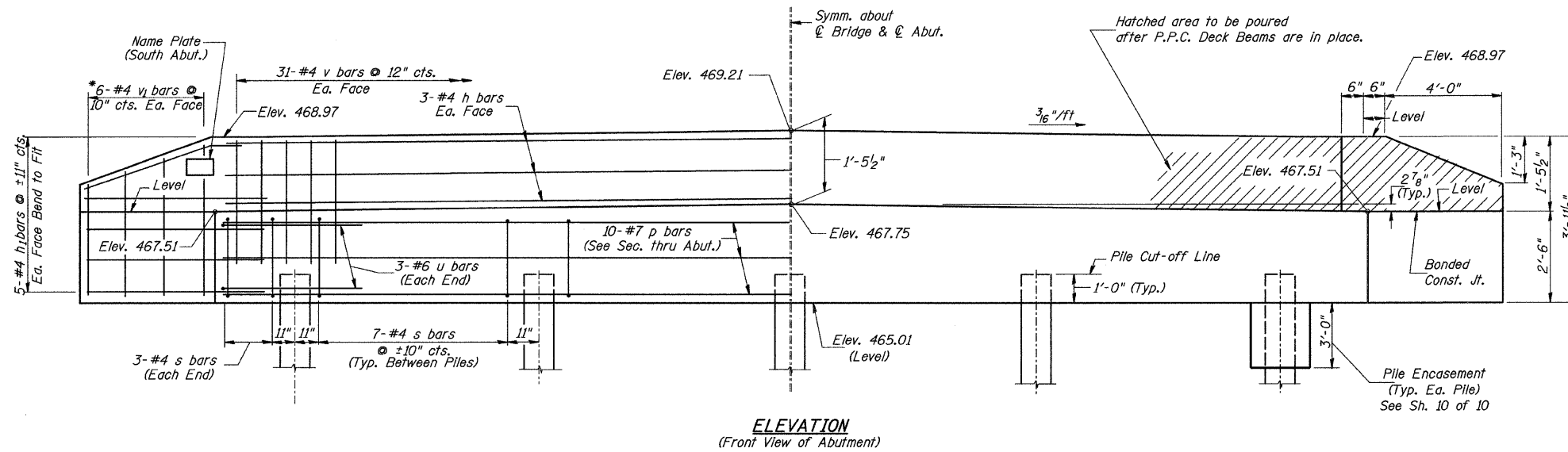
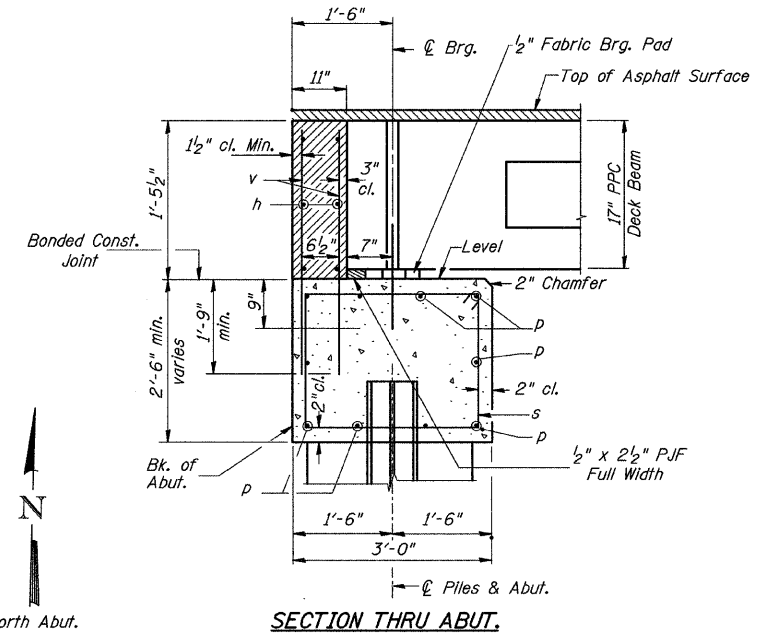
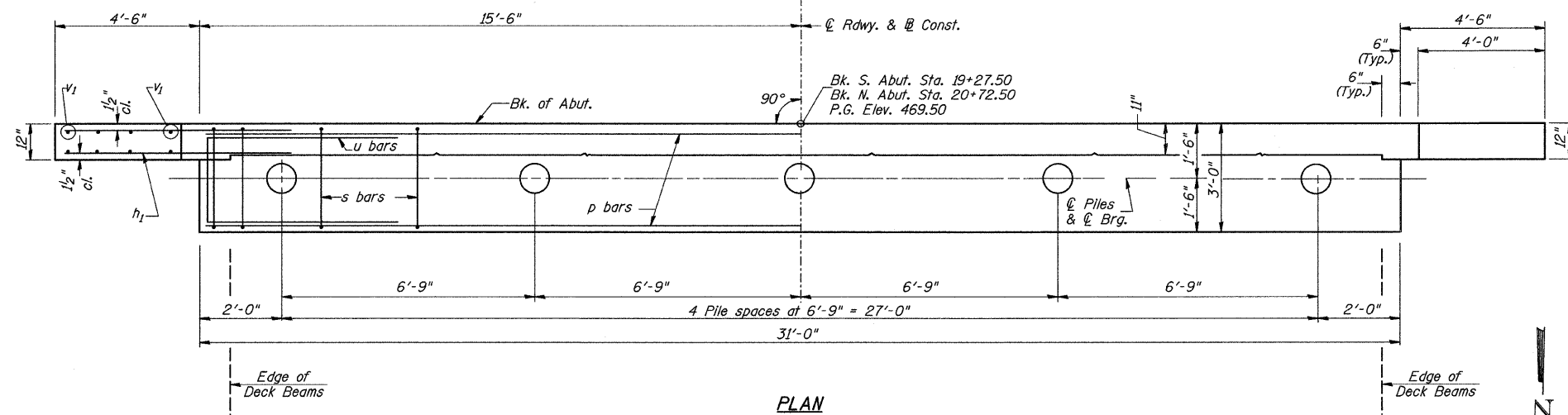
- ① Dowel Rods to be grouted after beams are in place and allowed to cure (Min. 24 hr.) prior to grouting the shear keys.
- ② 1" Joint shall be packed with a very dry mix of 2:1 sand and P.C. mortar. 1" Dimension may vary plus or minus to accommodate tolerance in beam lengths.



HOT-MIX ASPHALT SURFACE PROFILE
Includes Waterproofing Membrane System

**RAIL POST SPACING AND
SUPERSTRUCTURE DETAILS
MASON COUNTY
SECTION 07-00032-01-BR
C.H. 3 OVER QUIVER CREEK**

SHEET NO. 7 10 SHEETS	ROUTE NO.	SECTION	COUNTY	TOTAL SHEETS	SHEET NO.
	CH 3	07-00032-01-BR	MASON	21	13
	S.N. 063-3011		CONTRACT NO. 93505		
FED. ROAD DIST. NO. 7 ILLINOIS			FED. AID PROJECT BRS-0568(102)		



**TWO ABUTMENTS
BILL OF MATERIAL**

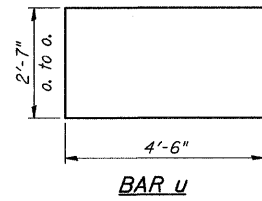
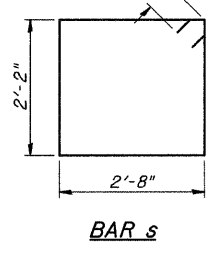
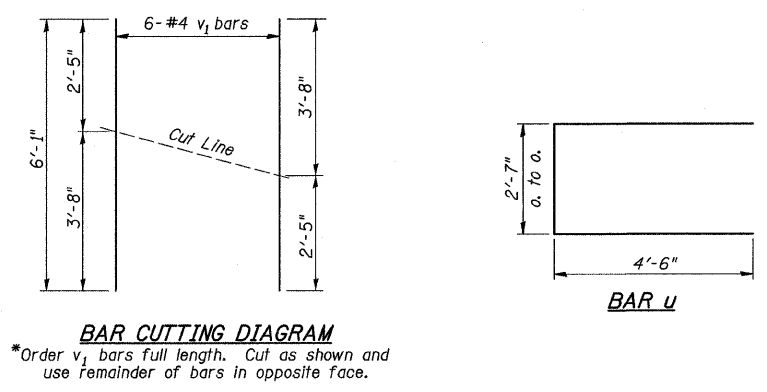
BAR	NO.	SIZE	LENGTH	SHAPE	
h	12	#4	30'-9"	—	
h ₁	40	#4	6'-6"	—	
p	20	#7	30'-9"	—	
s	68	#4	10'-5"	□	
u	12	#6	11'-7"	—	
v	124	#4	3'-2"	—	
v ₁	24	#4	6'-1"	—	
Concrete Structures				CU YD	23.1
Reinforcement Bars				POUND	2,720
Structure Excavation				CU YD	60
Name Plates				EACH	1
Furnishing Metal Shell Piles 12"x0.250"				FOOT	168
Driving Piles				FOOT	168
Test Pile Metal Shells				EACH	2
Concrete Encasement				CU YD	2.6

① See Special Provisions

DESIGN STRESSES
 $f'_c = 3,500$ p.s.i.
 $f_y = 60,000$ p.s.i.

- NOTES**
- The Backwall and the portion of the Wingwalls above the bonded construction joint shall be cast against the in-place beam.
 - Reinforcement bars shall conform to ASTM A706 Grade 60.

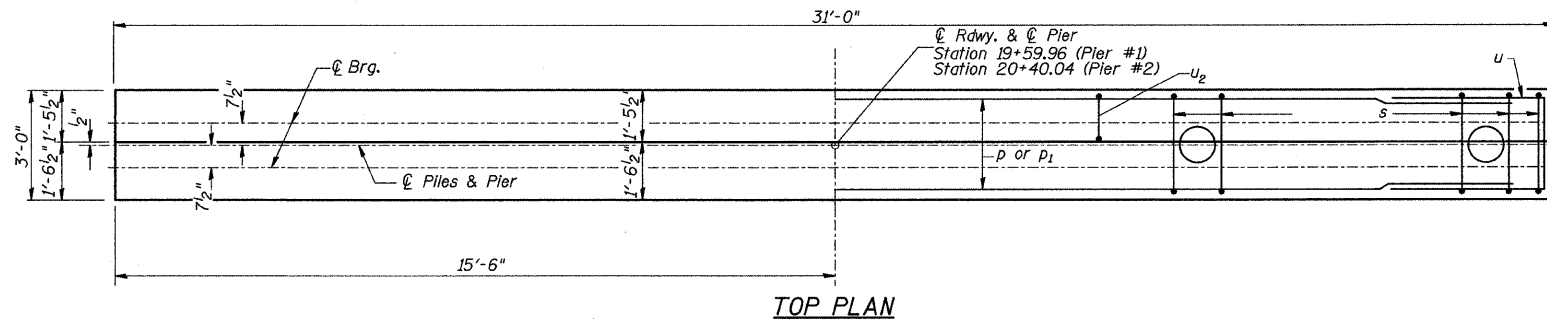
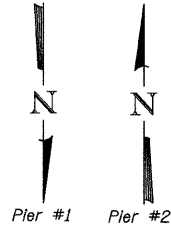
PILE DATA
 Type & Size: Metal Shells-12"x0.25" walls
 Nominal Required Bearing: 200 kips
 Factored Resistance Available: 100 kips
 Est. Length: 22' South Abutment
 20' North Abutment
 No. Req'd.: 10 (Includes 1 Test Pile at Each Abut.)



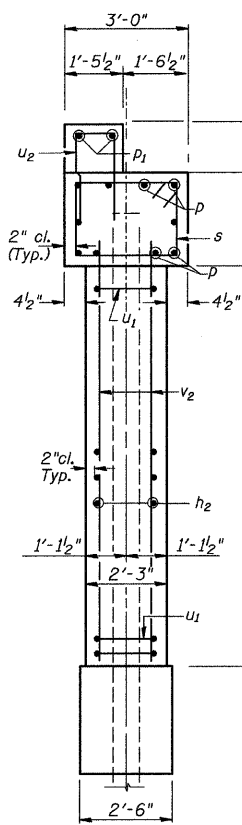
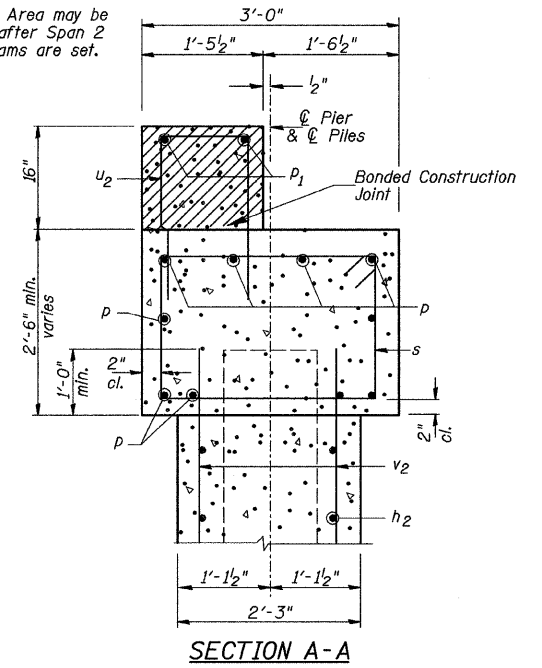
**ABUTMENTS
MASON COUNTY
SECTION 07-00032-01-BR
C.H. 3 OVER QUIVER CREEK**

SHEET NO. 8 10 SHEETS	ROUTE NO.	SECTION	COUNTY	TOTAL SHEETS	SHEET NO.
	CH 3	07-00032-01-BR	MASON	21	14
	S.N. 063-3011		CONTRACT NO. 93505		
FED. ROAD DIST. NO. 7 ILLINOIS			FED. AID PROJECT BRS-0568(102)		

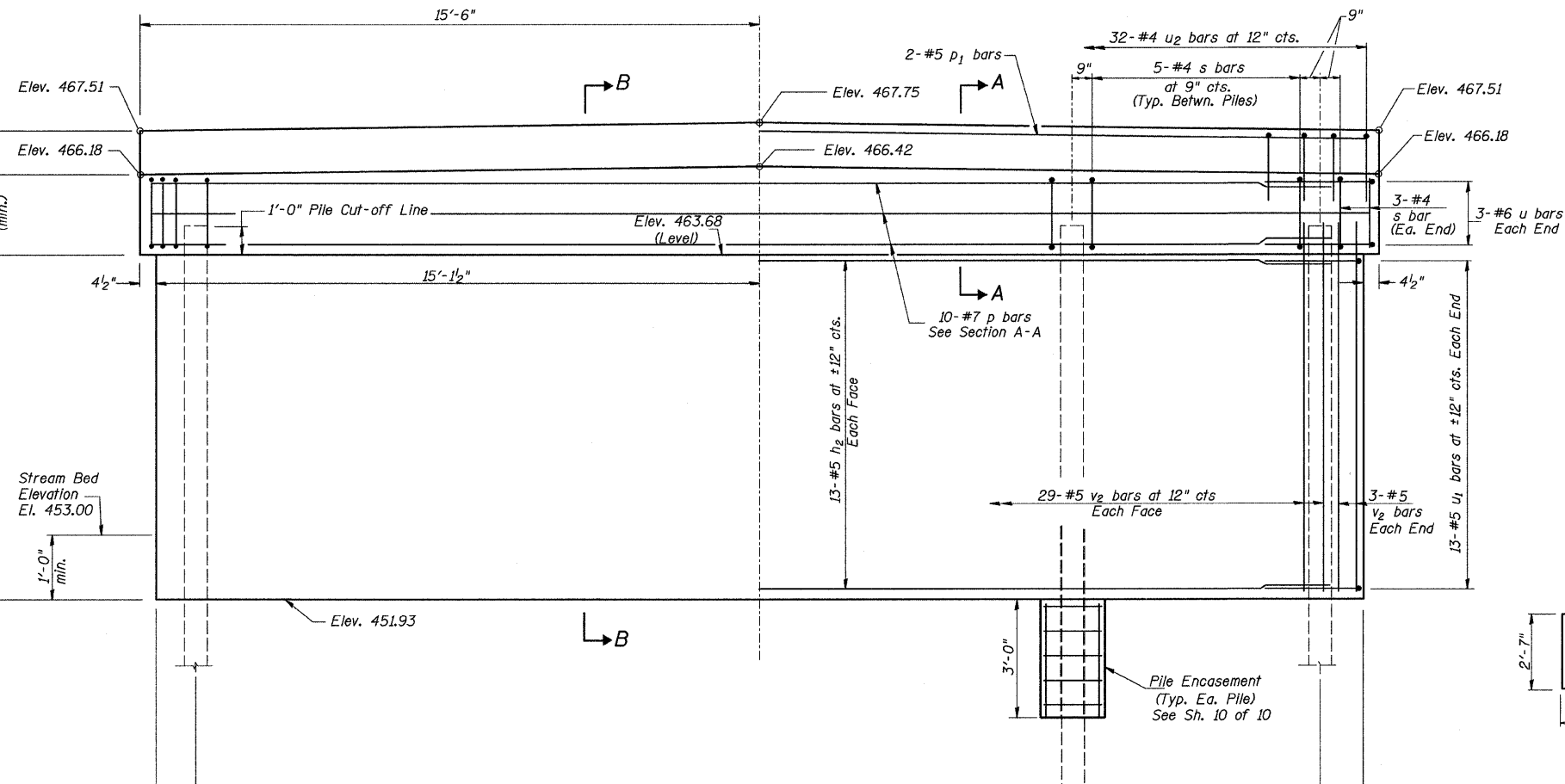
NOTES:
All edges shall have standard
3/4" chamfer.



Hatched Area may be
poured after Span 2
PPC Beams are set.

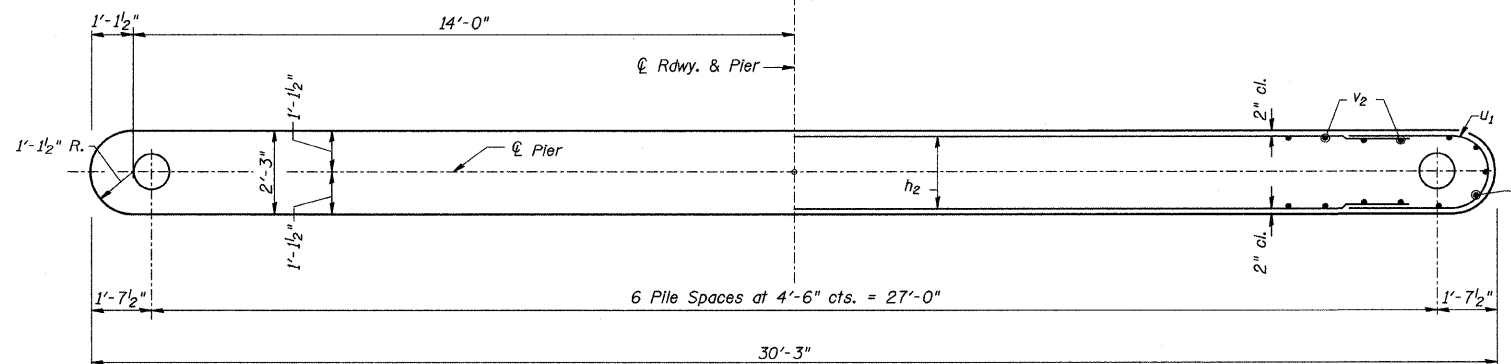


SECTION B-B



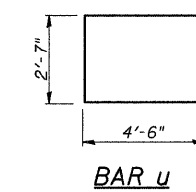
ELEVATION

(Looking South-Pier #1)
(Looking North-Pier #2)

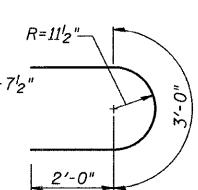


PILE DATA

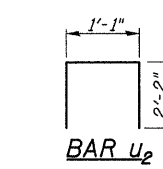
Type & Size: Metal Shells-14"x0.312" walls
w/ pile shoes
Nominal Required Bearing: 460 kips
Factored Resistance Available: 230 kips
Est. Length: 31' Pier #1
38' Pier #2
No. Req'd.: 14 (Includes 1 Test
Pile at Each Pier)



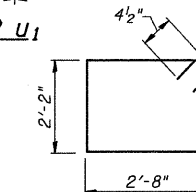
BAR U



BAR U1



BAR U2



BAR S

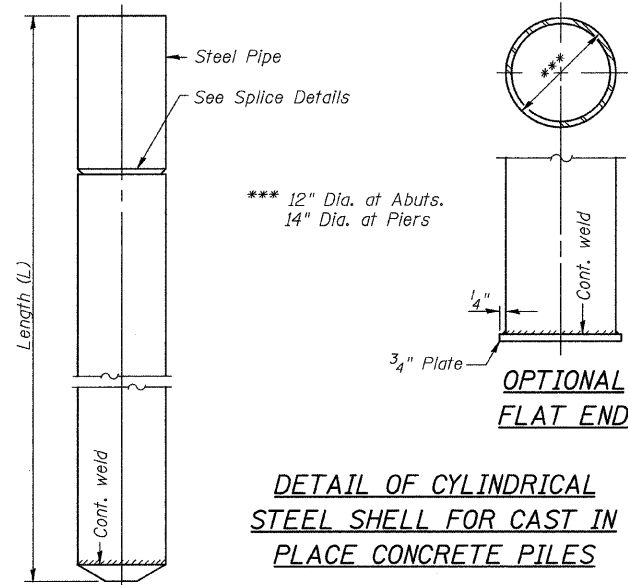
**TWO PIERS
BILL OF MATERIAL**

BAR	NO.	SIZE	LENGTH	SHAPE
h2	52	#5	27'-8"	—
p	20	#7	30'-9"	—
p1	4	#5	30'-9"	—
s	72	#4	10'-5"	□
u	12	#6	11'-7"	□
u1	52	#5	7'-0"	U
u2	64	#4	5'-5"	□
v2	128	#5	12'-7"	—
Concrete Structures			CU YD	73.7
Reinforcement Bars			POUND	5,890
Structure Excavation			CU YD	15
Furnishing Metal Shell Piles 14"x0.132"			FOOT	414
Driving Piles			FOOT	414
Test Pile Metal Shells			EACH	2
Pile Shoes			EACH	14
Concrete Encasement			CU YD	6.0
Underwater Structure Excavation Protection, Location 1			EACH	1
Underwater Structure Excavation Protection, Location 2			EACH	1

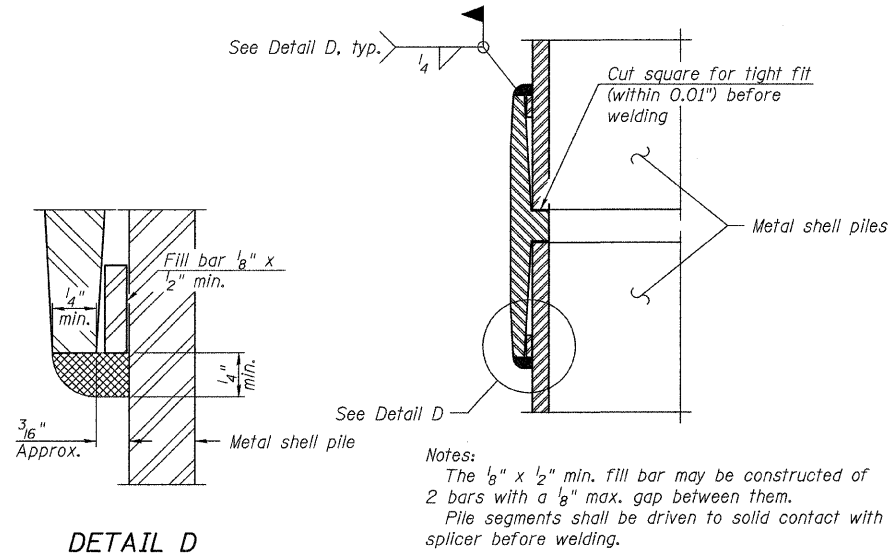
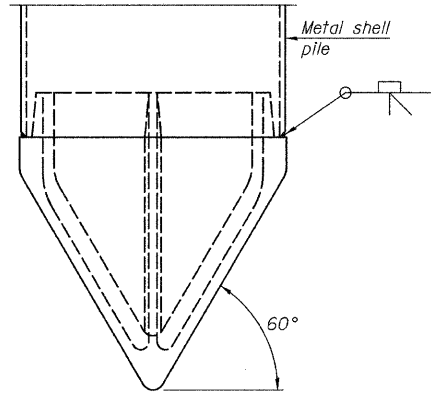
PIERS
MASON COUNTY
SECTION 07-00032-01-BR
C.H. 3 OVER QUIVER CREEK

SHEET NO. 9 10 SHEETS	ROUTE NO. CH 3	SECTION 07-00032-01-BR	COUNTY MASON	TOTAL SHEETS 21	SHEET NO. 15
	S.N. 063-3011		CONTRACT NO. 93505		
FED. ROAD DIST. NO. 7 ILLINOIS			FED. AID PROJECT BRS-0568(102)		

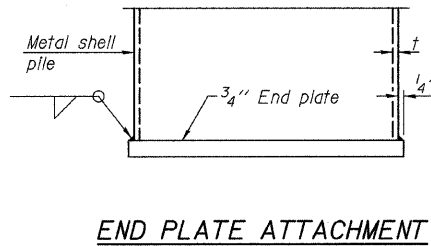
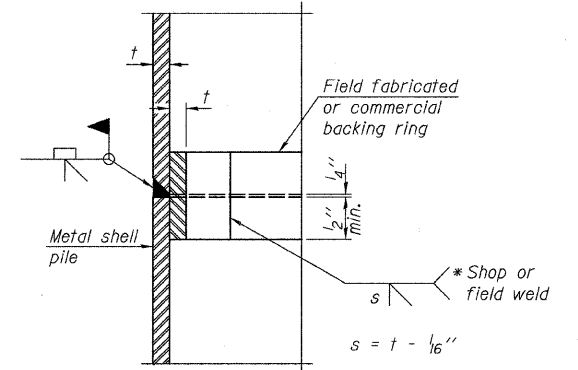
Notes: Driving and bearing ends of pipe shall be cut square. The thickness of the shells shall be 0.25 inches for 12" piles and 0.312 inches for 14" piles with a tolerance of 5%. The shells shall be according to Article 1006.05(a) of the Standard Specifications, and shall be ASTM A252 Grade 3.



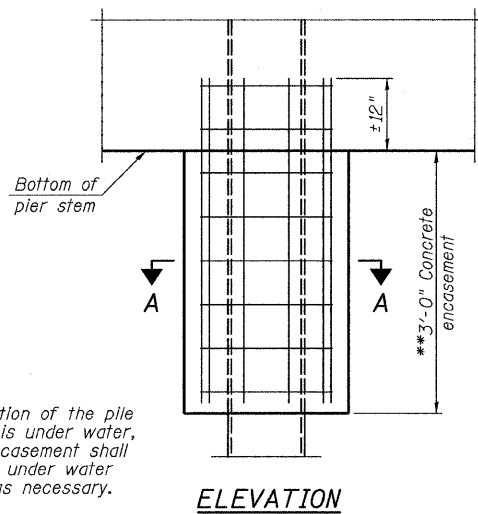
METAL SHELL PILE SHOE ATTACHMENT
(See Note E)



COMPLETE PENETRATION WELD SPLICE
* Field fabricated backing ring may be made from pile shell by removing segment to allow reducing circumference and vertically rejoin with partial joint penetration weld.

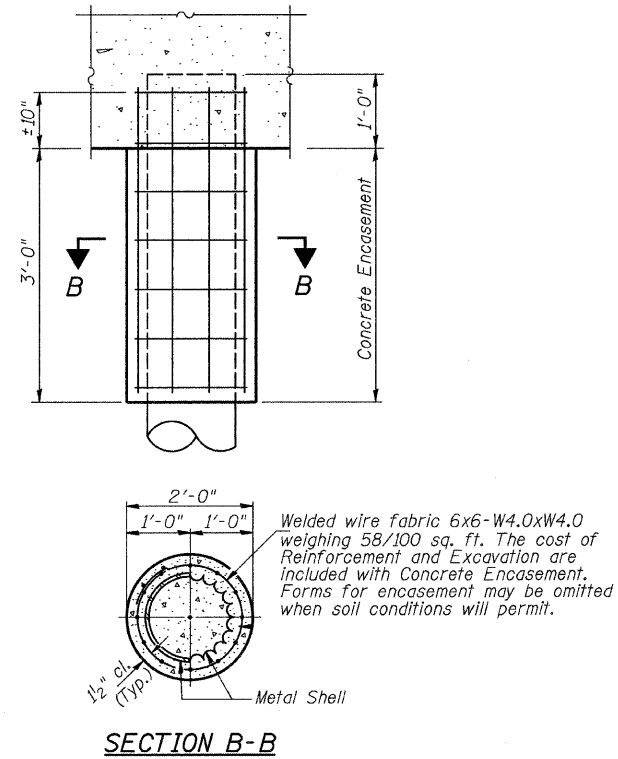
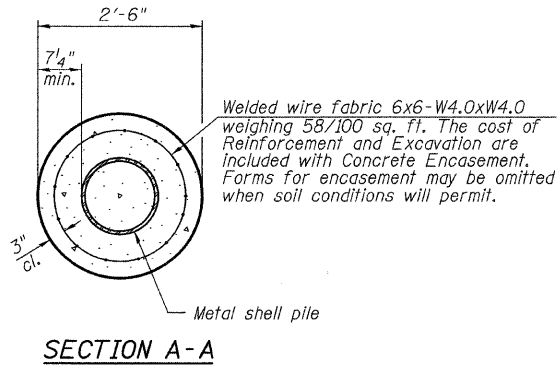


Note E:
When called for on the plans, the Contractor shall furnish metal shell pile shoes consisting of a single piece conical pile point as shown. The pile shoes shall be cast in one piece steel according to either ASTM A 148 Grade 90-60 or AASHTO M 103 Grade 65-35 and shall provide full bearing over the full circumference of the metal shell pile. The pile shoe shall have tapered leads to assure proper alignment and fitting and shall be secured to the pile with a circumferential weld.



** If a portion of the pile encasement is under water, Concrete Encasement shall be trembled under water into forms as necessary.

DETAIL OF PROTECTION FOR METAL SHELLS AT PIERS



DETAIL OF REINFORCEMENT FOR METAL SHELLS AT ABUTMENTS

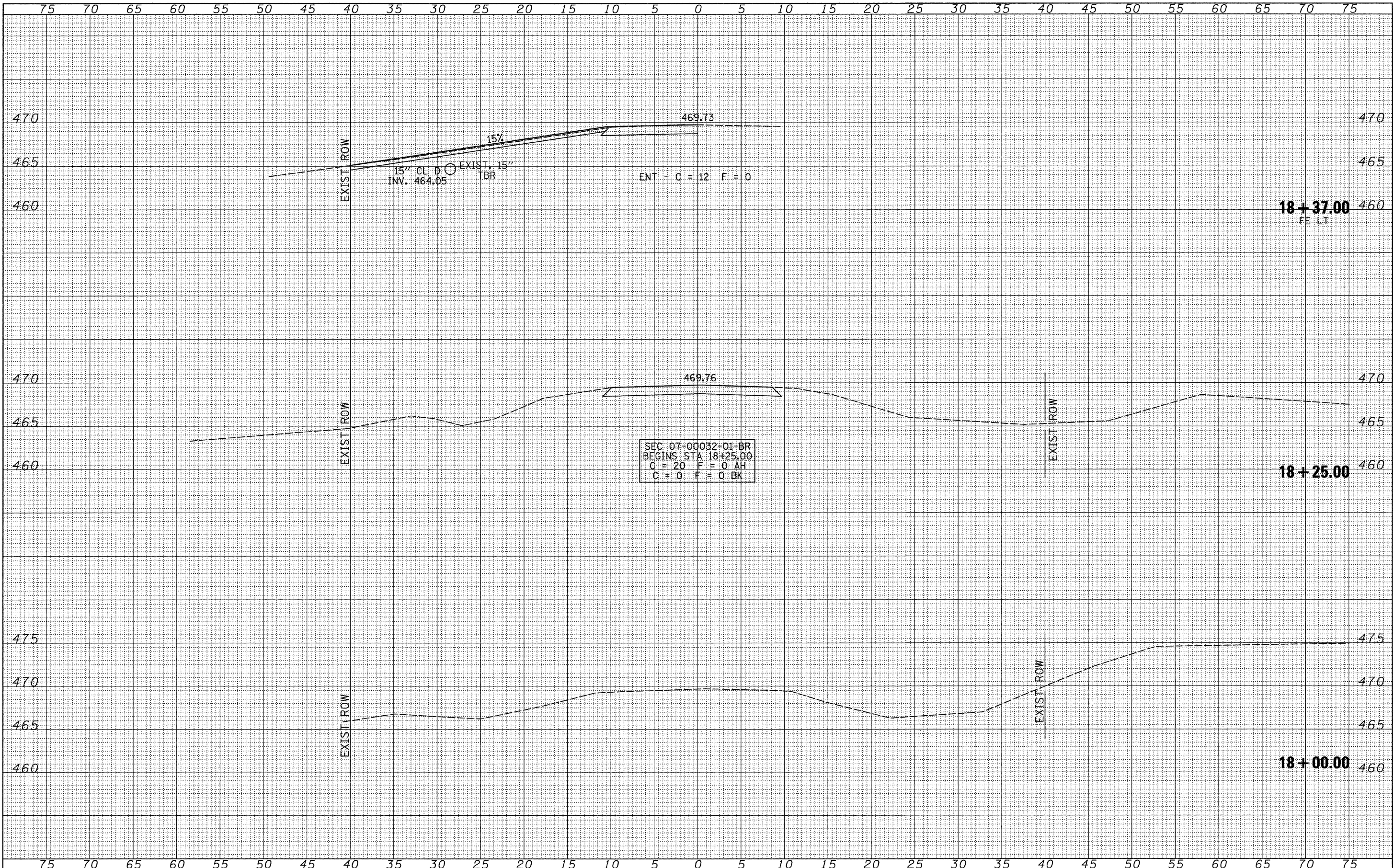
The cost of Reinforcement is included with Furnishing Metal Shell Piles 12"x0.250".

METAL SHELL PILE DETAILS
MASON COUNTY
SECTION 07-00032-01-BR
C.H. 3 OVER QUIVER CREEK

SHEET NO. 10	ROUTE NO.	SECTION	COUNTY	TOTAL SHEETS	SHEET NO.
	CH 3	07-00032-01-BR	MASON	21	16
10 SHEETS	S.N. 063-3011		CONTRACT NO. 93505		
	FED. ROAD DIST. NO. 7 ILLINOIS		FED. AID PROJECT BRS-0568(102)		

DATE	BY
FINAL SURVEY	SURVEYED
NOTE BOOK	PLOTTED
NO.	TEMPLATE
	AREAS
	CHECKED

DATE	BY
ORIGINAL SURVEY	SURVEYED
NOTE BOOK	PLOTTED
NO.	TEMPLATE
	AREAS
	CHECKED



SEC 07-00032-01-BR
 BEGINS STA 18+25.00
 C = 20 F = 0 AH
 C = 0 F = 0 BK

FILE NAME = V:\Bridg\2618 Mason\2618xheets.dgn

USER NAME = jwhite	DESIGNED -	REVISED -
PLOT SCALE = 5.0000' / IN.	DRAWN -	REVISED -
PLOT DATE = 10/5/2009	CHECKED -	REVISED -
	DATE -	REVISED -

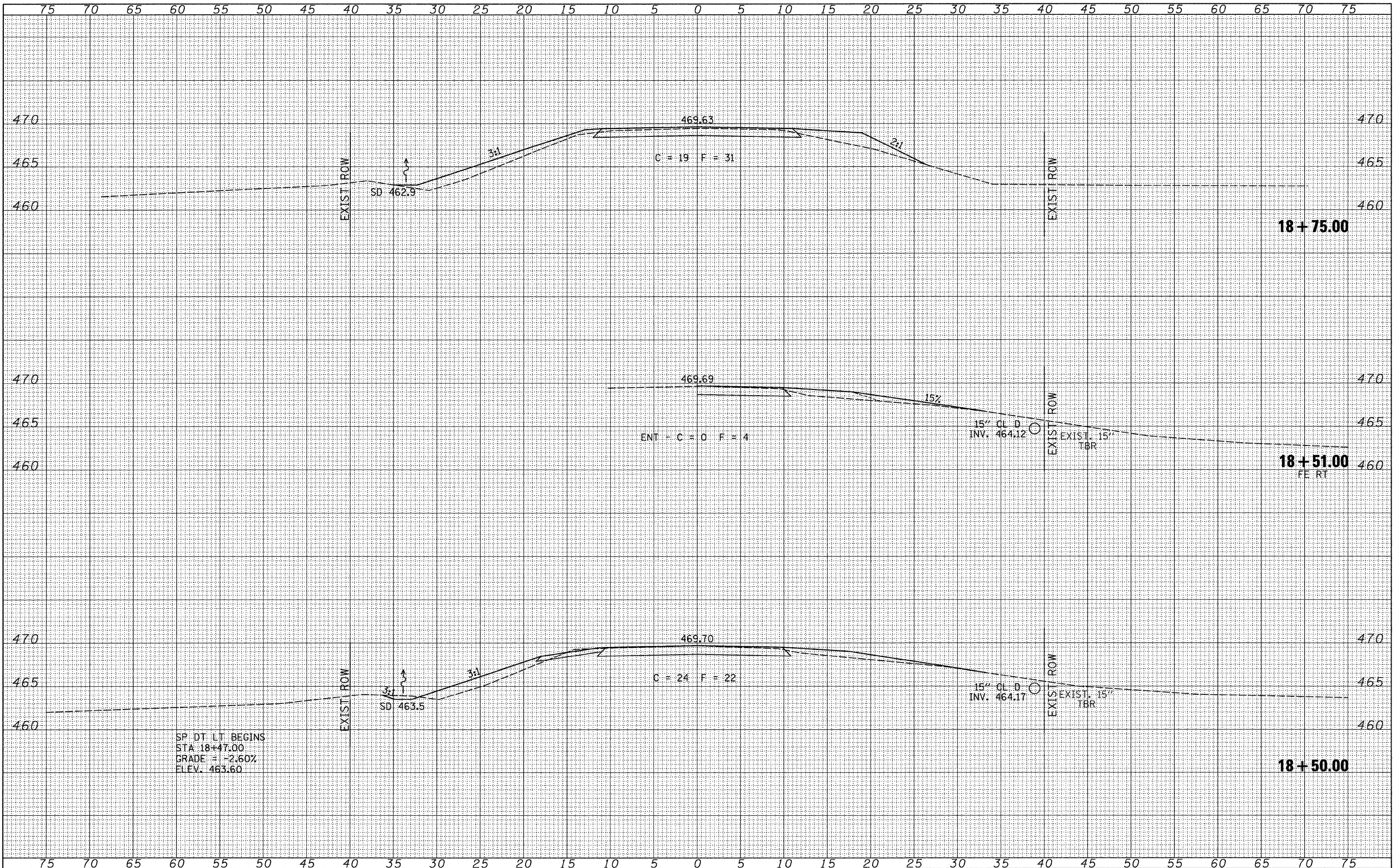
**MASON COUNTY
 COUNTY HIGHWAY 3
 OVER QUIVER CREEK**

CROSS SECTIONS	
SCALE: 1"=5'	SHEET NO. 1 OF 5 SHEETS
STA. 18+00.00	TO STA. 18+37.00

F.A.S. RTE.	SECTION	COUNTY	TOTAL SHEETS	SHEET NO.
568	07-00032-01-BR	MASON	21	17
CONTRACT NO. 93505				
FED. ROAD DIST. NO. 7 ILLINOIS FED. AID PROJECT BRS-0568102				

DATE	
BY	
FINAL SURVEY	SURVEYED
NOTE BOOK	PLOTTED
NO.	TEMPLATE
	AREAS CHECKED
	AREAS CHECKED

DATE	
BY	
ORIGINAL SURVEY	SURVEYED
NOTE BOOK	PLOTTED
NO.	TEMPLATE
	AREAS CHECKED
	AREAS CHECKED



FILE NAME = W:\Bridges\2618 Mason\2618xsheets.dgn

USER NAME = jwhite
 PLOT SCALE = 5.0000' / IN.
 PLOT DATE = 10/5/2009

DESIGNED -	REVISED -
DRAWN -	REVISED -
CHECKED -	REVISED -
DATE -	REVISED -

**MASON COUNTY
 COUNTY HIGHWAY 3
 OVER QUIVER CREEK**

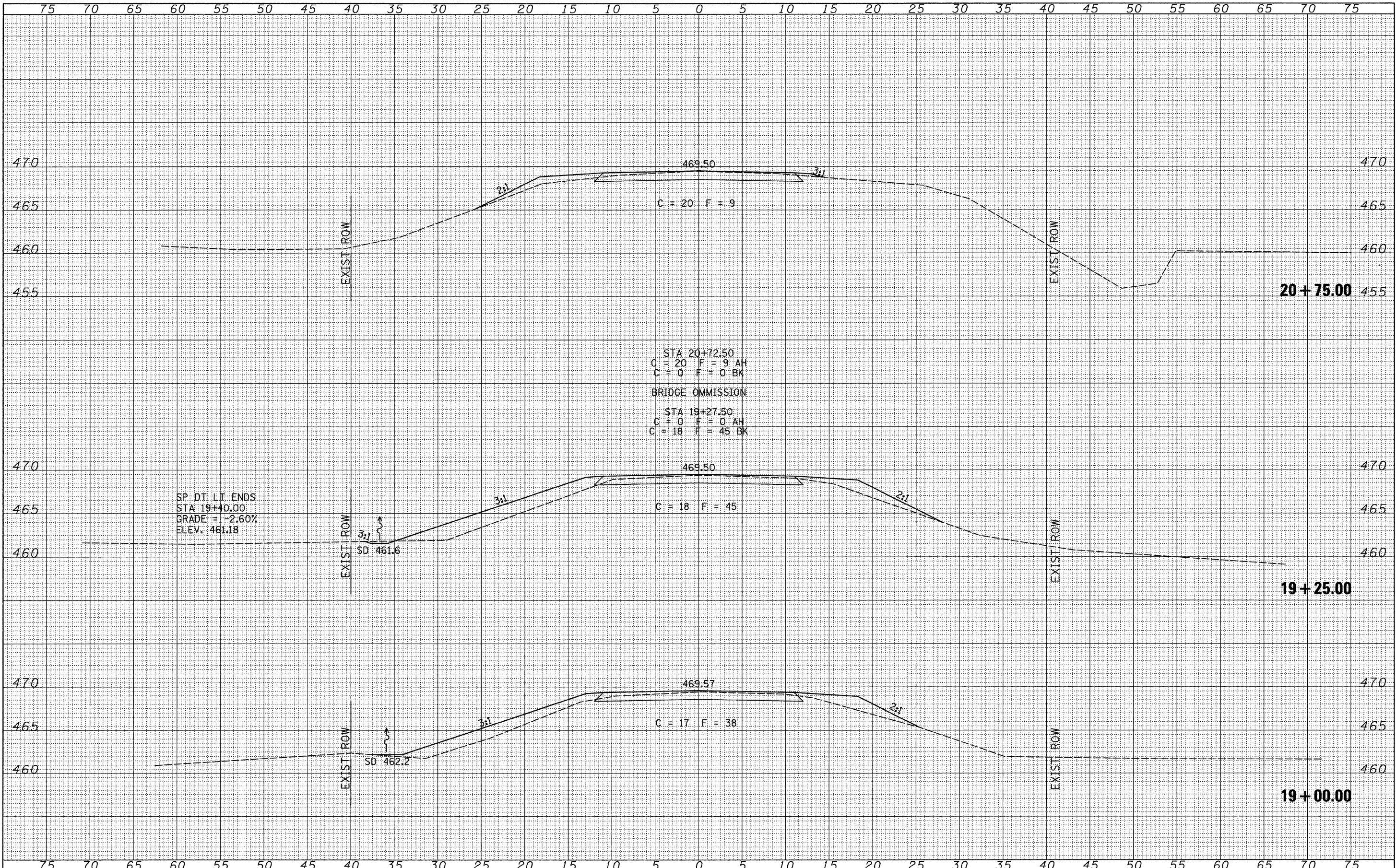
CROSS SECTIONS

SCALE: 1"=5' SHEET NO. 2 OF 5 SHEETS STA. 18+50.00 TO STA. 18+75.00

F.A.S. RTE.	SECTION	COUNTY	TOTAL SHEETS	SHEET NO.
568	07-00032-01-BR	MASON	21	18
CONTRACT NO. 93505				
FED. ROAD DIST. NO. 7 [ILLINOIS] FED. AID PROJECT BRS-0568102				

FINAL SURVEY	SURVEYED	DATE
NOTE BOOK	PLOTTED	BY
NO.	TEMPLATE	
	AREAS CHECKED	
	AREAS CHECKED	

ORIGINAL SURVEY	SURVEYED	DATE
NOTE BOOK	PLOTTED	BY
NO.	TEMPLATE	
	AREAS CHECKED	
	AREAS CHECKED	



FILE NAME = V:\Brdge\2618 Mason\2618xshets.dgn

USER NAME = jwhite	DESIGNED -	REVISED -
	DRAWN -	REVISED -
PLOT SCALE = 5.0000' / IN.	CHECKED -	REVISED -
PLOT DATE = 10/5/2009	DATE -	REVISED -

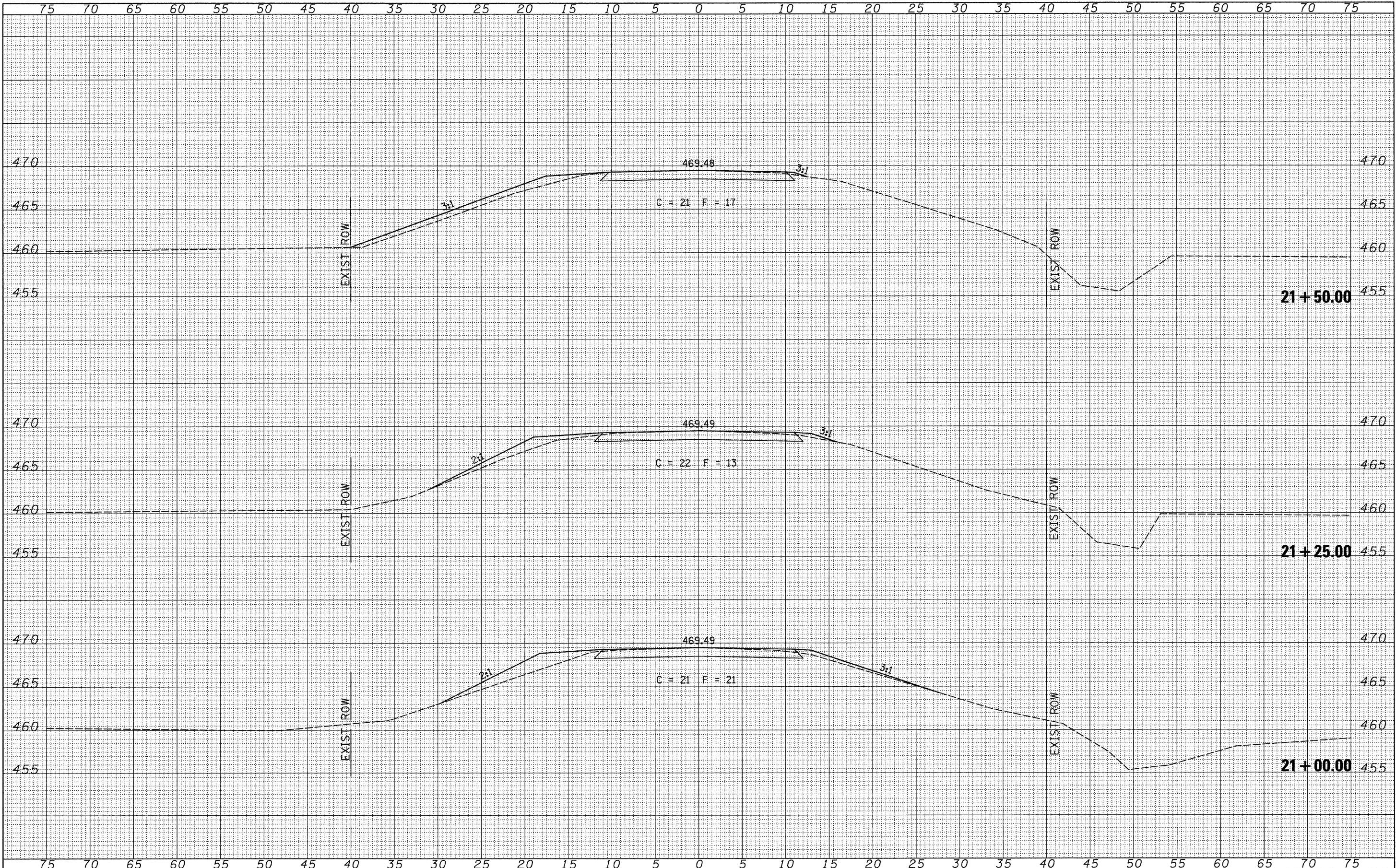
**MASON COUNTY
COUNTY HIGHWAY 3
OVER QUIVER CREEK**

CROSS SECTIONS			
SCALE: 1"=5'	SHEET NO. 3	OF 5 SHEETS	STA. 19+00.00 TO STA. 20+75.00

F.A.S. RTE. 568	SECTION 07-00032-01-BR	COUNTY MASON	TOTAL SHEETS 21	SHEET NO. 19
FED. ROAD DIST. NO. 7 ILLINOIS			CONTRACT NO. 93505	
FED. AID PROJECT BRS-0568102				

DATE	
BY	
FINAL SURVEY	SURVEYED
NOTE BOOK NO.	PLOTTED
	TEMPLATE
	AREAS CHECKED
	AREAS CHECKED

DATE	
BY	
ORIGINAL SURVEY	SURVEYED
NOTE BOOK NO.	PLOTTED
	TEMPLATE
	AREAS CHECKED
	AREAS CHECKED



FILE NAME = V:\B-rdgs\2618 Mason\2618xsheets.dgn
 USER NAME = jwhite
 PLOT SCALE = 5.0000' / IN.
 PLOT DATE = 10/5/2009

DESIGNED -	REVISED -
DRAWN -	REVISED -
CHECKED -	REVISED -
DATE -	REVISED -

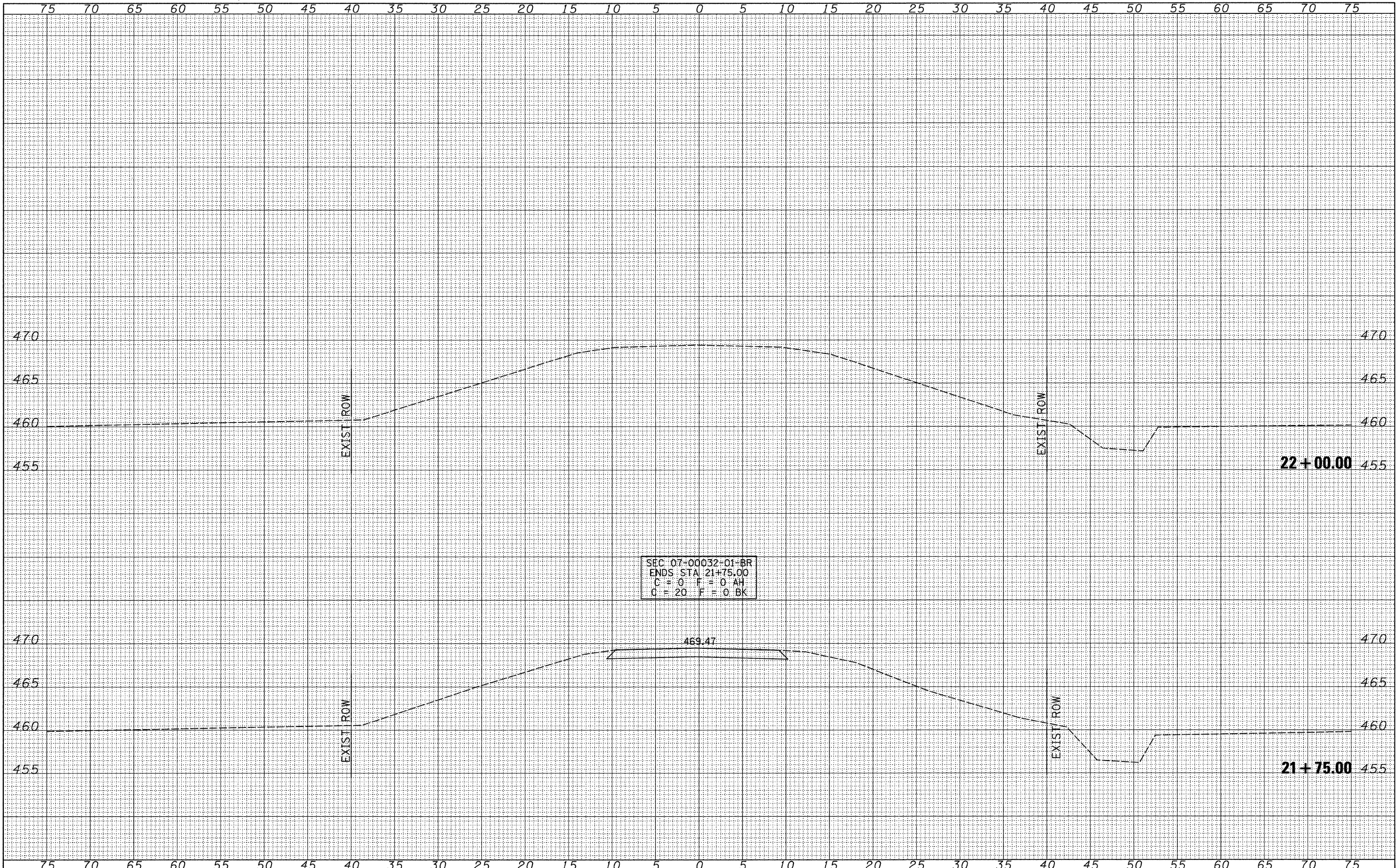
**MASON COUNTY
 COUNTY HIGHWAY 3
 OVER QUIVER CREEK**

CROSS SECTIONS
 SCALE: 1"=5' SHEET NO. 4 OF 5 SHEETS STA. 21+00.00 TO STA. 21+50.00

F.A.S. RTE. 568	SECTION 07-00032-01-BR	COUNTY MASON	TOTAL SHEETS 21	SHEET NO. 20
CONTRACT NO. 93505				
FED. ROAD DIST. NO. 7 ILLINOIS FED. AID PROJECT BR5-0568102				

FINAL SURVEY	SURVEYED	DATE
NOTE BOOK NO.	PLOTTED	BY
	TEMPLATE	
	AREAS CHECKED	

ORIGINAL SURVEY	SURVEYED	DATE
NOTE BOOK NO.	PLOTTED	BY
	TEMPLATE	
	AREAS CHECKED	



SEC. 07-00032-01-BR
 ENDS STA. 21+75.00
 C = 0 F = 0 AH
 C = 20 F = 0 BK

FILE NAME =
 V:\Bridges\2618 Mason\2618xshhets.dgn

USER NAME = jwhite	DESIGNED -	REVISED -
	DRAWN -	REVISED -
PLOT SCALE = 5.0000' / IN.	CHECKED -	REVISED -
PLOT DATE = 10/5/2009	DATE -	REVISED -

**MASON COUNTY
 COUNTY HIGHWAY 3
 OVER QUIVER CREEK**

CROSS SECTIONS			
SCALE: 1"=5'	SHEET NO. 5 OF 5 SHEETS	STA. 21+75.00 TO STA. 22+00.00	

F.A.S. RTE. 568	SECTION 07-00032-01-BR	COUNTY MASON	TOTAL SHEETS 21	SHEET NO. 21
FED. ROAD DIST. NO. 7 [ILLINOIS] FED. AID PROJECT BRS-0568102				CONTRACT NO. 93505