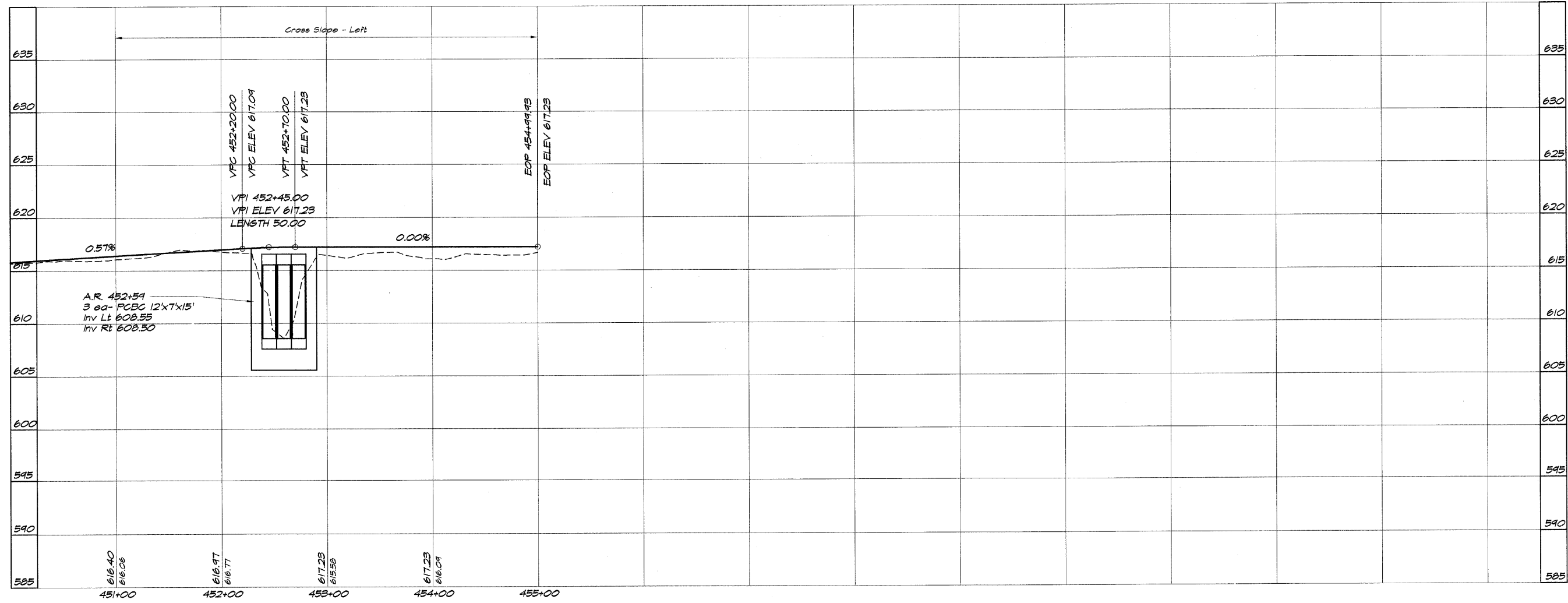
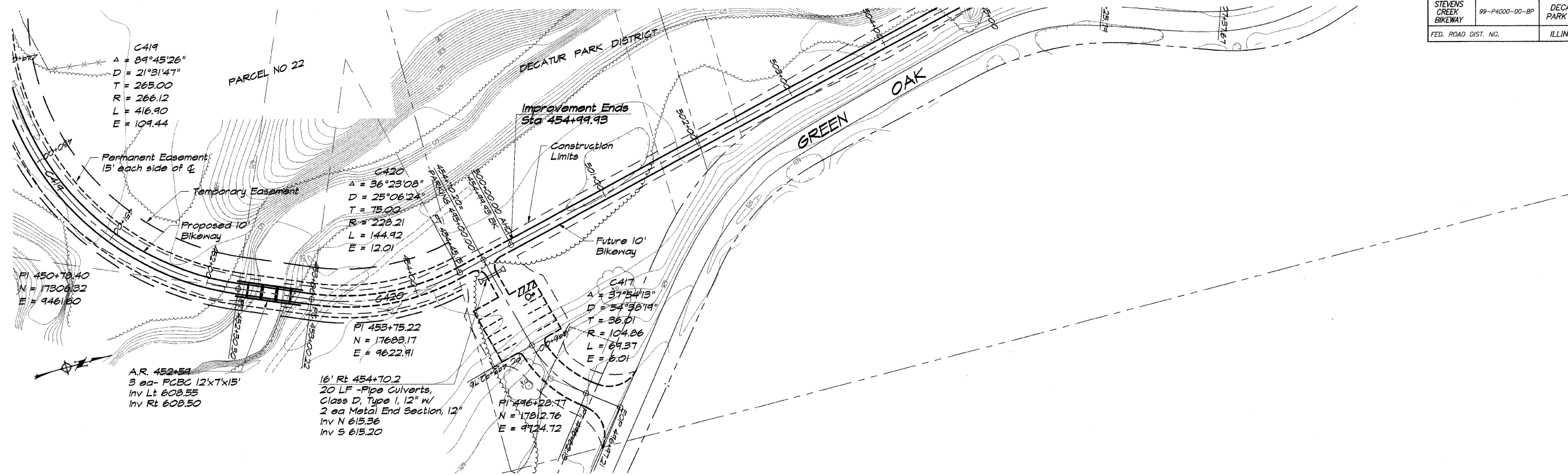


ROUTE NO.	SECTION	CITY	TOTAL SHEETS	SHEET NO.
STEVENS CREEK BIKEWAY	99-P4000-00-BP	DECATUR PARK DIST	145	27
FED. ROAD DIST. NO.		ILLINOIS	PROJECT TE-0007(27)	



BATHURIDGE & ASSOCIATES, INC.
 Consulting Engineers
 1870 SOUTH TAYLORVILLE ROAD
 DECATUR, ILLINOIS 62526
 Phone: (618) 298-1100

DESIGNED	SCALE	REVISIONS
DLX	1" = 50'	NO. BY DATE
P	FIELD BOOK	
XXX	JOB NO.	
	94098	
	DATE	
	May 2002	

DECATUR PARK DISTRICT
STEVENS CREEK BIKEWAY - PHASE I
PLAN AND PROFILE
 STATION 451+00.00 TO 454+99.93