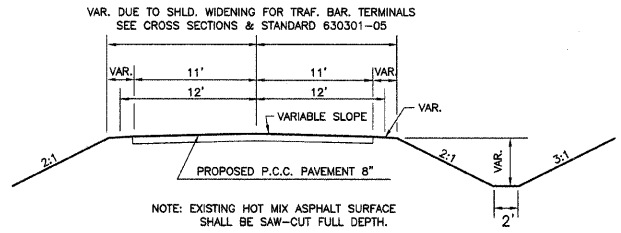
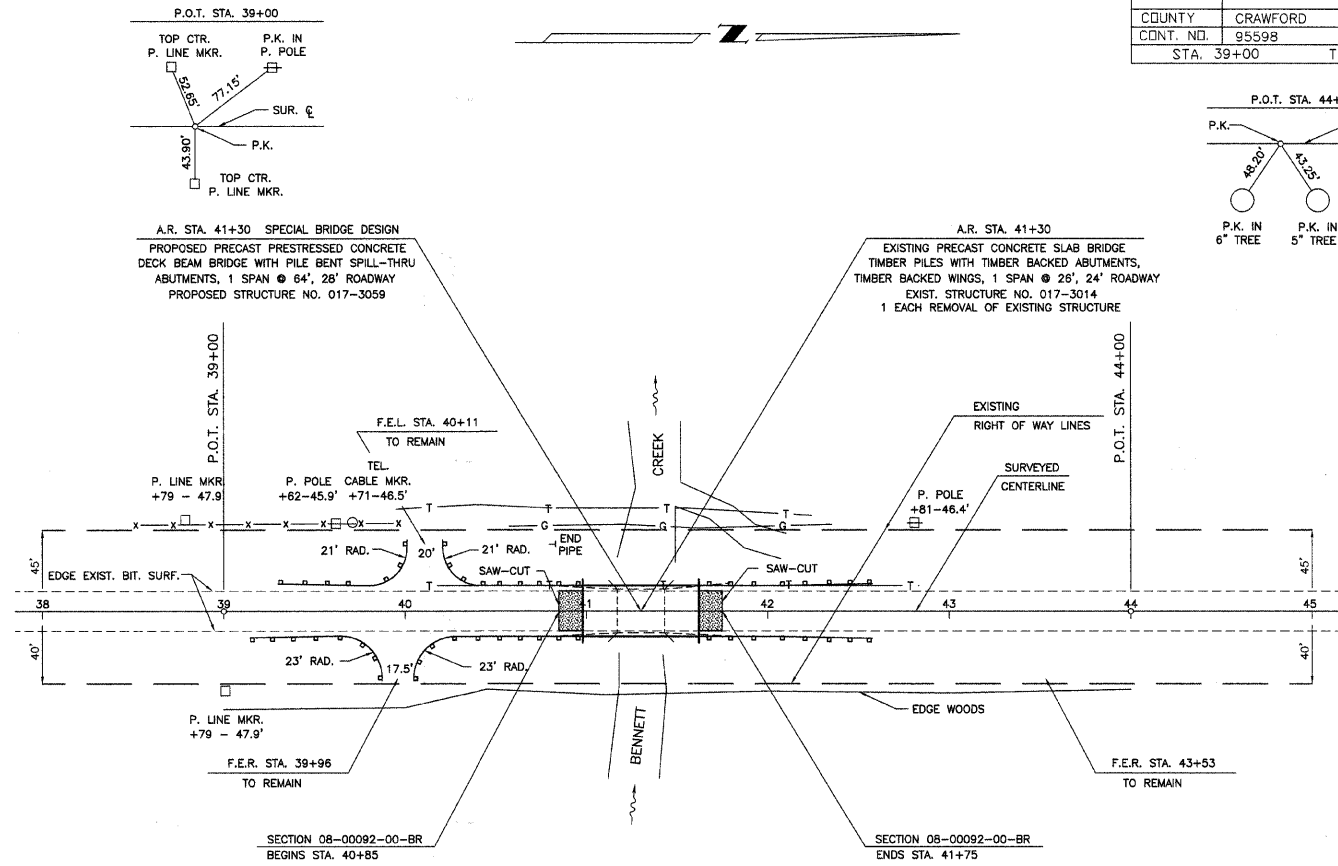


TYPICAL CROSS SECTION OF EXISTING ROADWAY



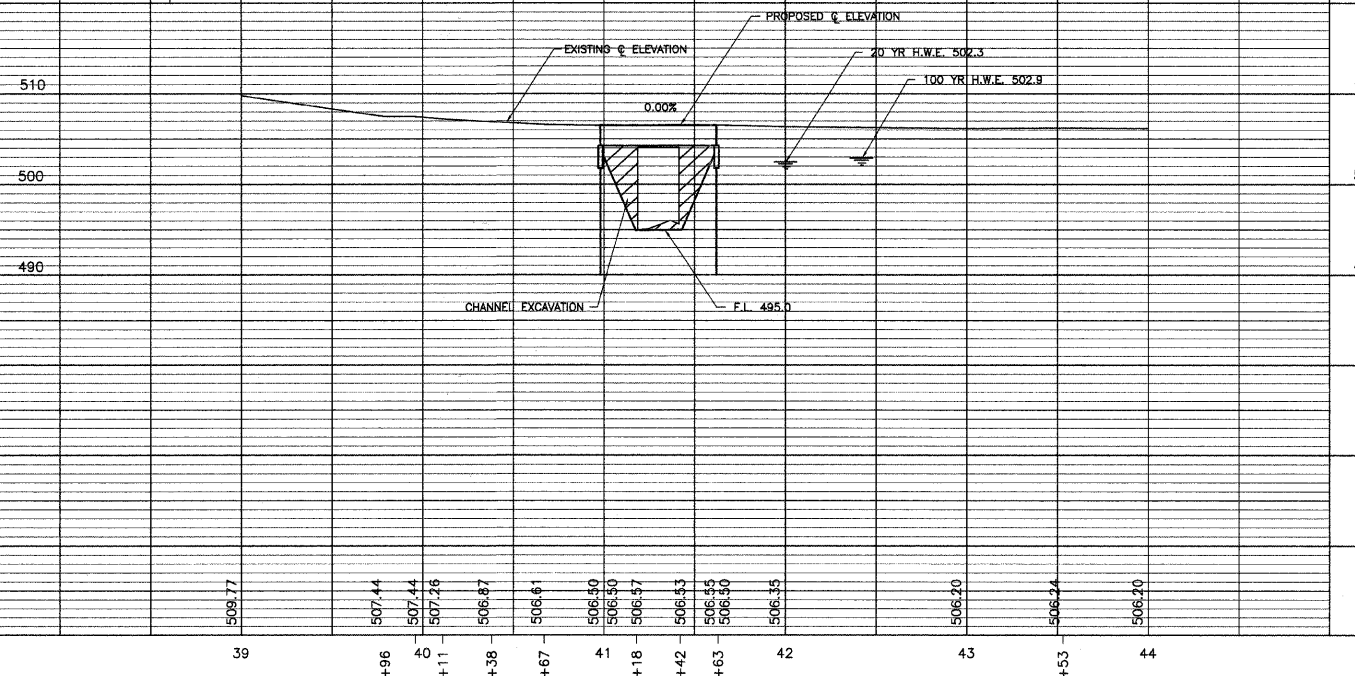
TYPICAL CROSS SECTION OF PROPOSED P.C.C. PAVEMENT 8"



B.M. #1 ELEVATION 500.67  
P.K. IN P. POLE 46' LT.  
STA. 39+62

B.M. #2 ELEVATION 500.47  
P.K. IN P. POLE 46' LT.  
STA. 42+81

<p><b>STEEL PLATE BEAM GUARDRAIL TY B</b></p> <p>RT. 39+63 23' RAD. = 37.5 FOOT LT. 39+79 21' RAD. = 37.5 FOOT RT. 40+05 23' RAD. TO 40+54 = 62.5 FOOT LT. 40+21 21' RAD. TO 40+54 = 50.0 FOOT TOTAL = 187.5 FOOT</p> <p>PROVIDE END SECTION (STD. 630001) AT EACH END OF RADIUS = 4 EACH (COST TO BE INCLUDED IN SPBOR, TY B)</p>	<p><b>TRAF. BARR. TERM. TY 1, SPEC. (TANGENT)</b></p> <p>RT. 39+13 TO 39+63 = 1 EACH LT. 39+29 TO 39+79 = 1 EACH RT. 42+06 TO 42+56 = 1 EACH LT. 42+06 TO 42+56 = 1 EACH TOTAL = 4 EACH</p>	<p><b>TRAF. BARR. TERM. TY 6A</b></p> <p>RT. 40+54 TO 40+98 = 1 EACH LT. 40+54 TO 40+98 = 1 EACH RT. 41+62 TO 42+06 = 1 EACH LT. 41+62 TO 42+06 = 1 EACH TOTAL = 4 EACH</p>	<p><b>SEEDING TO BE DONE BY OTHERS</b></p>	<p><b>PCC PAVEMENT B"</b></p> <p>STA 40+85 TO STA. 40+87.25 = 30 SQ. YD. STA. 41+75 TO STA. 41+75 = 30 SQ. YD. TOTAL = 60 SQ. YD.</p>	<p><b>POROUS GRANULAR EMBANKMENT</b></p> <p>N. ABUTMENT = 48 TON S. ABUTMENT = 48 TON TOTAL = 96 TON</p>
<p><b>EARTHWORK QUANTITIES</b></p> <p>CHANNEL EXCAVATION = 476 CU YD CHANNEL EXCAVATION ADJ. 25% = 357 CU YD EMBANKMENT(SHLD. WID.) = 468 CU YD FURNISHED EXCAVATION = 111 CU YD</p>	<p><b>TRAF. BARR. TERM. REMOVAL TY 1</b></p> <p>EACH CORNER OF EXISTING BRIDGE = 4 EACH</p>	<p><b>STEEL PLATE BEAM GUARD RAIL REMOVAL TYPE A</b></p> <p>EACH CORNER OF EXISTING BRIDGE = 50 LF</p>			



UTILITIES

TELEPHONE: VERIZON  
225 E. CHESTNUT ST.  
OLNEY, IL 62450  
618-395-9131

GAS: AMEREN  
701 S. 9TH STREET  
MATTOON, IL 61838  
888-789-2477

CONNOR & CONNOR, Inc.  
 CONSULTING ENGINEERS  
 209 North Cross Street  
 ROBINSON, ILLINOIS 62454  
 Phone 618-544-8623  
 Fax 618-544-3812  
 Licensed Surveyors  
 Licensed Engineers

DATE: 4/09/2009  
 SCALE: 1" = 50'  
 DRAWN BY: DJC  
 PROJECT: P-1548  
 SHEET: DF