

STATE OF ILLINOIS
 DEPARTMENT OF TRANSPORTATION
 DIVISION OF HIGHWAYS
 PLANS FOR PROPOSED
 FEDERAL-AID HIGHWAY BRIDGE PROGRAM
 T.R.622
 WAYNE COUNTY
 SECTION 08-15143-00-BR
 STRUCTURE NO. 096-3451
 PROJECT NO. BROS-0191(060)
 JOB NO. C-97-014-10

INDEX OF SHEETS

1	COVER SHEET
2	PLAN & PROFILE
3-4	CROSS SECTIONS
5-14	BRIDGE PLANS

STANDARDS: 280001-05 - EROSION CONTROL
 515001-03 - NAME PLATE
 701901-01 - TRAFFIC
 BLR 21-8 - TRAFFIC
 BLR 22-6 - TRAFFIC

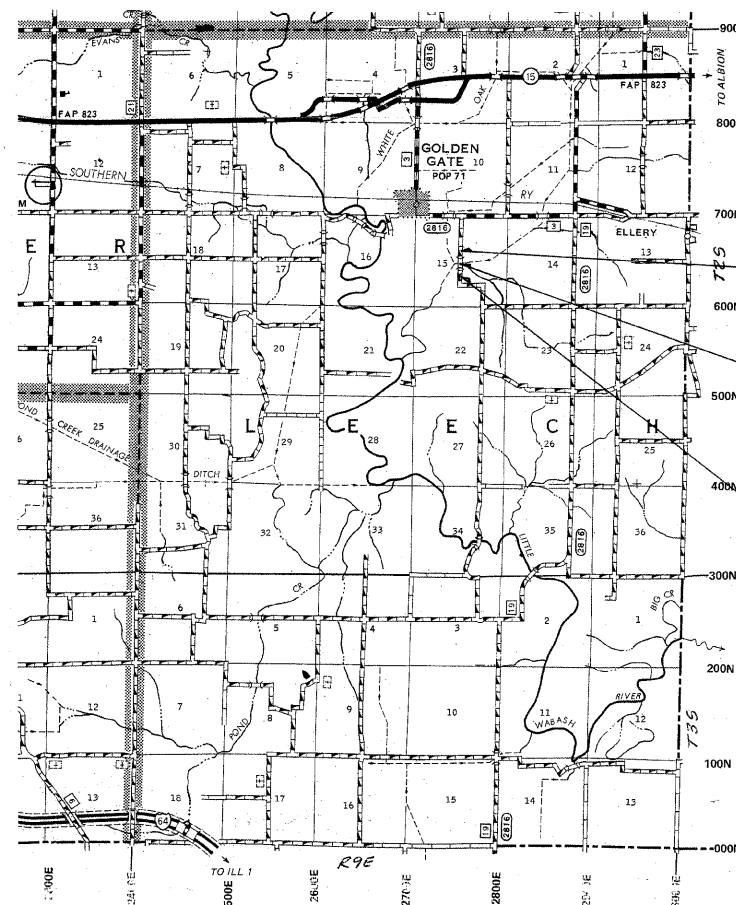
SUMMARY OF QUANTITIES

QUANTITY	UNIT	ITEMS	CODE NO.
596	CU YD	EARTH EXCAVATION	20200100
390	CU YD	CHANNEL EXCAVATION	20300100
0.6	ACRE	SEEDING, CLASS 2 (SPECIAL)	25001000
48	FOOT	TEMPORARY DITCH CHECKS	28000305
60	FOOT	PERIMETER EROSION BARRIER	28000400
140	TON	STONE DUMPED RIPRAP, CLASS A4	28100807
48	TON	STONE RIPRAP DITCH	28102600
501	TON	AGGREGATE BASE COURSE, TYPE B	35101400
1	EACH	REMOVAL OF EXISTING STRUCTURES	50100100
42	CU YD	CONCRETE STRUCTURES	50300225
14.6	CU YD	CONCRETE ENCASEMENT	50300280
1,800	SQ FT	PRECAST PRESTRESSED CONCRETE DECK BEAMS (17" DEPTH)	50400305
4,390	POUND	REINFORCEMENT BARS	50800105
147	FOOT	STEEL RAILING, TYPE S1	50900205*
910	FOOT	FURNISHING STEEL PILES HP 10x42	51201400
910	FOOT	DRIVING PILES	51202305
2	EACH	TEST PILE STEEL HP 10x42	51203400
1	EACH	NAME PLATES	51500100
30	FOOT	PIPE CULVERTS, CLASS D, TYPE 1 18"	542D0223
1	L SUM	MOBILIZATION	67100100
1	L SUM	TRAFFIC CONTROL AND PROTECTION	70101700

* SPECIALTY ITEMS

SCALES

PLAN 1 INCH = 50 FEET
 PROFILE HORZ. 1 INCH = 50 FEET
 PROFILE VERT. 1 INCH = 10 FEET
 CROSS SECTION 1 INCH = 5 FEET



SECTION 08-15143-00-BR
 ENDS STA. 8+00

STA. 4+89 - SPECIAL BRIDGE DESIGN
 PROPOSED PRECAST PRESTRESSED
 CONCRETE DECK BEAM BRIDGE.
 3 SPANS @25' EACH, 24' RDWY., SKEW = 0'
 PROP. STR. NO. 096-3451
 EXIST. STR. NO. 096-3220

SECTION 08-15143-00-BR
 BEGINS STA. 2+00

FUNCTIONAL CLASS: RURAL LOCAL ROAD
 ADT = 75
 DESIGN SPEED = 30MPH

LOCATION MAP

APPROXIMATE SCALE: 1 INCH = 1 MILE
 NET LENGTH = 600 L.F. = 0.114 MILES

TOLL FREE JOINT UTILITY LOCATING
 INFORMATION FOR EXCAVATORS (J.U.L.I.E.)
 TELEPHONE NO. 1-800-892-0123 OR 811

CONTRACT NO. 95607

PROFESSIONAL DESIGN FIRM #184-000832

John A. Stone
 ILLINOIS REGISTERED PROFESSIONAL ENGINEER # 55012
 LICENSE EXPIRES NOVEMBER 30, 2009

ILLINOIS DEPARTMENT OF TRANSPORTATION	
APPROVED:	<i>Arthur D. Reich</i> 10-7-2009 WAYNE COUNTY ENGINEER
PASSED:	<i>Maureen D. Kost</i> 10/22/2009 DISTRICT SEVEN ENGINEER OF LOCAL ROADS & STREETS
RELEASING FOR BID BASED ON LIMITED REVIEW	<i>Paul R. Anshel</i> 10/22/2009 DEPUTY DIRECTOR OF HIGHWAYS, REGION FOUR ENGINEER